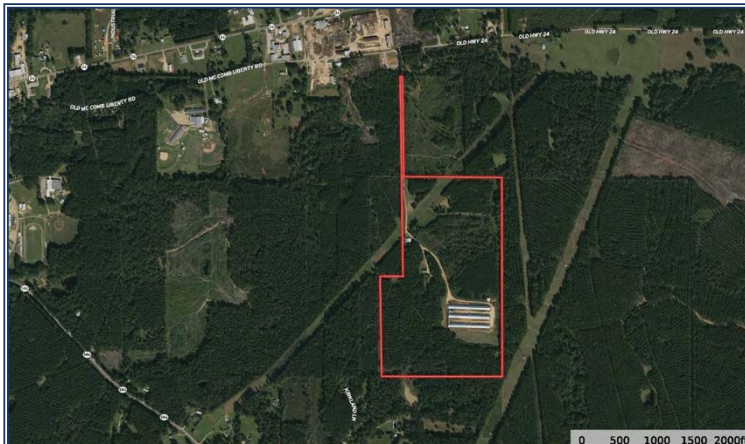




This is an extremely nice newer 3 house breeder/egg farm that was built in 2015. The farm is located in Liberty, MS on 93.3 acres and comes with a 2600 sq ft 3 Bedroom/2.5 bath home. This farm has a long-term contract with one on the nation's largest poultry company and has averaged above \$400,000 gross income a year. The poultry breeder houses are 42' x 540' were built in 2015. All three houses are in great shape and connected by a nice air-conditioned hallway to an extra-large egg room. The hallway has concrete floors with built in drains that makes it very easy to keep clean. The inside of the egg houses are in good condition and have Big Dutchmen feeders, Lubin drinkers, and plastic slats. The nest and pads are like new and have nest closures. The farm has Rotem Controllers, digital backups, LED lights, Acme fans, Cool Cells, generator, and 2 wells. The exterior of farm looks like new and the curtains are in great shape. The residence has a nice kitchen that features commercial stove and Sub-Zero refrigerator. The den has vaulted ceilings with nice fireplace. There is a large metal shop with rollup doors to work on farm equipment. Plus, there is a large barn to store hay and tractor equipment from the weather. The land is a mixture of mature timber and pastureland is loaded with deer and turkeys. There are several areas that are perfect for hunting. The farm will be easy to get financing and provide you with a good income. Appointments must be made at least 48 hours in advance.

4652 Old McComb Liberty Road, Liberty, MS

31.161141, -90.781782 GPS



- 3 House Poultry Breeder Farm
- 3 House 42' x 540'
- High Income
- 3 Bedroom/2.5 Bath 2600 SF
- Pastureland
- Oversized Egg Room
- Air-Conditioned Work Area
- Plastic Slats



\$2,500,000

93.5 Acres
MLS #137068
UC #23042-37068



Jeff Daughdrill
Poultry Specialist
jeffdaughdrill@bellsouth.net
Office: (601) 250-0017
Cell: (601) 810-5511