

Custom Built Home on 46.25+/- Acres Amite County, MS



\$549,000

3171 Nub Road, Gloster, MS 39638

This secluded property in Amite County, MS features a custom-built five-bedroom, three-bath home. As you enter the home from the front porch, you will notice a large living room to your left with plenty of room for the whole family to relax. To the right of the front door, you will see a hall leading you to the main suite with a bathroom with a jacuzzi tub, a separate stand-up shower, and a spacious master closet with built-in storage drawers. There are two additional bedrooms downstairs. Separating those two bedrooms is a bonus den with a very secluded feel. Near this den, there is a bathroom that perfectly accommodates the bedrooms. Upstairs are two oversized bedrooms and a bath with a separate tub and stand-up shower. Behind the large living room, there is the dining/ kitchen area. Check out the large laundry room with upper and lower storage cabinets, a countertop for folding and a stainless steel utility sink, and a massive walk-in pantry. There are many features, like central air and heat, a wood-burning stove in the living room, and a central vacuum system. Bring your rocking chairs to put on the front or back porch, which offers that southern living peace and tranquility that is so desired. Bring your pets to play in the fenced backyard and your hunting gear to hunt deer, wild turkeys, squirrels, or rabbits on the heavily wooded 46.25+/- acre property. The acreage consists of a mixture of pines and hardwood. There is an old road system throughout the property and Days Creek traverses the property. The large four-car garage is spacious enough to store your toys. Call Eli to schedule a viewing!

Directions from the intersection of Busy Corner Road and Hwy 33 in Gloster, MS: Turn right onto Busy Corner Road. Travel 2.7 miles and turn left onto New Hope Road. Travel 5.4 miles and turn right onto Nub Road. The home will be on your left in 1 mile. Address: 3174 Nub Road, Gloster, MS 39638



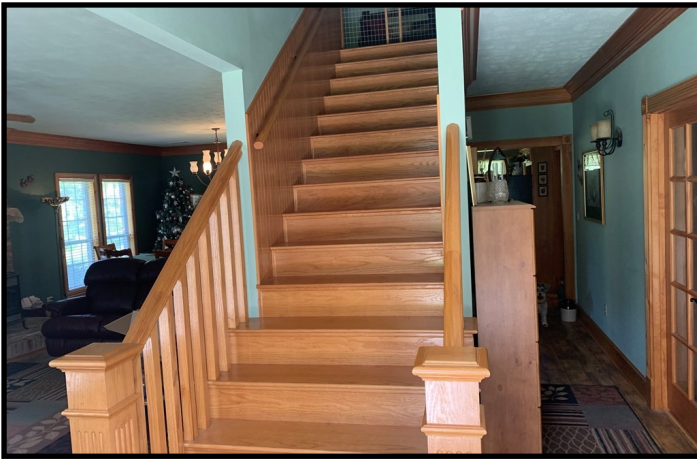
Call me today!

ELI FERGUSON, REALTOR®
Eli@TomSmithLand.com
601.990.5070 **office** | 601.757.7117 **cell**



TomSmithLandandHomes.com

Information is believed to be accurate but not guaranteed.



LandReport
2011-2022
AMERICA'S
BEST
BROKERAGES

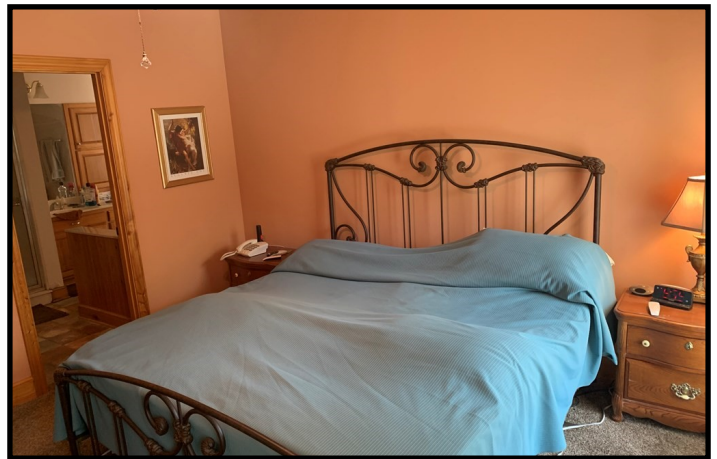
Call me today!

ELI FERGUSON, REALTOR®
Eli@TomSmithLand.com
601.990.5070 **office** | 601.757.7117 **cell**



TomSmithLandandHomes.com

Information is believed to be accurate but not guaranteed.



Call me today!

ELI FERGUSON, REALTOR®
 Eli@TomSmithLand.com
 601.990.5070 **office** | 601.757.7117 **cell**



TomSmithLandandHomes.com

Information is believed to be accurate but not guaranteed.



LandReport
2011-2022
AMERICA'S
BEST
BROKERAGES

Call me today!

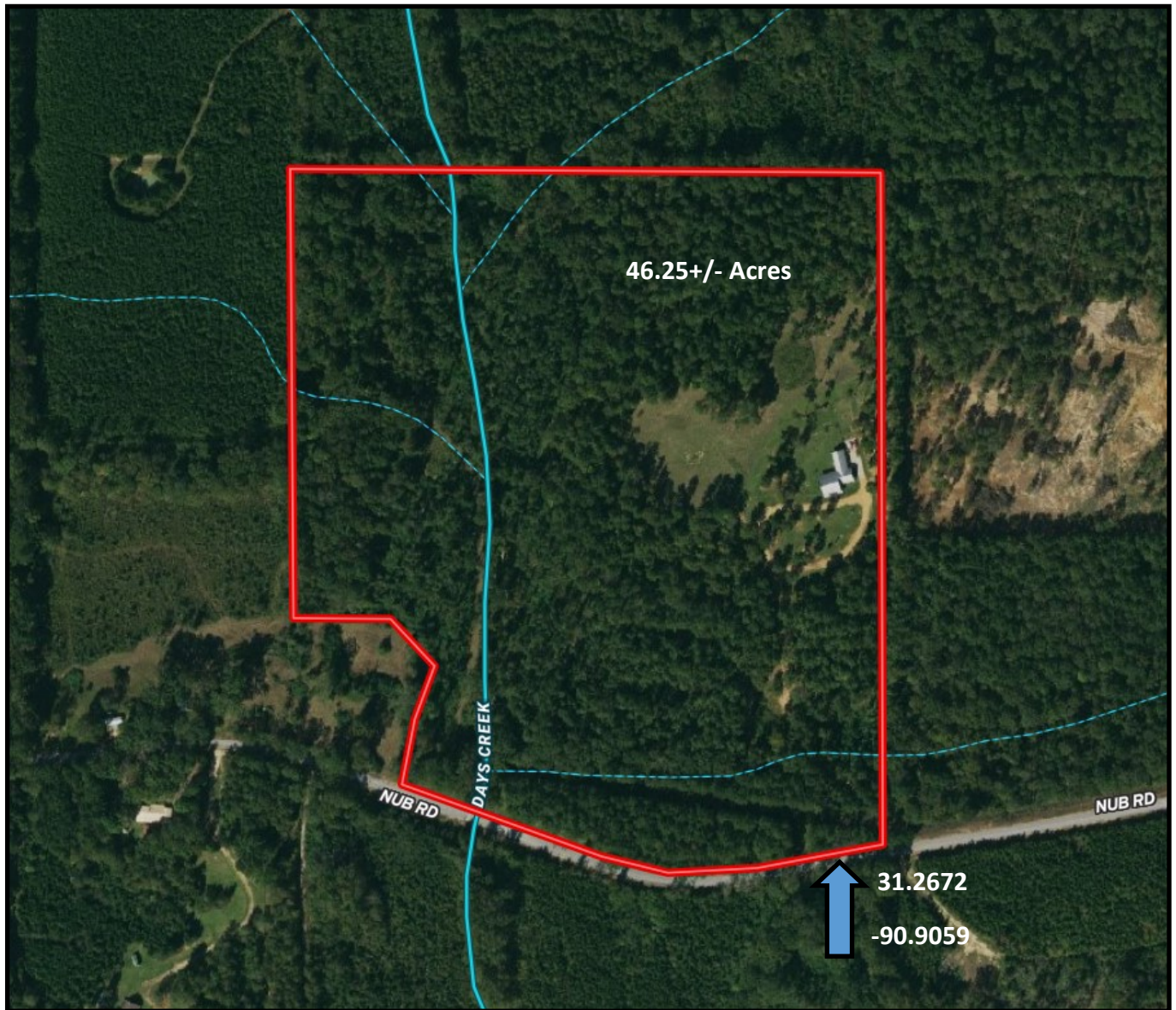
ELI FERGUSON, REALTOR®
Eli@TomSmithLand.com
601.990.5070 **office** | 601.757.7117 **cell**



TomSmithLandandHomes.com

Information is believed to be accurate but not guaranteed.

Aerial Map



[Click for Interactive Map](#)



Call me today!

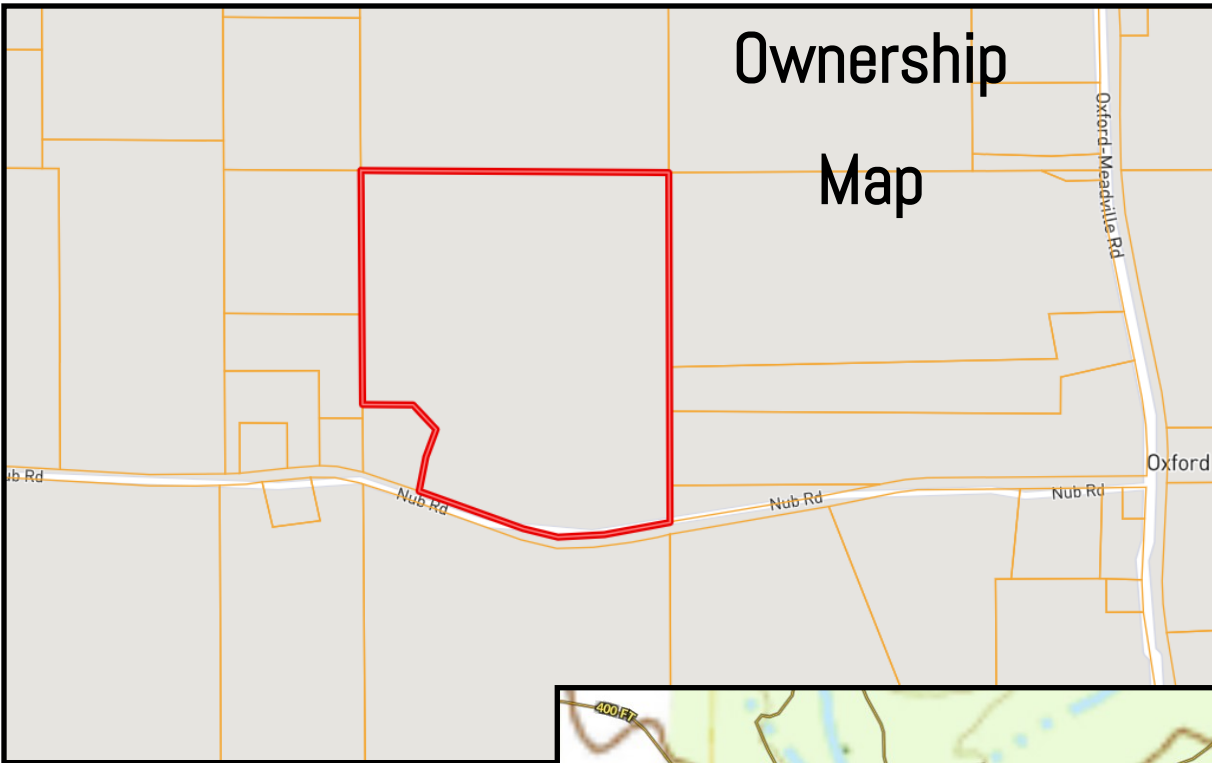
ELI FERGUSON, REALTOR®
Eli@TomSmithLand.com
601.990.5070 **office** | 601.757.7117 **cell**



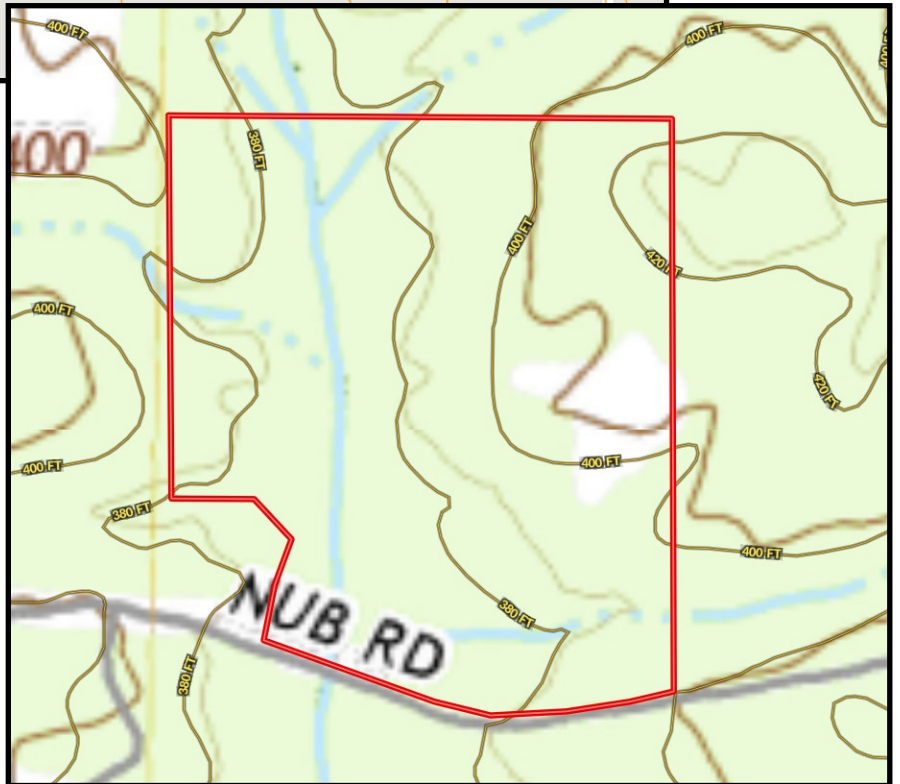
TomSmithLandandHomes.com

Information is believed to be accurate but not guaranteed.

Ownership Map



Topo Map



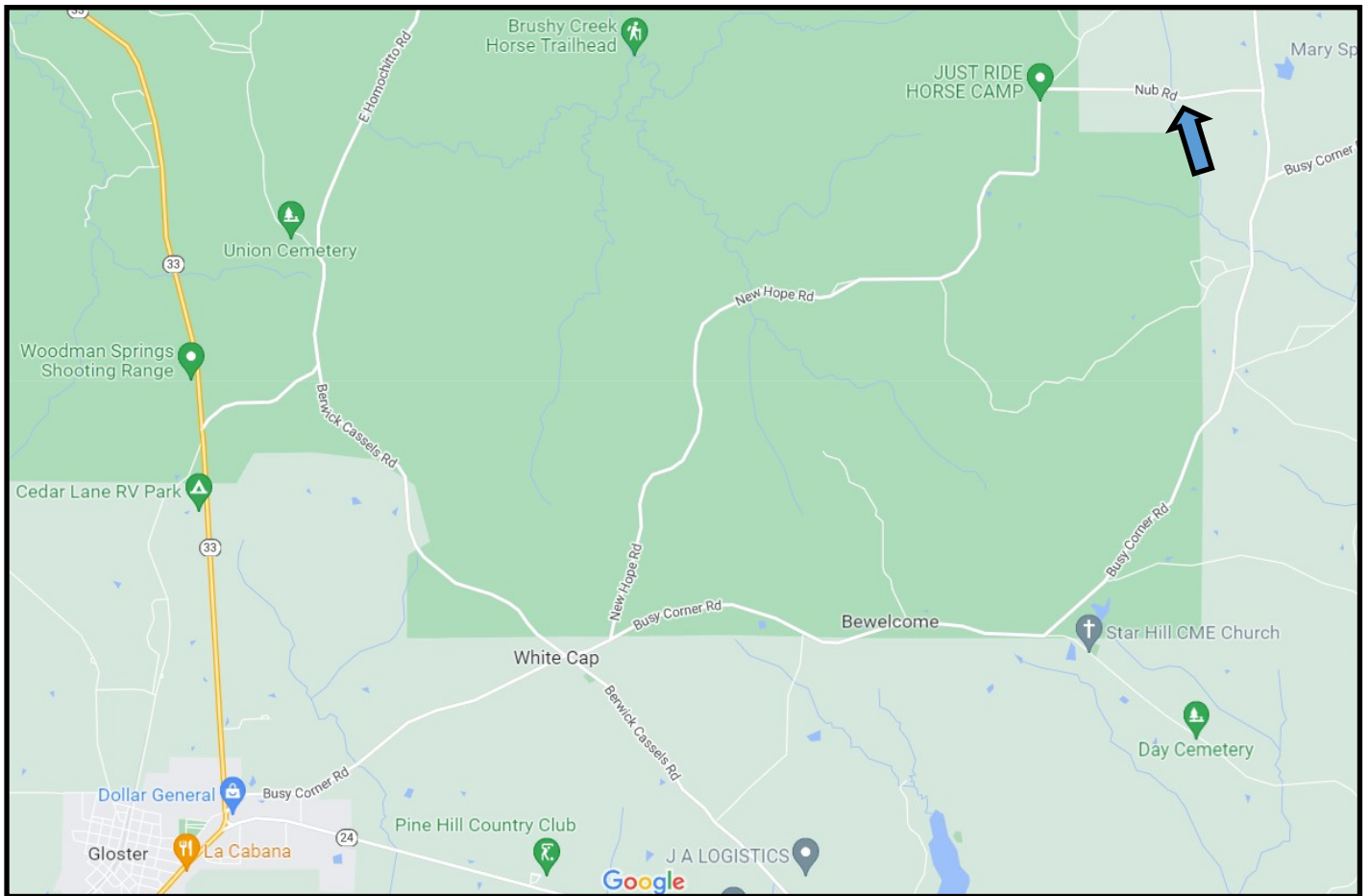
Call me today!

ELI FERGUSON, REALTOR®
Eli@TomSmithLand.com
601.990.5070 **office** | 601.757.7117 **cell**



TomSmithLandandHomes.com

Information is believed to be accurate but not guaranteed.



Directional Map



Directions from the intersection of Busy Corner Road and Hwy 33 in Gloster, MS: Turn right onto Busy Corner Road. Travel 2.7 miles and turn left onto New Hope Road. Travel 5.4 miles and turn right onto Nub Road. The home will be on your left in 1 mile. Address: 3174 Nub Road, Gloster, MS 39638

[Click for Google Link](#)



Call me today!

ELI FERGUSON, REALTOR®
 Eli@TomSmithLand.com
 601.990.5070 **office** | 601.757.7117 **cell**



TomSmithLandandHomes.com

Information is believed to be accurate but not guaranteed.