

515 Frederick Drive Cleveland, MS 38732



Welcome to your new Bolivar County, MS home, only 500 yards from the Cleveland Country Club. This 4,362 square foot home features six bedrooms, four bathrooms, a two-car carport, and a perfect little shed with a roll-down door for your golf cart. The house has custom-carved cypress boards, and the living room features a built-in fireplace that will provide heat for the entire room. A mother-in-law suite with a private bathroom is located under the carport, and the spacious owner's suite has a balcony overlooking the pool room. The house is situated on a 1.95+/- acre lot and includes an indoor concrete pool and a built-in hot tub. The house has a great little room outside of the pool that has a wet bar for serving your guests or would be an excellent location for a poker table. If you have been searching for a unique home with plenty of room in a sought-after area, give Anthony a call for your private showing today!

[Google Map Link](#)

Call me today!

ANTHONY STEEN, REALTOR®
Anthony@TomSmithLand.com
662.441.2500 **office** | 662.645.5151 **cell**



TomSmithLandandHomes.com

Information is believed to be accurate but not guaranteed.



Call me today!

ANTHONY STEEN, REALTOR®
Anthony@TomSmithLand.com
662.441.2500 **office** | 662.645.5151 **cell**



TomSmithLandandHomes.com

Information is believed to be accurate but not guaranteed.



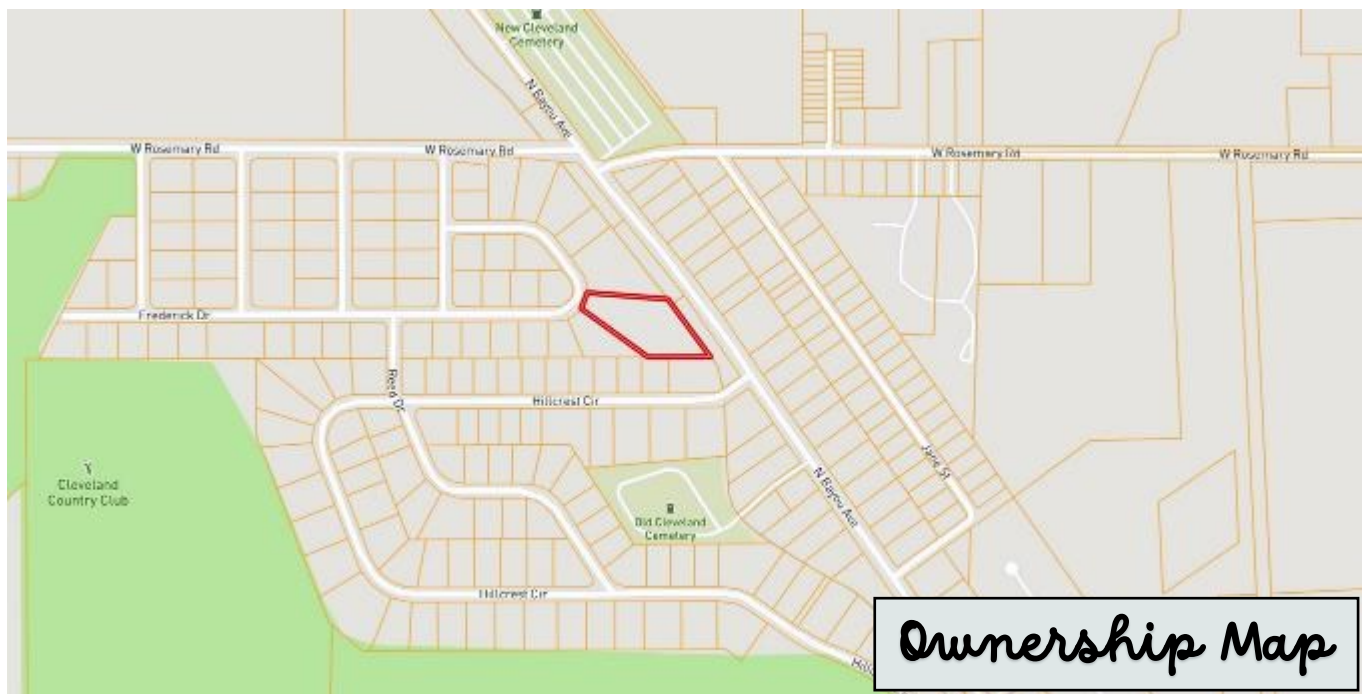
Call me today!

ANTHONY STEEN, REALTOR®
 Anthony@TomSmithLand.com
 662.441.2500 **office** | 662.645.5151 **cell**



TomSmithLandandHomes.com

Information is believed to be accurate but not guaranteed.



[Click Here for an Interactive Map](#)

Call me today!

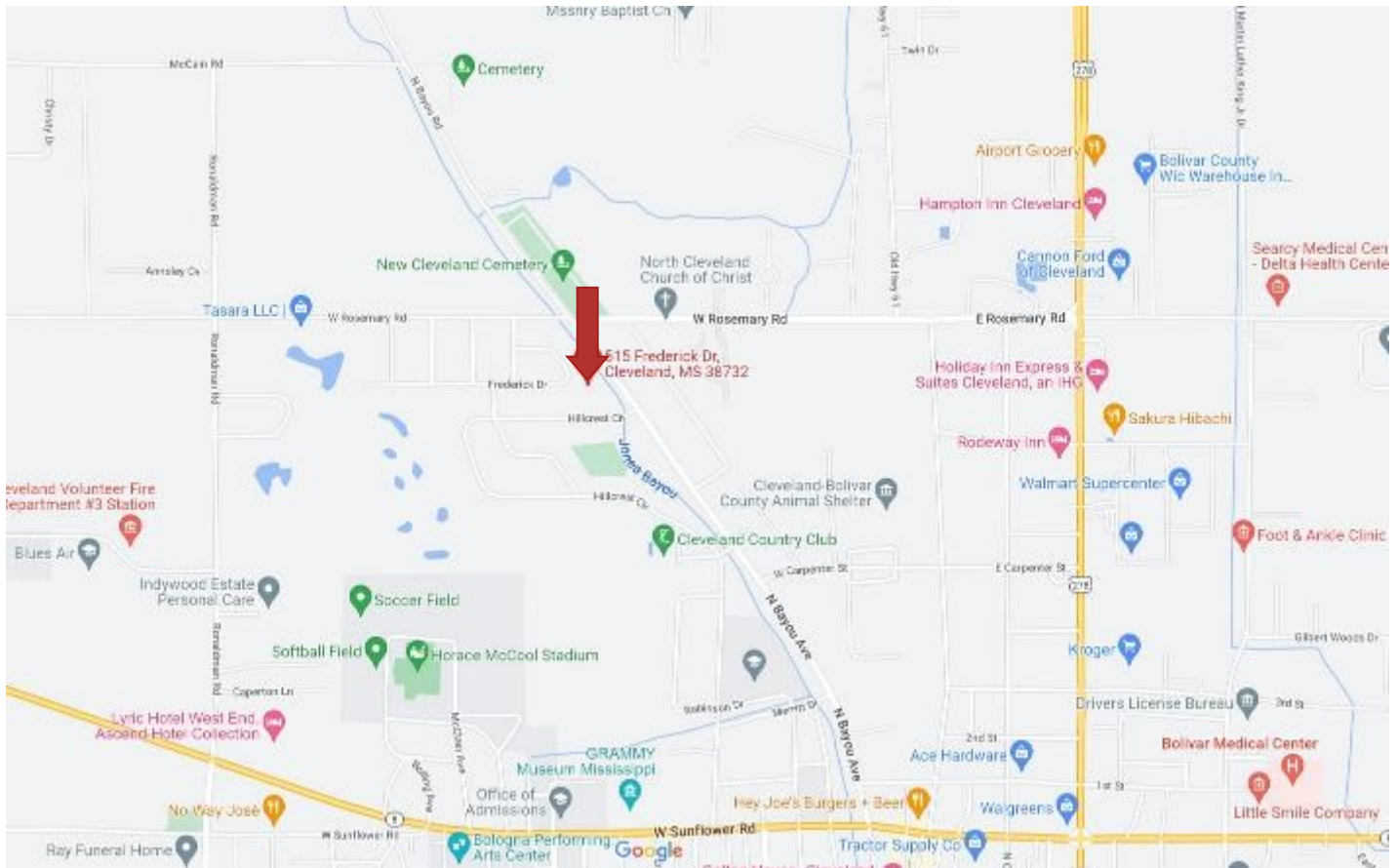
ANTHONY STEEN, REALTOR®
 Anthony@TomSmithLand.com
 662.441.2500 **office** | 662.645.5151 **cell**



TomSmithLandandHomes.com

Information is believed to be accurate but not guaranteed.

Directional Map



Directions from the Intersection of Hwy 8 and Hwy 278 in Cleveland, MS: Travel Hwy 278 North for .5 miles. Turn left onto E Carpenter St. and travel .6 miles. Turn right onto N Bayou Ave. and travel .6 miles. Turn left onto W Rosemary Rd. and then make an immediate left onto Douglas Ave. Turn left onto Fredericks Dr., after .1 mile the home will be on your left.

[Google Map Link](#)



Call me today!

ANTHONY STEEN, REALTOR®
Anthony@TomSmithLand.com
662.441.2500 **office** | 662.645.5151 **cell**



TomSmithLandandHomes.com

Information is believed to be accurate but not guaranteed.