

GRENADA COUNTY, MS RUSTIC COUNTRY HOME ON 10± ACRES

315 Harris Road Grenada, MS 38901



Welcome to your new rustic country home on 10± acres in Grenada County, MS. This cabin-style, three-story house is located just outside the city limits of Grenada. It features three bedrooms, two bathrooms, a man cave living room downstairs, and a basement to store all your hunting clothes and supplies. The laundry room has a clothing chute from the main floor to drop off all your laundry. Fireplaces are located on the main floor and basement, each providing heat for the entire house. The upstairs has an air conditioner wall unit, and the entire house has a built-in Generac generator that will run the whole house if there is a power outage. Outside is a workshop with utilities and a carport. Located behind the shop is an additional 4-car garage with utilities and a bathroom that would make a perfect place to store your side-by-side, tractor or fishing boats. A concrete pad is also on the west side of the shop, providing storage for a pontoon boat or an RV. This home with the acreage would be an ideal camp or an excellent investment to build more cabins for short-term rental fishing camps. Call Anthony for your private showing today!



Call me today!

ANTHONY STEEN, REALTOR®
Anthony@TomSmithLand.com
662.441.2500 **office** | 662.645.5151 **cell**



TomSmithLandandHomes.com

Information is believed to be accurate but not guaranteed.



Call me today!

ANTHONY STEEN, REALTOR®
 Anthony@TomSmithLand.com
 662.441.2500 **office** | 662.645.5151 **cell**



TomSmithLandandHomes.com

Information is believed to be accurate but not guaranteed.



Call me today!

ANTHONY STEEN, REALTOR®
 Anthony@TomSmithLand.com
 662.441.2500 **office** | 662.645.5151 **cell**



TomSmithLandandHomes.com

Information is believed to be accurate but not guaranteed.



Call me today!

ANTHONY STEEN, REALTOR®
 Anthony@TomSmithLand.com
 662.441.2500 **office** | 662.645.5151 **cell**



TomSmithLandandHomes.com

Information is believed to be accurate but not guaranteed.



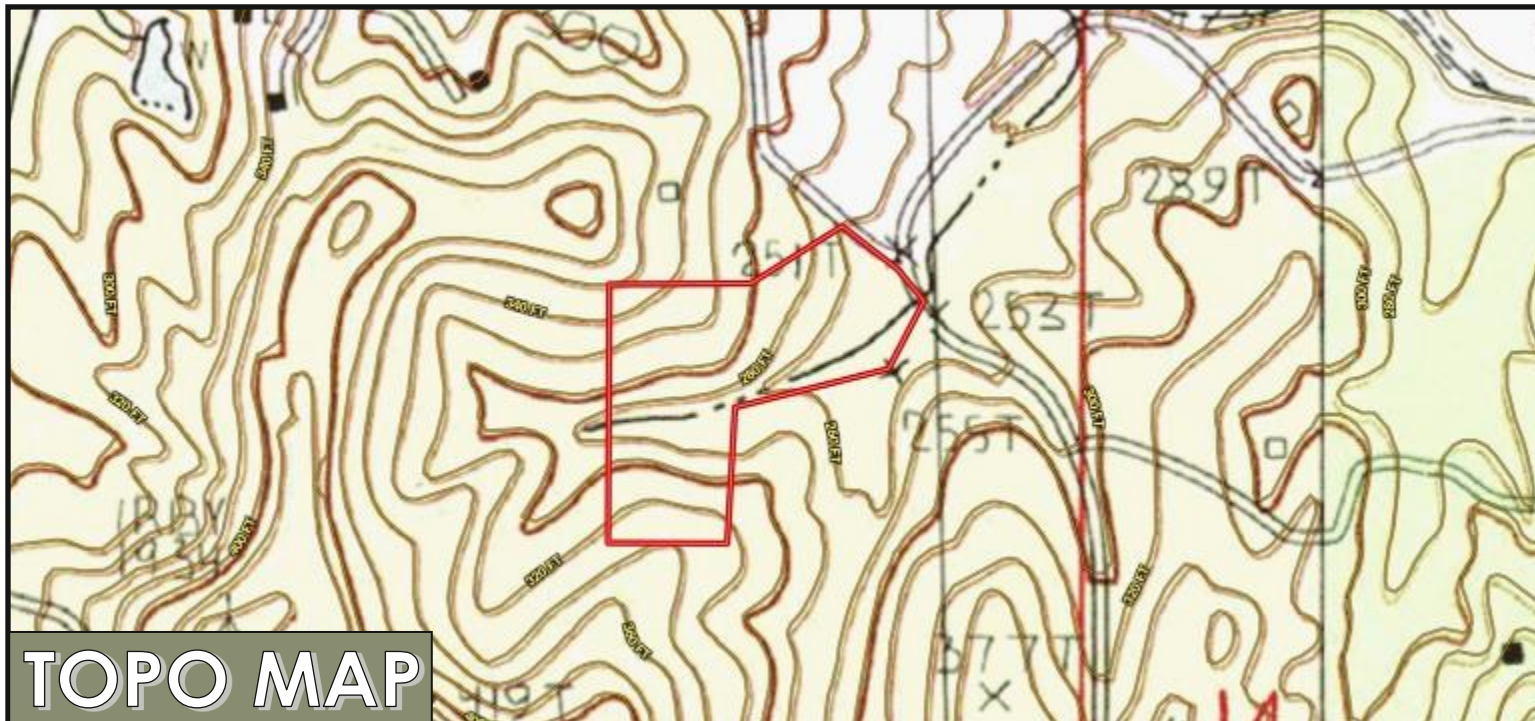
Call me today!

ANTHONY STEEN, REALTOR®
Anthony@TomSmithLand.com
662.441.2500 **office** | 662.645.5151 **cell**



TomSmithLandandHomes.com

Information is believed to be accurate but not guaranteed.



Call me today!

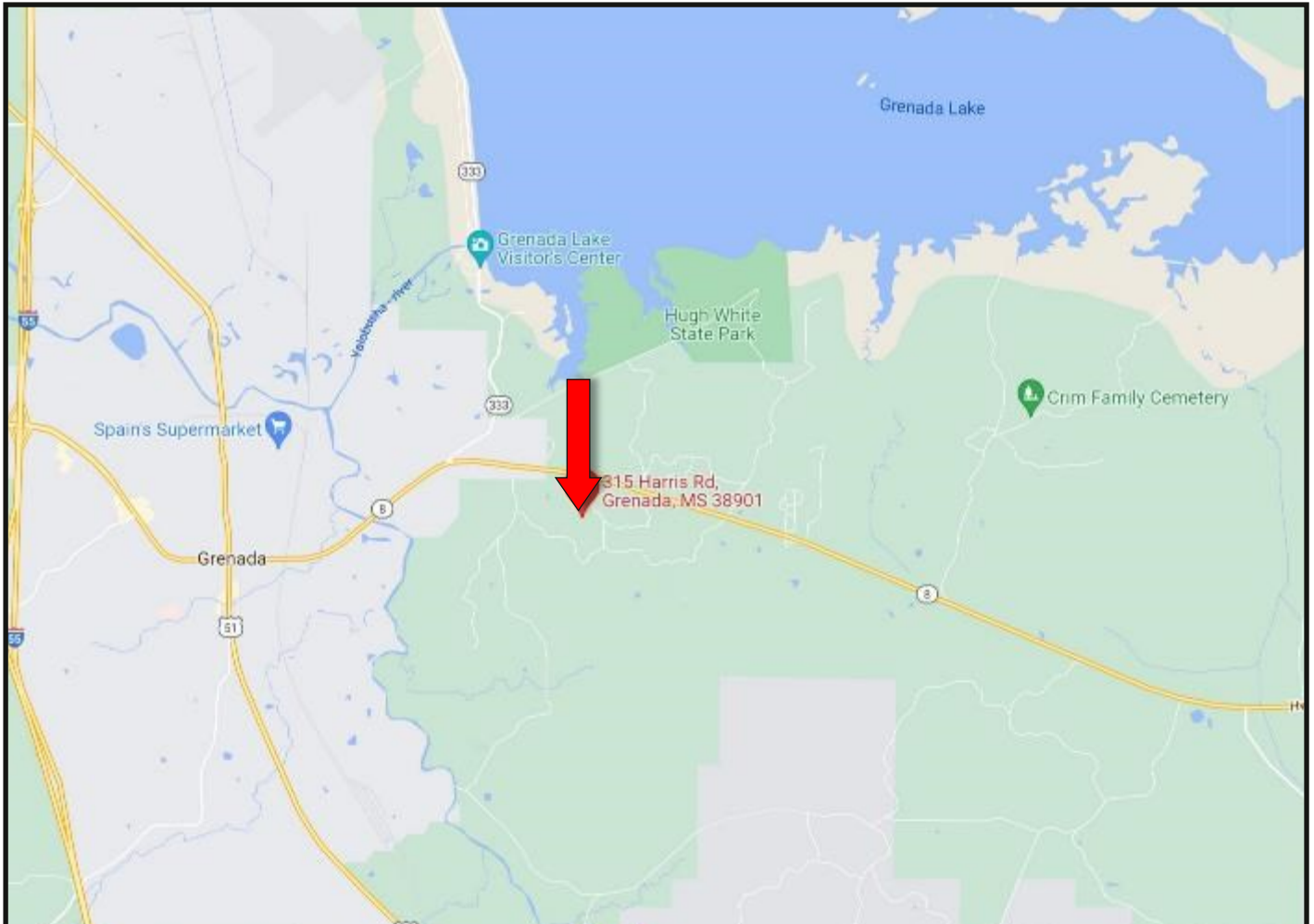
ANTHONY STEEN, REALTOR®
Anthony@TomSmithLand.com
662.441.2500 **office** | 662.645.5151 **cell**



TomSmithLandandHomes.com

Information is believed to be accurate but not guaranteed.

DIRECTIONAL MAP



DIRECTIONS FROM I-55 AND HWY 8 IN GRENADA, MS: Take Exit 206 off I-55 for Hwy 8 towards Hwy 7 S Grenada/Greenwood. Keep right on Hwy 8 and travel 5.7 miles. Turn right onto Harris Road, after .4 miles the house will be on the right.

315 Harris Road Grenada, MS 38901 - Click for Directions



Call me today!

ANTHONY STEEN, REALTOR®
Anthony@TomSmithLand.com
662.441.2500 **office** | 662.645.5151 **cell**



TomSmithLandandHomes.com

Information is believed to be accurate but not guaranteed.