

Country Home and 6+/- Acres Oktibbeha County, MS

\$499,999



Here is a beautiful large home in the country sitting on 6 +/- acres! This three bed/ three bath home in Oktibbeha County, MS with a wrap around porch was just remolded and ready for a new family. There are huge laundry and mud rooms, hard-wood floors, a three-car garage, and a large front yard! It also consists of a large main suite with his and hers closets, separate vanities, fireplace, and a private toilet room. This home can also be purchased with additional 39.8 +/- acres and a barn. This home is located in the Bradley community just outside Sturgis, MS, and is only 10 minutes from Starkville, MS! Call Walker to schedule your private tour!

Directions from Walmart, Starkville MS: From Walmart turn right onto MS-12 W and travel towards Sturgis, MS. Then in 9.4 miles turn right onto Smith Road. After that, in .6 miles turn right and you will have arrived at 612 Smith Road, Sturgis MS.



Call me today!

WALKER TRANUM, REALTOR®
Walker@TomSmithHomes.com
662.268.6333 office | 662.769.1442 cell



TomSmithLandandHomes.com

Information is believed to be accurate but not guaranteed.



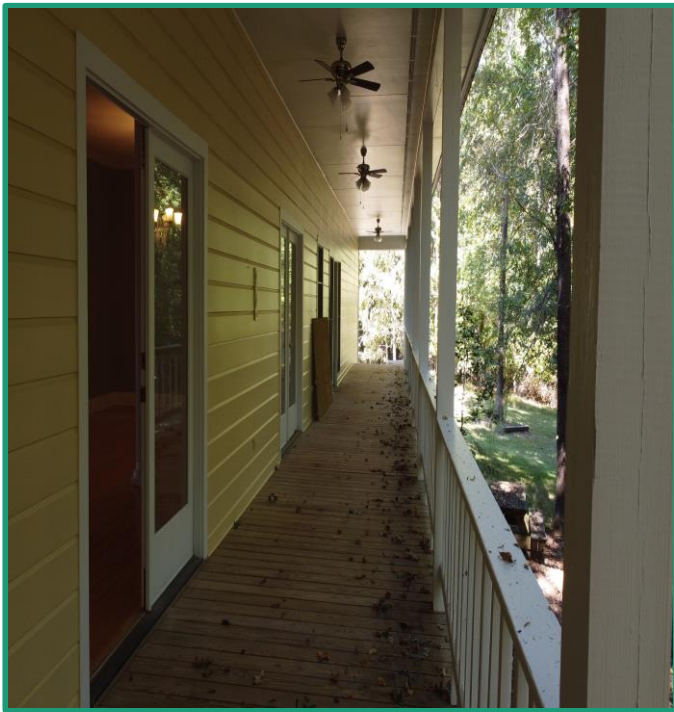
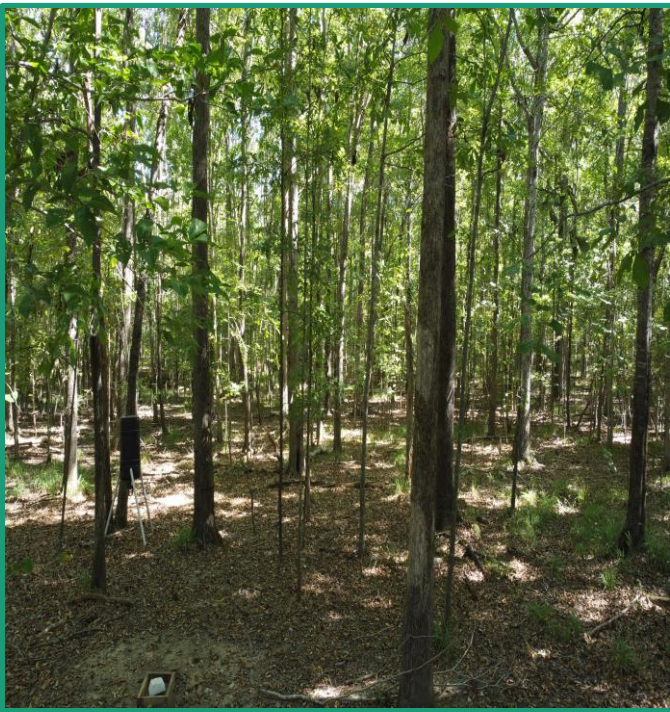
Call me today!

WALKER TRANUM, REALTOR®
Walker@TomSmithHomes.com
662.268.6333 office | 662.769.1442 cell



TomSmithLandandHomes.com

Information is believed to be accurate but not guaranteed.



LandReport
2011-2022
AMERICA'S
BEST
BROKERAGES

Call me today!

WALKER TRANUM, REALTOR®
Walker@TomSmithHomes.com
662.268.6333 office | 662.769.1442 cell



TomSmithLandandHomes.com

Information is believed to be accurate but not guaranteed.



Call me today!

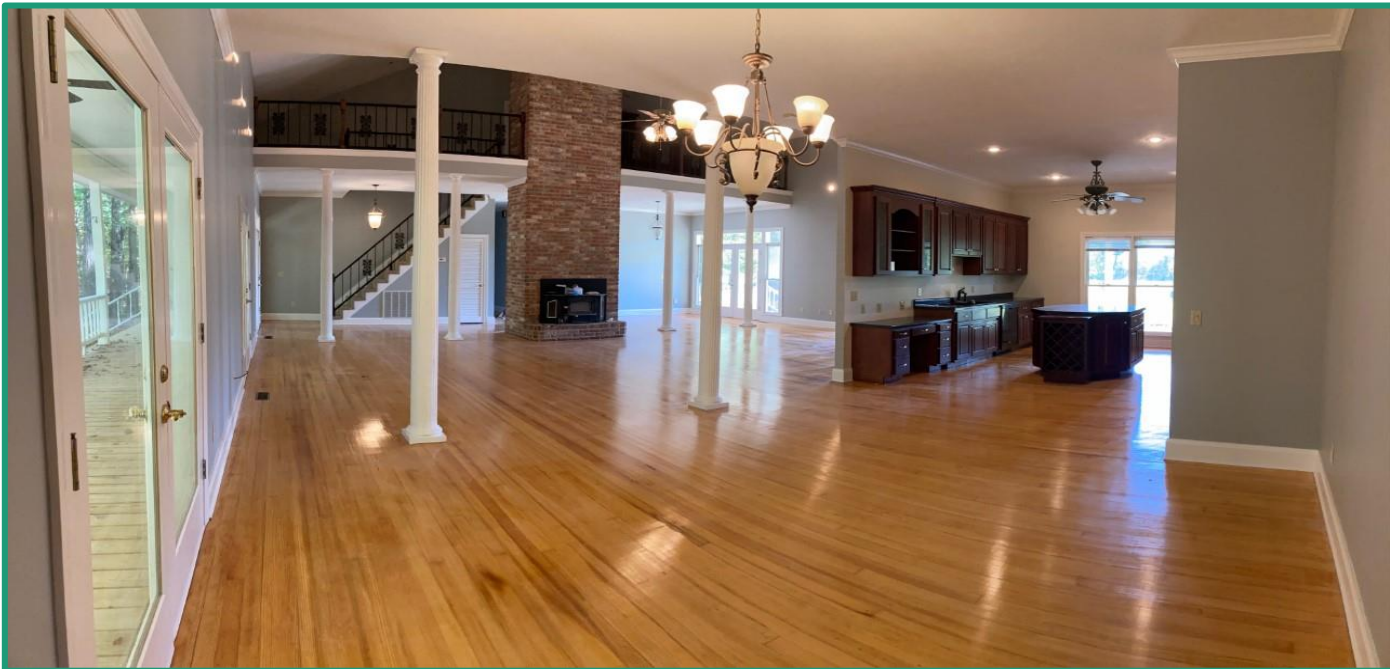
WALKER TRANUM, REALTOR®
Walker@TomSmithHomes.com
662.268.6333 office | 662.769.1442 cell



TomSmithLandandHomes.com

Information is believed to be accurate but not guaranteed.

LandReport
2011-2022
AMERICA'S
BEST
BROKERAGES



Call me today!

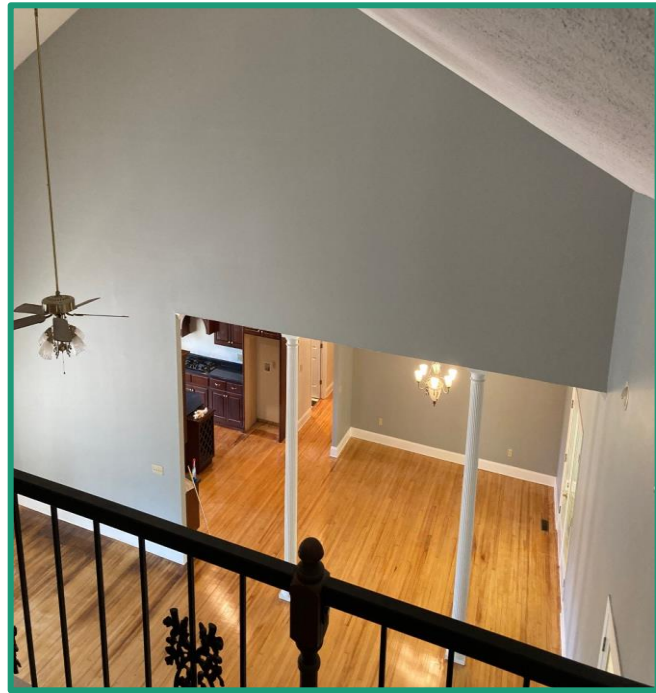
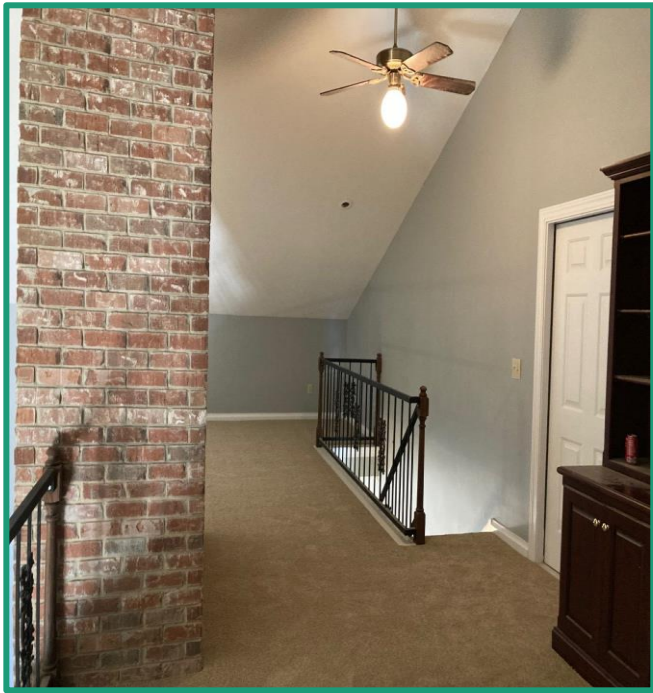
WALKER TRANUM, REALTOR®
Walker@TomSmithHomes.com
662.268.6333 office | 662.769.1442 cell



TomSmithLandandHomes.com

Information is believed to be accurate but not guaranteed.

LandReport
2011-2022
AMERICA'S
BEST
BROKERAGES



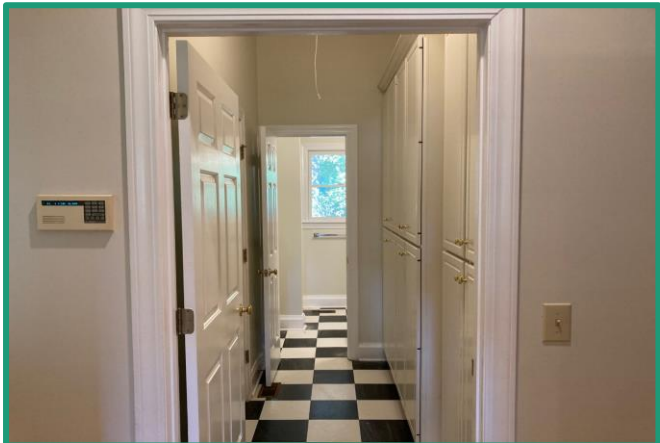
Call me today!

WALKER TRANUM, REALTOR®
Walker@TomSmithHomes.com
662.268.6333 office | 662.769.1442 cell



TomSmithLandandHomes.com

Information is believed to be accurate but not guaranteed.



Call me today!

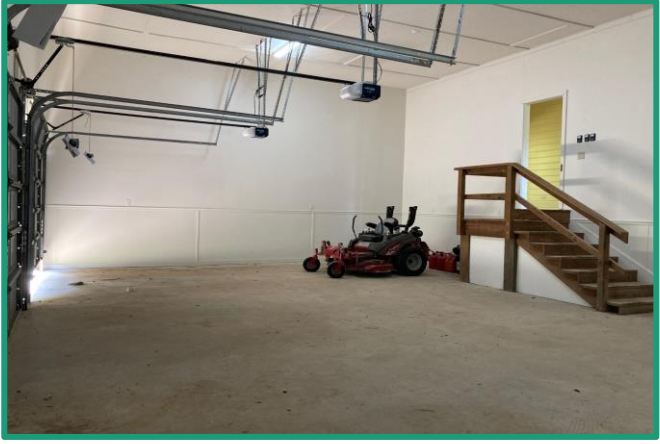
WALKER TRANUM, REALTOR®
Walker@TomSmithHomes.com
662.268.6333 office | 662.769.1442 cell



LandReport
2011-2022
AMERICA'S
BEST
BROKERAGES

TomSmithLandandHomes.com

Information is believed to be accurate but not guaranteed.



Call me today!

WALKER TRANUM, REALTOR®
Walker@TomSmithHomes.com
662.268.6333 office | 662.769.1442 cell



TomSmithLandandHomes.com

Information is believed to be accurate but not guaranteed.

Aerial Map

[Interactive Link](#)



33.3772, -88.996



Call me today!

WALKER TRANUM, REALTOR®
Walker@TomSmithHomes.com
662.268.6333 office | 662.769.1442 cell

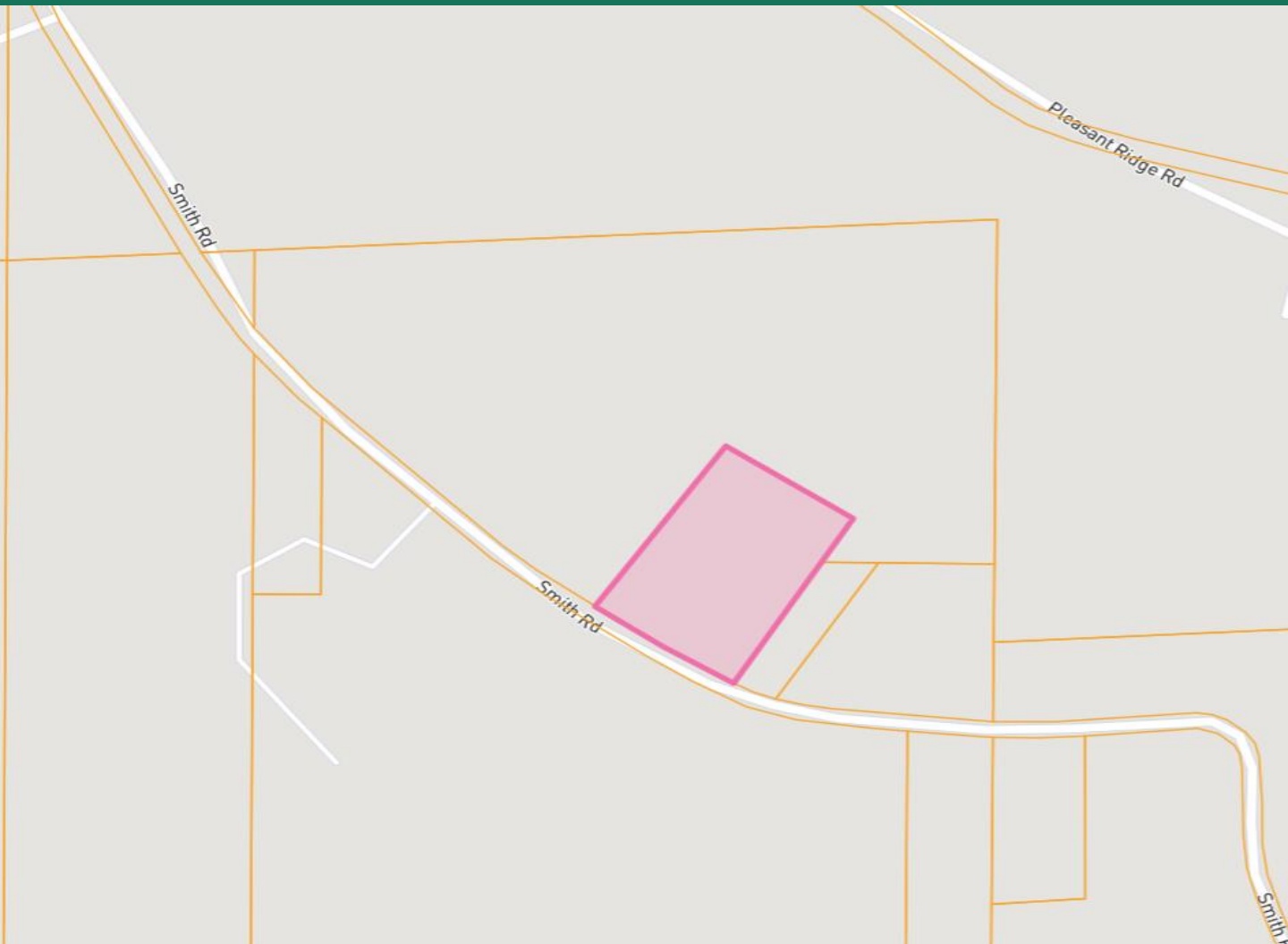


LandReport
2011-2022
AMERICA'S
BEST
BROKERAGES

TomSmithLandandHomes.com

Information is believed to be accurate but not guaranteed.

Ownership Map



LandReport
2011-2022
AMERICA'S
BEST
BROKERAGES

Call me today!

WALKER TRANUM, REALTOR®
Walker@TomSmithHomes.com
662.268.6333 office | 662.769.1442 cell



TomSmithLandandHomes.com

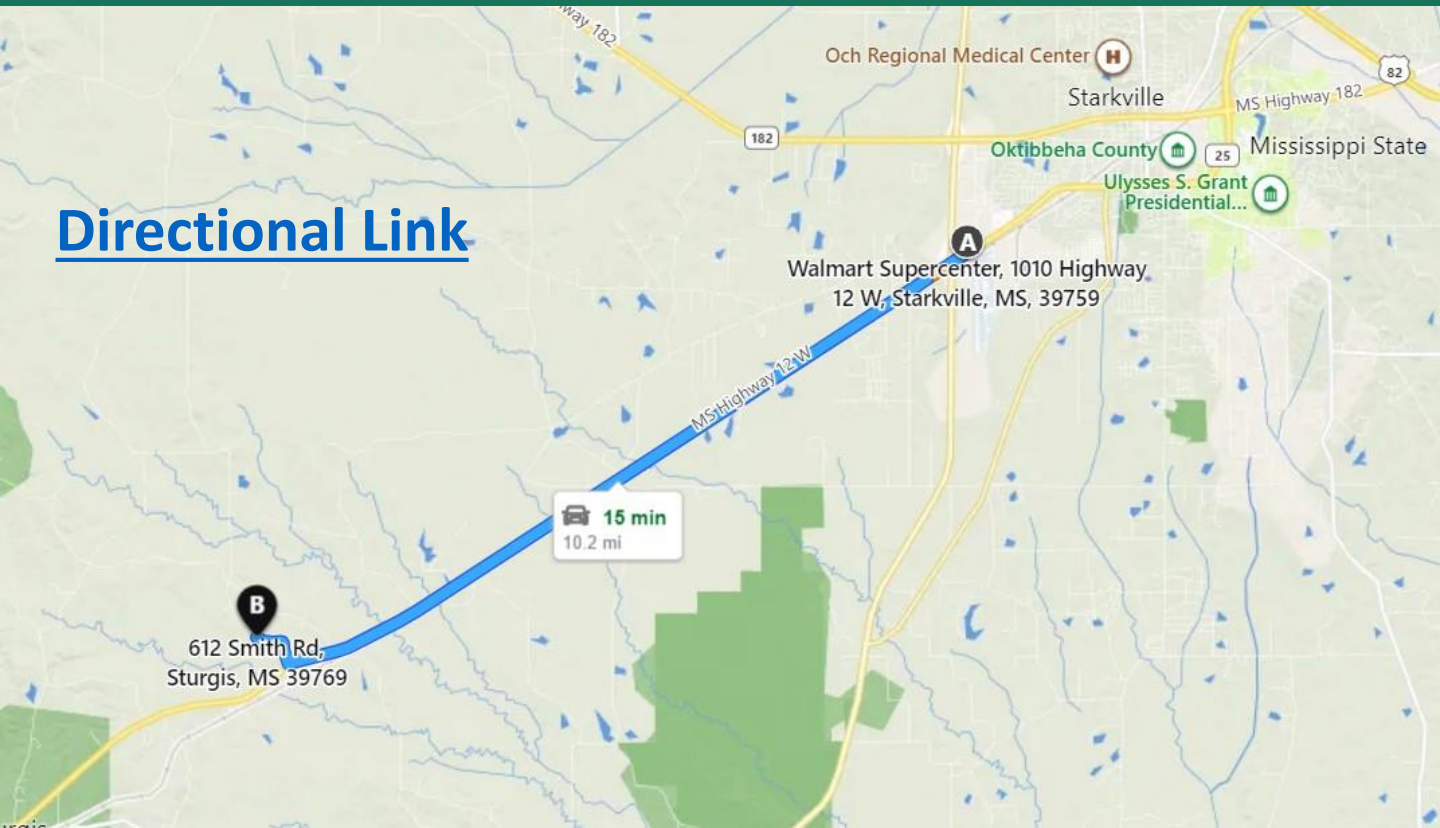
Information is believed to be accurate but not guaranteed.

TomSmithLandandHomes.com

Information is believed to be accurate but not guaranteed.

Directional Map

Directional Link



Directions from Walmart, Starkville MS: From Walmart turn right onto MS-12 W and travel towards Sturgis, MS. Then in 9.4 miles turn right onto Smith Road. After that, in .6 miles turn right and you will have arrived at 612 Smith Road, Sturgis MS.



Call me today!

WALKER TRANUM, REALTOR®
Walker@TomSmithHomes.com
662.268.6333 office | 662.769.1442 cell



TomSmithLandandHomes.com

Information is believed to be accurate but not guaranteed.