

160 +/- Acre Recreational Tract Winston County, MS



\$1,800/Acre



This great hunting property holds a strong population of deer and turkey. It ranges from advanced age, pure pine areas to hardwood creek-bottoms. It has frontage along Highway 14 with great sites to build a camp or home. Utilities are available along the highway frontage. It has gentle, rolling topography and tremendous interior access along woods roads. There are numerous wildlife food plots in place with many sites for additional plots. It is a beautiful tract in the county, yet within 10 minutes from Louisville and 40 minutes from Starkville and MSU.

Directions from the intersection of MS-15 N/MS-25 N & MS-14W/W Main St. in Louisville, MS:

Travel west on MS-14 from Louisville for 12 miles and property is on the right marked with a sign.



Call me today!

MICHAEL HALFACRE, MANAGING BROKER
MHalfacre@TomSmithLand.com
662.268.6333 **office** | 662.242.4220 **cell**



TomSmithLandandHomes.com

Information is believed to be accurate but not guaranteed.



Call me today!

MICHAEL HALFACRE, MANAGING BROKER
MHalfacre@TomSmithLand.com
662.268.6333 office | 662.242.4220 cell



Expect More. Get More.

TomSmithLandandHomes.com

Information is believed to be accurate but not guaranteed.



Call me today!

MICHAEL HALFACRE, MANAGING BROKER
MHalfacre@TomSmithLand.com
662.268.6333 **office** | 662.242.4220 **cell**



TomSmithLandandHomes.com

Information is believed to be accurate but not guaranteed.



Call me today!

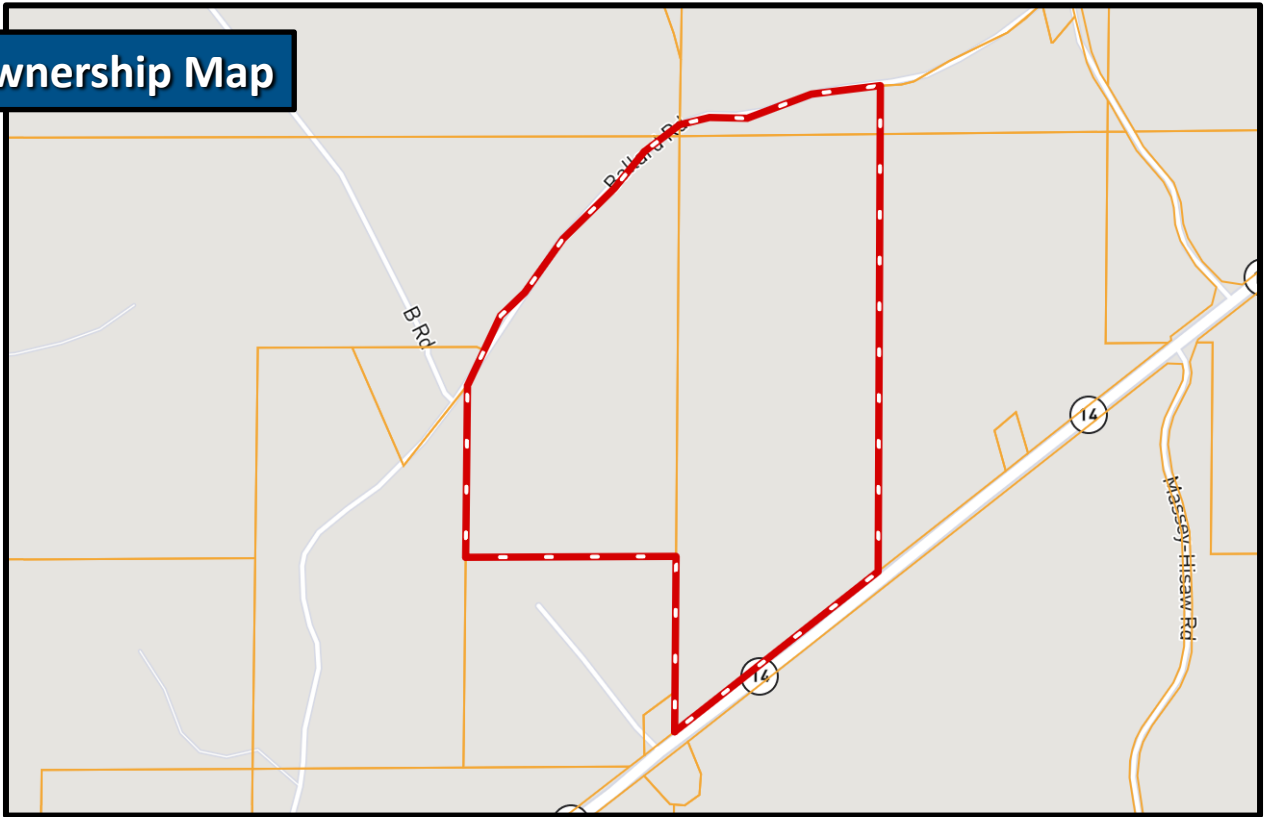
MICHAEL HALFACRE, MANAGING BROKER
MHalfacre@TomSmithLand.com
662.268.6333 **office** | 662.242.4220 **cell**



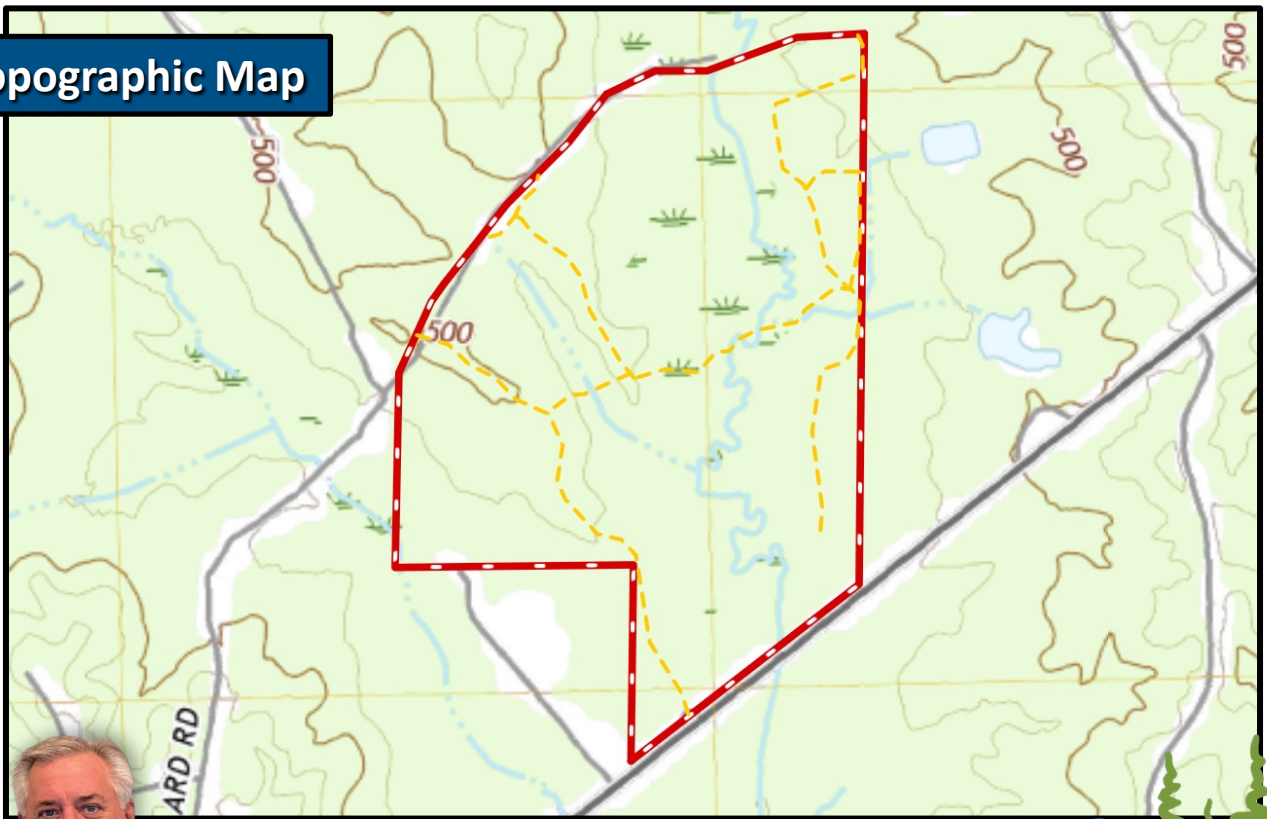
TomSmithLandandHomes.com

Information is believed to be accurate but not guaranteed.

Ownership Map



Topographic Map



Call me today!

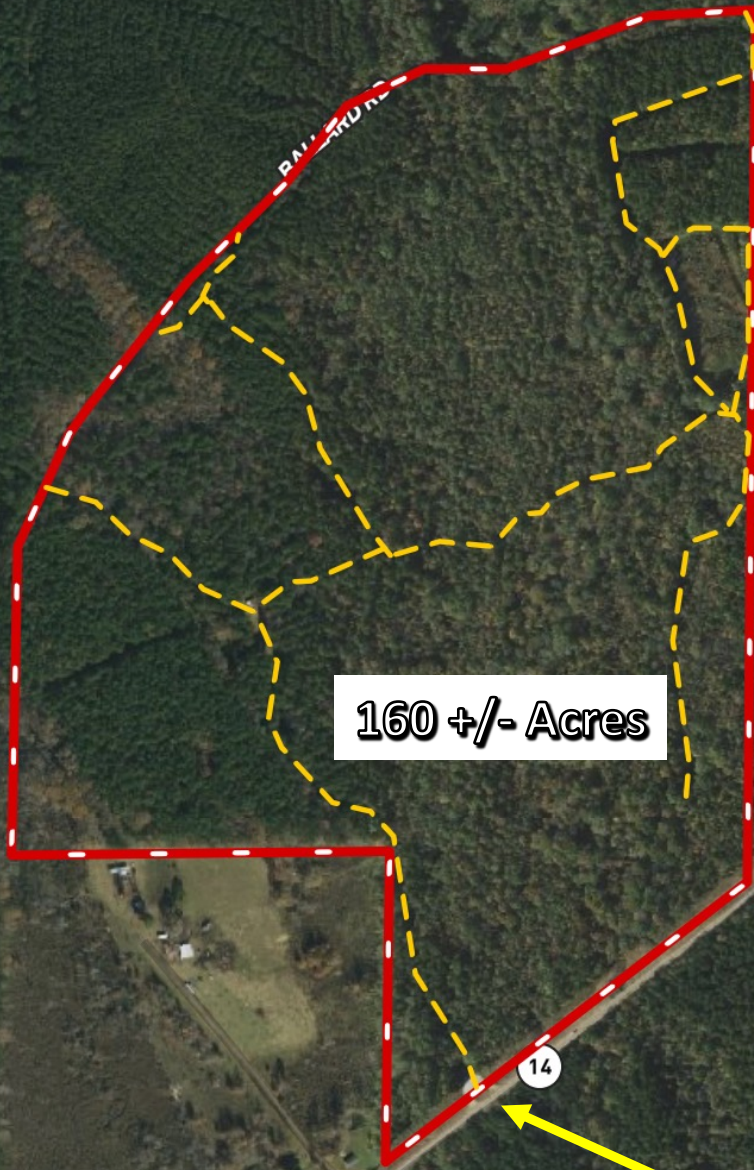
MICHAEL HALFACRE, MANAGING BROKER
MHalfacre@TomSmithLand.com
662.268.6333 **office** | 662.242.4220 **cell**

**Tom
Smith
LAND AND
HOMES**
Expect More. Get More.

TomSmithLandandHomes.com

Information is believed to be accurate but not guaranteed.

Aerial Photograph



[Click for Interactive Map](#)

33.0843, -89.2825



Call me today!

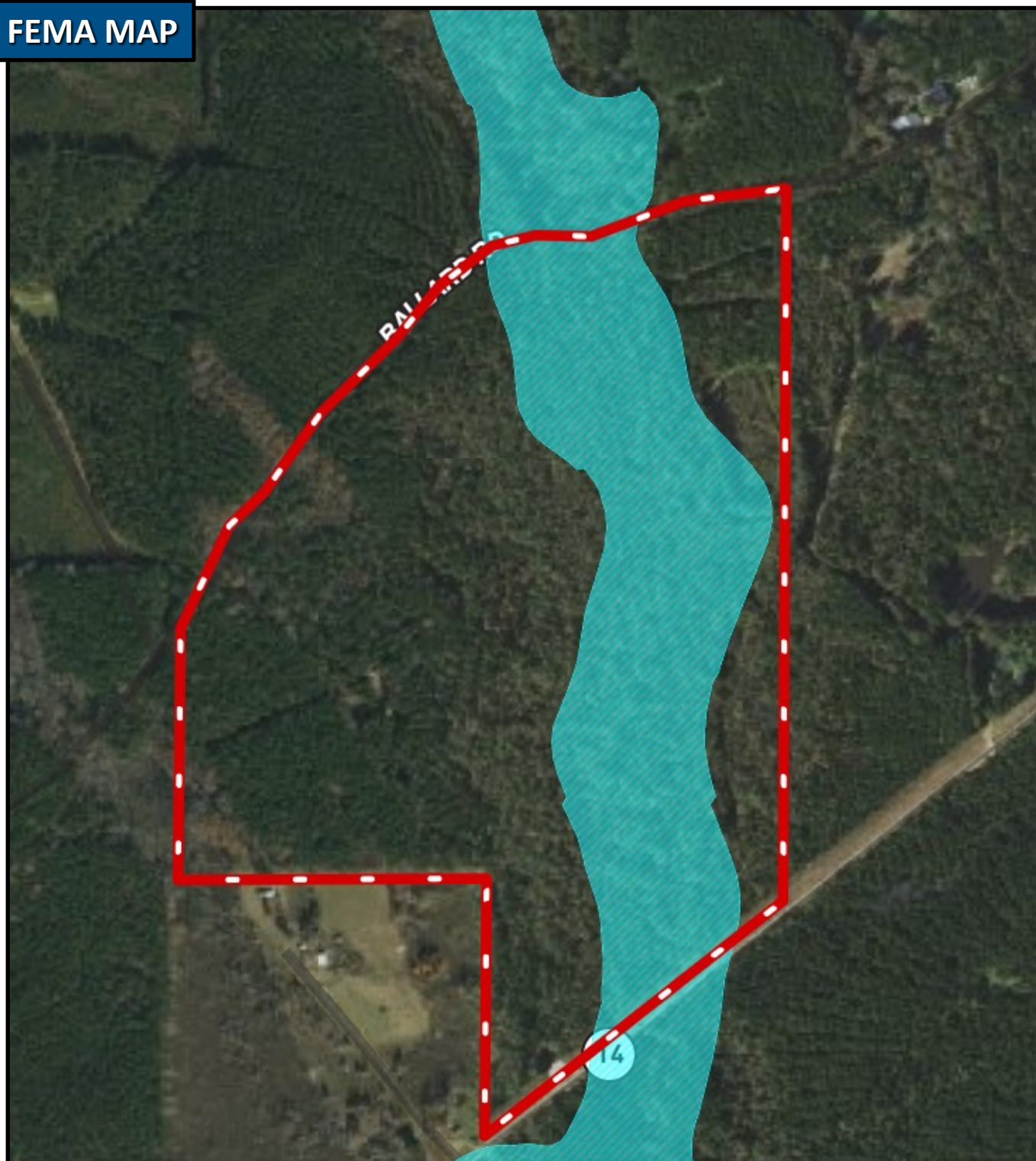
MICHAEL HALFACRE, MANAGING BROKER
MHalfacre@TomSmithLand.com
662.268.6333 **office** | 662.242.4220 **cell**



TomSmithLandandHomes.com

Information is believed to be accurate but not guaranteed.

FEMA MAP



Call me today!

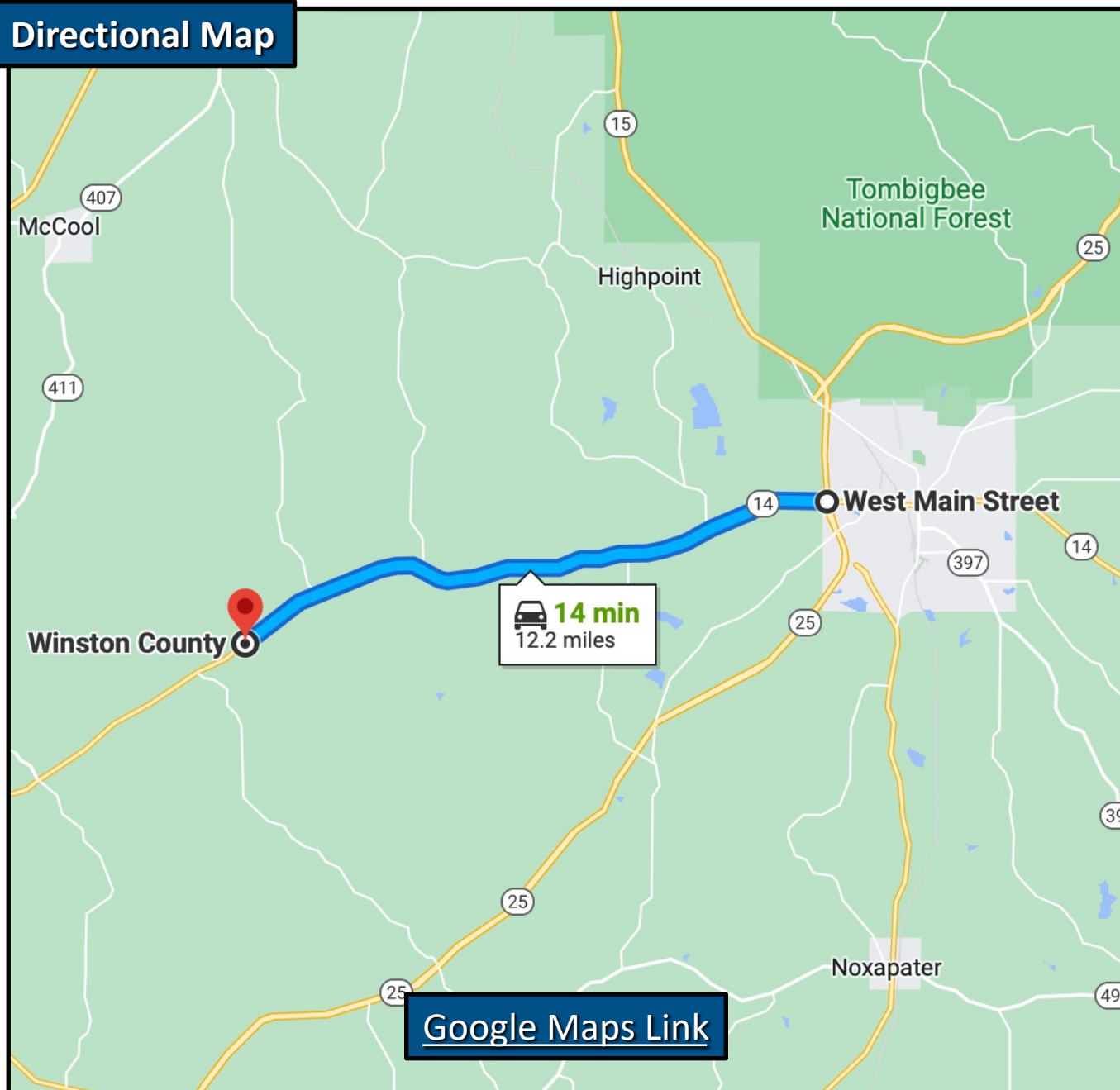
MICHAEL HALFACRE, MANAGING BROKER
MHalfacre@TomSmithLand.com
662.268.6333 **office** | 662.242.4220 **cell**



TomSmithLandandHomes.com

Information is believed to be accurate but not guaranteed.

Directional Map



Directions from the intersection of MS-15 N/MS-25 N & MS-14W/W Main St. in Louisville, MS:

Travel west on MS-14 from Louisville for 12 miles and property is on the right marked with a sign.



Call me today!

MICHAEL HALFACRE, MANAGING BROKER
MHalfacre@TomSmithLand.com
662.268.6333 **office** | 662.242.4220 **cell**



TomSmithLandandHomes.com

Information is believed to be accurate but not guaranteed.