

Brick Home in Boyle

Bolivar County, MS



2182 Hwy 446 Boyle, MS 38730

\$155,000

Take a look at this 2,032 sqft home located on 1+/- acres of land located in Bolivar County, MS. This two story home has four bedrooms and two bathrooms, a brick fireplace in the living room and stainless steel appliances in the kitchen, along with a nice shed located on the back of the property. Call Tracey today! (662)719-4720 or (662)441-2500.

Directions from the corner of HWY 61 and HWY 8 in Cleveland, MS: Travel south on Hwy 61 for approximately 3.0 miles. Turn right onto Hwy 446 and in 4.2 miles the destination is on the right.



Call me today!

TRACEY BELL, MANAGING BROKER
Tracey@TomSmithLand.com
662.441.2500 **office** | 662.719.4720 **cell**



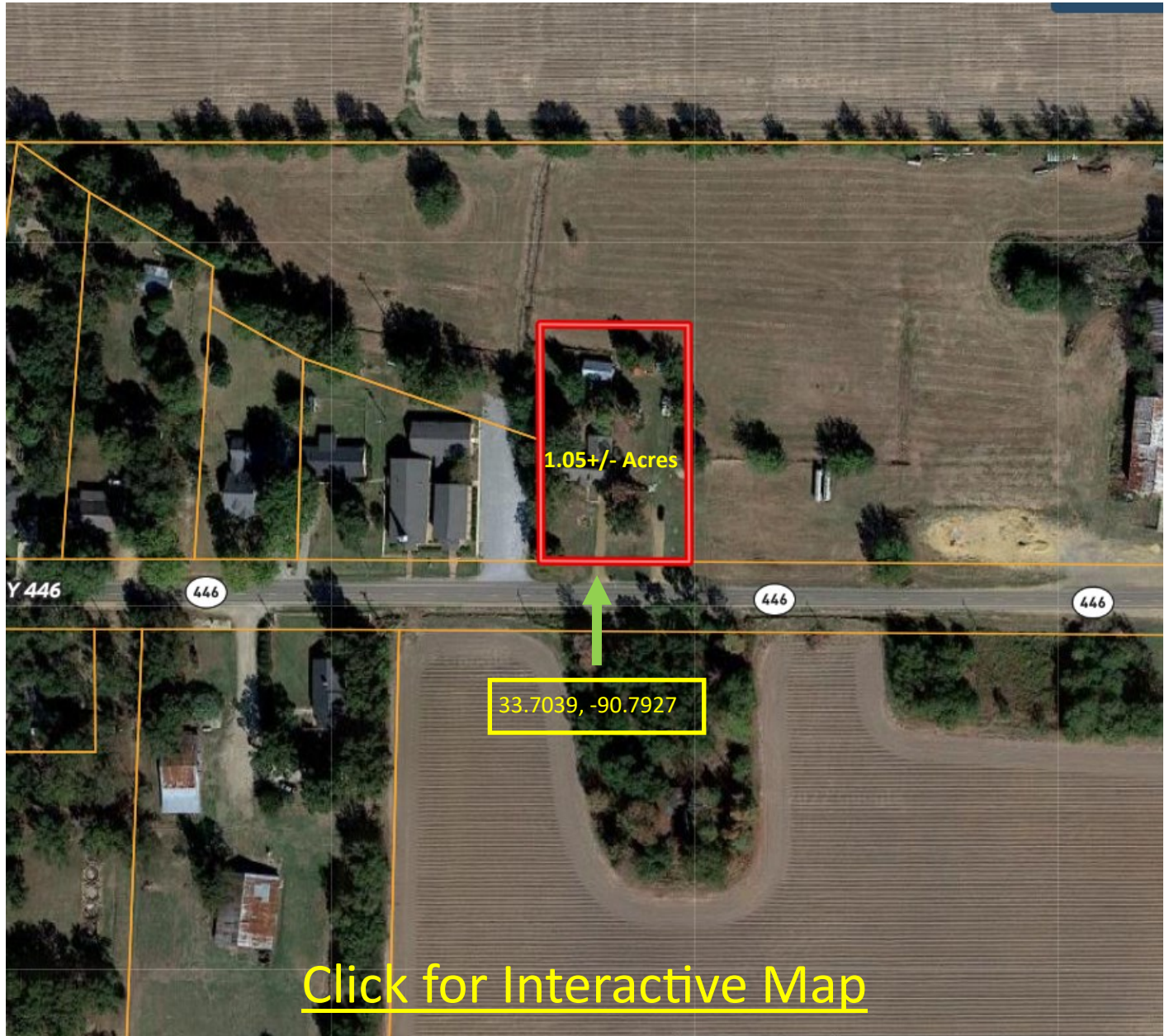
TomSmithLandandHomes.com

Information is believed to be accurate but not guaranteed.





AERIAL MAP



Call me today!

TRACEY BELL, MANAGING BROKER
Tracey@TomSmithLand.com
662.441.2500 **office** | 662.719.4720 **cell**



TomSmithLandandHomes.com

Information is believed to be accurate but not guaranteed.

OWNERSHIP MAP



Call me today!

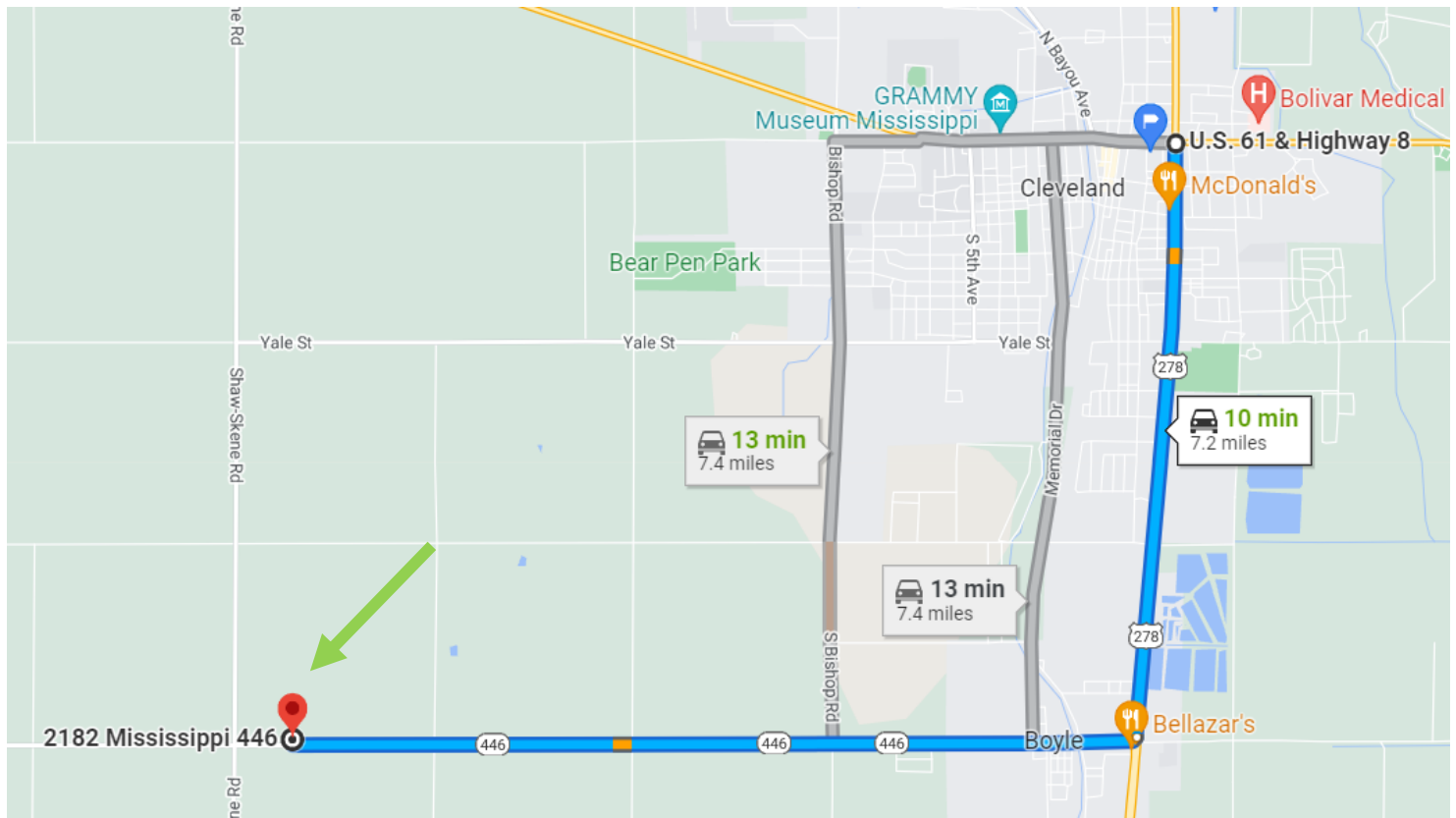
TRACEY BELL, MANAGING BROKER
Tracey@TomSmithLand.com
662.441.2500 **office** | 662.719.4720 **cell**



TomSmithLandandHomes.com

Information is believed to be accurate but not guaranteed.

DIRECTIONAL MAP



2182 Hwy 446 Boyle, MS 38730

Directions from the corner of HWY 61 and HWY 8 in Cleveland, MS: Travel south on Hwy 61 for approximately 3.0 miles. Turn right onto Hwy 446 and in 4.2 miles the destination is on the right. [Click for Google Maps.](#)

Call me today!

TRACEY BELL, MANAGING BROKER
Tracey@TomSmithLand.com
662.441.2500 **office** | 662.719.4720 **cell**



Expect More. Get More.

TomSmithLandandHomes.com

Information is believed to be accurate but not guaranteed.