

Great Opportunity to Own a Home with Acreage

Leake County, MS



\$145,000

This is an amazing opportunity to own a home with acreage in Leake County, MS. The home is approximately 1,950sqft with three spacious bedrooms and an area that could be used as an office space. The kitchen and living room have an open concept with a long bar and two bathrooms, one in the owner's suite and one on the other side of the home. There is a huge 15ftx25ft front porch. The home is on 3+/- acres with 1.5+/- acres fenced in for horses with a 20ftx15ft barn inside the fenced area. Just outside the fenced area for the horses is a 10ftx10ft dog pen. There is a 20ftx20ft shop/shed with attached 20ftx20ft covered parking. There is also an above-ground pool perfect for an escape from some of that summertime heat! For your private viewing, call Travis Smith today!

Address: 1033 Jolly Rd Carthage, MS [GOOGLE MAPS LINK](#)



Call me today!

TRAVIS SMITH, REALTOR®
Travis@TomSmithLand.com
601.898.2772 **office** | 601.600.0428 **cell**



TomSmithLandandHomes.com

Information is believed to be accurate but not guaranteed.



Call me today!



TRAVIS SMITH, REALTOR®
 Travis@TomSmithLand.com
 601.898.2772 **office** | 601.600.0428 **cell**



TomSmithLandandHomes.com

Information is believed to be accurate but not guaranteed.



Call me today!



TRAVIS SMITH, REALTOR®
 Travis@TomSmithLand.com
 601.898.2772 **office** | 601.600.0428 **cell**



Expect More. Get More.

TomSmithLandandHomes.com

Information is believed to be accurate but not guaranteed.



Call me today!



TRAVIS SMITH, REALTOR®
 Travis@TomSmithLand.com
 601.898.2772 **office** | 601.600.0428 **cell**

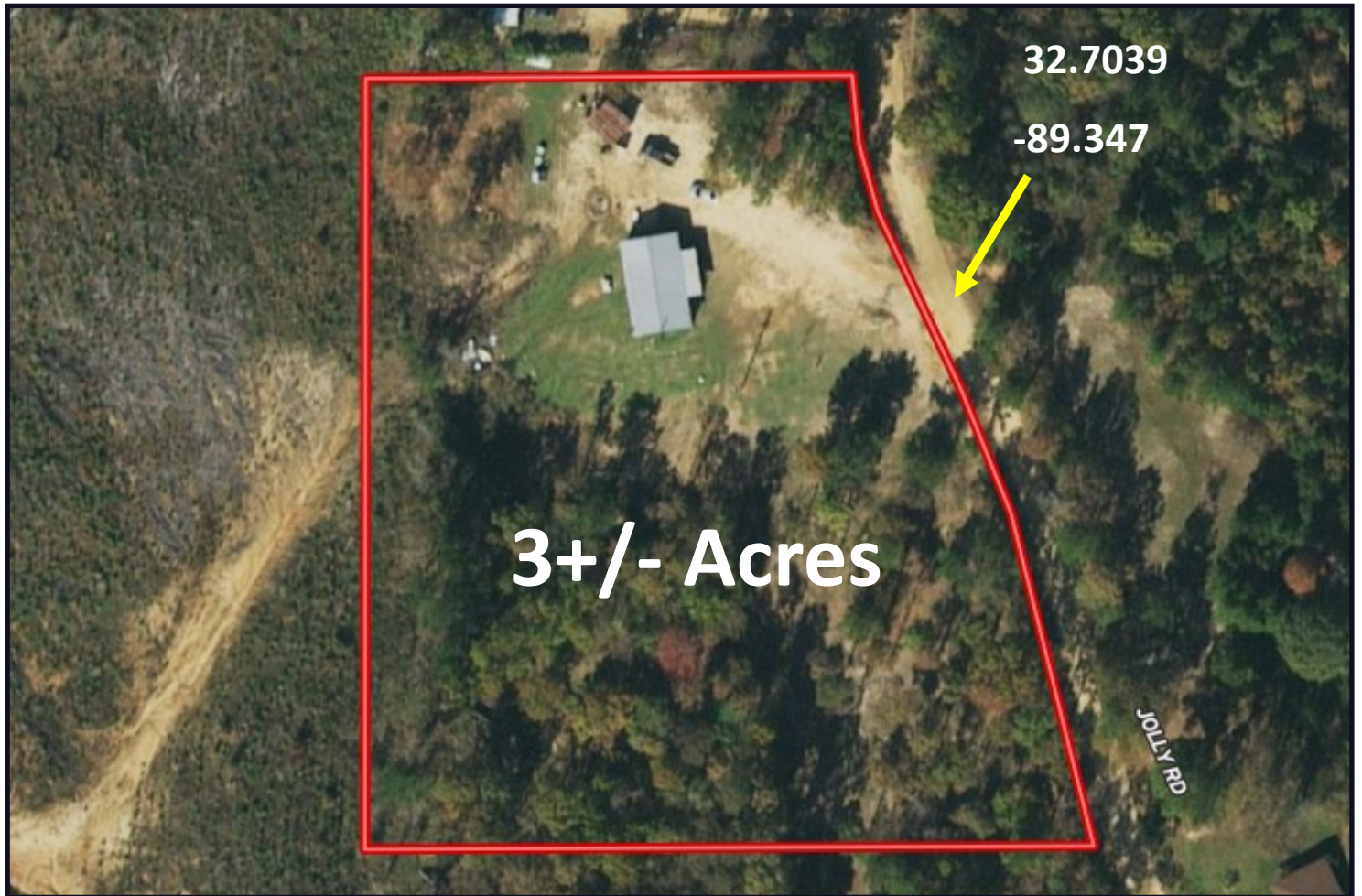


Expect More. Get More.

TomSmithLandandHomes.com

Information is believed to be accurate but not guaranteed.

AERIAL MAP



CLICK [HERE](#) FOR AN INTERACTIVE MAP

*Call me
today!*

TRAVIS SMITH, REALTOR®
Travis@TomSmithLand.com
601.898.2772 **office** | 601.600.0428 **cell**

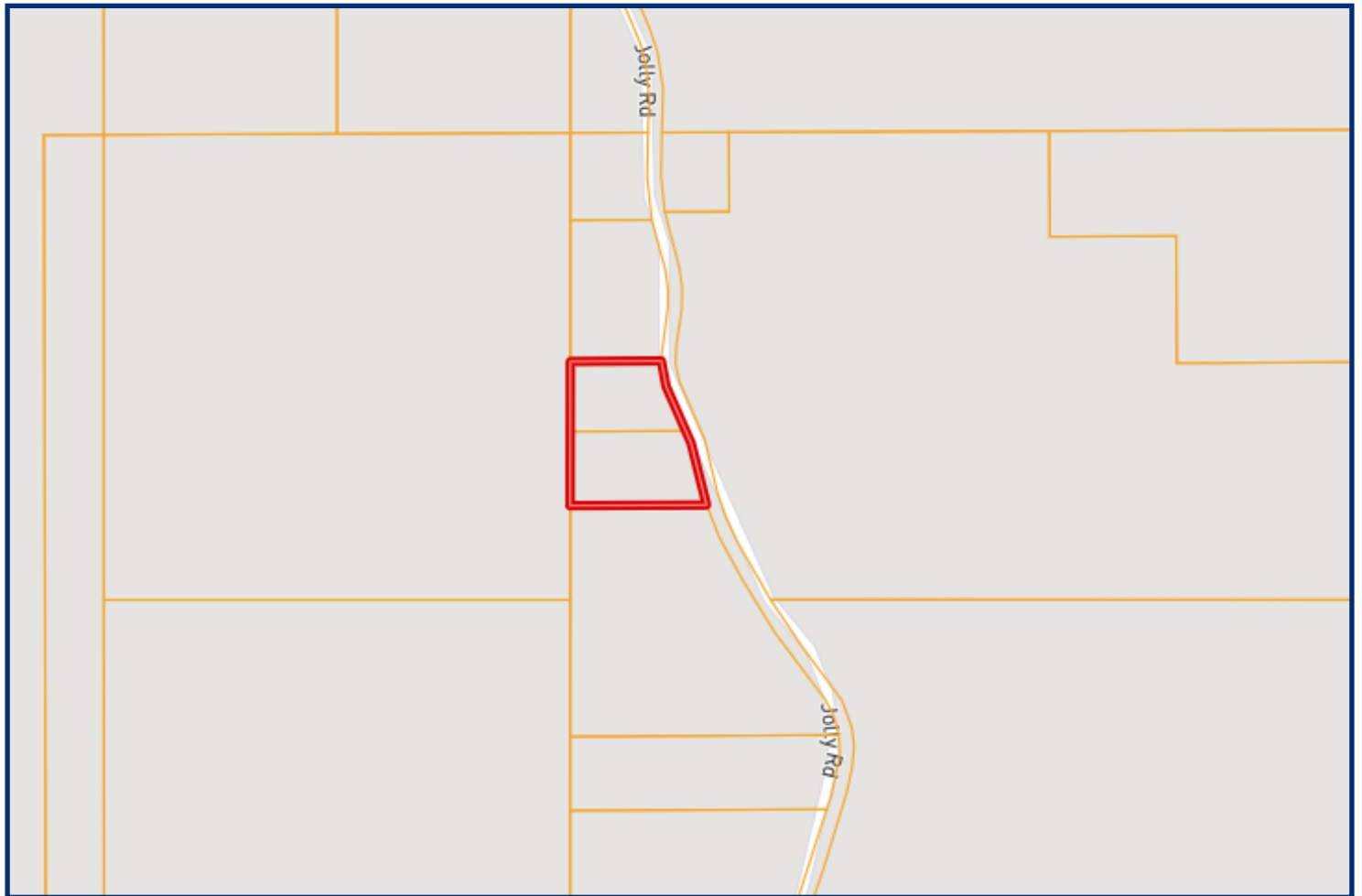


Expect More. Get More.

TomSmithLandandHomes.com

Information is believed to be accurate but not guaranteed.

OWNERSHIP MAP



*Call me
today!*

TRAVIS SMITH, REALTOR®
Travis@TomSmithLand.com
601.898.2772 **office** | 601.600.0428 **cell**

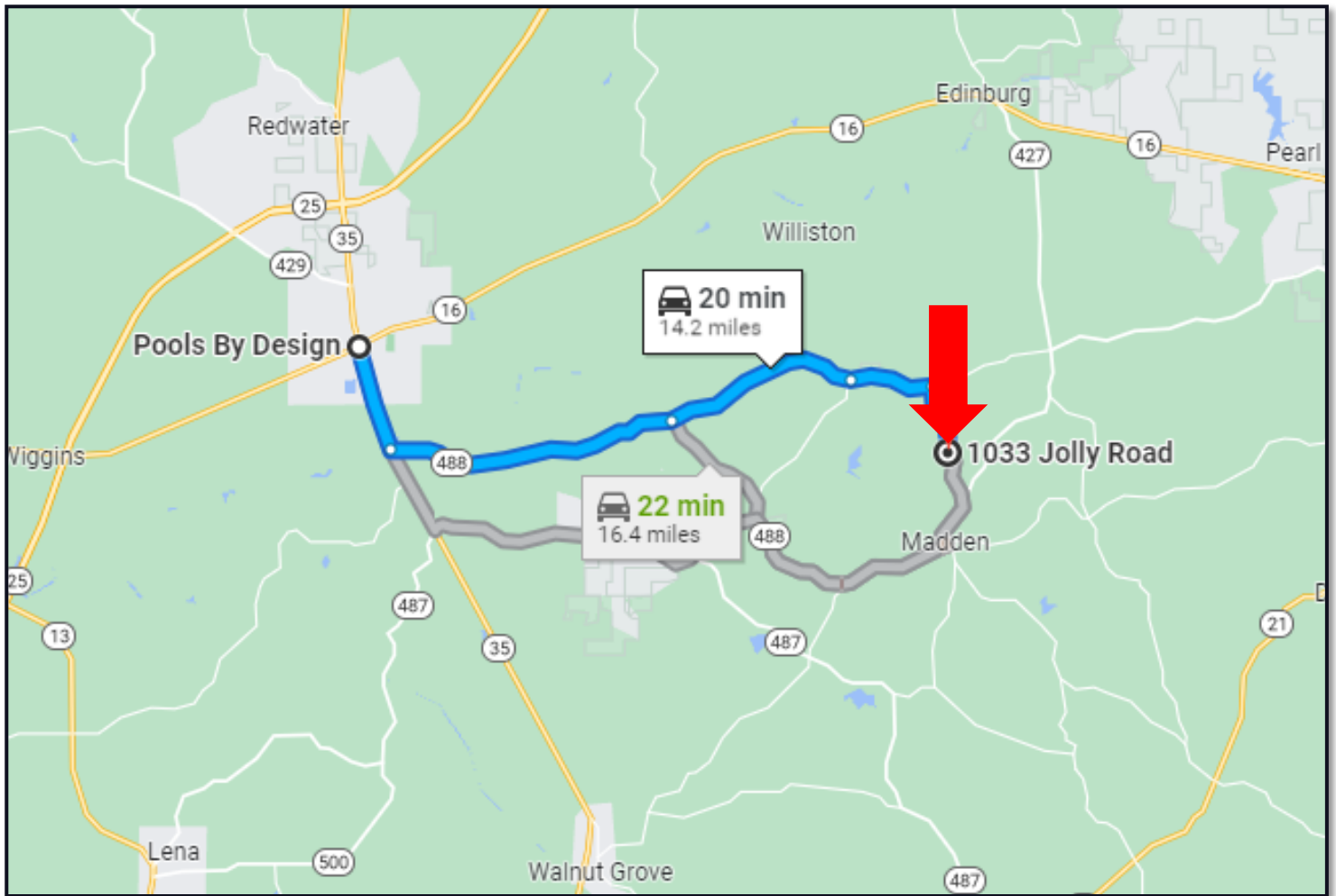


Expect More. Get More.

TomSmithLandandHomes.com

Information is believed to be accurate but not guaranteed.

DIRECTIONAL MAP



DIRECTIONS FROM FOUR WAY STOP OF HWY 16 AND HWY 35 IN CARTHAGE, MS: Head south on MS-35 S toward Edwards St and travel for 2 miles. Turn left onto MS-488 E and travel for 5.5 miles. Turn left onto Galilee Rd and travel for 3.8 miles. Take a slight left onto Laurel Hill Rd and travel for 1.6 miles. Turn right onto Jolly Rd, and the property will be on the right in 1.3 miles.

[GOOGLE MAP LINK](#)



Call me today!

TRAVIS SMITH, REALTOR®
Travis@TomSmithLand.com
601.898.2772 **office** | 601.600.0428 **cell**



TomSmithLandandHomes.com

Information is believed to be accurate but not guaranteed.