

# COUNTRY STORE ON 1± ACRES LINCOLN COUNTY, MS



The Caseyville Community Store is for sale! Located in Wesson, MS, in northwest Lincoln County, this place has been a staple of the community for decades! The store was recently operated as a convenience store that served hot lunches and sold groceries, but the potential for a new business is nearly limitless! There are three gas pumps, and two diesel pumps to service the fuel needs of customers. There is a large 25x50 foot metal shop with four 10x12ft roll-up doors, previously used as a tire shop and then transitioned into storage. The metal shop also features a large office, kitchen, and full bath, giving the option for a residence on the property should the new owner choose to do so. So many possibilities for the entrepreneur on this excellent commercial property in Wesson, MS! Come and take a look! Call Preston Smith for a private showing today!

Directions from the intersection of I-55 and MS 550 in Brookhaven, MS: Take Exit 42 towards North Brookhaven, in .1 mile, keep right at the fork and merge onto Dunn-Ratliff Rd NW, in 2.7 miles, turn right onto MS-550 W, in 10 miles, the property will be on the left.

Address: 3657 Hwy 550 W, Wesson, MS 39191



*Call me today!*

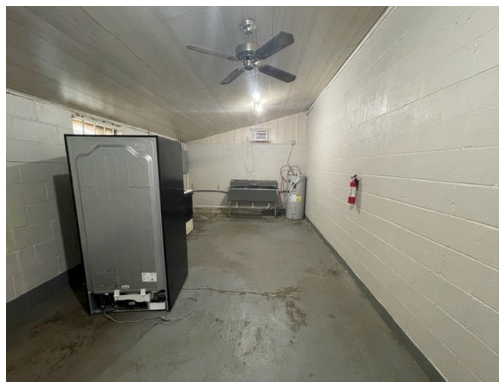
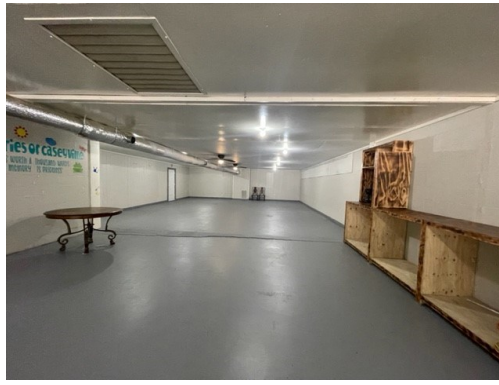
**PRESTON SMITH**, MANAGING BROKER  
Preston@TomSmithLand.com  
601.990.5070 **office** | 601.209.7150 **cell**



**TomSmithLandandHomes.com**

Information is believed to be accurate but not guaranteed.





*Call me today!*

**PRESTON SMITH**, MANAGING BROKER  
 Preston@TomSmithLand.com  
 601.990.5070 **office** | 601.209.7150 **cell**



**TomSmithLandandHomes.com**

Information is believed to be accurate but not guaranteed.





*Call me today!*

**PRESTON SMITH**, MANAGING BROKER  
 Preston@TomSmithLand.com  
 601.990.5070 **office** | 601.209.7150 **cell**

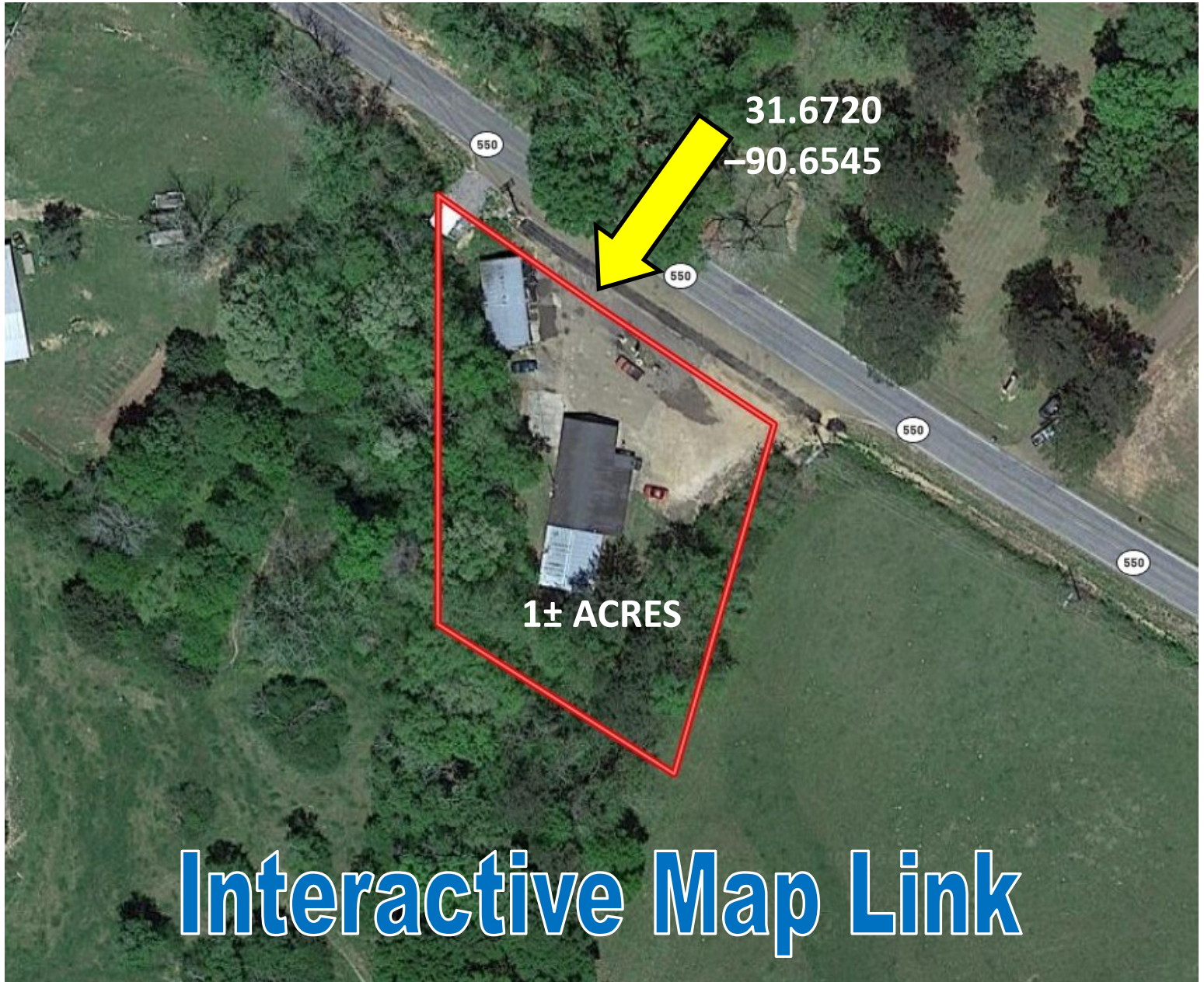


**TomSmithLandandHomes.com**

Information is believed to be accurate but not guaranteed.



# Aerial Map



*Call me today!*

**PRESTON SMITH**, MANAGING BROKER  
Preston@TomSmithLand.com  
601.990.5070 **office** | 601.209.7150 **cell**

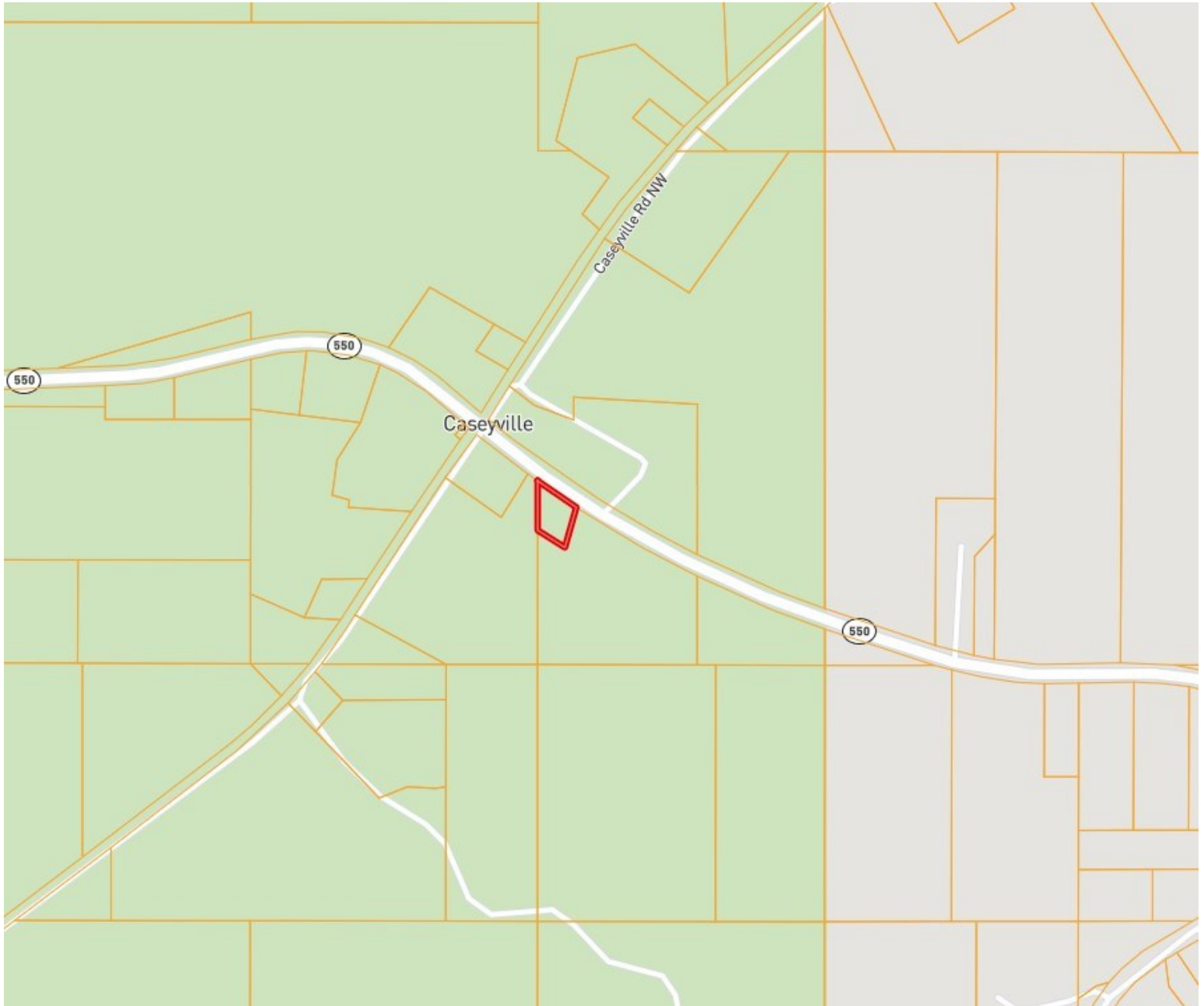


Expect More. Get More.

**TomSmithLandandHomes.com**

Information is believed to be accurate but not guaranteed.

# Ownership Map



*Call me today!*

**PRESTON SMITH**, MANAGING BROKER  
Preston@TomSmithLand.com  
601.990.5070 **office** | 601.209.7150 **cell**



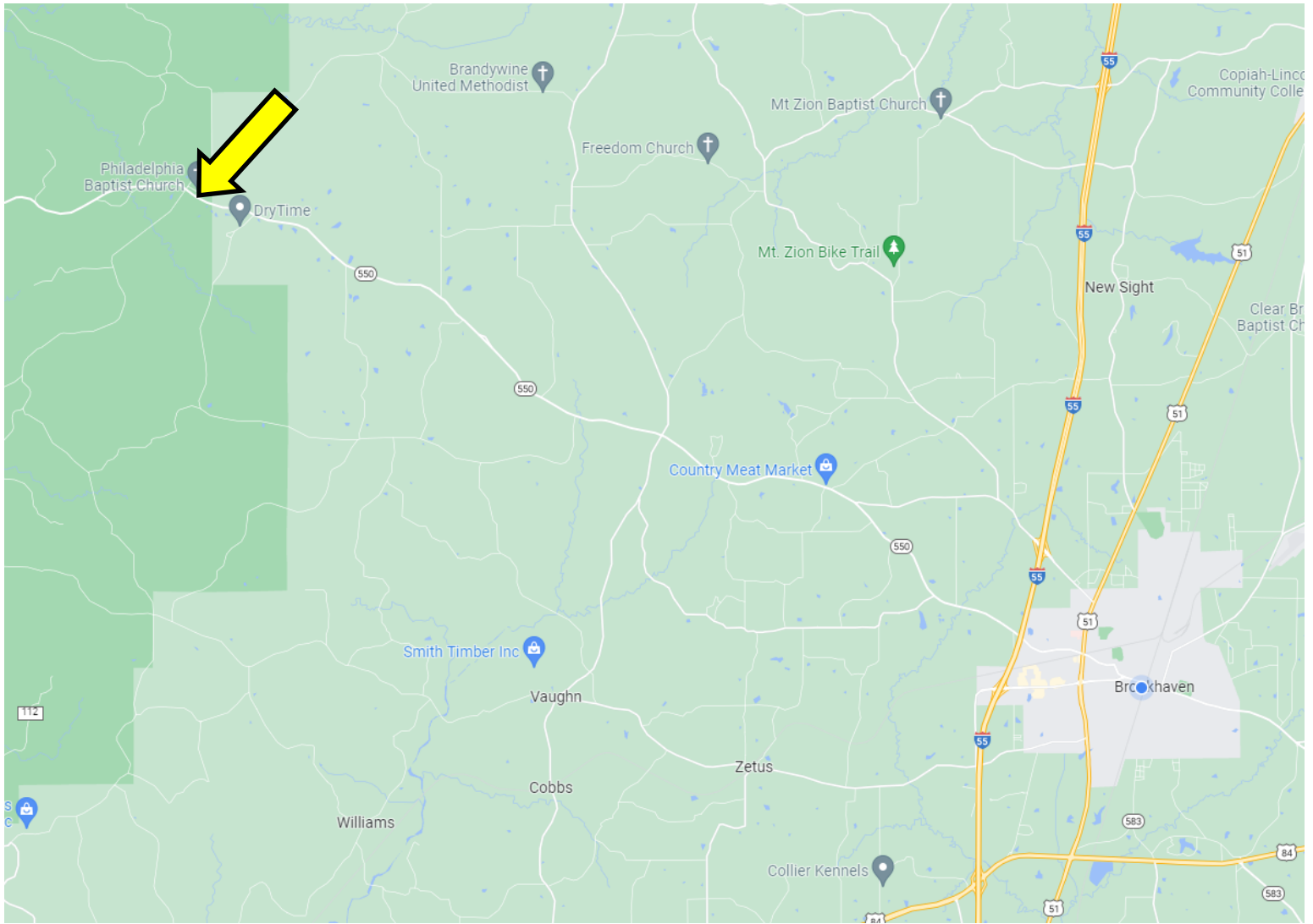
Expect More. Get More.

**TomSmithLandandHomes.com**

Information is believed to be accurate but not guaranteed.



# Directional Map



## Google Map Link

Directions from the intersection of I-55 and MS 550 in Brookhaven, MS: Take Exit 42 towards North Brookhaven, in .1 mile, keep right at the fork and merge onto Dunn-Ratliff Rd NW, in 2.7 miles, turn right onto MS-550 W, in 10 miles, the property will be on the left.

Address: 3657 Hwy 550 W, Wesson, MS 39191

*Call me today!*

**PRESTON SMITH**, MANAGING BROKER  
Preston@TomSmithLand.com  
601.990.5070 **office** | 601.209.7150 **cell**



Expect More. Get More.

# TomSmithLandandHomes.com

Information is believed to be accurate but not guaranteed.