

6.85+/- Acre Residential or Commercial opportunity in Amite County, MS



000 Union St.
Gloster, MS 39638

\$55,000

As Amite County, MS, welcomes the construction of a new sawmill in Gloster, here is your opportunity to purchase a great tract in the city limits. This 6.85+/- acre tract is ready for the next opportunity. Whether it is a commercial or residential endeavor, this property is well-suited for an investor. The development opportunities are endless, with road frontage on Union, Kahnville, and MS-24. This would be a great tract for the development of residential housing or for breaking up into smaller pieces. A retail store is being built on the corner, allowing retail investors to capitalize on the high-traffic area being created. This prime location has already been identified as a great location for an apartment complex. Don't miss out on your opportunity. Restrictions apply, so contact Clif Cannon today to learn more about this fantastic opportunity.

From the intersection of MS-33 and US-24 in Gloster, MS: Travel southwest on US-24 for 1.1 miles. Turn right onto Union Street and travel .2 miles. The property will be on the right

[Google Maps](#)

Call me today!

CLIF CANNON, REALTOR®
Clif@TomSmithLand.com
601.990.5070 office | 601.565.1070 cell



Expect More. Get More.



TomSmithLandandHomes.com

Information is believed to be accurate but not guaranteed.



CLIF CANNON, REALTOR®
Clif@TomSmithLand.com
601.990.5070 **office** | 601.565.1070 **cell**



TomSmithLandandHomes.com

Information is believed to be accurate but not guaranteed.



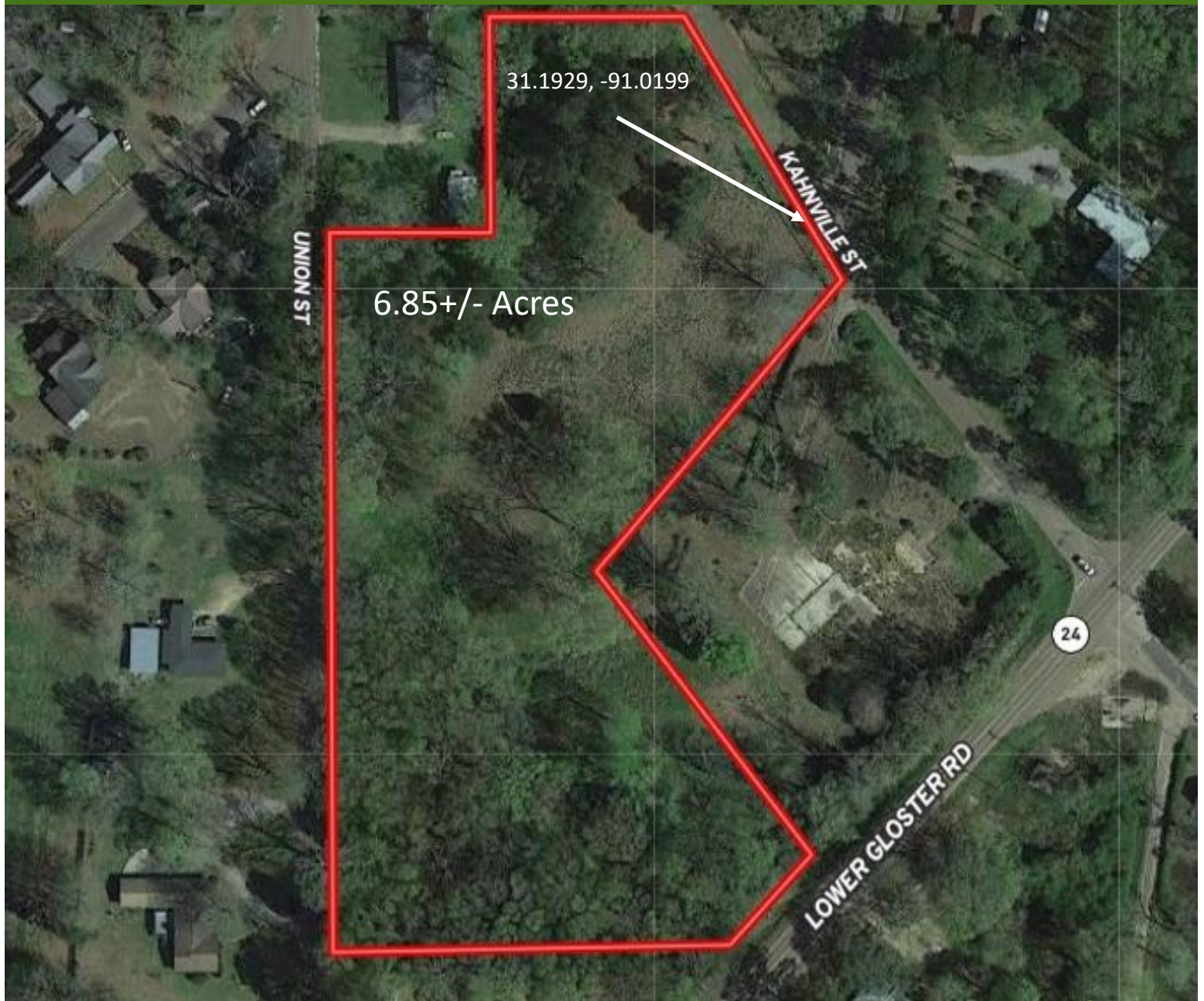
CLIF CANNON, REALTOR®
Clif@TomSmithLand.com
601.990.5070 **office** | 601.565.1070 **cell**



TomSmithLandandHomes.com

Information is believed to be accurate but not guaranteed.

Aerial Map



[Interactive Map](#)

Call me today!

CLIF CANNON, REALTOR®

Clif@TomSmithLand.com

601.990.5070 **office** | 601.565.1070 **cell**

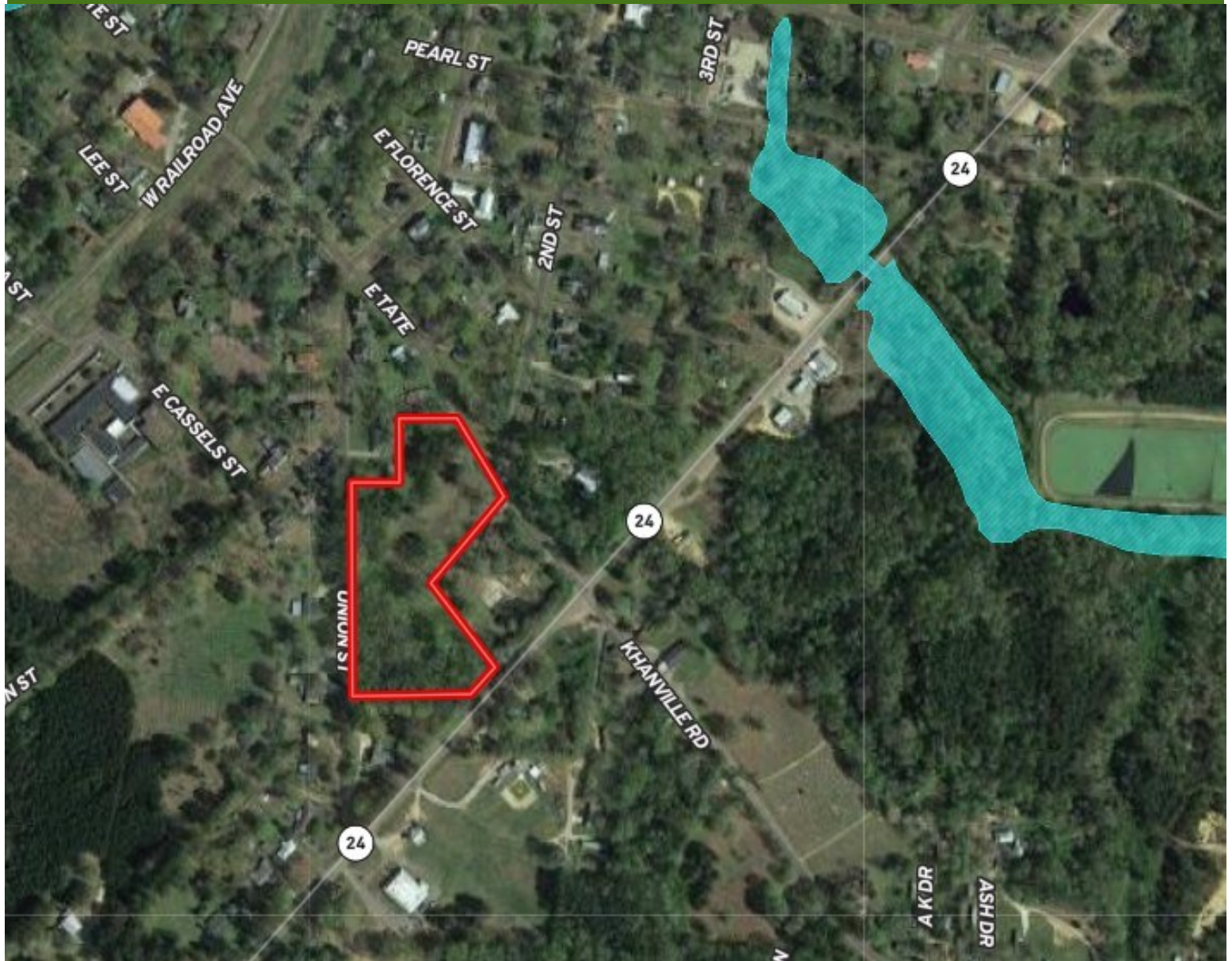


Expect More. Get More.

TomSmithLandandHomes.com

Information is believed to be accurate but not guaranteed.

Flood Map



Call me today!

CLIF CANNON, REALTOR®

Clif@TomSmithLand.com

601.990.5070 **office** | 601.565.1070 **cell**



Expect More. Get More.

TomSmithLandandHomes.com

Information is believed to be accurate but not guaranteed.

Topographic Map



Call me today!

CLIF CANNON, REALTOR®

Clif@TomSmithLand.com

601.990.5070 **office** | 601.565.1070 **cell**



Expect More. Get More.

TomSmithLandandHomes.com

Information is believed to be accurate but not guaranteed.

Ownership Map



Call me today!

CLIF CANNON, REALTOR®

Clif@TomSmithLand.com

601.990.5070 **office** | 601.565.1070 **cell**



Expect More. Get More.

TomSmithLandandHomes.com

Information is believed to be accurate but not guaranteed.

Directional Map



[Google Maps](#)

From the intersection of MS-33 and US-24 in Gloster, MS: Travel southwest on US-24 for 1.1 miles. Turn right onto Union Street and travel .2 miles. The property will be on the right

000 Union Street
Gloster, MS 39638

Call me today!

CLIF CANNON, REALTOR®
Clif@TomSmithLand.com
601.990.5070 **office** | 601.565.1070 **cell**



TomSmithLandandHomes.com

Information is believed to be accurate but not guaranteed.