

.36+/- acre Waterfront Lot in Hancock County, MS



000 Bayou Drive
Bay St. Louis, MS 39520

\$30,000

If you are looking to build in Hancock County, MS, this .36+/- acre lot with water frontage on Bayou Drive is it! This heavily wooded lot is perfect for a home or recreational property. The Canal connects to Bayou LaCroix, offering a short boat ride to the Jordan River and the Gulf of Mexico. The property is located on a quiet street away from the hustle and bustle of city life while offering the convenience of the city close by. The minimum building height is at least 18 ft. Power is available at the road; other utilities may be available through the county water district.

Directions from the intersection of Interstate 10 and MS-603 South in Bay St. Louis, MS: Travel south on MS-603 for 3 miles. Turn right onto Tigris St and travel for .3 miles. Turn right onto Tombigbee St and travel for .1 miles. Turn left onto River St and travel for .3 miles. This will become Trout St. continue straight for .1 miles. Turn right Linden Lane and travel for .1 miles. Turn right onto Bayou Drive and travel for .2 miles. The property will be on the right.

[Google Maps](#)



Call me today!

CLIF CANNON, REALTOR®
Clif@TomSmithLand.com
601.990.5070 office | 601.565.1070 cell



TomSmithLandandHomes.com

Information is believed to be accurate but not guaranteed.



Call me today!

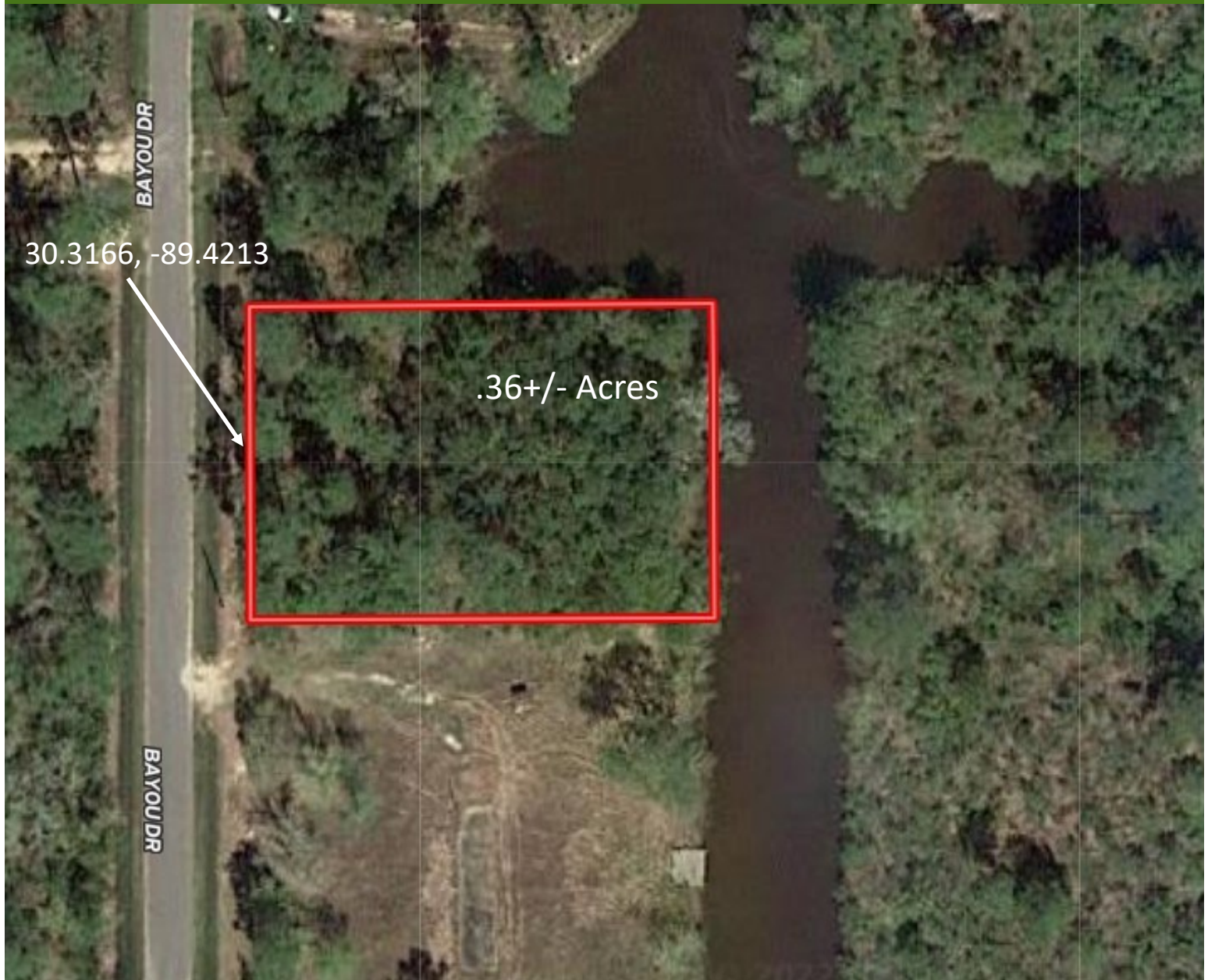
CLIF CANNON, REALTOR®
Clif@TomSmithLand.com
601.990.5070 office | 601.565.1070 cell

Tom Smith LAND AND HOMES
Expect More. Get More.

LandDrops
2011-2022
AMERICA'S
BEST
BROKERAGES

TomSmithLandandHomes.com

Aerial Map



[Interactive Map](#)

Call me today!

CLIF CANNON, REALTOR®

Clif@TomSmithLand.com

601.990.5070 **office** | 601.565.1070 **cell**



Expect More. Get More.

TomSmithLandandHomes.com

Information is believed to be accurate but not guaranteed.

Topographic Map



Call me today!

CLIF CANNON, REALTOR®

Clif@TomSmithLand.com

601.990.5070 **office** | 601.565.1070 **cell**

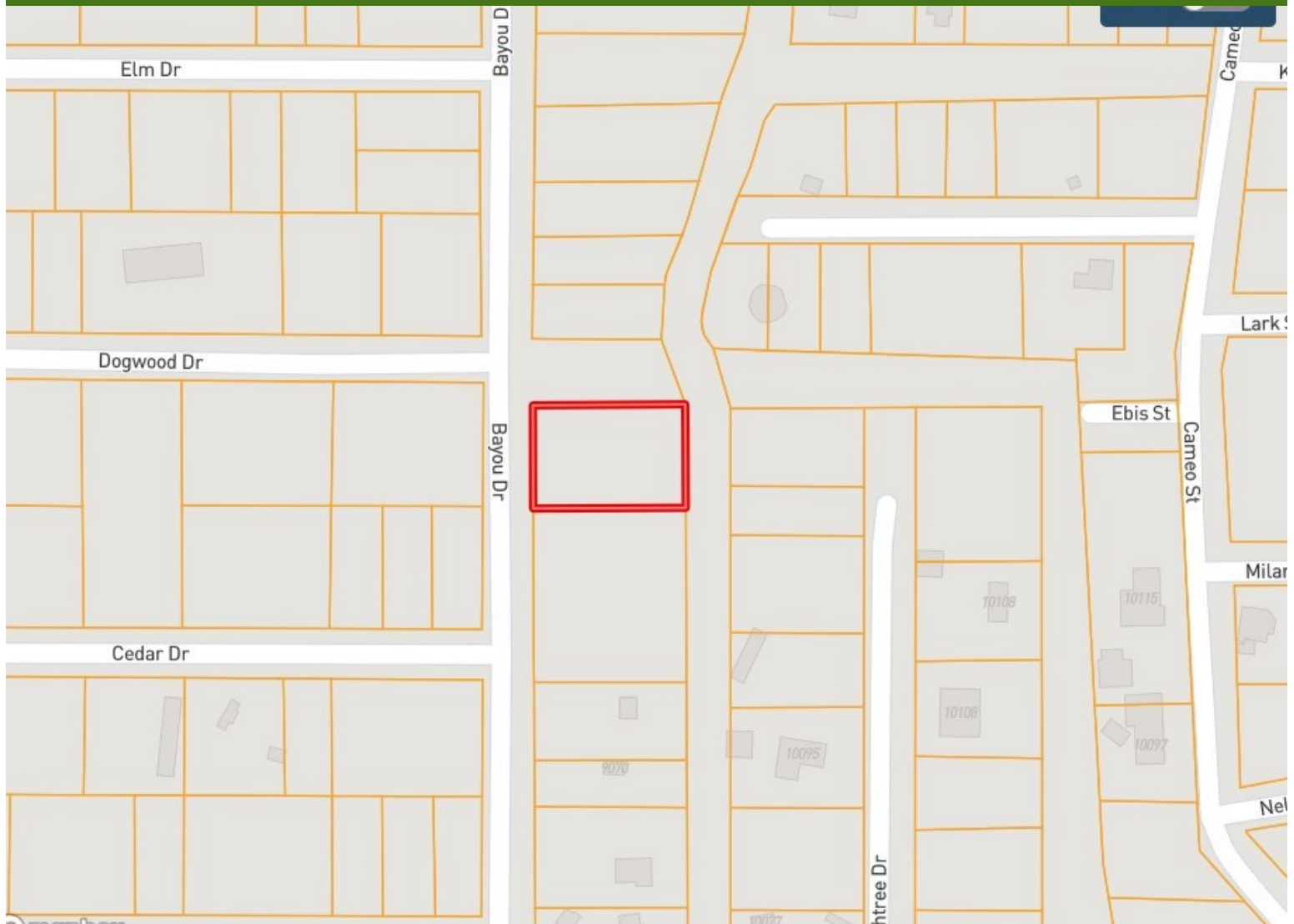


Expect More. Get More.

TomSmithLandandHomes.com

Information is believed to be accurate but not guaranteed.

Ownership Map



Call me today!

CLIF CANNON, REALTOR®

Clif@TomSmithLand.com

601.990.5070 **office** | 601.565.1070 **cell**

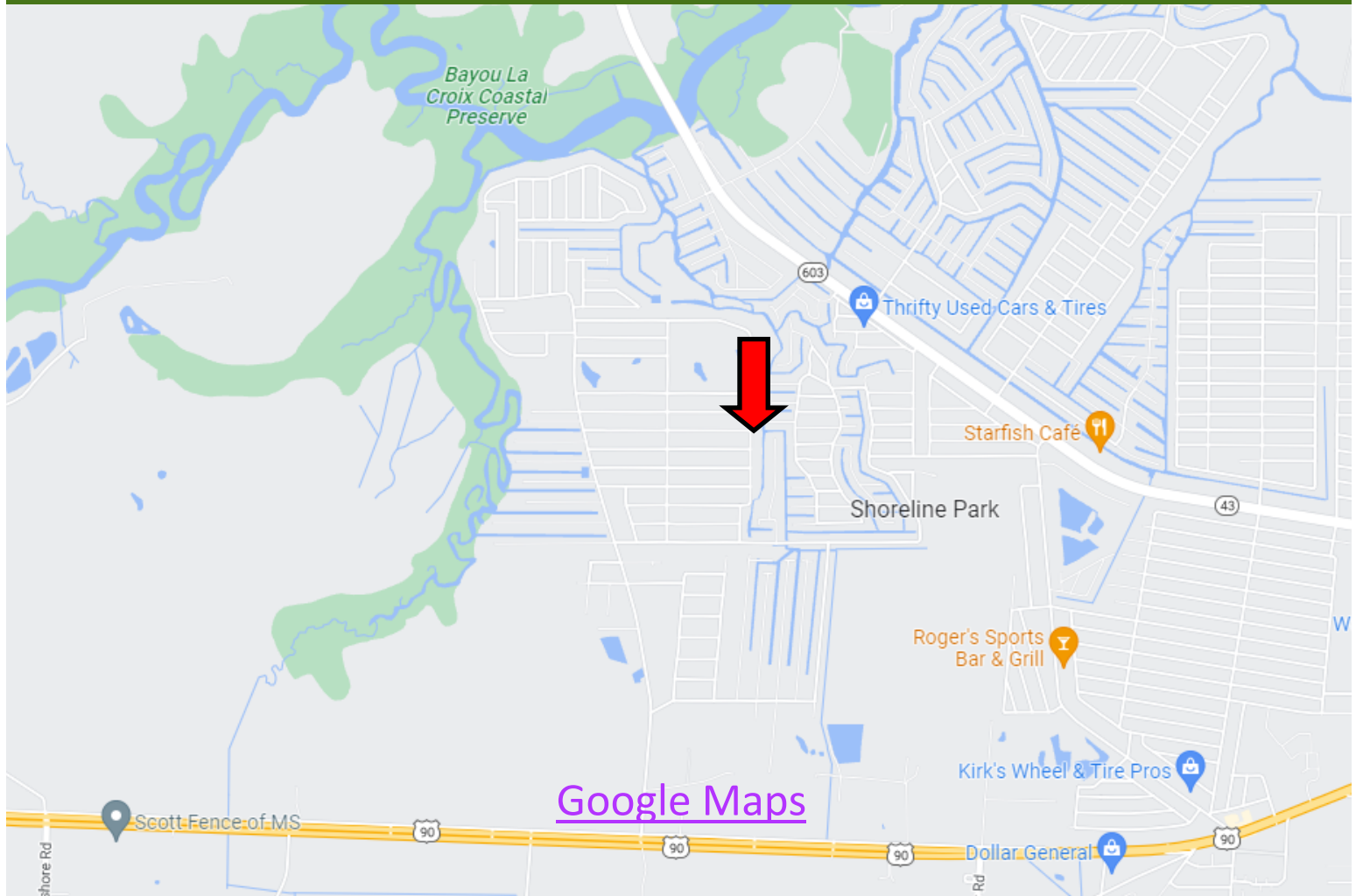


Expect More. Get More.

TomSmithLandandHomes.com

Information is believed to be accurate but not guaranteed.

Directional Map



Directions from the intersection of Interstate 10 and MS-603 South in Bay St. Louis, MS: Travel south on MS-603 for 3 miles. Turn right onto Tigris St and travel for .3 miles. Turn right onto Tombigbee St and travel for .1 miles. Turn left onto River St and travel for .3 miles. This will become Trout St. continue straight for 1 mile. Turn right onto Harbor Drive for .1 miles. Turn left onto 2nd St and travel 285ft. The property will be on the right.

000 2nd Street
Bay St. Louis, MS 39520

Call me today!

CLIF CANNON, REALTOR®
Clif@TomSmithLand.com
601.990.5070 **office** | 601.565.1070 **cell**



TomSmithLandandHomes.com

Information is believed to be accurate but not guaranteed.