



Custom Waterfront Cabin in Smith Point Bolivar County, MS



Agent Owned

\$385,000

Donaldson Point Rd. Gunnison, MS 38746

Welcome to your weekend getaway on Old River Lake inside the Mississippi River Levee, Bolivar County, MS, located 20 miles Northwest of Cleveland. This custom cabin was built for entertaining in 2012, is 2,688+/- sq. ft., and is located on 0.9+/- acres. The walls in the main living area are reclaimed red barn wood, the floors are heart of pine, and the rest is pine. There are four bedrooms and two bathrooms downstairs and two bedrooms and two bathrooms upstairs. The den has a gas fireplace and plenty of wall space for your trophy bucks! There are front and rear porches, a deck, and a firepit over the lake. A fishing membership is required for boating rights. Call Tracey today for your private showing! Cell (662)719-4720 or Office (662)441-2500.

Directions from the intersection of Hwy 8 and Hwy 61 in Cleveland, MS: Travel North on Hwy 61 for 11.5 miles, turn left onto Moody Rd. In 0.3 miles turn right onto Martin Luther King Memorial Drive, travel 0.7 miles. Continue onto MS 161 for 2.2 miles. In 0.2 Miles turn left onto W. Hearn Ave. and in 9.9 miles turn left onto S. Late St., turn right onto Boyd Lane Rd. Follow Boyd Lane Rd and Bobo Rd to Donaldson Point Rd. for 3.6 miles, the destination is on the right.



Call me today!

TRACEY BELL, MANAGING BROKER
Tracey@TomSmithLand.com
662.441.2500 **office** | 662.719.4720 **cell**



TomSmithLandandHomes.com

Information is believed to be accurate but not guaranteed.



Call me today!

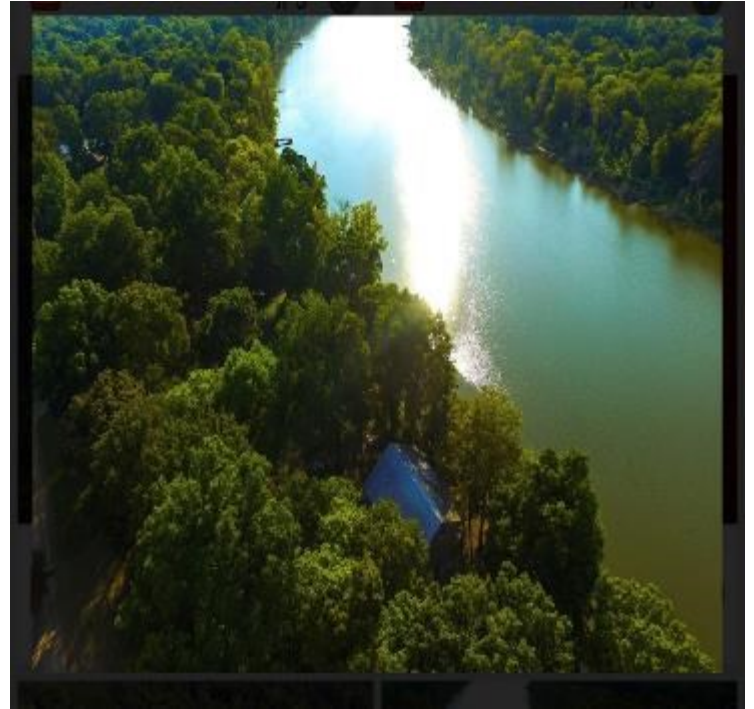
TRACEY BELL, MANAGING BROKER
Tracey@TomSmithLand.com
662.441.2500 **office** | 662.719.4720 **cell**

**Tom
Smith
LAND AND
HOMES**
Expect More. Get More.



TomSmithLandandHomes.com

Information is believed to be accurate but not guaranteed.



Call me today!

TRACEY BELL, MANAGING BROKER
 Tracey@TomSmithLand.com
 662.441.2500 **office** | 662.719.4720 **cell**



TomSmithLandandHomes.com

Information is believed to be accurate but not guaranteed.



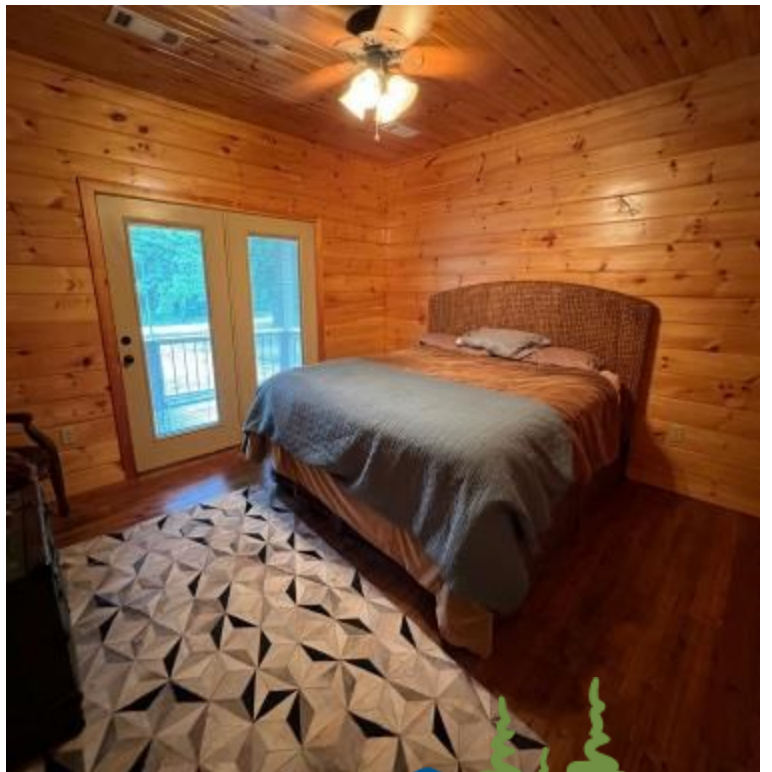
Call me today!

TRACEY BELL, MANAGING BROKER
 Tracey@TomSmithLand.com
 662.441.2500 **office** | 662.719.4720 **cell**



TomSmithLandandHomes.com

Information is believed to be accurate but not guaranteed.



Call me today!

TRACEY BELL, MANAGING BROKER
Tracey@TomSmithLand.com
662.441.2500 **office** | 662.719.4720 **cell**



TomSmithLandandHomes.com

Information is believed to be accurate but not guaranteed.



Call me today!



TRACEY BELL, MANAGING BROKER
 Tracey@TomSmithLand.com
 662.441.2500 **office** | 662.719.4720 **cell**



TomSmithLandandHomes.com

Information is believed to be accurate but not guaranteed.



Call me today!

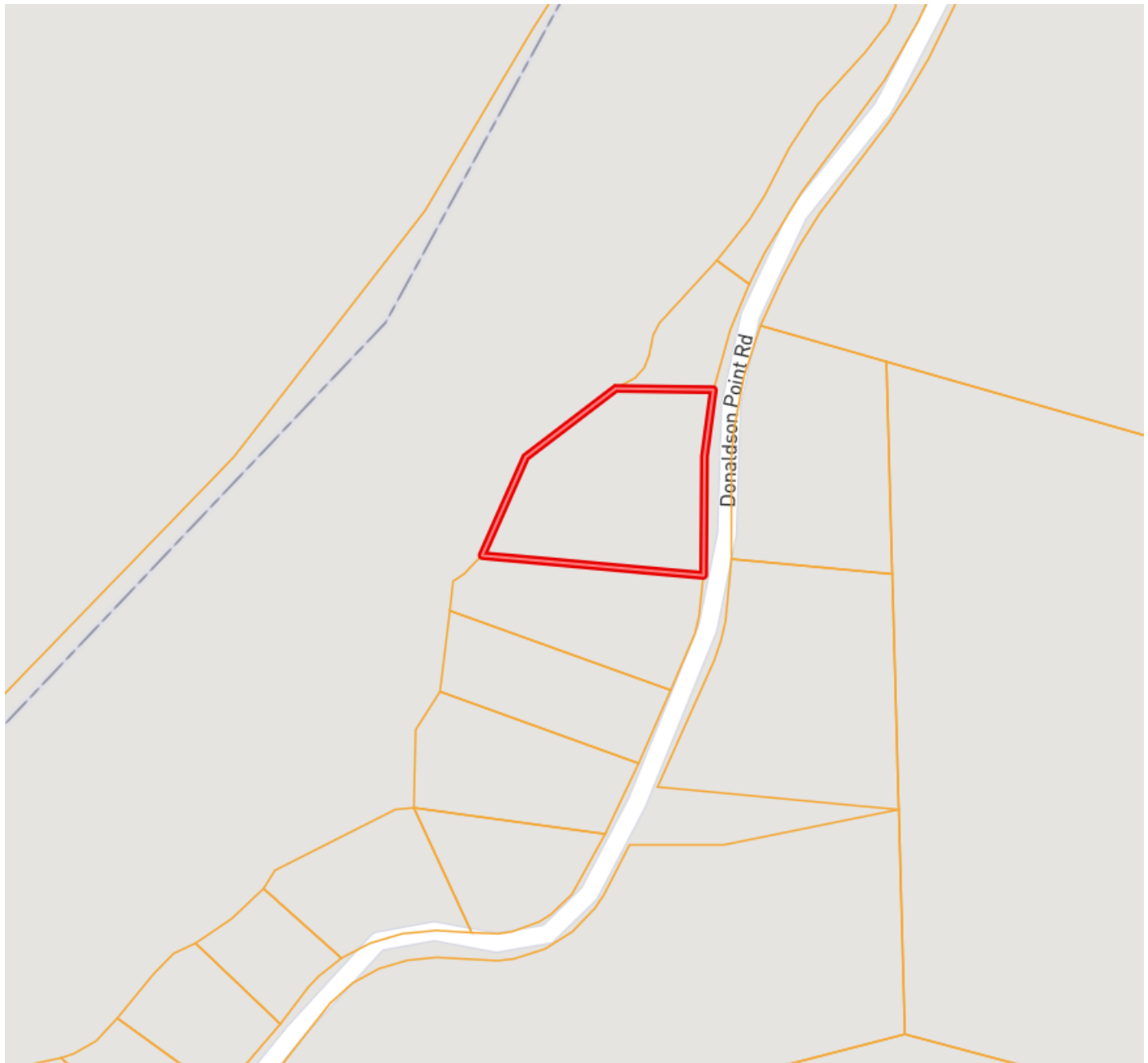


TRACEY BELL, MANAGING BROKER
 Tracey@TomSmithLand.com
 662.441.2500 **office** | 662.719.4720 **cell**

TomSmithLandandHomes.com

Information is believed to be accurate but not guaranteed.

OWNERSHIP MAP



Call me today!

TRACEY BELL, MANAGING BROKER
Tracey@TomSmithLand.com
662.441.2500 **office** | 662.719.4720 **cell**



TomSmithLandandHomes.com

Information is believed to be accurate but not guaranteed.

AERIAL MAP



Call me today!

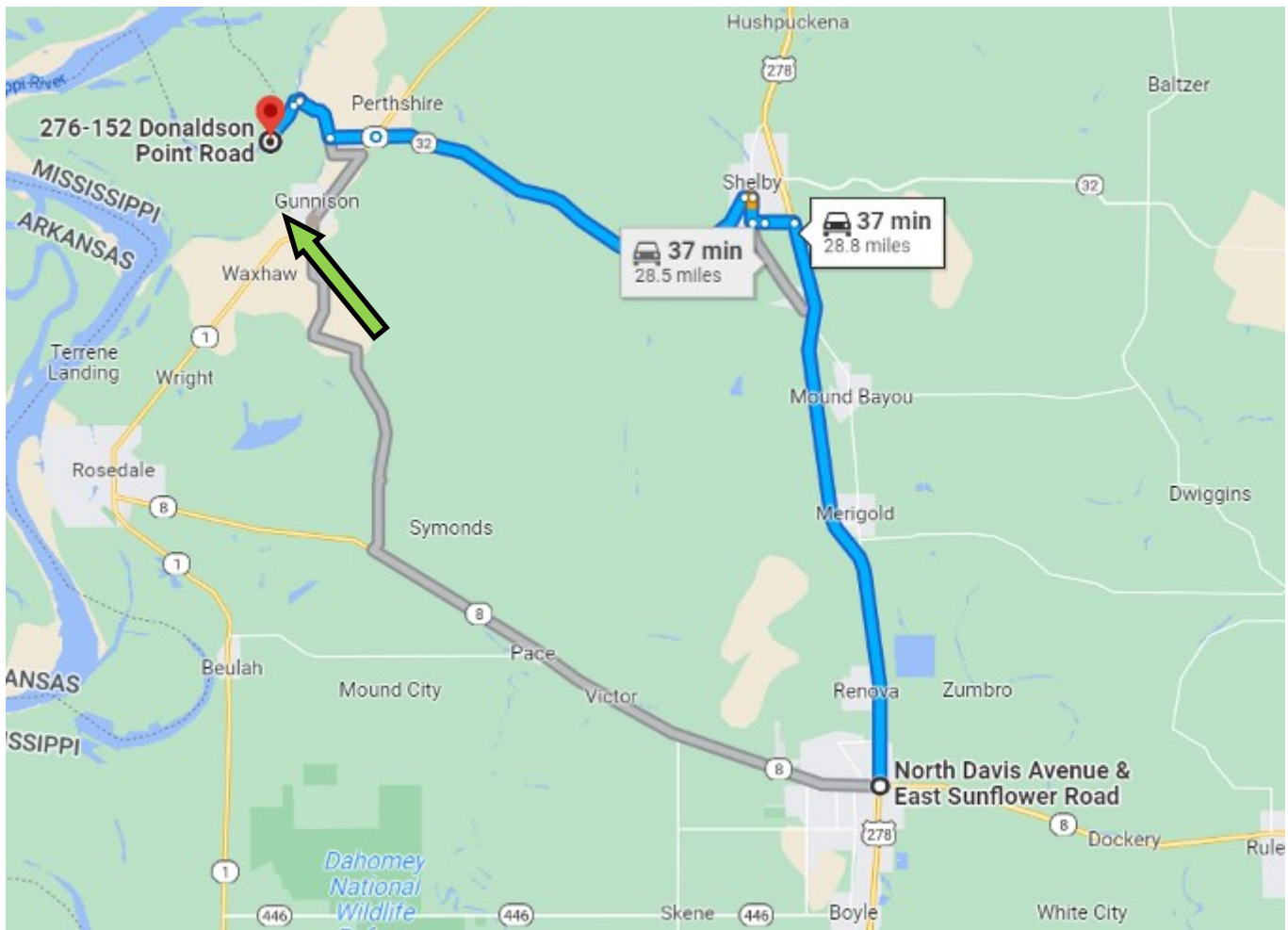
TRACEY BELL, MANAGING BROKER
Tracey@TomSmithLand.com
662.441.2500 **office** | 662.719.4720 **cell**



TomSmithLandandHomes.com

Information is believed to be accurate but not guaranteed.

DIRECTIONAL MAP



Donaldson Point Rd. Gunnison, MS 38746

Directions from the intersection of Hwy 8 and Hwy 61 in Cleveland, MS: Travel North on Hwy 61 for 11.5 miles, turn left onto Moody Rd. In 0.3 miles turn right onto Martin Luther King Memorial Drive, travel 0.7 miles. Continue onto MS 161 for 2.2 miles. In 0.2 Miles turn left onto W. Hearn Ave. and in 9.9 miles turn left onto S. Late St., turn right onto Boyd Lane Rd. Follow Boyd Lane Rd and Bobo Rd to Donaldson Point Rd. for 3.6 miles and the destination is on the right. [Click for Google Maps.](#)

Call me today!

TRACEY BELL, MANAGING BROKER
Tracey@TomSmithLand.com
662.441.2500 **office** | 662.719.4720 **cell**



TomSmithLandandHomes.com

Information is believed to be accurate but not guaranteed.