

Home and 27+/- Acres in Eupora Webster County, MS



\$129,000

3667 Mount Vernon Road
Eupora, MS 39744



This three bedroom, one bath house sits on 27+/- acres in Webster County, MS. This property would be ideal for someone looking for a small hunting property or mini-farm. This property features a garden area, rustic shop, small horse pen, and storage area. The property also includes a small, stocked pond that is conveniently located directly behind the home. Most of the property consists of pine plantation that is approximately twelve years old and some scattered mature hardwoods along the drainage areas. Call today to schedule your private showing!

Directions from Intersection of Hwy 82 and Hwy 9 in Eupora: Travel NW on Hwy 9 for 1.7 miles. Turn left onto Hall Road and travel 0.7 Miles. Turn right onto MLK Drive and travel 315 feet. Turn left onto Mount Vernon Road and travel 3. miles. The property will be on your right. [GOOGLE MAP](#)



HARPER DAY, REALTOR®
Harper@TomSmithLand.com
662.268.6333 office | 662.694.9751 cell



Expect More. Get More.

Call us today!



MICHAEL COOPER, REALTOR®
MCooper@TomSmithLand.com
662.268.6333 office | 662.285.8686 cell

TomSmithLandandHomes.com

Information is believed to be accurate but not guaranteed.





HARPER DAY, REALTOR®
Harper@TomSmithLand.com
662.268.6333 office | 662.694.9751 cell



Expect More. Get More.

Call us today!



MICHAEL COOPER, REALTOR®
MCooper@TomSmithLand.com
662.268.6333 office | 662.285.8686 cell

TomSmithLandandHomes.com

Information is believed to be accurate but not guaranteed.





HARPER DAY, REALTOR®
 Harper@TomSmithLand.com
 662.268.6333 office | 662.694.9751 cell



Expect More. Get More.

Call us today!



MICHAEL COOPER, REALTOR®
 MCooper@TomSmithLand.com
 662.268.6333 office | 662.285.8686 cell

TomSmithLandandHomes.com

Information is believed to be accurate but not guaranteed.





HARPER DAY, REALTOR®
Harper@TomSmithLand.com
662.268.6333 office | 662.694.9751 cell



Expect More. Get More.

Call us today!



MICHAEL COOPER, REALTOR®
MCooper@TomSmithLand.com
662.268.6333 office | 662.285.8686 cell

TomSmithLandandHomes.com

Information is believed to be accurate but not guaranteed.





HARPER DAY, REALTOR®
 Harper@TomSmithLand.com
 662.268.6333 office | 662.694.9751 cell



Expect More. Get More.

Call us today!

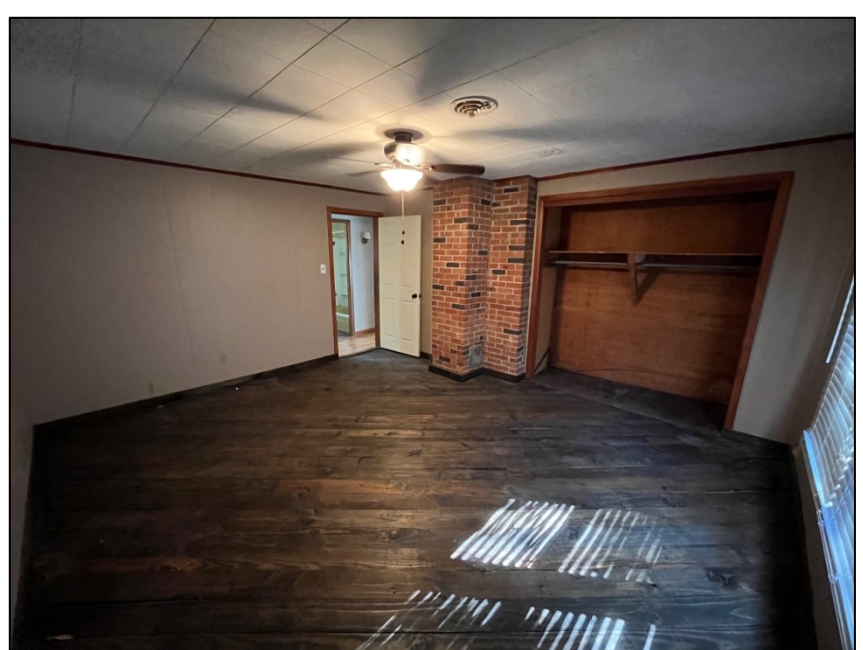


MICHAEL COOPER, REALTOR®
 MCooper@TomSmithLand.com
 662.268.6333 office | 662.285.8686 cell

TomSmithLandandHomes.com

Information is believed to be accurate but not guaranteed.





HARPER DAY, REALTOR®
Harper@TomSmithLand.com
662.268.6333 office | 662.694.9751 cell



Expect More. Get More.

Call us today!



MICHAEL COOPER, REALTOR®
MCooper@TomSmithLand.com
662.268.6333 office | 662.285.8686 cell

TomSmithLandandHomes.com

Information is believed to be accurate but not guaranteed.



Aerial Map

Interactive Map



HARPER DAY, REALTOR®
Harper@TomSmithLand.com
662.268.6333 office | 662.694.9751 cell



Expect More. Get More.

Call us today!



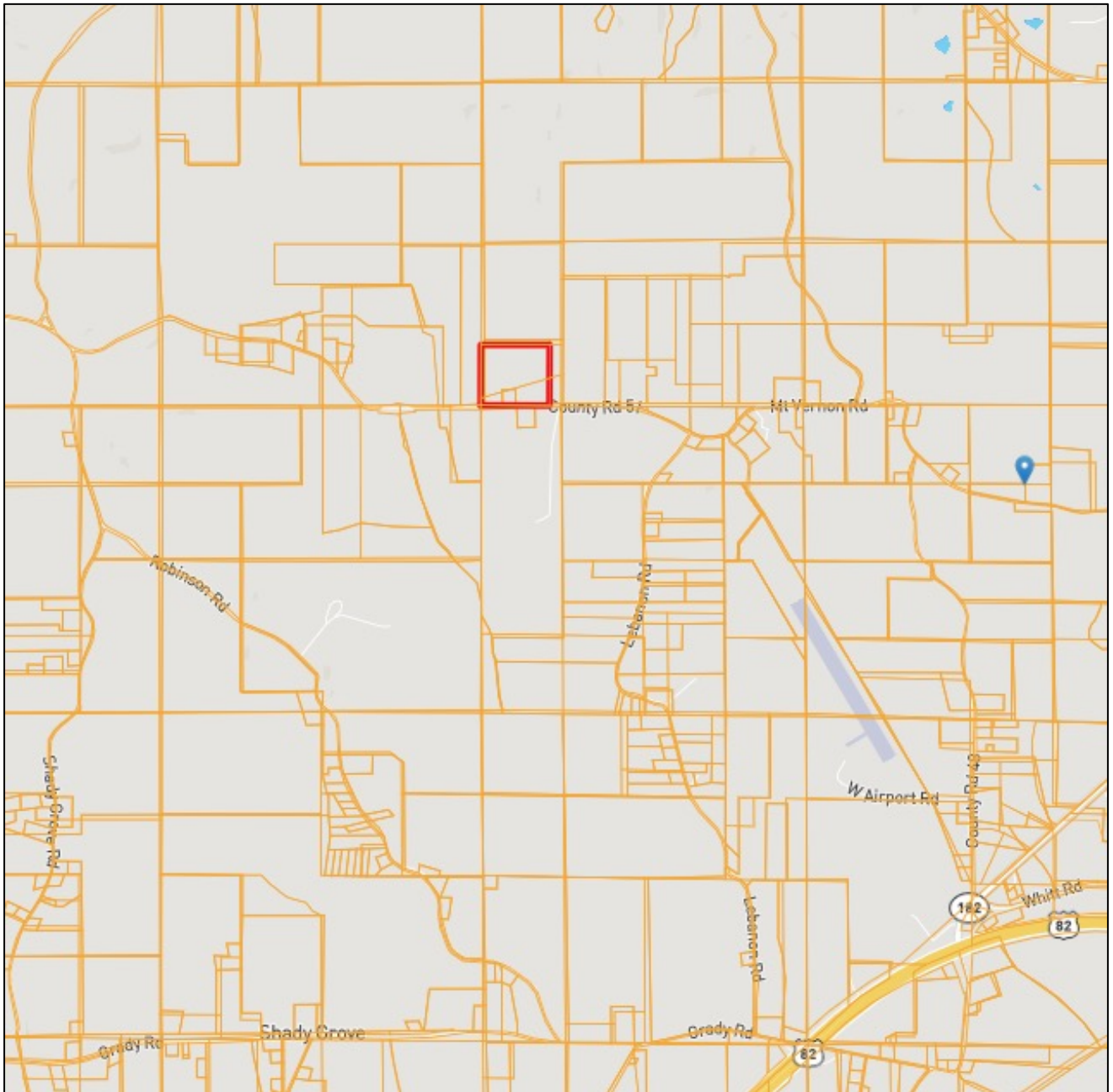
MICHAEL COOPER, REALTOR®
MCooper@TomSmithLand.com
662.268.6333 office | 662.285.8686 cell

TomSmithLandandHomes.com

Information is believed to be accurate but not guaranteed.



Ownership Map



HARPER DAY, REALTOR®
Harper@TomSmithLand.com
662.268.6333 office | 662.694.9751 cell



Expect More. Get More.

Call us today!



MICHAEL COOPER, REALTOR®
MCooper@TomSmithLand.com
662.268.6333 office | 662.285.8686 cell

TomSmithLandandHomes.com

Information is believed to be accurate but not guaranteed.



FEMA Flood and Water Feature Map



HARPER DAY, REALTOR®
Harper@TomSmithLand.com
662.268.6333 office | 662.694.9751 cell



Expect More. Get More.

Call us today!



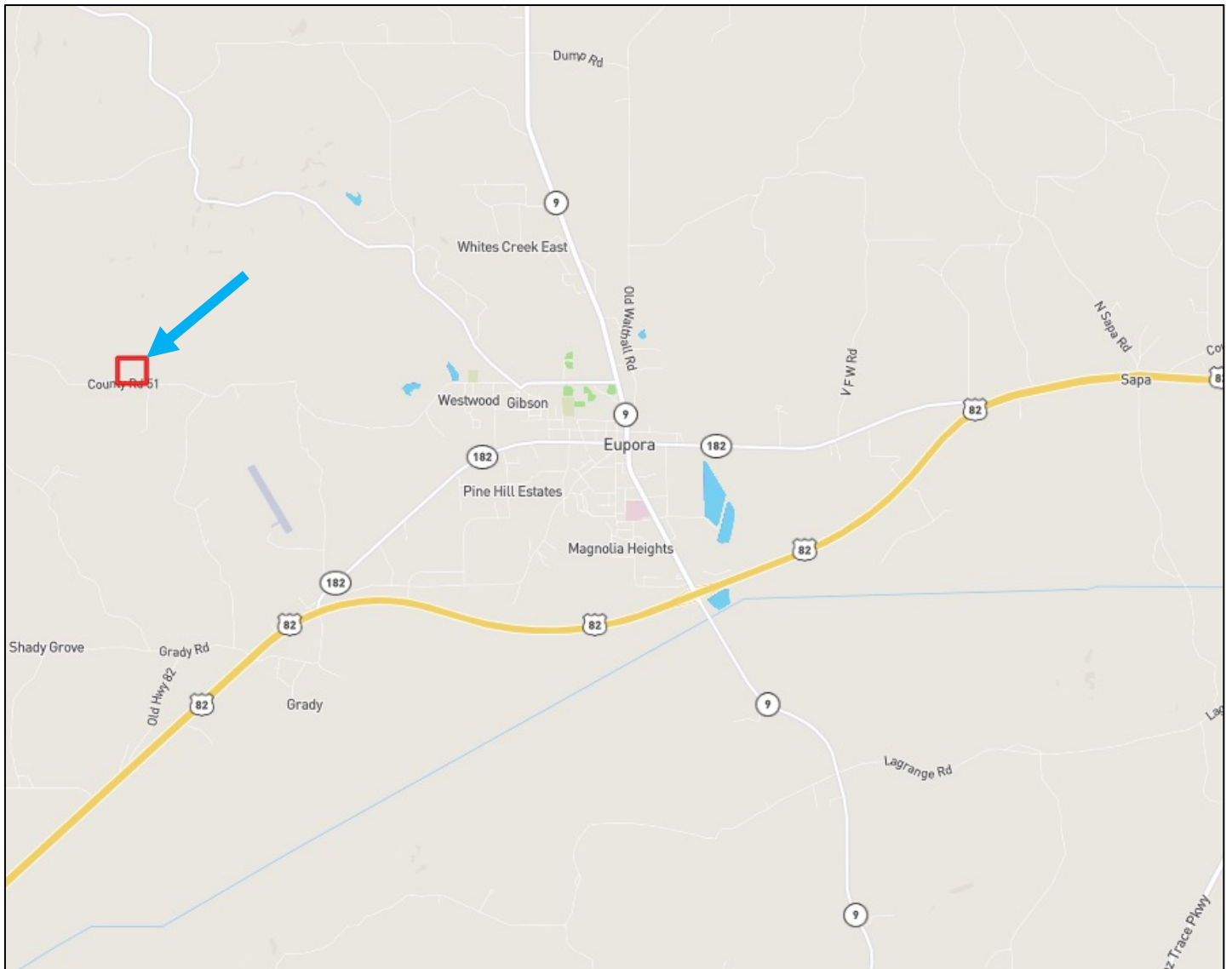
MICHAEL COOPER, REALTOR®
MCooper@TomSmithLand.com
662.268.6333 office | 662.285.8686 cell

TomSmithLandandHomes.com

Information is believed to be accurate but not guaranteed.



Directional Map



Directions from Intersection of Hwy 82 and Hwy 9 in Eupora: Travel NW on Hwy 9 for 1.7 miles. Turn left onto Hall Road and travel 0.7 Miles. Turn right onto MLK Drive and travel 315 feet. Turn left onto Mount Vernon Road and travel 3. miles. The property will be on your right. [GOOGLE MAP](#)



HARPER DAY, REALTOR®
Harper@TomSmithLand.com
662.268.6333 office | 662.694.9751 cell



Expect More. Get More.

Call us today!



MICHAEL COOPER, REALTOR®
MCooper@TomSmithLand.com
662.268.6333 office | 662.285.8686 cell

TomSmithLandandHomes.com

Information is believed to be accurate but not guaranteed.

