

37.5 ± Acres Tallahatchie County, MS



\$115,000



Tallahatchie County, MS



Box stand overlooking
food plot

Check out this 20 + year old CRP tract located right off Hwy 49 in Tallahatchie County near Tutwiler, MS. It has an easement from the highway on the North end along the west side of the property line. This CRP is thick with tons of bedding areas and has plenty of vegetation for the wildlife. The 2+/- AC existing food plot has been worked and ready for planting! The property has utilities available located along side Hwy 49.

*Call me
today!*

ANTHONY STEEN, REALTOR®
Anthony@TomSmithLand.com
662.441.2500 office | 662.645.5151 cell



TomSmithLandandHomes.com

Information is believed to be accurate but not guaranteed.



Call me today!

ANTHONY STEEN, REALTOR®
 Anthony@TomSmithLand.com
 662.441.2500 **office** | 662.645.5151 **cell**



TomSmithLandandHomes.com

Information is believed to be accurate but not guaranteed.



Call me today!

ANTHONY STEEN, REALTOR®
 Anthony@TomSmithLand.com
 662.441.2500 **office** | 662.645.5151 **cell**



TomSmithLandandHomes.com

Information is believed to be accurate but not guaranteed.

Aerial Map



[Map Link](#)

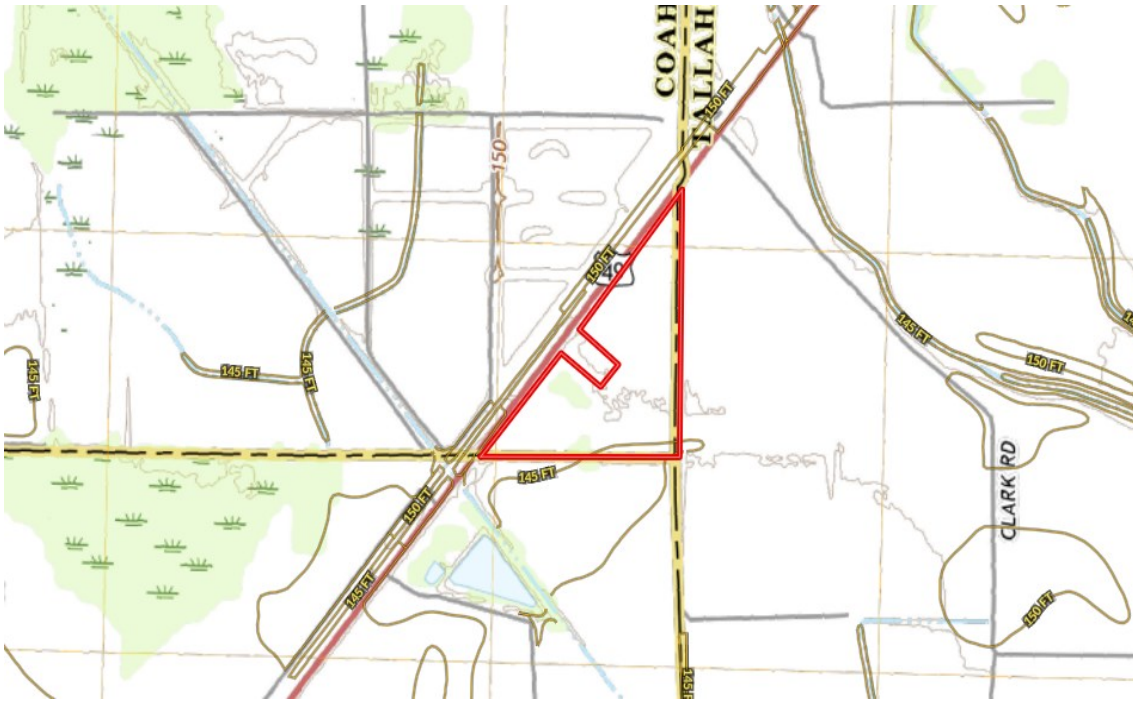
Call me today!

ANTHONY STEEN, REALTOR®
Anthony@TomSmithLand.com
662.441.2500 **office** | 662.645.5151 **cell**

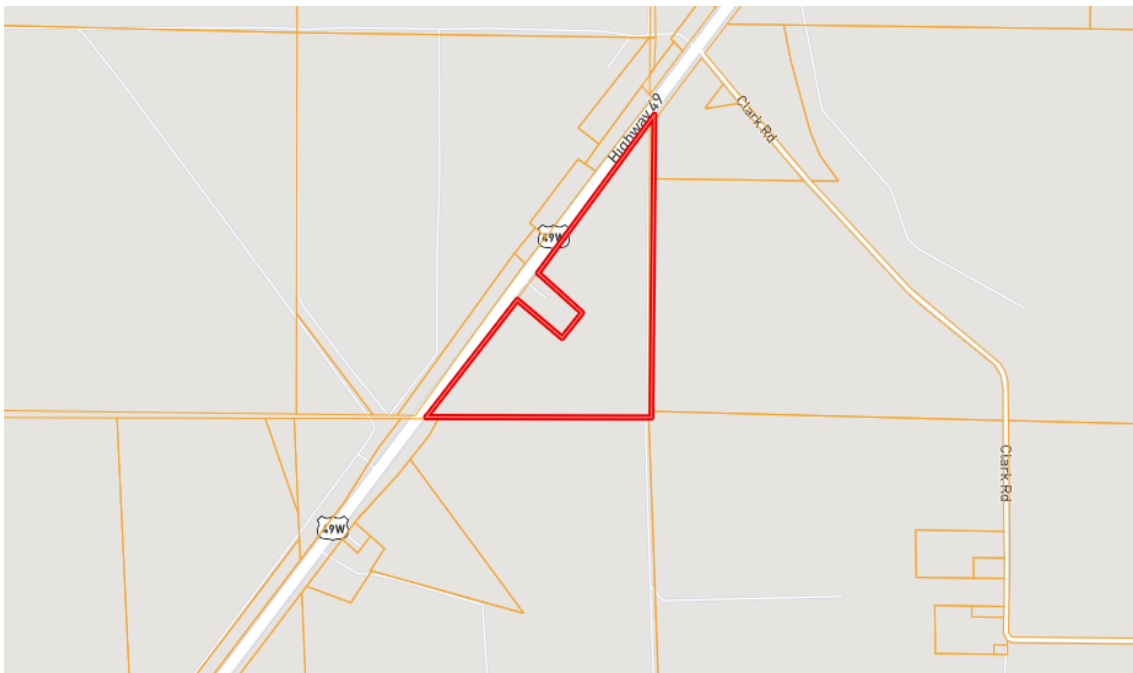


TomSmithLandandHomes.com

Information is believed to be accurate but not guaranteed.



Topo Map



Ownership
Map

Call me today!

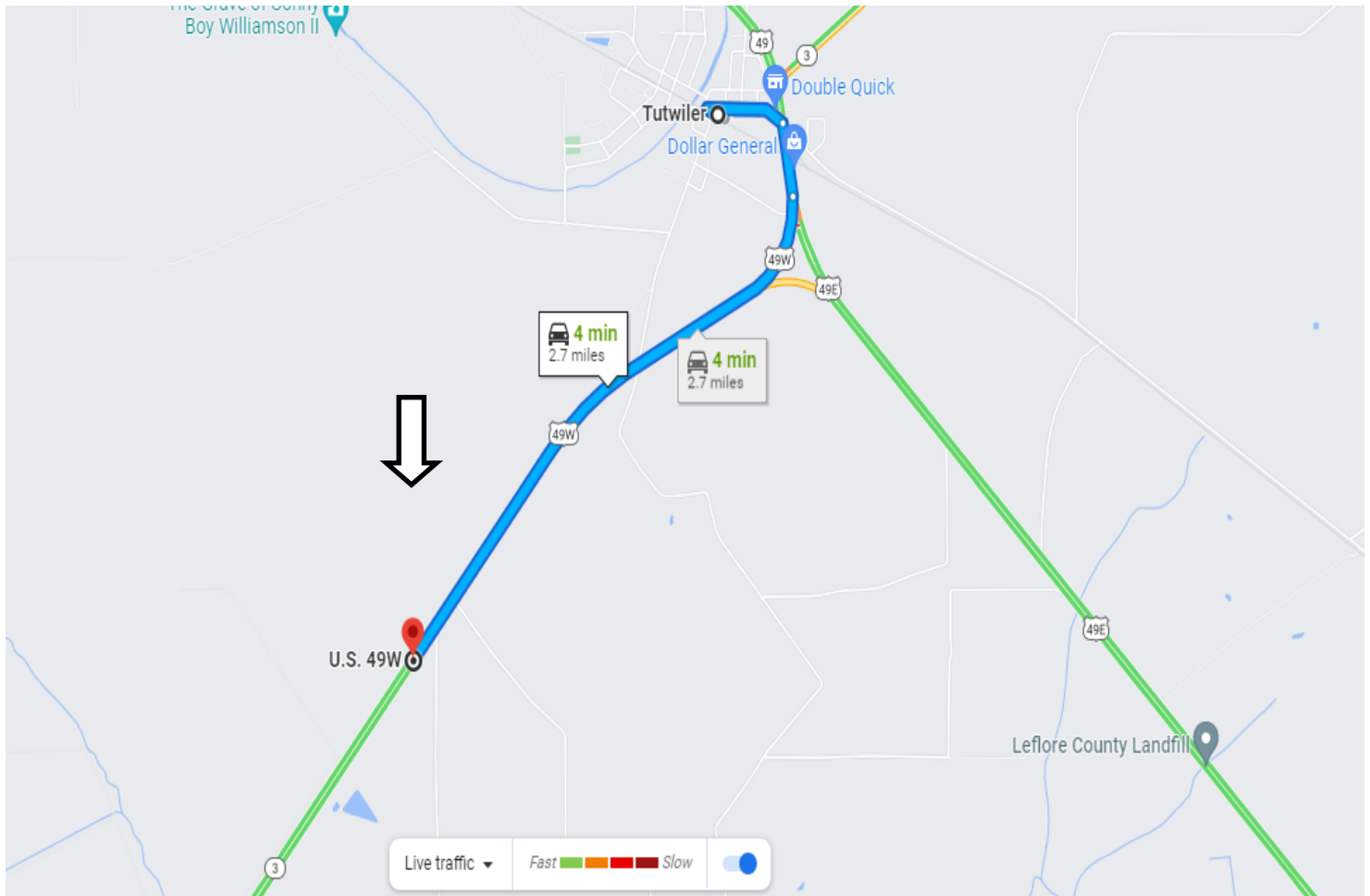
ANTHONY STEEN, REALTOR®
 Anthony@TomSmithLand.com
 662.441.2500 **office** | 662.645.5151 **cell**



TomSmithLandandHomes.com

Information is believed to be accurate but not guaranteed.

Directional Map



Directions from Tutwiler, MS: Leaving Tutwiler, MS head south on Hwy 49E and take a slight right turn onto US-49 W S for 2.3 miles. Turn left into the property.

[Google Map Link](#)

Call me today!

ANTHONY STEEN, REALTOR®
Anthony@TomSmithLand.com
662.441.2500 **office** | 662.645.5151 **cell**



TomSmithLandandHomes.com

Information is believed to be accurate but not guaranteed.