

7 Residential Lots in Hancock County, MS



What a wonderful opportunity! If you are looking for an investment or somewhere to build for yourself, look no further! Seven available lots on Lark Street in Bay St. Louis located in Hancock County, MS. The lots range in size from .18+/- acres to .53+/- acre, comprise over 2.3+/- acres of total area, and provide a wealth of opportunity for development. Located just minutes from Highway 90, you have the solitude of a quiet secluded street and the convenience of being just three miles from Waveland and Bay St. Louis. The beautiful white beaches of Waveland and the Gulf of Mexico await you! Do not miss out on this chance to invest in the future of Bay St. Louis, MS. There are minimum building heights, and some restrictions may apply. Contact Clif Cannon to learn more.

Directions from the intersection of Interstate 10 and MS-603 South in Bay St. Louis, MS: Travel south on MS-603 for 3 miles. Turn right onto Tigris St and travel for .3 miles. Turn right onto Tombigbee St and travel for .1 miles. Turn left onto River St and travel for .3 miles. This will become Trout St. continue straight for 1 mile. Turn left onto Harbor Drive for .1 miles. Turn left onto Lark St and travel 600ft. The property will be on the right.



[Google Maps](#)

Call me today!

CLIF CANNON, REALTOR®
Clif@TomSmithLand.com
601.990.5070 office | 601.565.1070 cell



TomSmithLandandHomes.com

Information is believed to be accurate but not guaranteed.



Call me today!

CLIF CANNON, REALTOR®

Clif@TomSmithLand.com

601.990.5070 **office** | 601.565.1070 **cell**



Expect More. Get More.

TomSmithLandandHomes.com

Information is believed to be accurate but not guaranteed.



Call me today!

CLIF CANNON, REALTOR®

Clif@TomSmithLand.com

601.990.5070 **office** | 601.565.1070 **cell**



Expect More. Get More.

TomSmithLandandHomes.com

Information is believed to be accurate but not guaranteed.

Aerial Map



[Interactive Map](#)

Call me today!

CLIF CANNON, REALTOR®

Clif@TomSmithLand.com

601.990.5070 **office** | 601.565.1070 **cell**



Expect More. Get More.

TomSmithLandandHomes.com

Information is believed to be accurate but not guaranteed.

Topographic Map



Call me today!

CLIF CANNON, REALTOR®

Clif@TomSmithLand.com

601.990.5070 **office** | 601.565.1070 **cell**

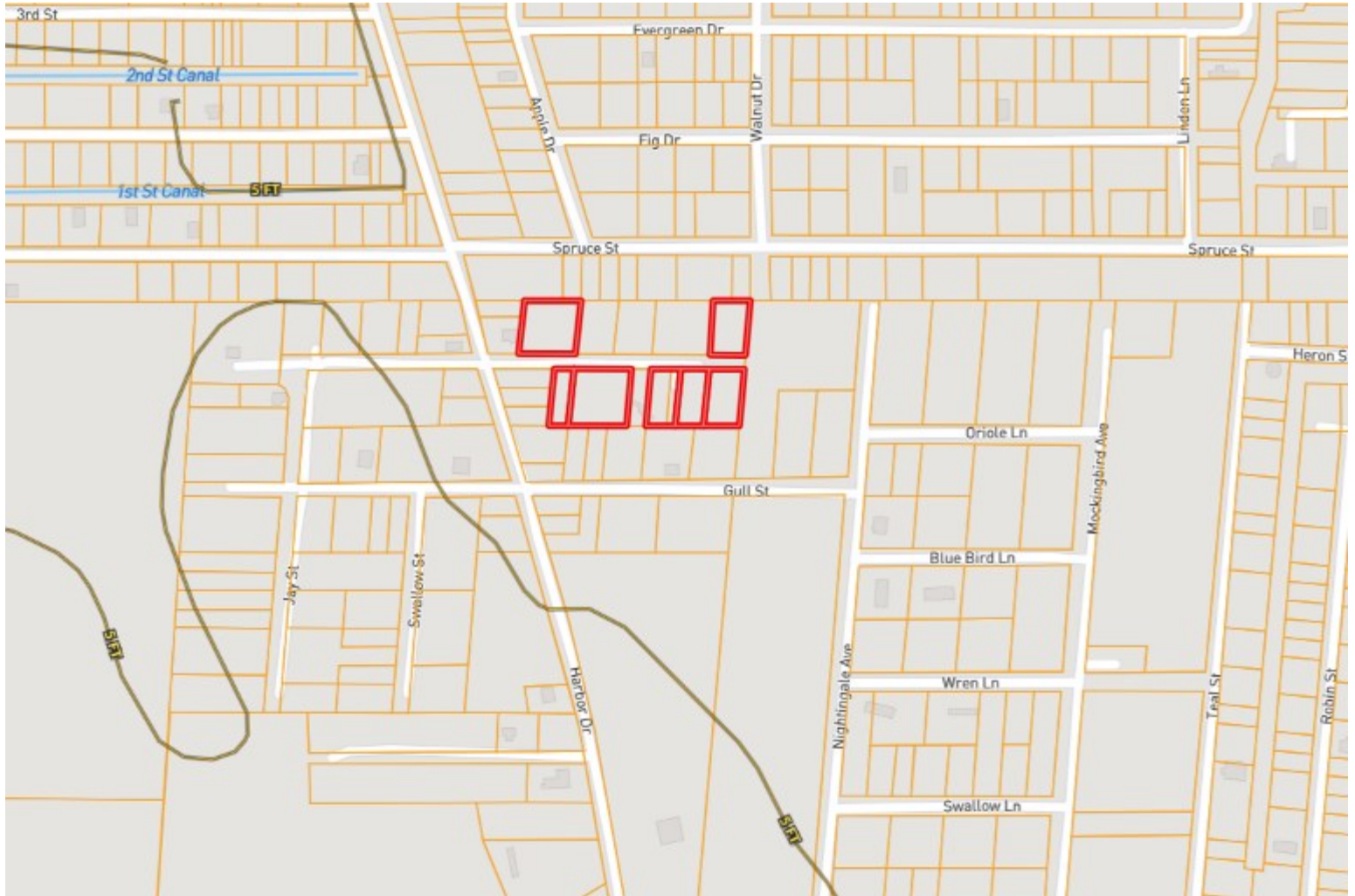


Expect More. Get More.

TomSmithLandandHomes.com

Information is believed to be accurate but not guaranteed.

Ownership Map



Call me today!

CLIF CANNON, REALTOR®
Clif@TomSmithLand.com
601.990.5070 **office** | 601.565.1070 **cell**

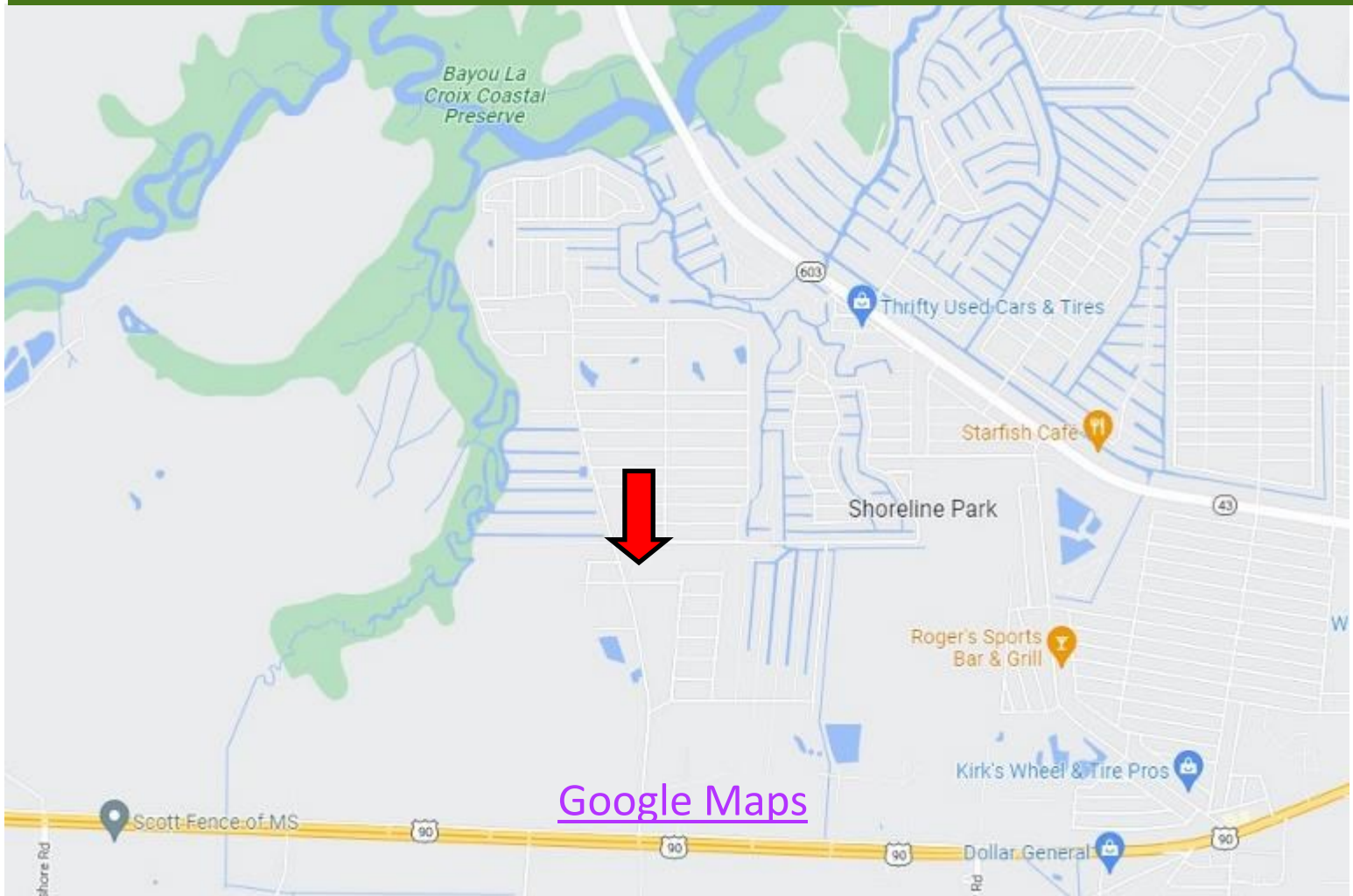


Expect More. Get More.

TomSmithLandandHomes.com

Information is believed to be accurate but not guaranteed.

Directional Map



Directions from the intersection of Interstate 10 and MS-603 South in Bay St. Louis, MS: Travel south on MS-603 for 3 miles. Turn right onto Tigris St and travel for .3 miles. Turn right onto Tombigbee St and travel for .1 miles. Turn left onto River St and travel for .3 miles. This will become Trout St. continue straight for 1 mile. Turn left onto Harbor Drive for .1 miles. Turn left onto Lark St and travel 600ft. The property will be on the right.

6013 Lark Street
Bay St. Louis, MS 39520

Call me today!

CLIF CANNON, REALTOR®
Clif@TomSmithLand.com
601.990.5070 **office** | 601.565.1070 **cell**



TomSmithLandandHomes.com

Information is believed to be accurate but not guaranteed.