

Home on .59+/- Acres Lowndes County, MS

\$260,000



Are you looking for a nice home in a good neighborhood? If so, look no further. Here is an 1827 sq. ft., three bed, two bath house in Lowndes County, MS in the Caledonia School District that sits on .59+/- acres. This house was built in 1980 and has recently been remodeled. This house features granite counter tops, a gas fireplace, a sunroom, two car carport, and a 24x24 foot shop! The main bedroom and bathroom have also been updated with hardwood floors and a walk-in shower with a waterfall shower head! Call Walker to schedule your private tour!

Directions from Caledonia Highschool: Leave Caledonia High School, travel south for 82 ft, and turn onto Fred Darnell Lane. After that, in .2 miles, turn right onto Wolfe Road. The house will be on your right in 2.5 miles.



Call me today!

WALKER TRANUM, REALTOR®
Walker@TomSmithHomes.com
662.268.6333 **office** | 662.769.1442 **cell**



TomSmithLandandHomes.com

Information is believed to be accurate but not guaranteed



Call me today!

WALKER TRANUM, REALTOR®
Walker@TomSmithHomes.com
662.268.6333 office | 662.769.1442 cell



TomSmithLandandHomes.com

Information is believed to be accurate but not guaranteed.



Call me today!

WALKER TRANUM, REALTOR®
 Walker@TomSmithHomes.com
 662.268.6333 office | 662.769.1442 cell



TomSmithLandandHomes.com

Information is believed to be accurate but not guaranteed.



Call me today!

WALKER TRANUM, REALTOR®
Walker@TomSmithHomes.com
662.268.6333 office | 662.769.1442 cell



TomSmithLandandHomes.com

Information is believed to be accurate but not guaranteed.





Call me today!

WALKER TRANUM, REALTOR®
 Walker@TomSmithHomes.com
 662.268.6333 office | 662.769.1442 cell



TomSmithLandandHomes.com

Information is believed to be accurate but not guaranteed.

LandReport
 2011-2022
 AMERICA'S
BEST
 BROKERAGES

Aerial Map



Call me today!

WALKER TRANUM, REALTOR®
Walker@TomSmithHomes.com
662.268.6333 office | 662.769.1442 cell



TomSmithLandandHomes.com

Information is believed to be accurate but not guaranteed.

Flood Map



Call me today!

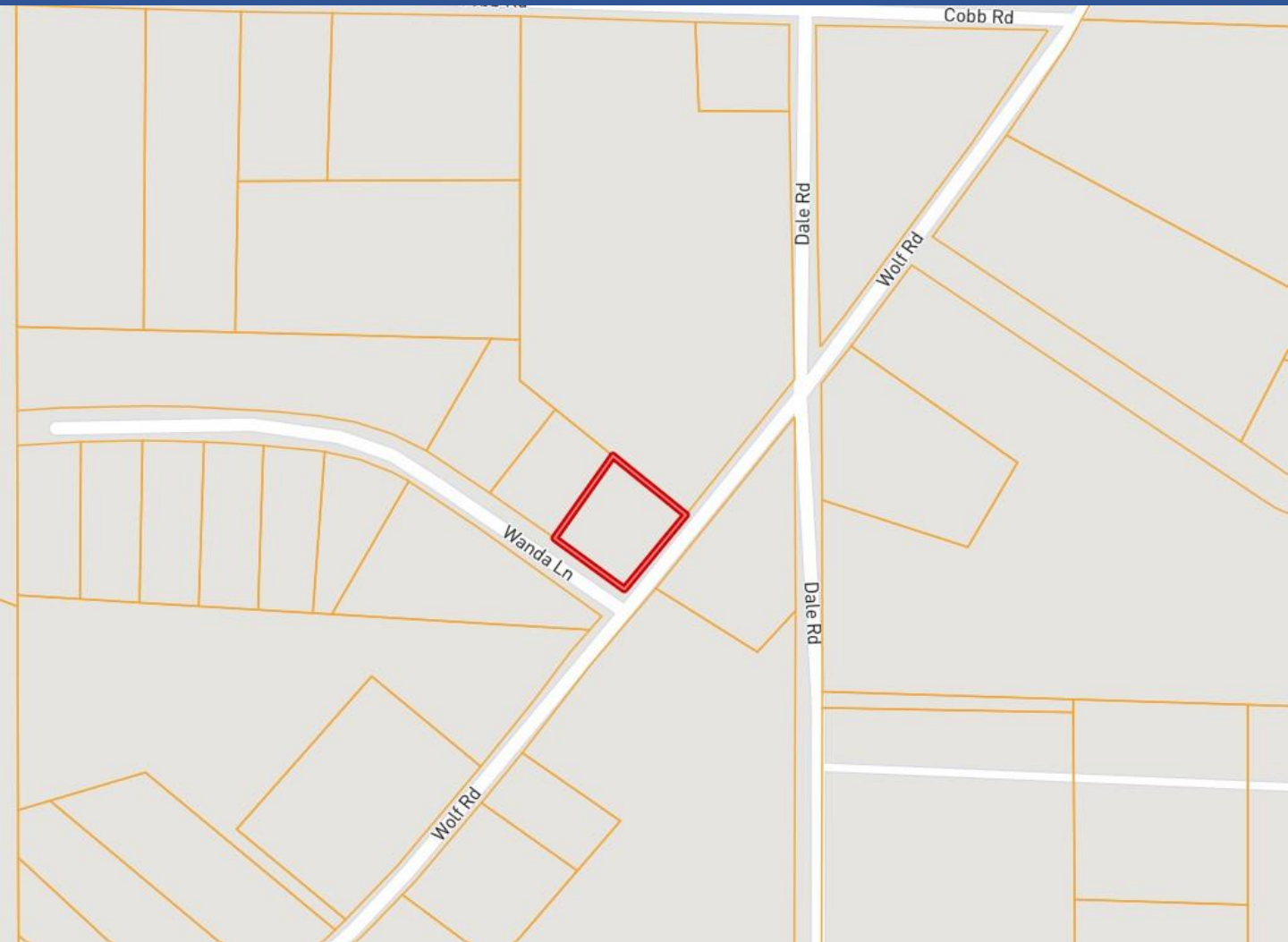
WALKER TRANUM, REALTOR®
Walker@TomSmithHomes.com
662.268.6333 office | 662.769.1442 cell



TomSmithLandandHomes.com

Information is believed to be accurate but not guaranteed.

Ownership Map



Call me today!

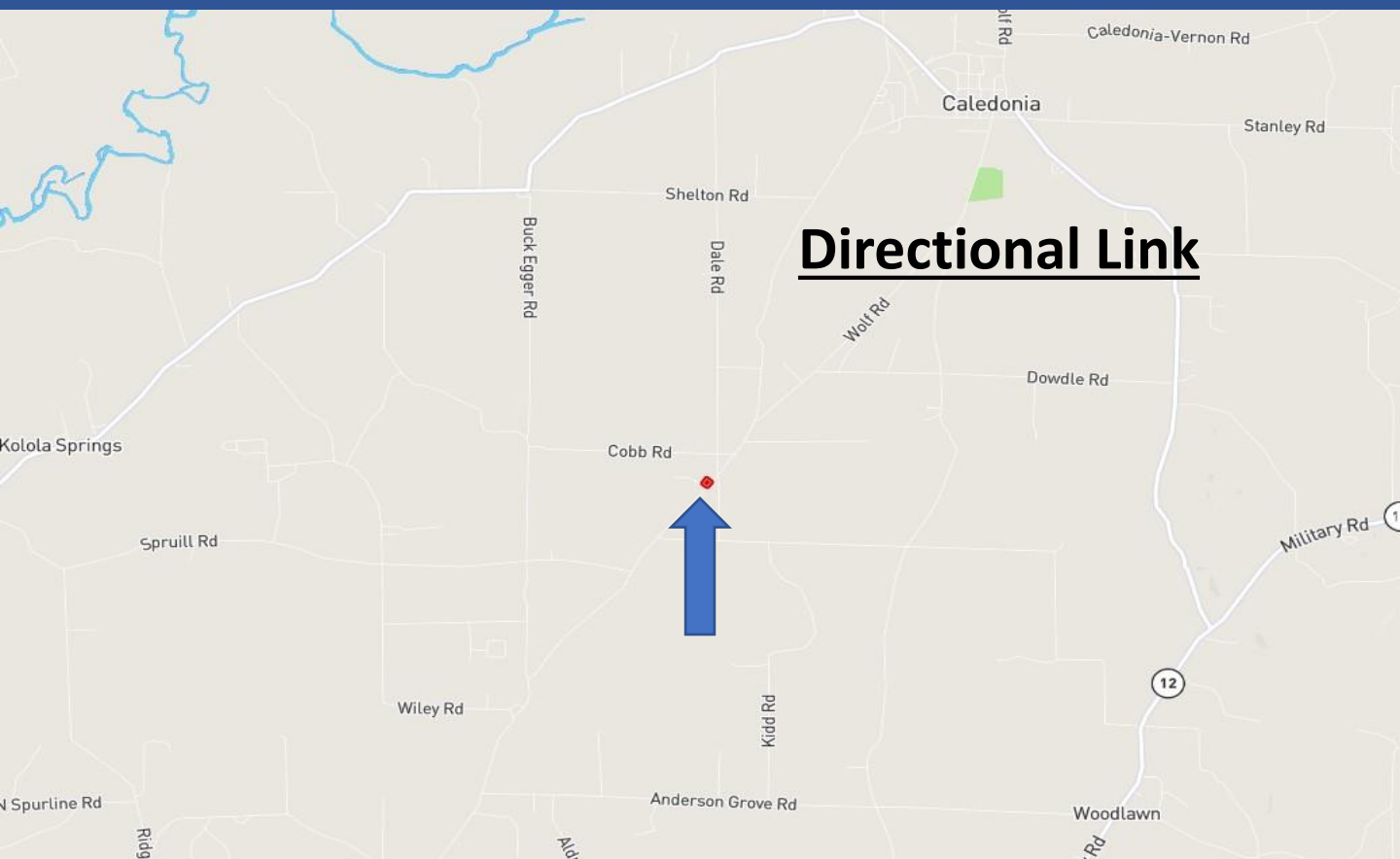
WALKER TRANUM, REALTOR®
Walker@TomSmithHomes.com
662.268.6333 **office** | 662.769.1442 **cell**



TomSmithLandandHomes.com

Information is believed to be accurate but not guaranteed.

Directional Map



Directions from Caledonia Highschool: Leave Caledonia High School and head south for 82 ft and turn onto Fred Darnell Lane. After that in .2 miles turn right onto Wolfe Road. The house will be on your right in 2.5 miles.



Call me today!

WALKER TRANUM, REALTOR®
Walker@TomSmithHomes.com
662.268.6333 office | 662.769.1442 cell



TomSmithLandandHomes.com

Information is believed to be accurate but not guaranteed.