

1± Acre Lot in Grenada County, MS

\$20,000



Having you been looking for a location to build your dream home? Welcome to your new homesite location, situated just minutes 15 minutes west of Grenada Lake! This 1± acre lot in Grenada County, MS, is right outside the city limits and features a 23x47 slab foundation, paved road frontage, and utilities are available from the road. Water is provided through Poor House Water Association. Call Kadero Edley today for your private showing!

[Google Maps Link](#)



Call me today!

KADERO EDLEY, REALTOR®
Kadero@TomSmithLand.com
601.898.2772 **office** | 601.488.7000 **cell**



Expect More. Get More.

TomSmithLandandHomes.com

Information is believed to be accurate but not guaranteed.



Call me today!



KADERO EDLEY, REALTOR®
 Kadero@TomSmithLand.com
 601.898.2772 **office** | 601.488.7000 **cell**



TomSmithLandandHomes.com

Information is believed to be accurate but not guaranteed.



Aerial Map

[Click here for Interactive Map](#)

*Call me
today!*

KADERO EDLEY, REALTOR®

Kadero@TomSmithLand.com

601.898.2772 **office** | 601.488.7000 **cell**

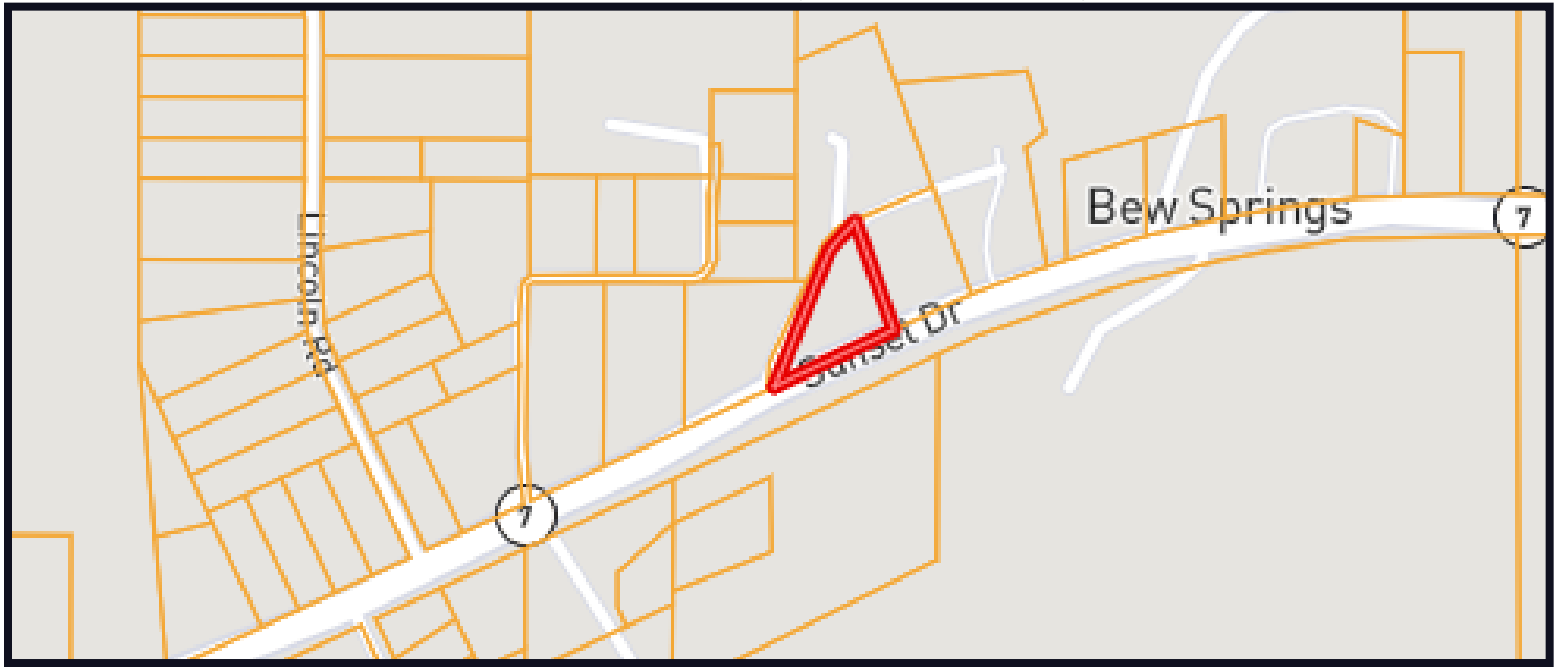


Expect More. Get More.

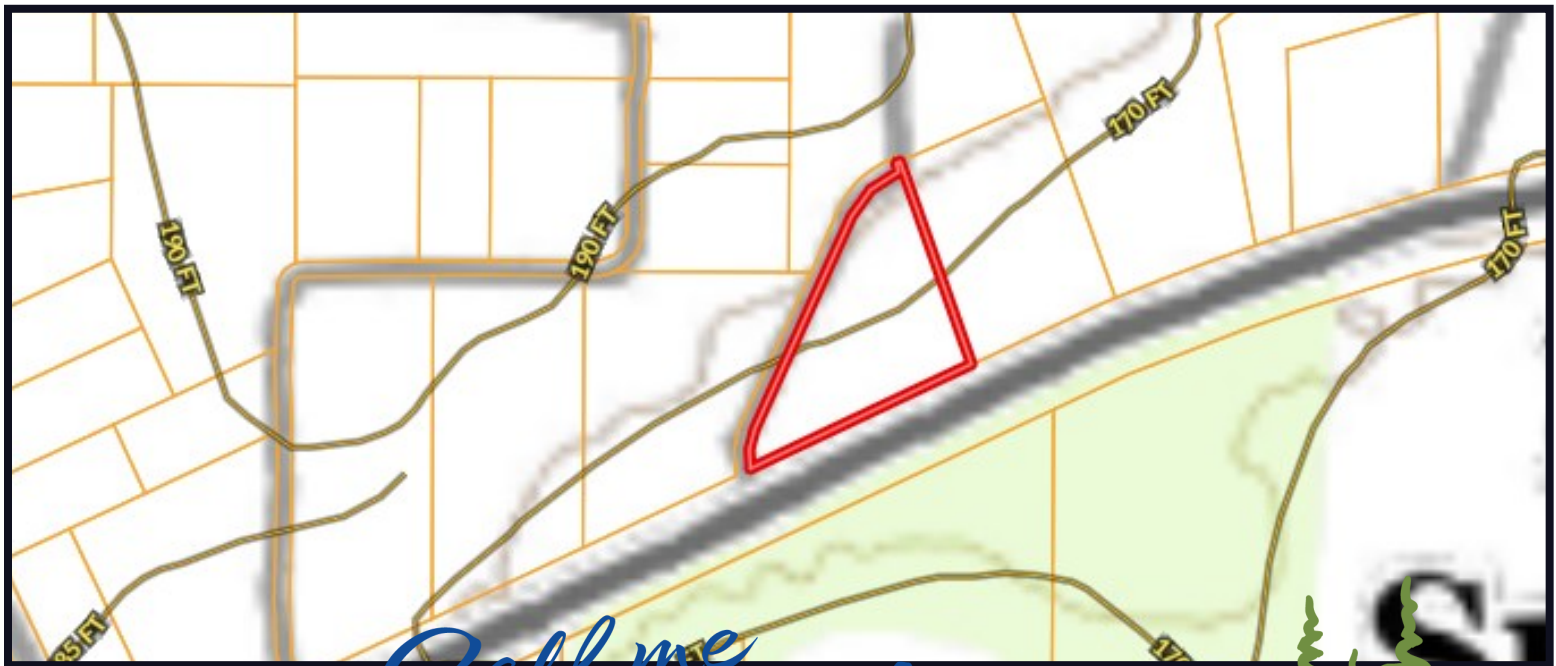
TomSmithLandandHomes.com

Information is believed to be accurate but not guaranteed.

Ownership Map



Topo Map



Call me today!



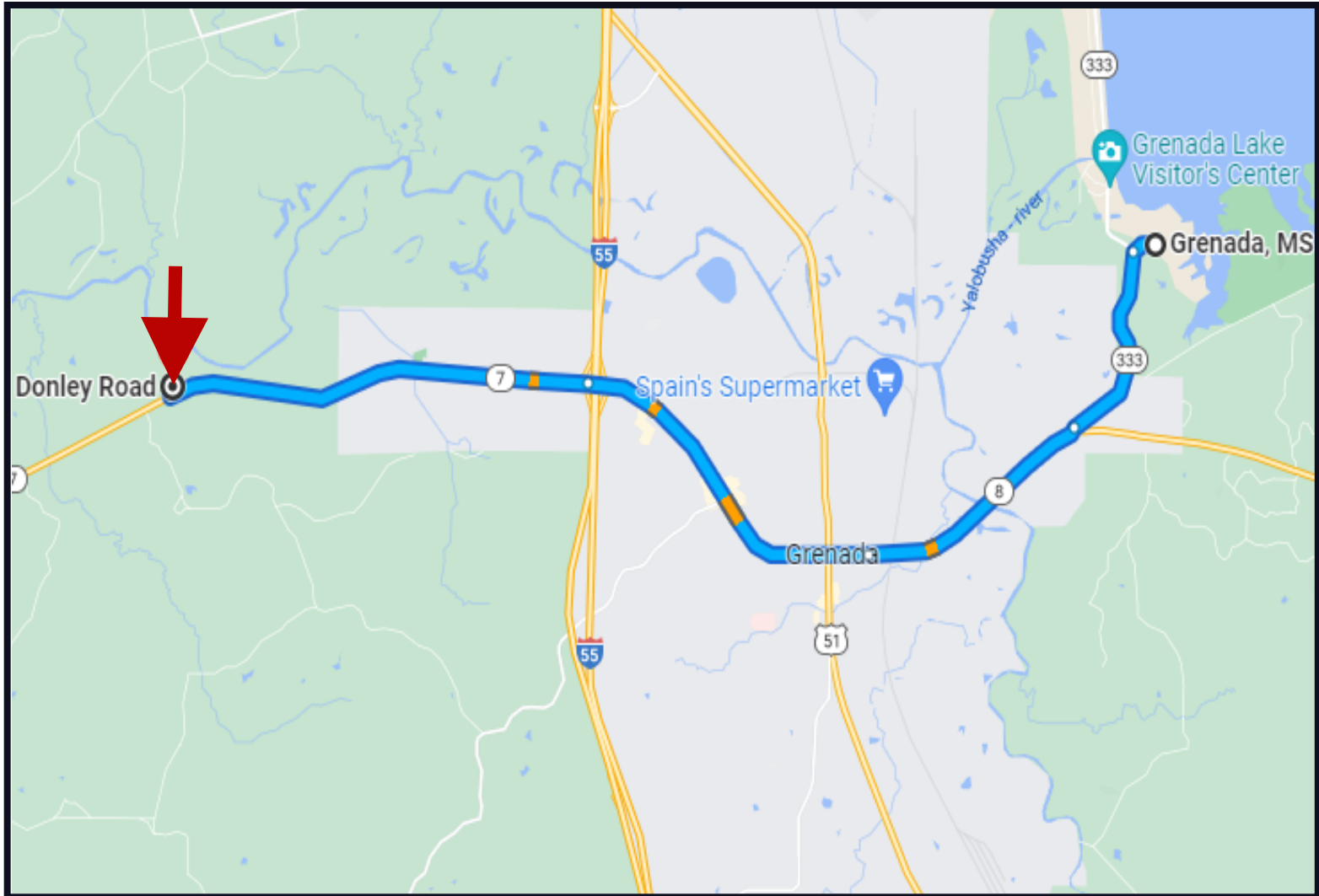
KADERO EDLEY, REALTOR®
Kadero@TomSmithLand.com
601.898.2772 **office** | 601.488.7000 **cell**



Expect More. Get More.

TomSmithLandandHomes.com

Information is believed to be accurate but not guaranteed.



Directional Map

Direction from MS-7 Hwy 8 E in Grenada, MS: Travel west toward FFA Camp and travel 0.2 miles. Turn left onto MS-333 and travel 1.5 miles. Turn right onto Lakeway Drive and travel 1.9 miles. Continue onto Sunset Drive toward Hwy 8 W and travel 6 miles. Turn right and property will be on your right.

[Google Maps Link](#)

Call me today!

KADERO EDLEY, REALTOR®
 Kadero@TomSmithLand.com
 601.898.2772 **office** | 601.488.7000 **cell**



TomSmithLandandHomes.com

Information is believed to be accurate but not guaranteed.