

# HUNTER'S PARADISE

103 +/- ac in Quitman County MS

## \$299,500

This 103 +/- ac tract is located just outside of Marks, MS in Quitman County. The tract consists of 25-30 year old CRP full of acorns to give the deer and ducks plenty of food. There are 4-5 food plots established for deer and 2 spots that could be converted into duck holes. This diverse tract features a frontage road with utilities on the east end of the property, making it the perfect spot to build your dream campsite! The north and south property lines join cropland that give the wildlife plenty of nutrition; while the west joins a 300 +/- ac tract surrounded by a few thousand acres of thick hunting land. If you're looking for your very own weekend hunting paradise look no further!



*Call me today!*

**ANTHONY STEEN, REALTOR®**  
Anthony@TomSmithLand.com  
662.441.2500 **office** | 662.645.5151 **cell**



## TomSmithLandandHomes.com

Information is believed to be accurate but not guaranteed.





*Call me today!*

**ANTHONY STEEN**, REALTOR®  
 Anthony@TomSmithLand.com  
 662.441.2500 **office** | 662.645.5151 **cell**



**TomSmithLandandHomes.com**

Information is believed to be accurate but not guaranteed.





*Call me today!*

**ANTHONY STEEN**, REALTOR®  
 Anthony@TomSmithLand.com  
 662.441.2500 **office** | 662.645.5151 **cell**

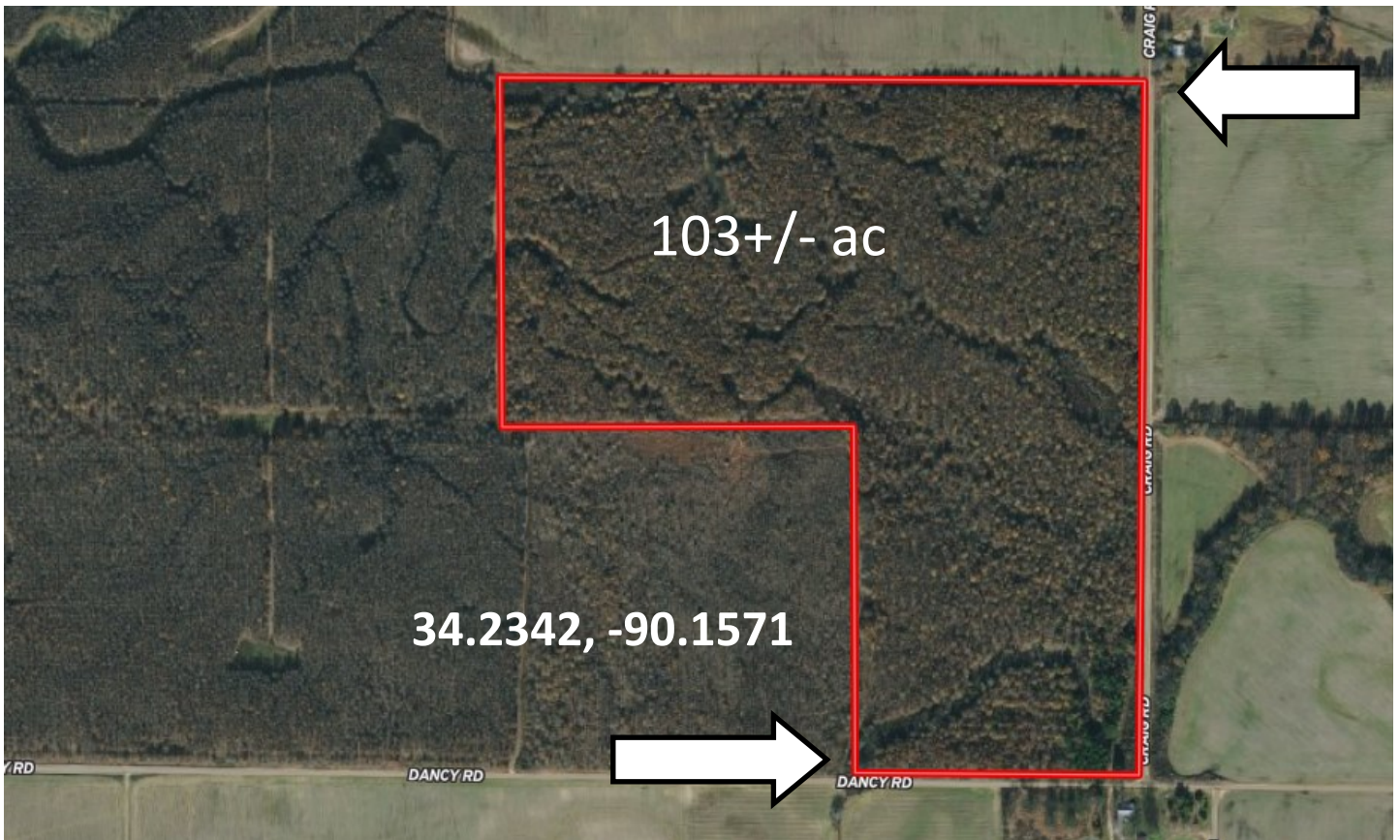


**TomSmithLandandHomes.com**

Information is believed to be accurate but not guaranteed.



# Aerial Map



[Map Link](#)

*Call me today!*

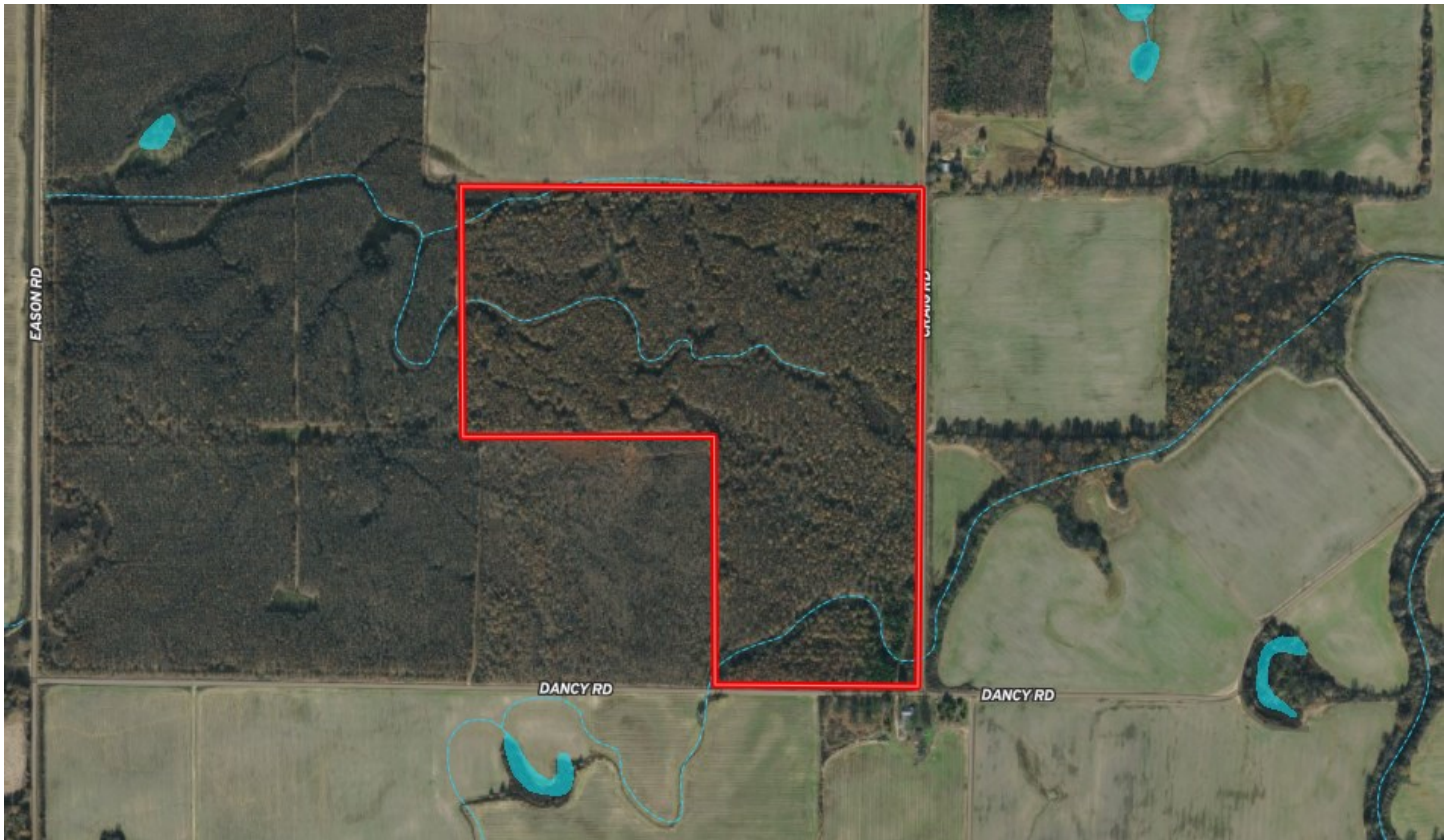
**ANTHONY STEEN**, REALTOR®  
Anthony@TomSmithLand.com  
662.441.2500 **office** | 662.645.5151 **cell**



**TomSmithLandandHomes.com**

Information is believed to be accurate but not guaranteed.

# Aerial Map with Water Features



*Call me today!*

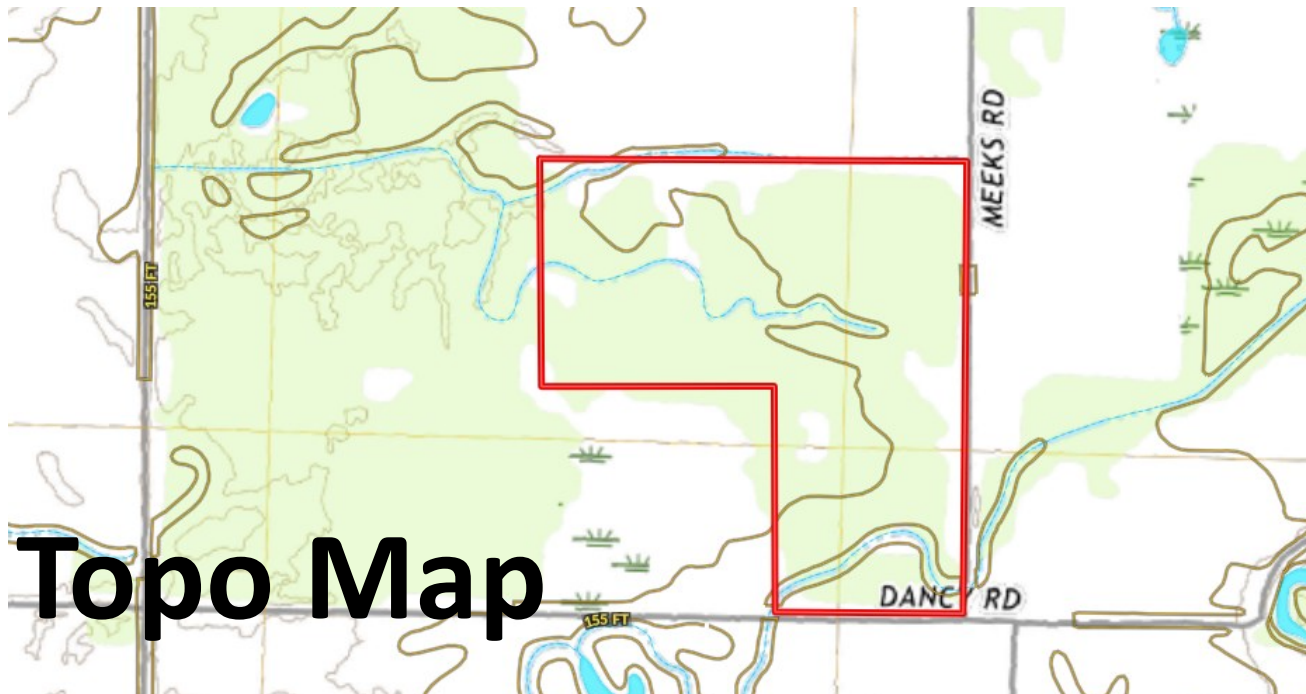
**ANTHONY STEEN**, REALTOR®  
Anthony@TomSmithLand.com  
662.441.2500 **office** | 662.645.5151 **cell**



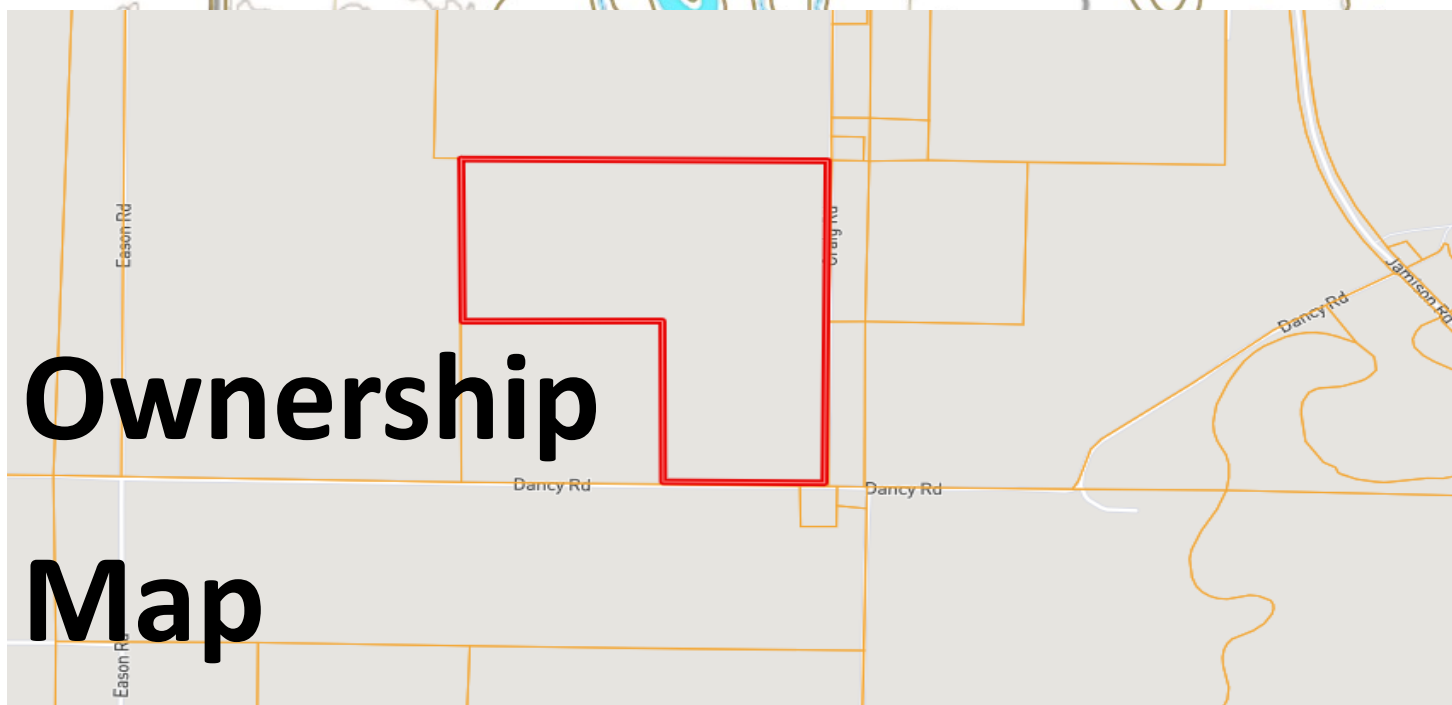
**TomSmithLandandHomes.com**

Information is believed to be accurate but not guaranteed.





# Topo Map



# Ownership Map

*Call me today!*

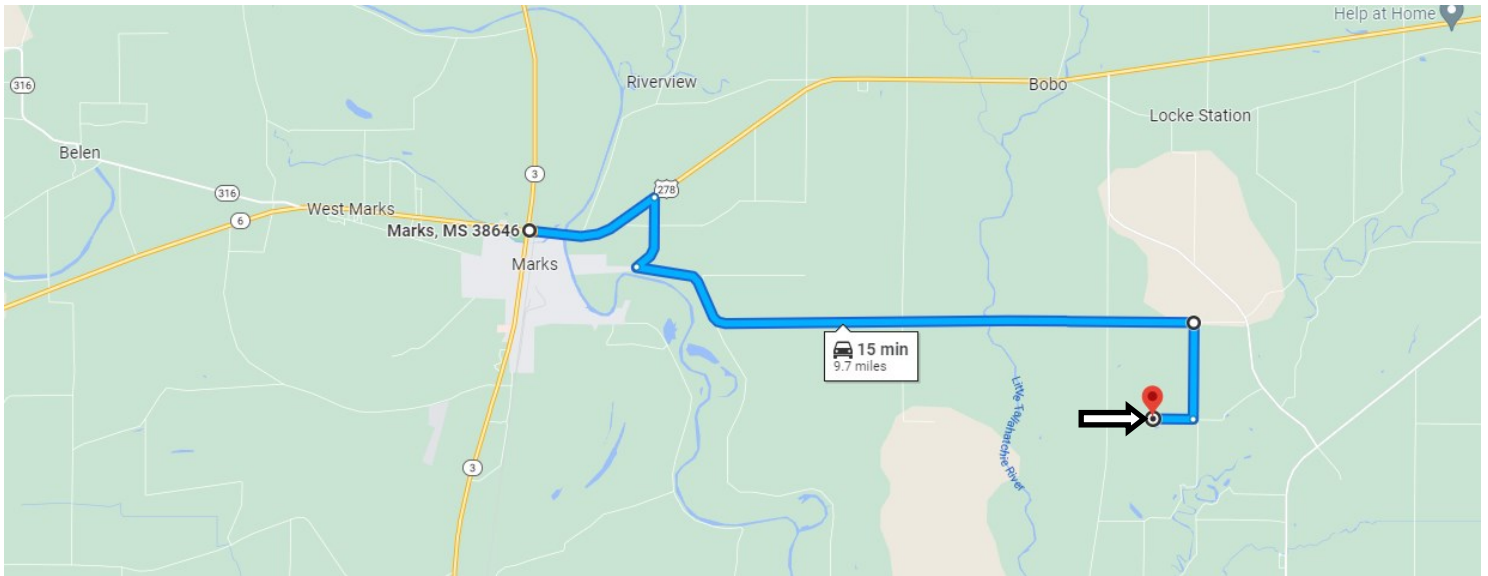
**ANTHONY STEEN, REALTOR®**  
 Anthony@TomSmithLand.com  
 662.441.2500 **office** | 662.645.5151 **cell**



**TomSmithLandandHomes.com**

Information is believed to be accurate but not guaranteed.

# Directional Map



**Directions from Marks, MS:** Head east on US-278 E toward Hwy 3 N for 1.5 Miles. Turn right onto Tower Road and travel .8 miles. Turn left onto Hood road and travel 6 miles. Turn right onto Craig road for 1 mile. In 272 feet, turn right onto Dancy Road. Travel .4 miles and turn right into the property.

[Google Map Link](#)

*Call me today!*

**ANTHONY STEEN**, REALTOR®  
Anthony@TomSmithLand.com  
662.441.2500 **office** | 662.645.5151 **cell**



**TomSmithLandandHomes.com**

Information is believed to be accurate but not guaranteed.