

COMMERCIAL BUILDING ON 1.4 +/- ACRES WINSTON COUNTY, MS



305 Vance St. Louisville, MS 39339

Are you looking for a location for a new business in Winston County, MS? Look at this 2,500 square foot office space on 1.4+/- acres within the City of Louisville, only four blocks from Main Street and less than two miles from the Hwy 15/Hwy 25 Bypass around Louisville. Located across the street from Louisville Middle School and directly across from the track field. The property is zoned Commercial, and the current floor plan lends itself to flexibility. However, it has been recently vacated and is ready for the new owner to tweak it to meet their needs. The property features a front entrance to the office area with two restrooms, a metal roof, and a concrete parking lot with an additional grass covered area adjacent to the building. A double wide side door opens to a storage or warehouse area in the rear. But don't wait long. Call Michael Halfacre for your private viewing today!

Directions from the intersection of MS-15 N/MS-25 N & Old Robinson Road in Louisville, MS:

Travel east on Old Robinson Road for .1 mile and then turn right (east) on Vance Street. Travel 1.0 mile: Property is on the right marked with a sign.



Call me today!

MICHAEL HALFACRE, MANAGING BROKER
MHalfacre@TomSmithLand.com
662.268.6333 **office** | 662.242.4220 **cell**



TomSmithLandandHomes.com

Information is believed to be accurate but not guaranteed.



Call me today!

MICHAEL HALFACRE, MANAGING BROKER
 MHalfacre@TomSmithLand.com
 662.268.6333 office | 662.242.4220 cell



TomSmithLandandHomes.com

Information is believed to be accurate but not guaranteed.



Call me today!

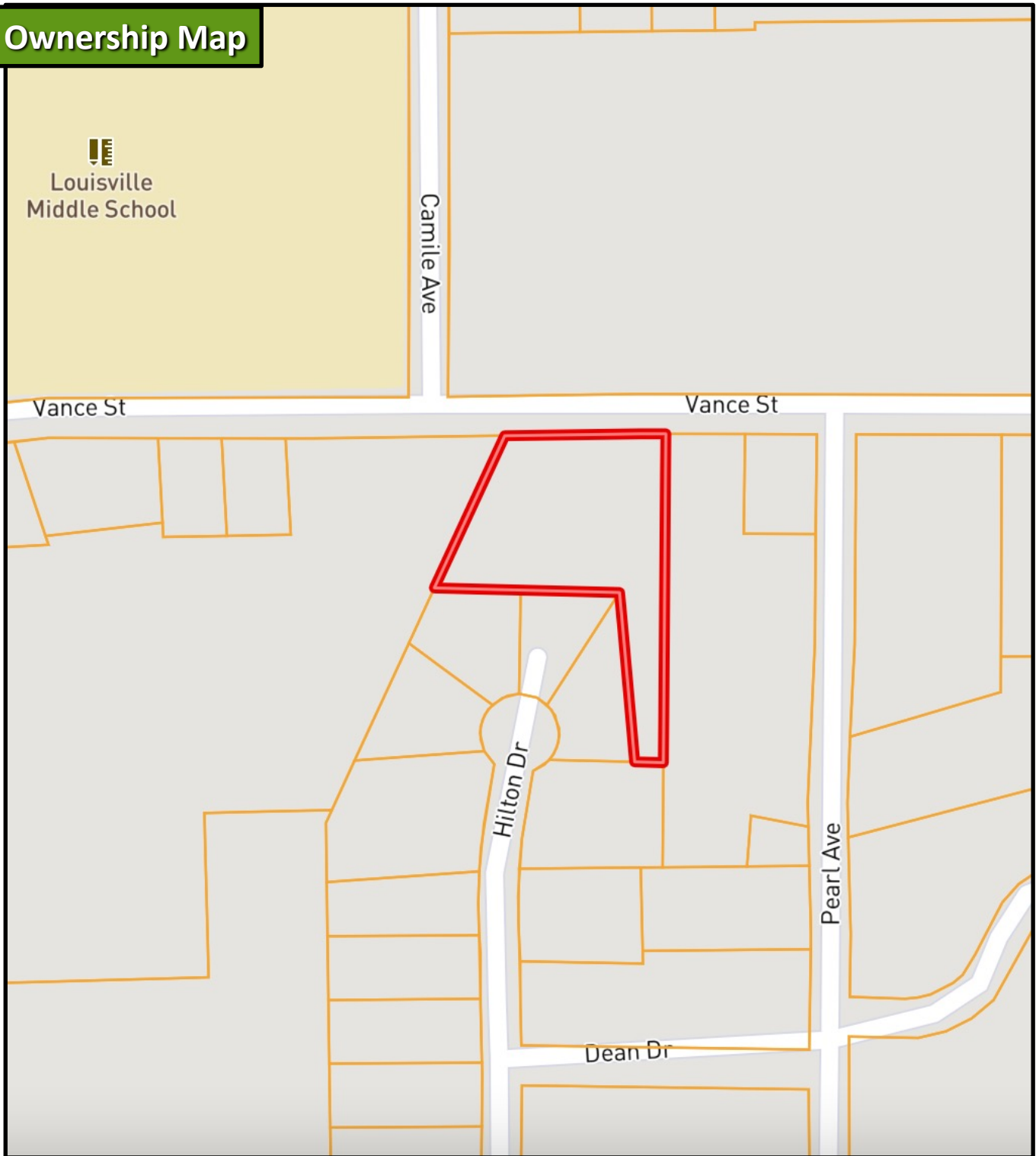
MICHAEL HALFACRE, MANAGING BROKER
 MHalfacre@TomSmithLand.com
 662.268.6333 **office** | 662.242.4220 **cell**



TomSmithLandandHomes.com

Information is believed to be accurate but not guaranteed.

Ownership Map



Call me today!

MICHAEL HALFACRE, MANAGING BROKER
MHalfacre@TomSmithLand.com
662.268.6333 **office** | 662.242.4220 **cell**



TomSmithLandandHomes.com

Information is believed to be accurate but not guaranteed.

Aerial Photograph

33.1172, -89.0628

1.4 +/- Acres

[Click for Interactive Map](#)



Call me today!

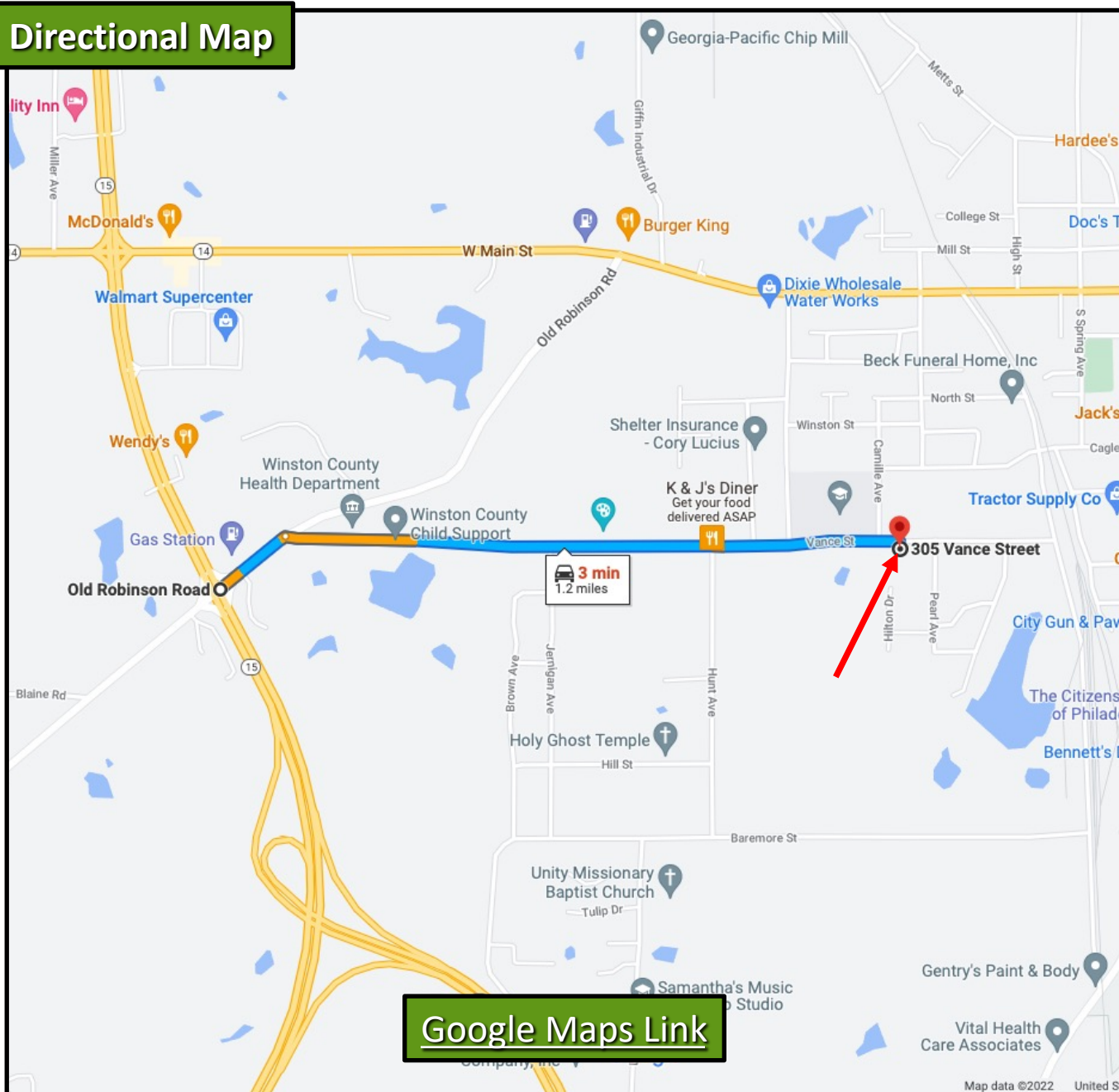
MICHAEL HALFACRE, MANAGING BROKER
MHalfacre@TomSmithLand.com
662.268.6333 **office** | 662.242.4220 **cell**



TomSmithLandandHomes.com

Information is believed to be accurate but not guaranteed.

Directional Map



Directions from the intersection of MS-15 N/MS-25 N & Old Robinson Road in Louisville, MS:

Travel east on Old Robinson Road for .1 mile and then turn right (east) on Vance Street. Travel 1.0 mile: Property is on the right marked with a sign.



Call me today!

MICHAEL HALFACRE, MANAGING BROKER
MHalfacre@TomSmithLand.com
662.268.6333 **office** | 662.242.4220 **cell**



TomSmithLandandHomes.com

Information is believed to be accurate but not guaranteed.