

Recreational Tract Full of Wildlife

44± Acres in Choctaw County, MS



\$101,200

This 44+/- acre tract in Choctaw County, MS is your opportunity to own your very own recreational tract. This tract offer great deer and turkey hunting as well as a slough that would be great for a morning wood duck shoot. This property is a hunters dream. There is approximately 20 acres of pines in the front of the property as well as another 24+/- acres of hard woods. The property is landlocked but the current owner has owned the property since 1996 and has never had any issues accessing the property. There is no water and power available on the property, it is a classic hunting tract, perfect for unplugging and getting in touch with nature. Call Travis Smith today to schedule your private viewing!

[Google Map Link](#)



LandReport
2011-2022
AMERICA'S
BEST
BROKERAGES

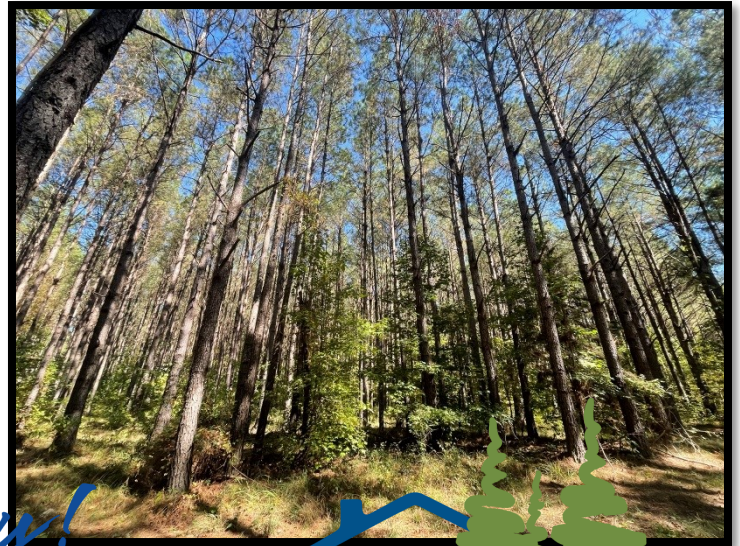
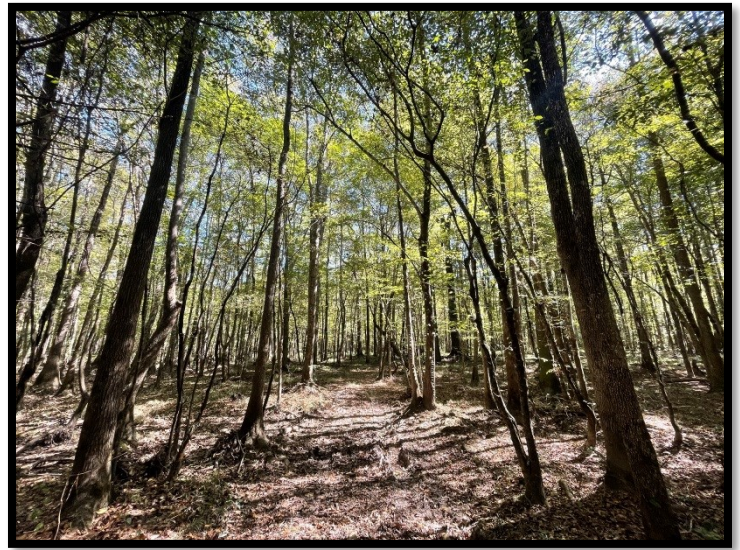
*Call me
today!*

TRAVIS SMITH, REALTOR®
Travis@TomSmithLand.com
601.898.2772 **office** | 601.600.0428 **cell**



TomSmithLandandHomes.com

Information is believed to be accurate but not guaranteed.



Call me today!



TRAVIS SMITH, REALTOR®
Travis@TomSmithLand.com
601.898.2772 office | 601.600.0428 cell



Expect More. Get More.

TomSmithLandandHomes.com

Information is believed to be accurate but not guaranteed.



Call me today!



TRAVIS SMITH, REALTOR®
Travis@TomSmithLand.com
601.898.2772 office | 601.600.0428 cell

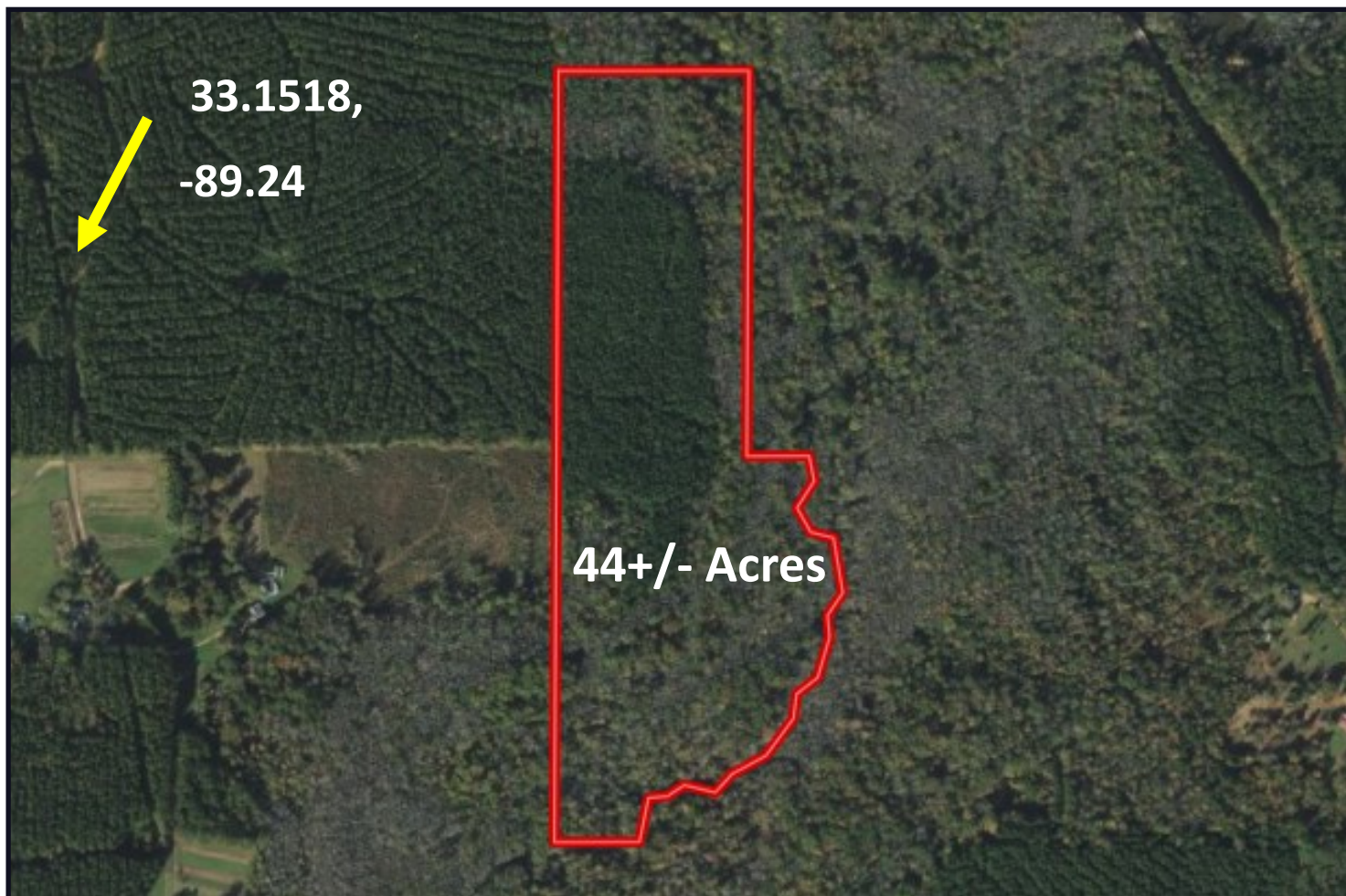


Expect More. Get More.

TomSmithLandandHomes.com

Information is believed to be accurate but not guaranteed.

AERIAL MAP



CLICK [HERE](#) FOR AN INTERACTIVE MAP

*Call me
today!*

TRAVIS SMITH, REALTOR®
Travis@TomSmithLand.com
601.898.2772 **office** | 601.600.0428 **cell**

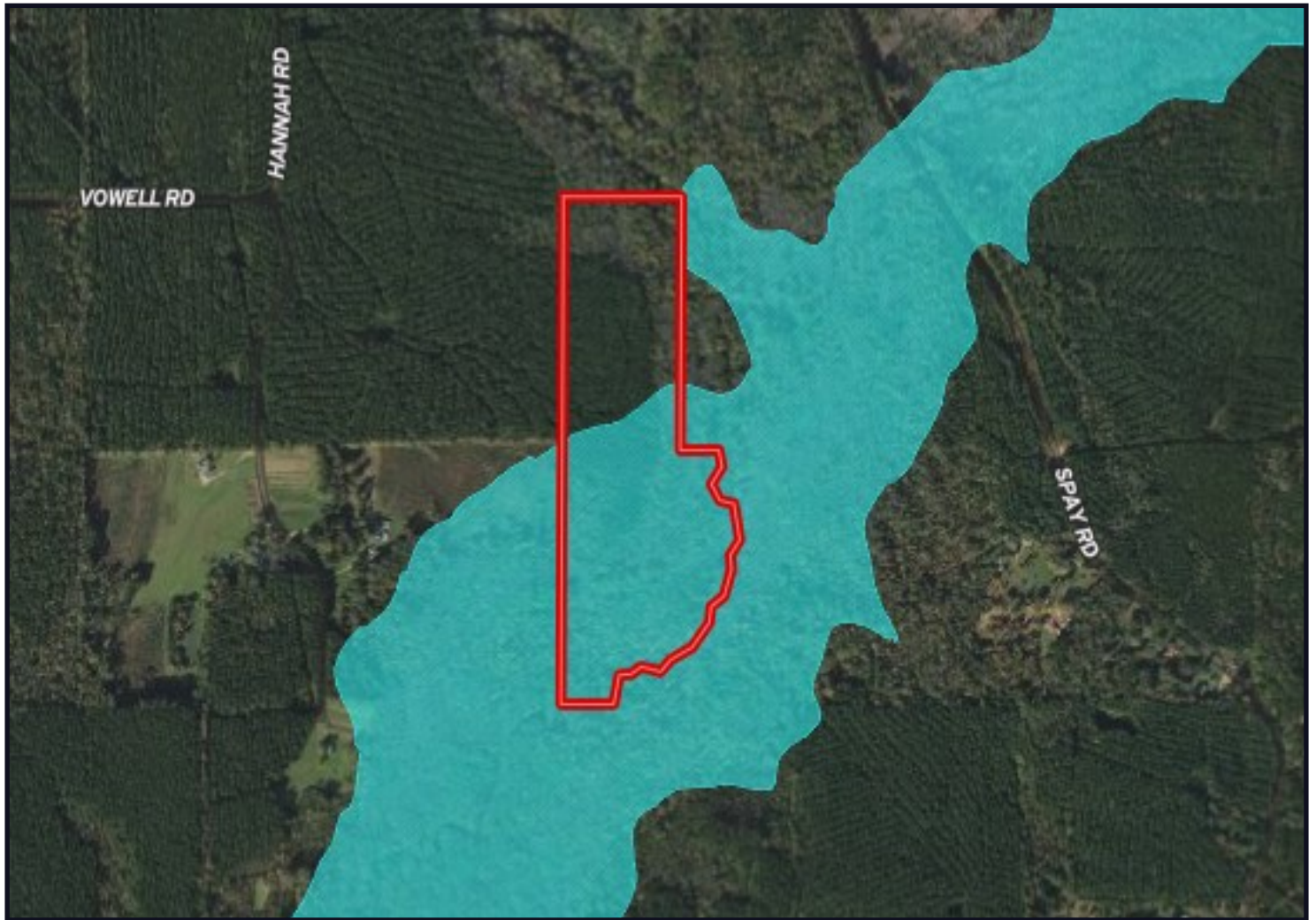


Expect More. Get More.

TomSmithLandandHomes.com

Information is believed to be accurate but not guaranteed.

FLOOD MAP



Call me today!

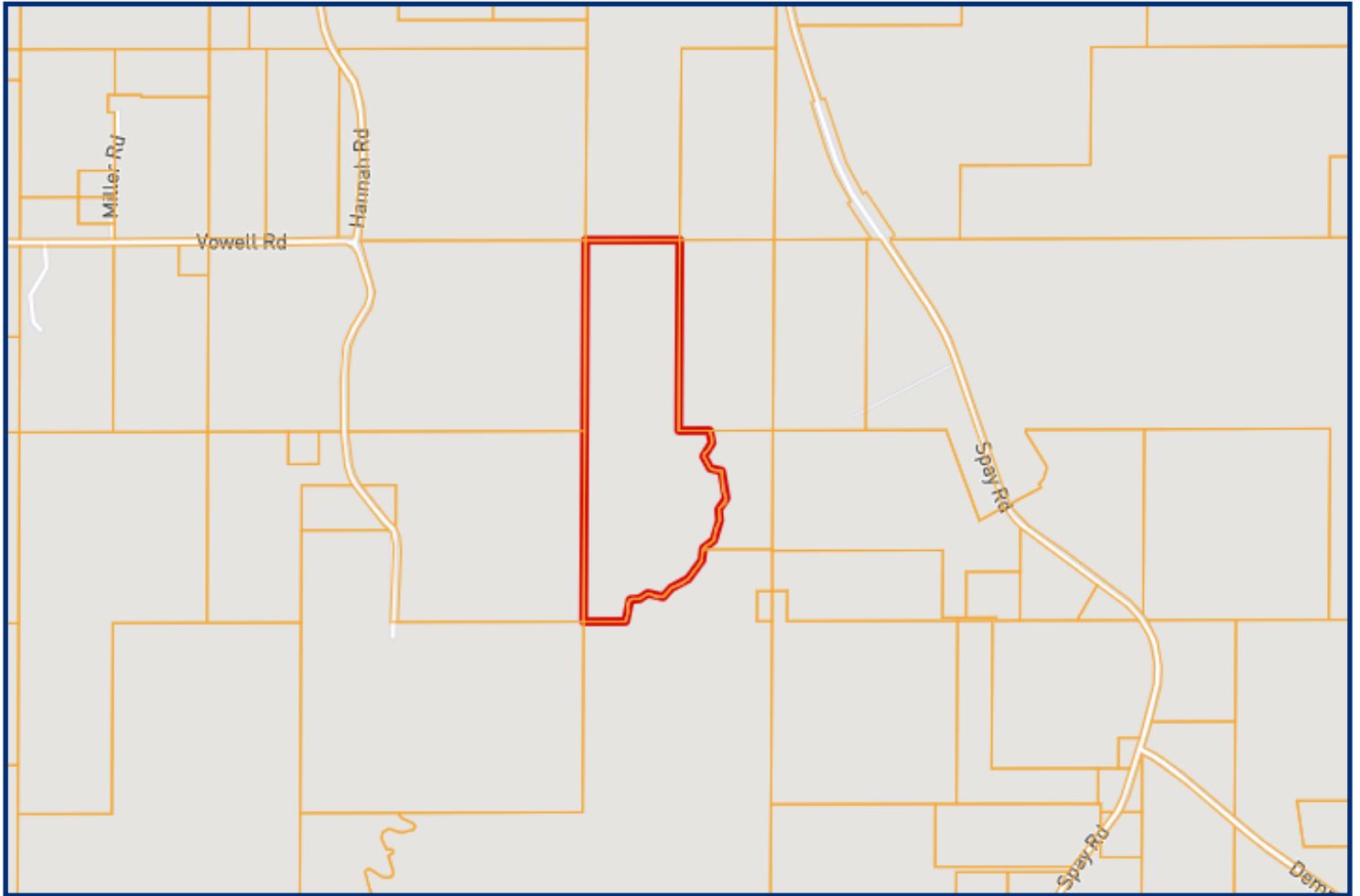
TRAVIS SMITH, REALTOR®
Travis@TomSmithLand.com
601.898.2772 **office** | 601.600.0428 **cell**



TomSmithLandandHomes.com

Information is believed to be accurate but not guaranteed.

OWNERSHIP MAP



Call me today!

TRAVIS SMITH, REALTOR®
Travis@TomSmithLand.com
601.898.2772 **office** | 601.600.0428 **cell**

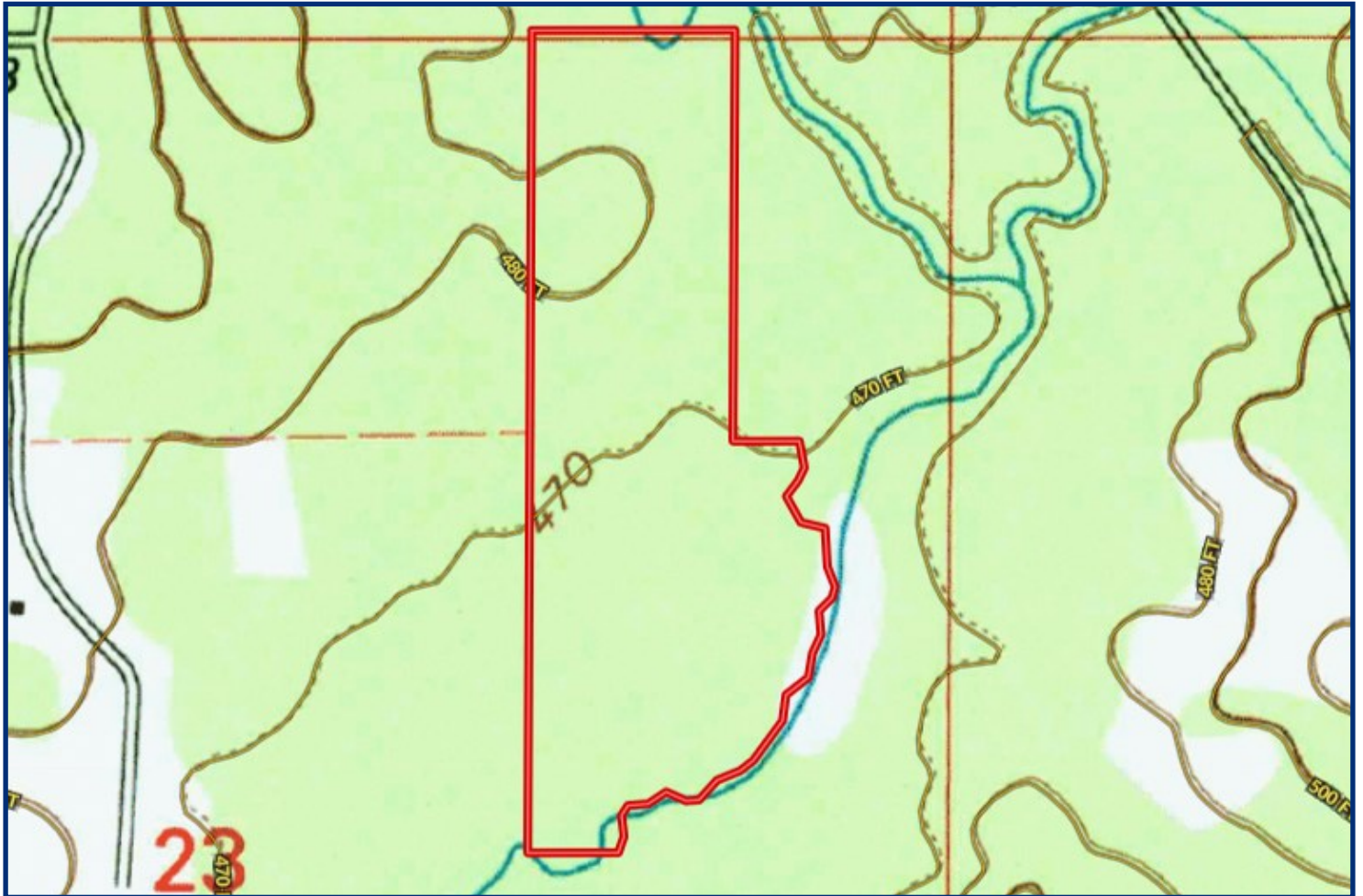


Expect More. Get More.

TomSmithLandandHomes.com

Information is believed to be accurate but not guaranteed.

TOPO MAP



Call me today!

TRAVIS SMITH, REALTOR®
Travis@TomSmithLand.com
601.898.2772 office | 601.600.0428 cell

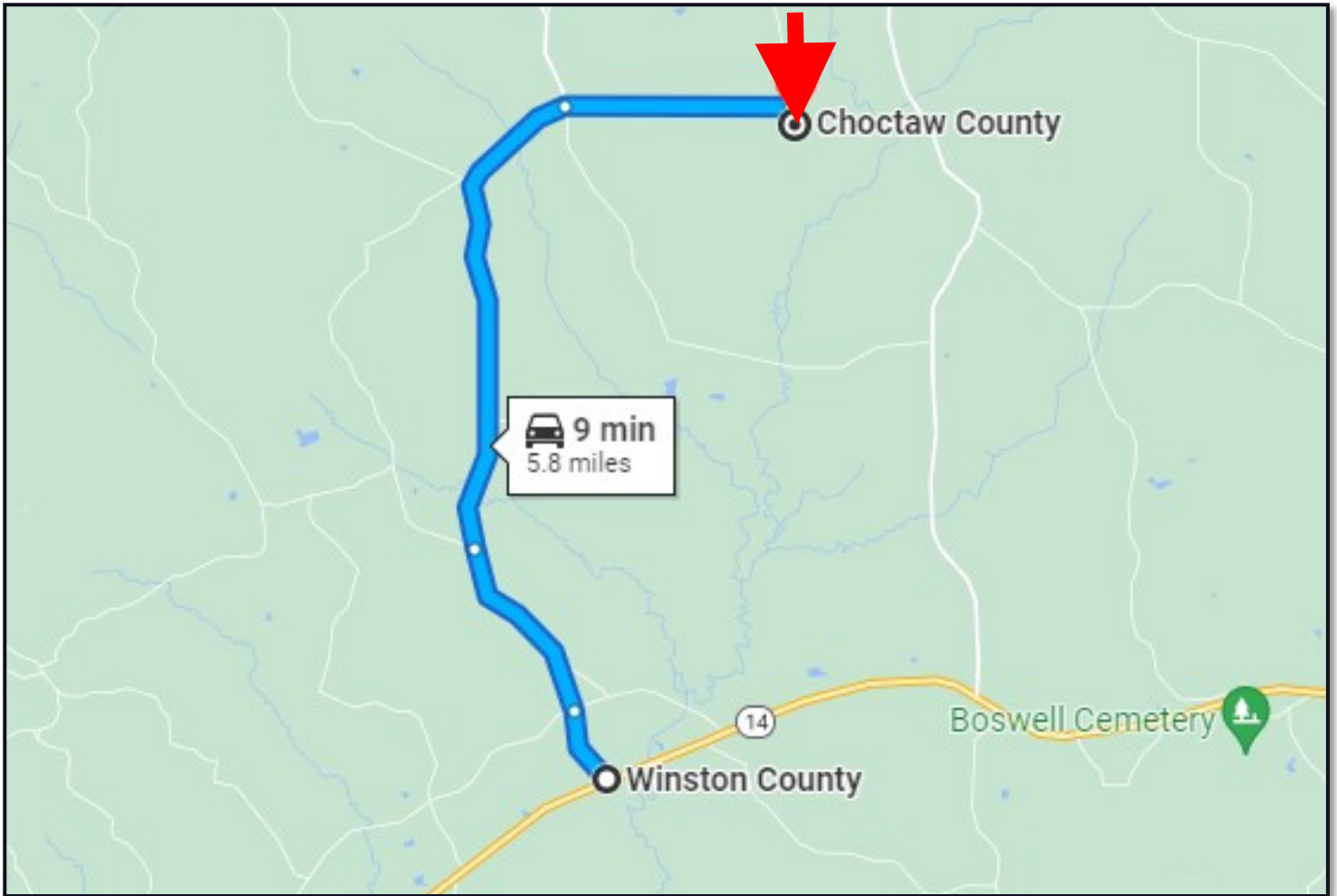


Expect More. Get More.

TomSmithLandandHomes.com

Information is believed to be accurate but not guaranteed.

DIRECTIONAL MAP



DIRECTIONS FROM INTERSECTION OF HWY 14 AND FENTRESS-PAN HANDLE RD: Travel northwest on Fentress-Pan Handle Rd toward Ballard Rd for 0.5 miles. Continue onto Hopewell Rd and travel 1.1 miles. Continue onto Fentress-Panhandle Rd and travel 2.8 miles. Then turn right onto Vowell Rd in 1.3 miles, continue straight on Vowell Rd for 458 ft, take a left on an unmarked dirt Rd for 0.25 miles, and then arrive at the property.

[Google Map Link](#)



LandReport
2011-2022
AMERICA'S
BEST
BROKERAGES

Call me today!

TRAVIS SMITH, REALTOR®
Travis@TomSmithLand.com
601.898.2772 office | 601.600.0428 cell



Expect More. Get More.

TomSmithLandandHomes.com

Information is believed to be accurate but not guaranteed.