

2.6± Acre Homesite in Marshall County, MS



\$51,500

Welcome to your new homesite location in Marshall County, MS. This 2.6± acre tract is situated roughly 25-30 minutes north of Oxford, MS and 20 minutes north of Sardis Lake. There is an older mobile home included with the property that can either be restored or replaced with a newly built home or a newer model mobile home. If you've been looking for a place that's set up to build, this is it! The property features 1.9± acres of timber, an installed septic system, a Well, and an installed power pole with a meter box and electricity. Call Kadero Edley today for your private showing!

[Google Maps Link](#)



Call me today!

KADERO EDLEY, REALTOR®
Kadero@TomSmithLand.com
601.898.2772 **office** | 601.488.7000 **cell**



TomSmithLandandHomes.com

Information is believed to be accurate but not guaranteed.



*Call me
today!*

KADERO EDLEY, REALTOR®
Kadero@TomSmithLand.com
601.898.2772 **office** | 601.488.7000 **cell**



Expect More. Get More.

TomSmithLandandHomes.com

Information is believed to be accurate but not guaranteed.



*Call me
today!*

KADERO EDLEY, REALTOR®
 Kadero@TomSmithLand.com
 601.898.2772 **office** | 601.488.7000 **cell**



Expect More. Get More.

TomSmithLandandHomes.com

Information is believed to be accurate but not guaranteed.

Aerial Map



[Click Here for Interactive Map](#)

*Call me
today!*

KADERO EDLEY, REALTOR®

Kadero@TomSmithLand.com
601.898.2772 **office** | 601.488.7000 **cell**

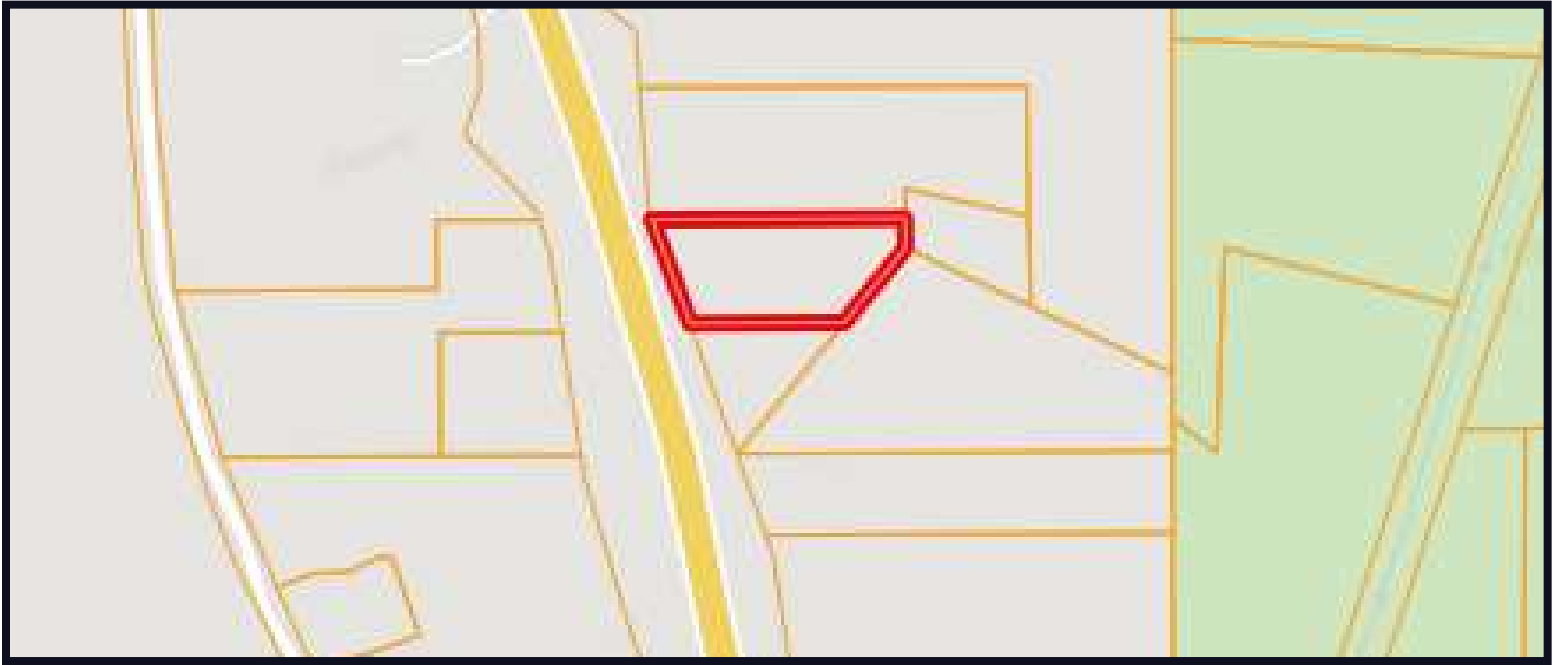


Expect More. Get More.

TomSmithLandandHomes.com

Information is believed to be accurate but not guaranteed.

Ownership Map



Topo Map



Call me today!



KADERO EDLEY, REALTOR®
Kadero@TomSmithLand.com
601.898.2772 **office** | 601.488.7000 **cell**

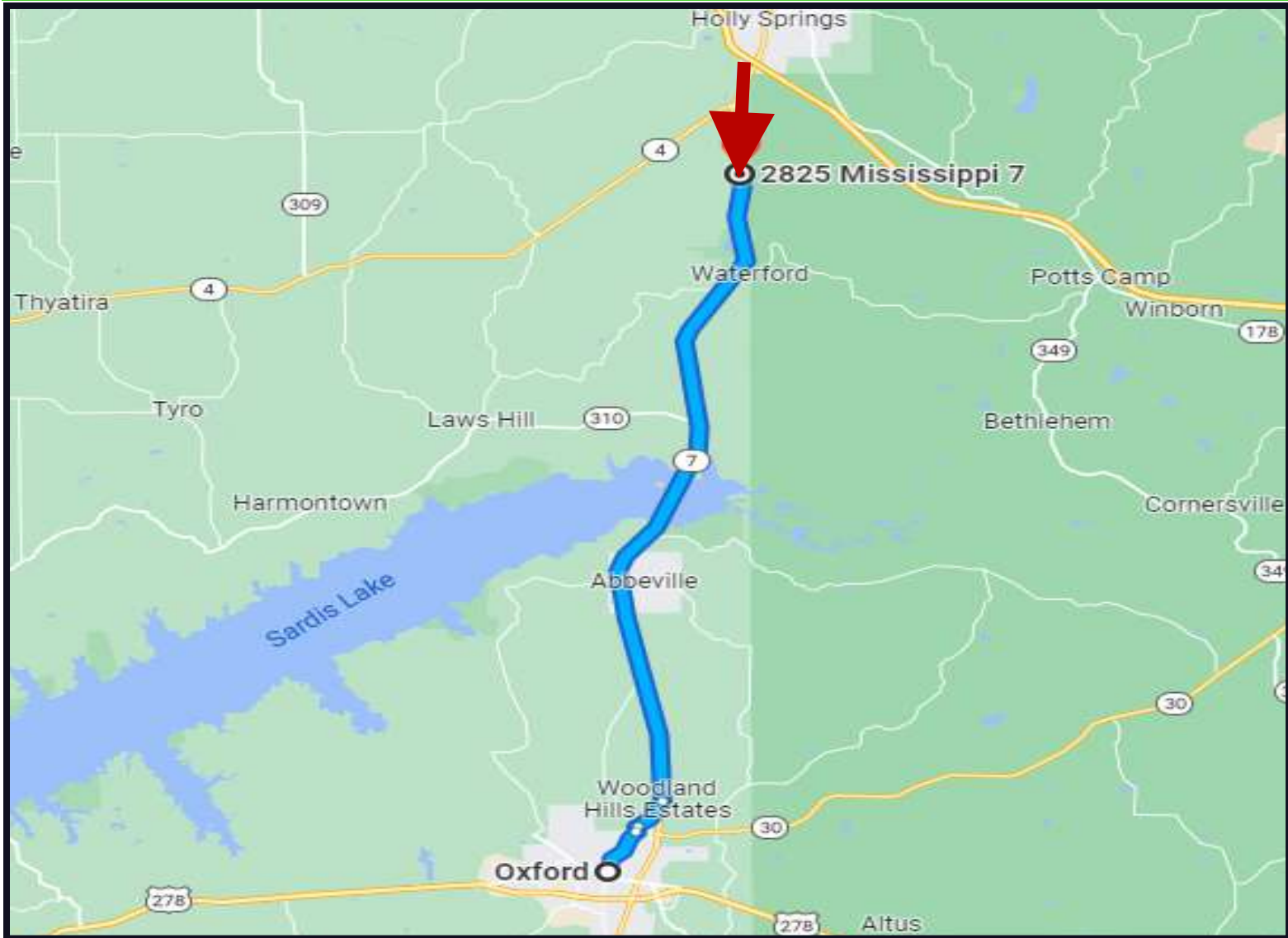


Expect More. Get More.

TomSmithLandandHomes.com

Information is believed to be accurate but not guaranteed.

Directional Map



Directions from Lamar Blvd in Oxford MS: Travel north on Lamar Blvd for 1.5 miles. Continue onto HWY-7 N and travel 0.2 miles. Turn right onto Hurricane Creek Road and travel 217ft. Continue onto CR 178 and travel 1.1 miles. Turn left onto MS-7 N and travel 21.5 miles. The property will be on your right.

[Google MapsLink](#)

Call me today!

KADERO EDLEY, REALTOR®
Kadero@TomSmithLand.com
601.898.2772 **office** | 601.488.7000 **cell**



TomSmithLandandHomes.com

Information is believed to be accurate but not guaranteed.