

Amazing Recreational Tract in Clay County

\$86,400



Don't miss out on this incredible recreational tract located in Clay County, MS. This tract offers great deer and turkey hunting with incredible habitat and wildlife sign throughout. This property is a mix and makeup of hardwoods and pines, young and older. There is power and water available. This 32+/- acres is the perfect size to have plenty to hunt as well as not too much to maintain, not to mention it's priced right and ready to move. Don't wait! Call Travis Smith today for your private viewing!

DIRECTIONS FROM INTERSECTION OF HWY 46 and HWY 50 IN CEDARBLUFF, MS:

Travel north on MS-46 W toward Old Hwy 10 for 6.4 miles, then turn right onto Cummings Rd. Turn left in 0.4 miles and the property is at the end of the dead end Rd Johnny Dean.

[GOOGLE MAP LINK](#)



Call me today!

TRAVIS SMITH, REALTOR®
Travis@TomSmithLand.com
601.898.2772 **office** | 601.600.0428 **cell**



TomSmithLandandHomes.com

Information is believed to be accurate but not guaranteed.



TRAVIS SMITH, REALTOR®
Travis@TomSmithLand.com
601.898.2772 **office** | 601.600.0428 **cell**



TomSmithLandandHomes.com

Information is believed to be accurate but not guaranteed.



Call me today!



TRAVIS SMITH, REALTOR®
Travis@TomSmithLand.com
601.898.2772 **office** | 601.600.0428 **cell**

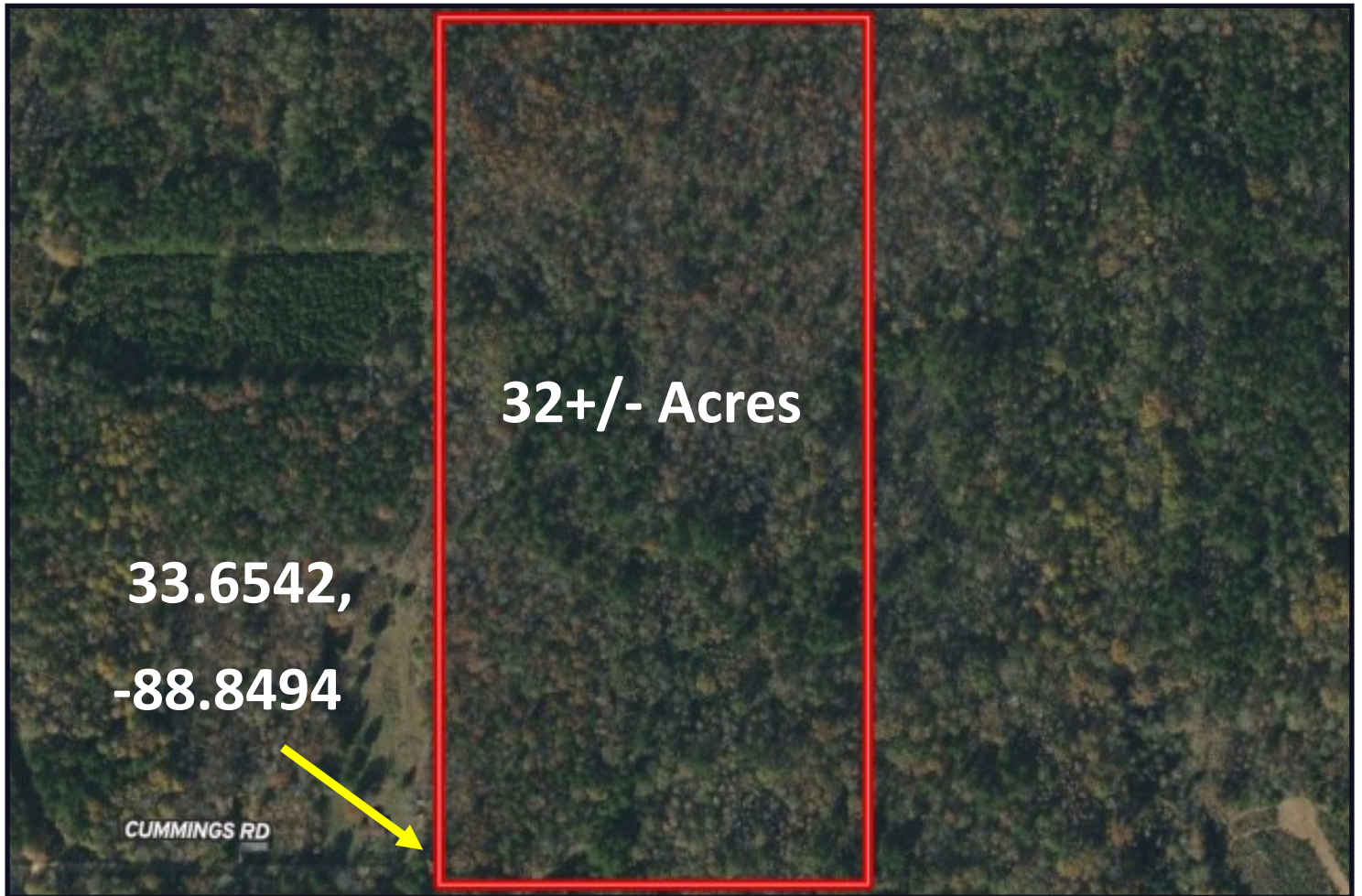


Expect More. Get More.

TomSmithLandandHomes.com

Information is believed to be accurate but not guaranteed.

AERIAL MAP



CLICK [HERE](#) FOR AN INTERACTIVE MAP

*Call me
today!*

TRAVIS SMITH, REALTOR®
Travis@TomSmithLand.com
601.898.2772 **office** | 601.600.0428 **cell**

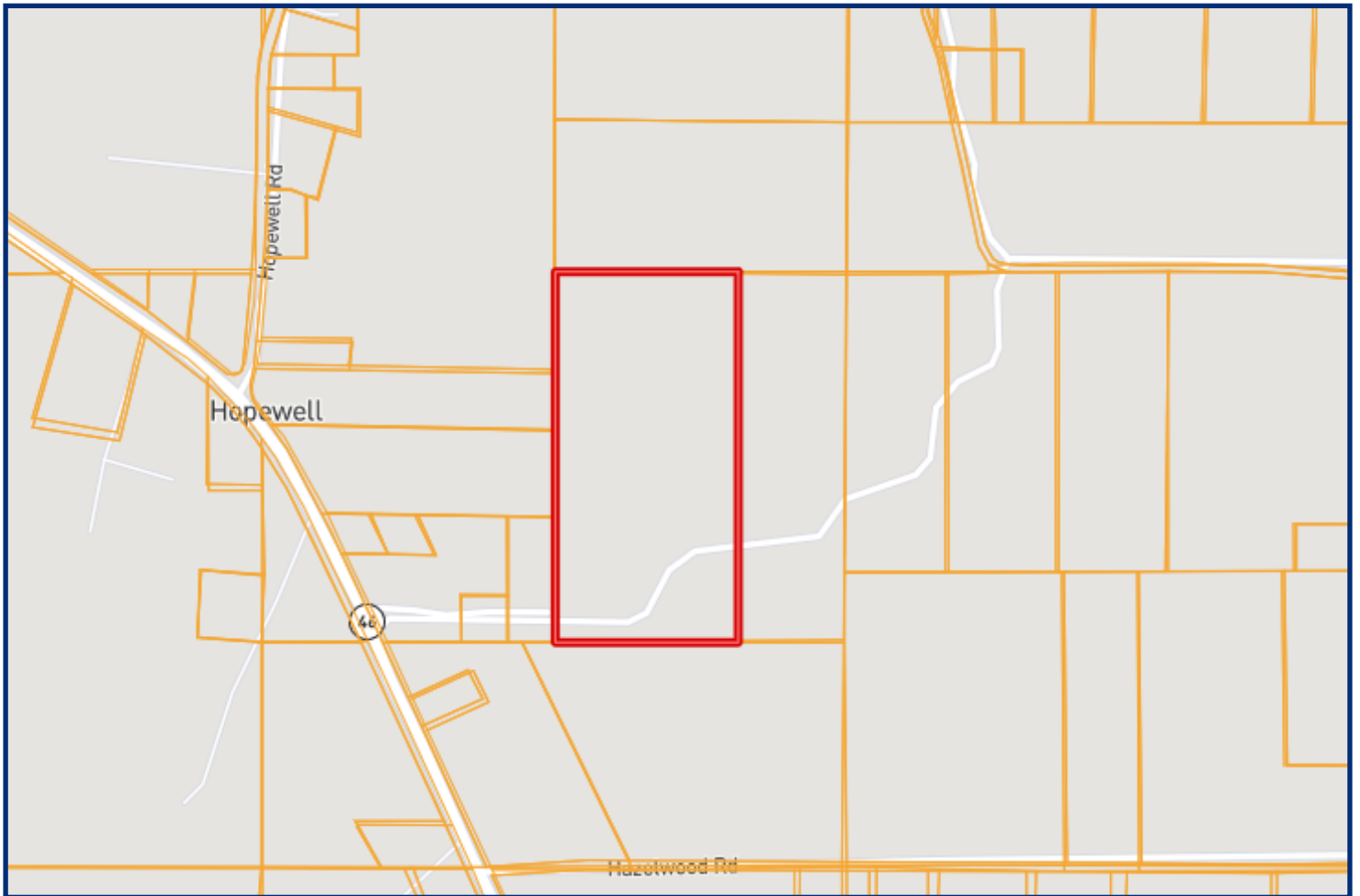


Expect More. Get More.

TomSmithLandandHomes.com

Information is believed to be accurate but not guaranteed.

OWNERSHIP MAP



*Call me
today!*

TRAVIS SMITH, REALTOR®
Travis@TomSmithLand.com
601.898.2772 **office** | 601.600.0428 **cell**

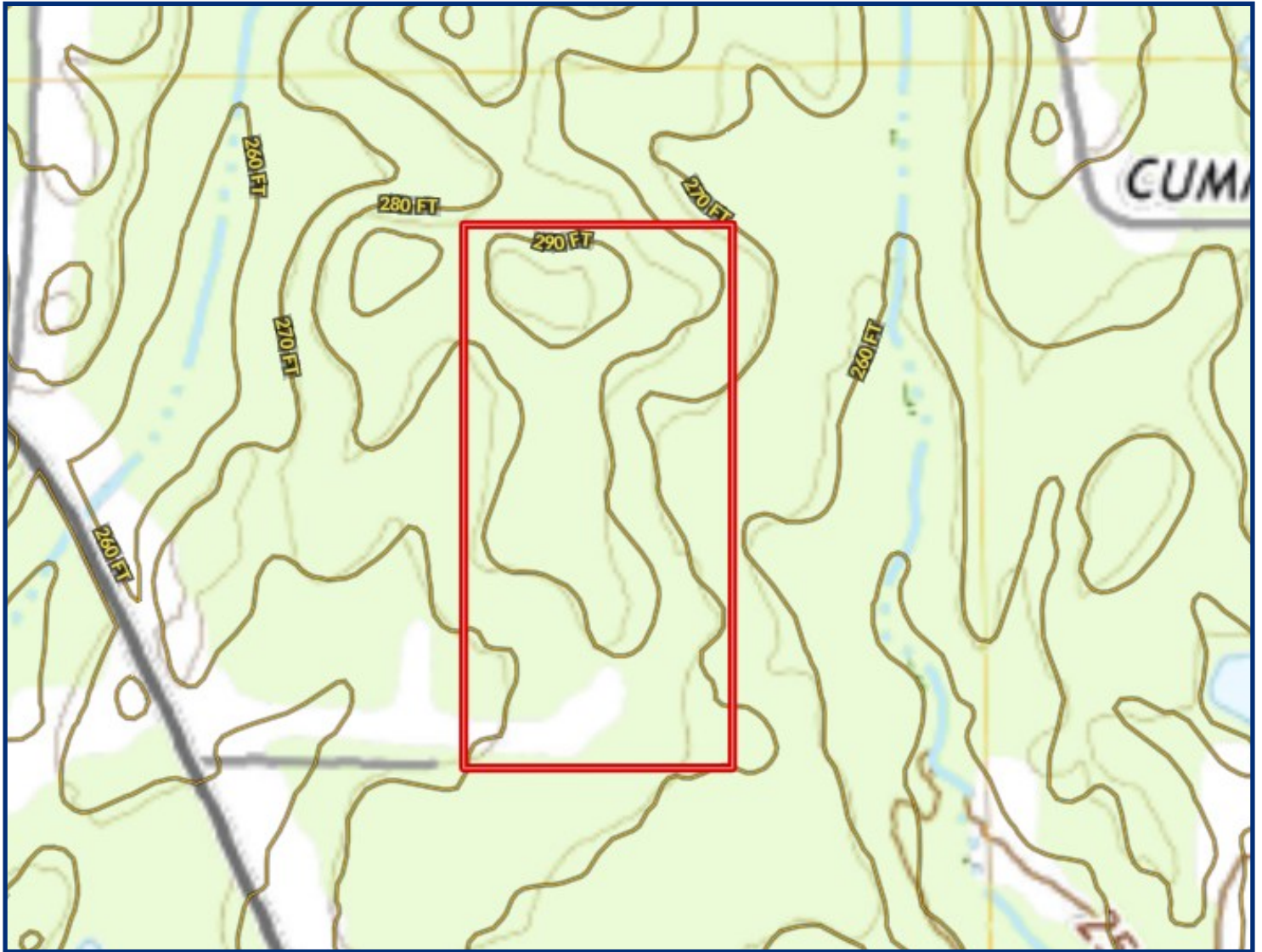


Expect More. Get More.

TomSmithLandandHomes.com

Information is believed to be accurate but not guaranteed.

TOPO MAP



*Call me
today!*

TRAVIS SMITH, REALTOR®
Travis@TomSmithLand.com
601.898.2772 **office** | 601.600.0428 **cell**

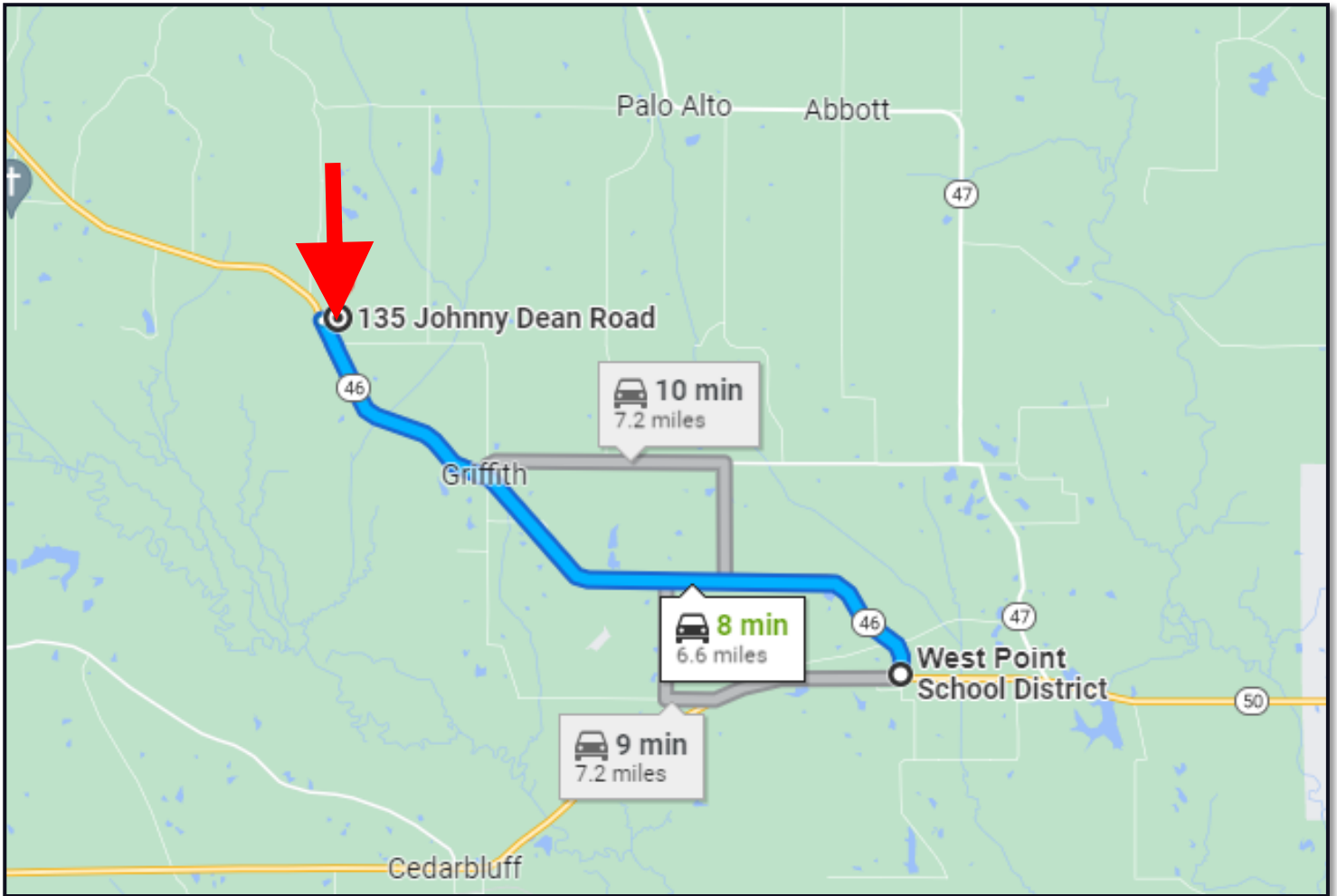


Expect More. Get More.

TomSmithLandandHomes.com

Information is believed to be accurate but not guaranteed.

DIRECTIONAL MAP



DIRECTIONS FROM INTERSECTION OF HWY 46 and HWY 50 IN CEDARBLUFF, MS:

Travel north on MS-46 W toward Old Hwy 10 for 6.4 miles, then turn right onto Cummings Rd. Turn left in 0.4 miles and the property is at the end of the dead end Rd Johnny Dean.

[GOOGLE MAP LINK](#)



Call me today!

TRAVIS SMITH, REALTOR®
Travis@TomSmithLand.com
601.898.2772 **office** | 601.600.0428 **cell**



TomSmithLandandHomes.com

Information is believed to be accurate but not guaranteed.