

Charming 3 Bedroom Home in Bolivar County

801 Maple Street Cleveland, MS

\$255,000



If you're searching for the perfect family home look no further! This charming 3 bedroom with 3 full bath home is full of upgrades! It is 2,320 sqft located on .32+/- ac in Cleveland, MS. The home features 3 spacious bedrooms and a large walk-in closet in the master bedroom. The large fully fenced in private backyard is perfect for kids and pets! The backyard also features a nice brick patio which makes a great spot for patio furniture and a grill for entertaining. Conveniently located in Bolivar County, this home is a short walk away from Firemans Park featuring tennis courts, walking trails, and a playground for the kids! Give Anthony Steen a call today!



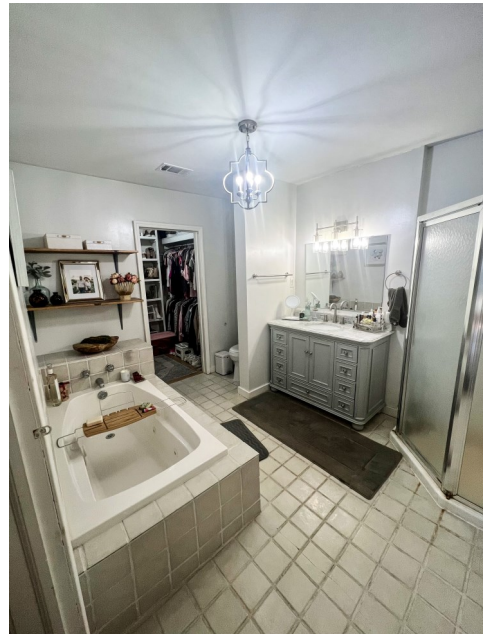
Call me today!

ANTHONY STEEN, REALTOR®
Anthony@TomSmithLand.com
662.441.2500 **office** | 662.645.5151 **cell**



TomSmithLandandHomes.com

Information is believed to be accurate but not guaranteed.



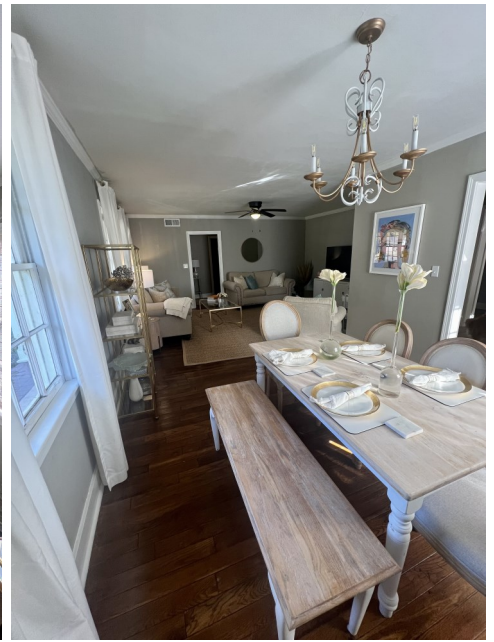
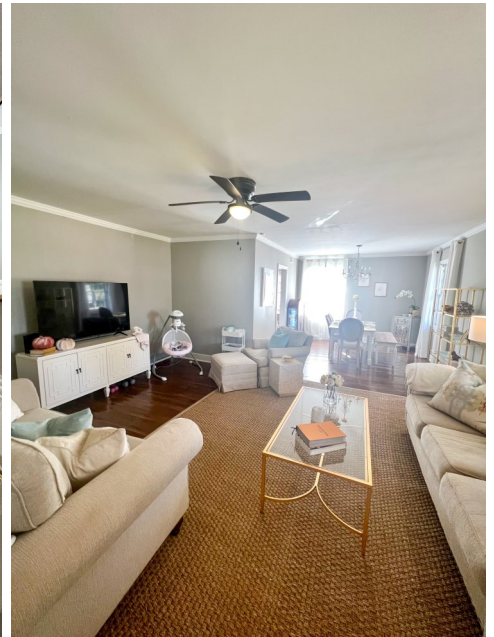
Call me today!

ANTHONY STEEN, REALTOR®
 Anthony@TomSmithLand.com
 662.441.2500 office | 662.645.5151 cell



TomSmithLandandHomes.com

Information is believed to be accurate but not guaranteed.



Call me today!

ANTHONY STEEN, REALTOR®
 Anthony@TomSmithLand.com
 662.441.2500 office | 662.645.5151 cell



TomSmithLandandHomes.com

Information is believed to be accurate but not guaranteed.

Aerial Map



[Click to view interactive map](#)

Call me today!

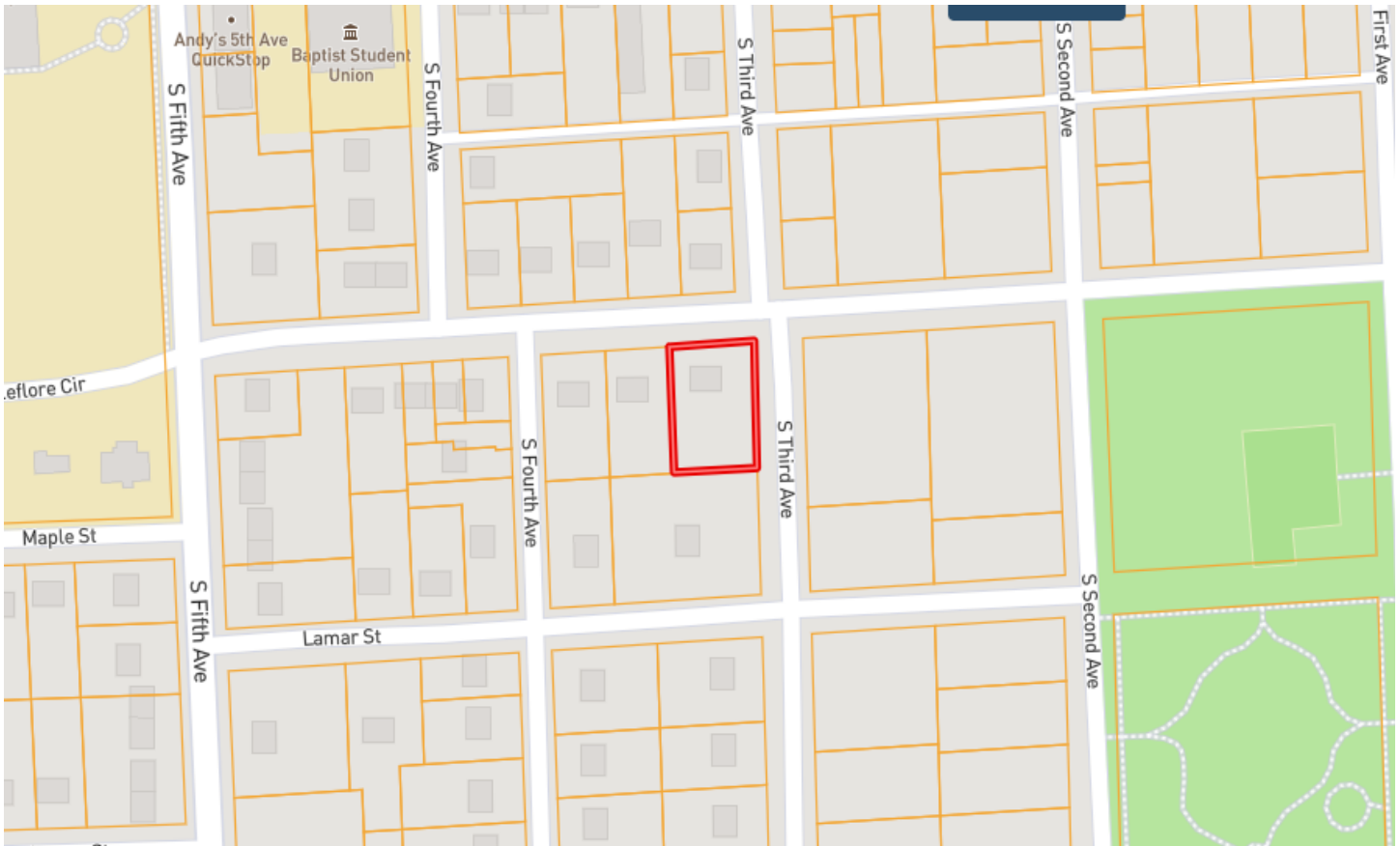
ANTHONY STEEN, REALTOR®
Anthony@TomSmithLand.com
662.441.2500 **office** | 662.645.5151 **cell**



TomSmithLandandHomes.com

Information is believed to be accurate but not guaranteed.

Ownership Map



Click to view [Interactive Map](#)

Call me today!

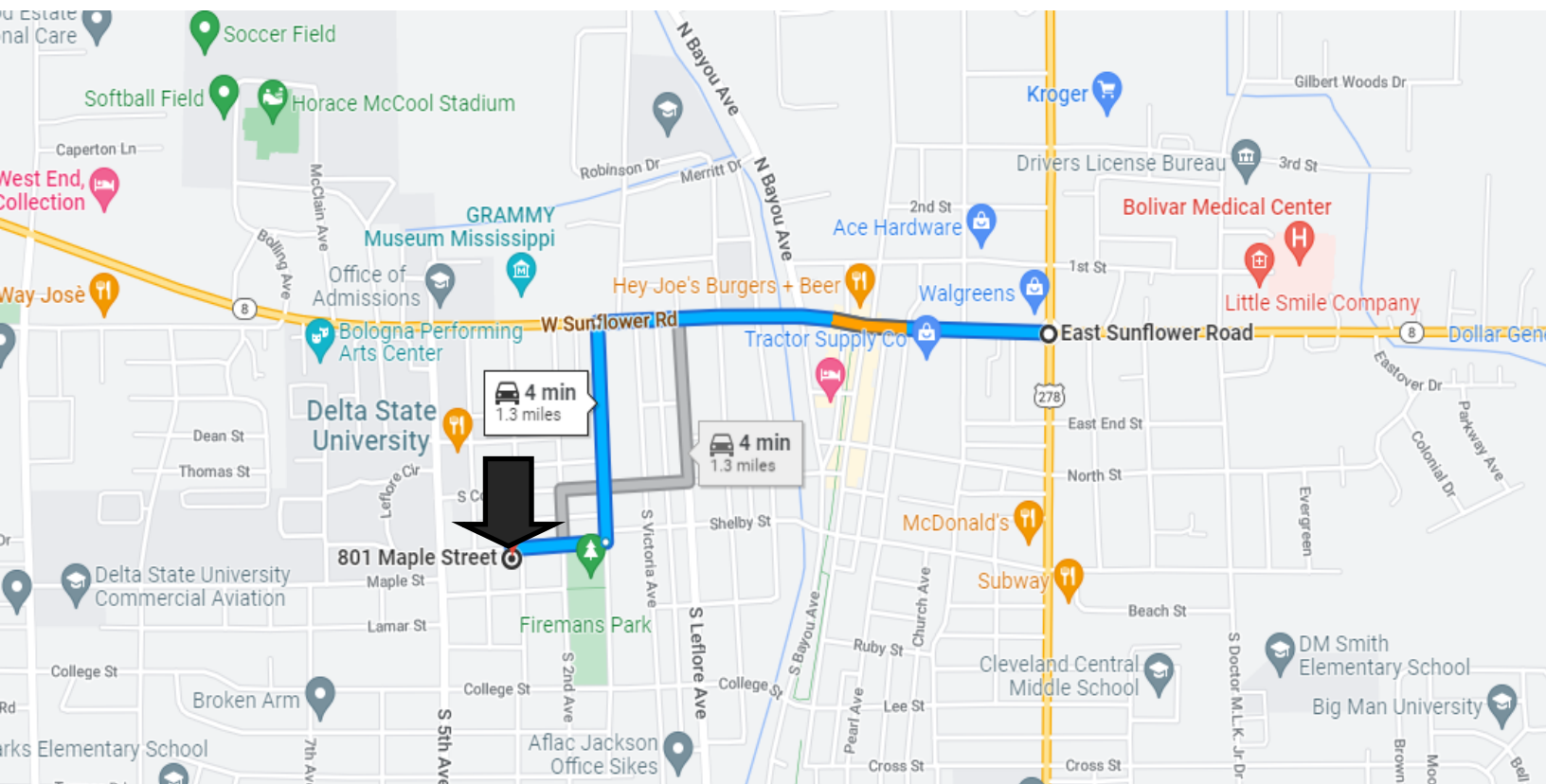
ANTHONY STEEN, REALTOR®
Anthony@TomSmithLand.com
662.441.2500 **office** | 662.645.5151 **cell**



TomSmithLandandHomes.com

Information is believed to be accurate but not guaranteed.

Directional Map



Directions from Cleveland, MS: Starting from the intersection of Hwy 8 and 278 head west on E Sunflower Rd toward N Chrisman Avenue for 0.8 of mile. Turn left onto N 1st avenue continuing for 0.3 of a mile. Then turn right onto Maple Street. The house is located on the left in 0.2 of a mile.

[Google Map Link](#)

Call me today!

ANTHONY STEEN, REALTOR®
Anthony@TomSmithLand.com
662.441.2500 **office** | 662.645.5151 **cell**



TomSmithLandandHomes.com

Information is believed to be accurate but not guaranteed.