

Great Opportunity for a Homesite

1+/- Acre in Rankin County, MS

\$10,000



This Rankin County, MS, the property is one that you don't want to miss. Located in Florence, MS, with an acre of land, you have plenty of room for a home but not too much to manage. This is a great opportunity to be close to town and still have some space for yourself. The property is heavily wooded with mostly hardwoods. No mobile homes are allowed, and utilities are available.

Call Travis Smith today for your private viewing!

DIRECTIONS FROM INTERSECTION HWY 469 AND HWY 49 Florence, MS: Head southwest on Hwy 469 S/E Main St toward Hwy 469 S/E Main St for 0.4 miles, then continue straight onto W Main St for 0.5 miles. Then Turn right onto Meadows Dr and the destination is in 0.1 miles at the end of Meadows Dr.

[Google Map Link](#)



Call me today!

TRAVIS SMITH, REALTOR®
Travis@TomSmithLand.com
601.898.2772 **office** | 601.600.0428 **cell**



TomSmithLandandHomes.com

Information is believed to be accurate but not guaranteed.



*Call me
today!*

TRAVIS SMITH, REALTOR®
 Travis@TomSmithLand.com
 601.898.2772 **office** | 601.600.0428 **cell**



Expect More. Get More.

TomSmithLandandHomes.com

Information is believed to be accurate but not guaranteed.

AERIAL MAP



CLICK [HERE](#) FOR AN INTERACTIVE MAP

*Call me
today!*

TRAVIS SMITH, REALTOR®
Travis@TomSmithLand.com
601.898.2772 **office** | 601.600.0428 **cell**

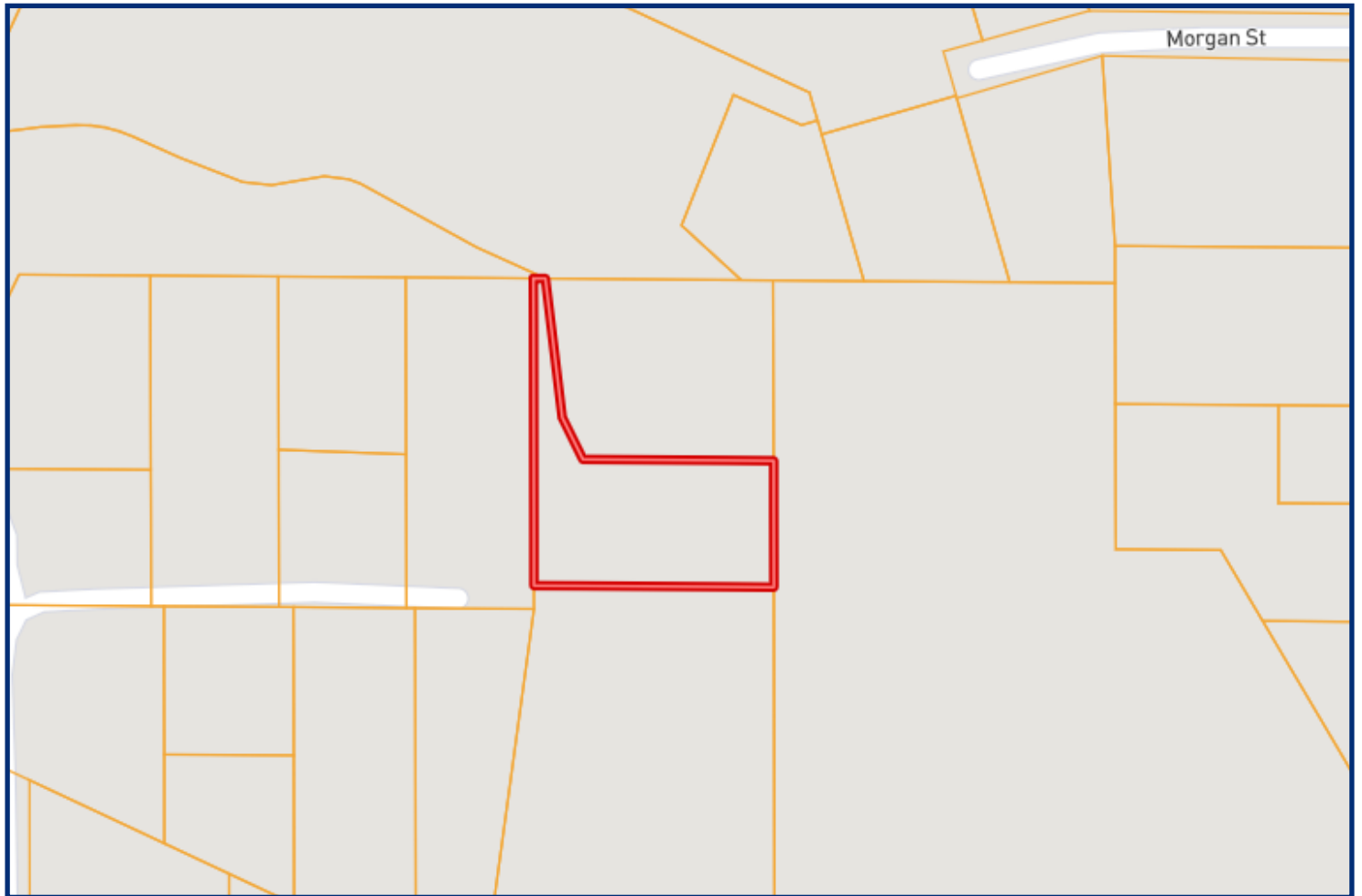


Expect More. Get More.

TomSmithLandandHomes.com

Information is believed to be accurate but not guaranteed.

OWNERSHIP MAP



*Call me
today!*

TRAVIS SMITH, REALTOR®
Travis@TomSmithLand.com
601.898.2772 **office** | 601.600.0428 **cell**

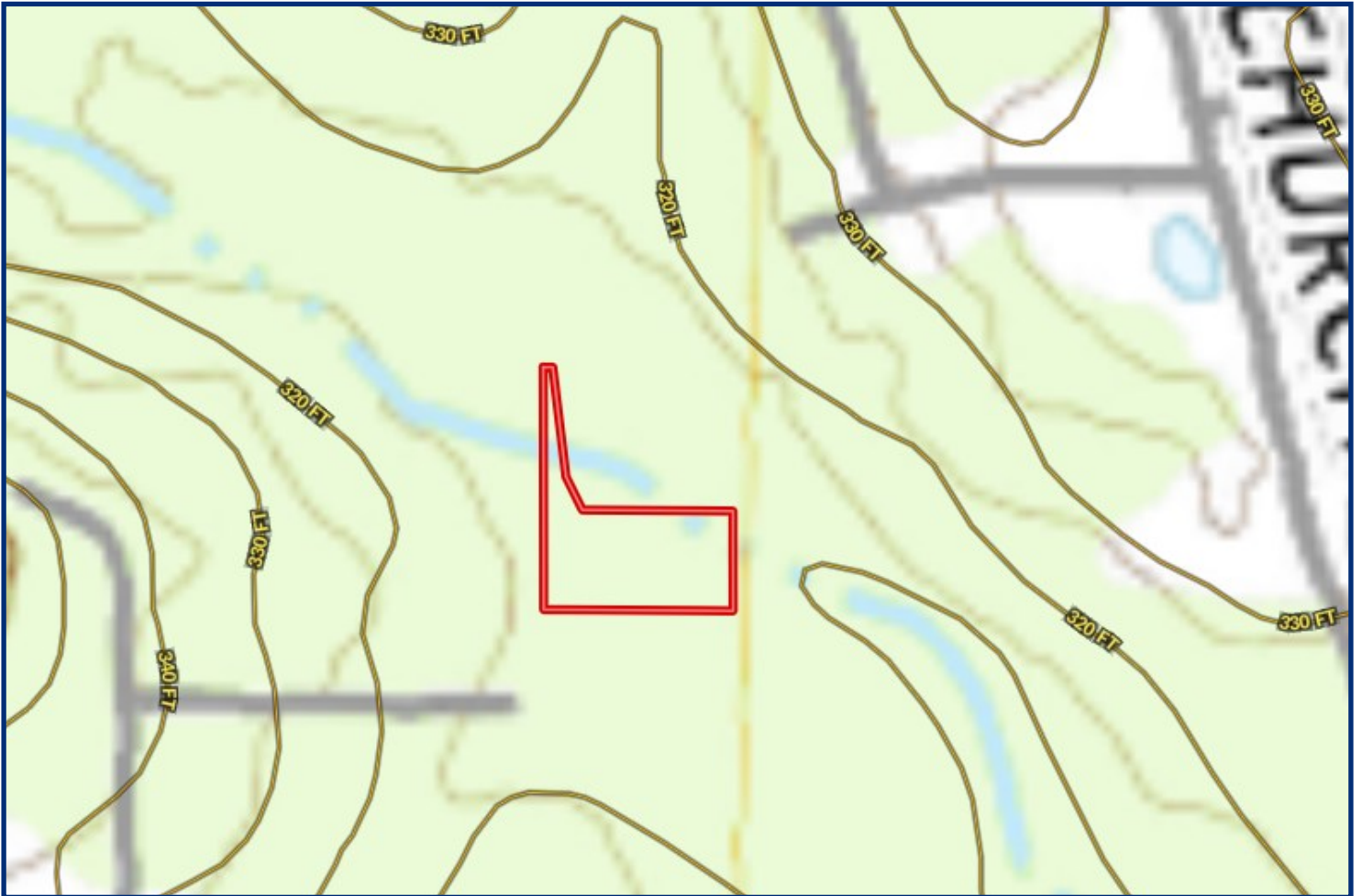


Expect More. Get More.

TomSmithLandandHomes.com

Information is believed to be accurate but not guaranteed.

TOPO MAP



*Call me
today!*

TRAVIS SMITH, REALTOR®
Travis@TomSmithLand.com
601.898.2772 **office** | 601.600.0428 **cell**

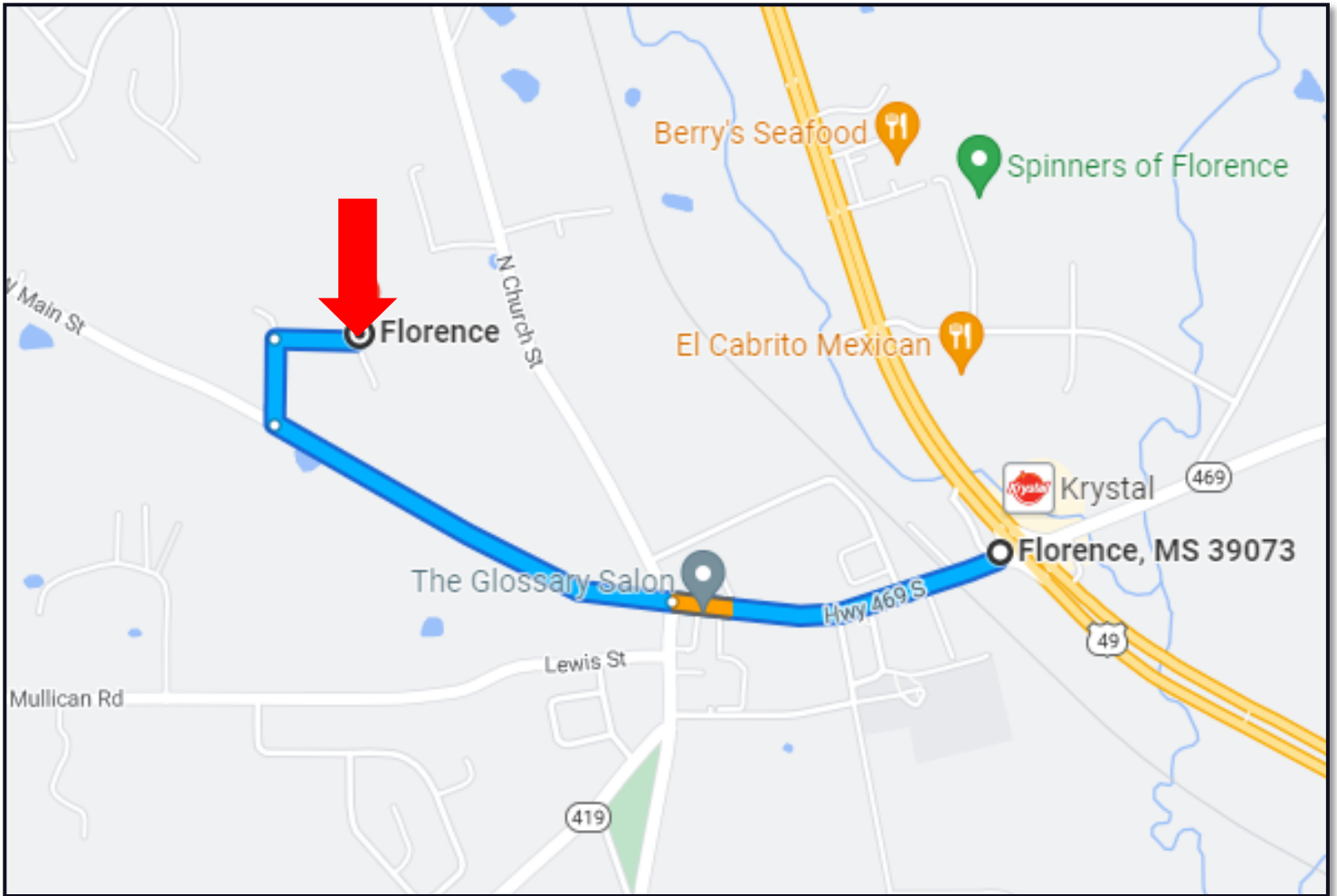


Expect More. Get More.

TomSmithLandandHomes.com

Information is believed to be accurate but not guaranteed.

DIRECTIONAL MAP



DIRECTIONS FROM INTERSECTION HWY 469 AND HWY 49 Florence, MS:

Head southwest on Hwy 469 S/E Main St toward Hwy 469 S/E Main St for 0.4 miles, then continue straight onto W Main St for 0.5 miles. Then Turn right onto Meadows Dr and the destination is in 0.1 miles at the end of Meadows Dr.

[Google Map Link](#)



Call me today!

TRAVIS SMITH, REALTOR®
Travis@TomSmithLand.com
601.898.2772 **office** | 601.600.0428 **cell**



TomSmithLandandHomes.com

Information is believed to be accurate but not guaranteed.