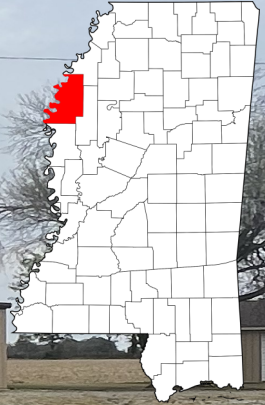


Commercial/ Residential Building

Bolivar County, MS

1106 Township Road Merigold, MS



\$250,000

Currently, a church in Bolivar County, MS, this property has been zoned commercial or residential and could easily be renovated into your dream home! Presently, the property features 2,200 sq. ft., two bathrooms, and a daycare room with plenty of storage in the back room. The pews will stay with the building.

Outside, the 900+/- sq. ft. metal building is equipped with a full kitchen making it a great room for entertaining. A metal shop behind the church has a roll-down door to store the lawn tools for upkeep. Additionally, the property has a gated parking lot that will hold 40 +/- vehicles. Finally, with the property sitting on .88 +/- acres, it has plenty of yard space for outdoor activities.

Call me today!

ANTHONY STEEN, REALTOR®
Anthony@TomSmithLand.com
662.441.2500 **office** | 662.645.5151 **cell**



TomSmithLandandHomes.com

Information is believed to be accurate but not guaranteed.



Call me today!

ANTHONY STEEN, REALTOR®
Anthony@TomSmithLand.com
662.441.2500 **office** | 662.645.5151 **cell**



TomSmithLandandHomes.com

Information is believed to be accurate but not guaranteed.



Call me today!

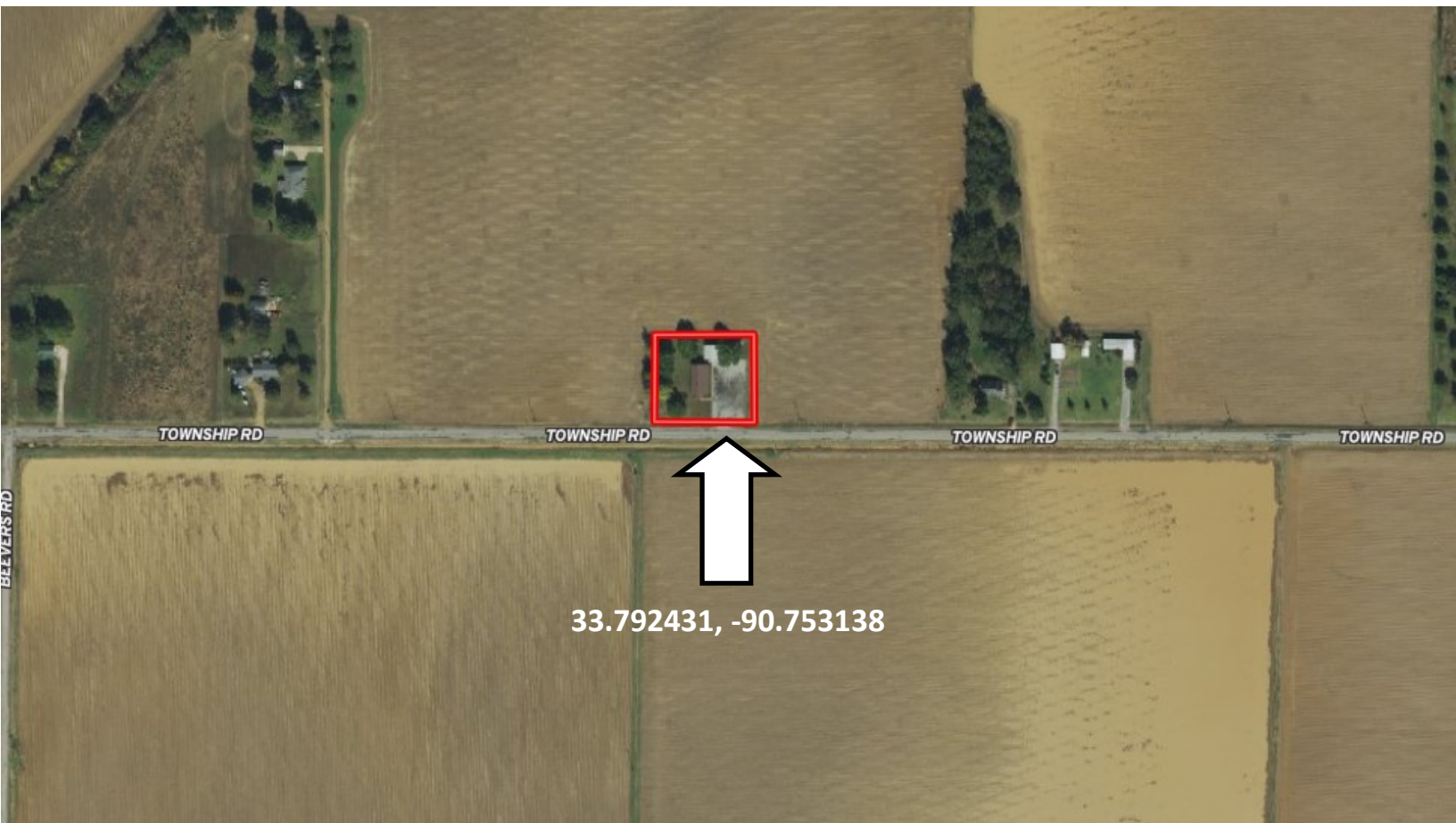
ANTHONY STEEN, REALTOR®
 Anthony@TomSmithLand.com
 662.441.2500 office | 662.645.5151 cell



TomSmithLandandHomes.com

Information is believed to be accurate but not guaranteed.

Aerial Map



[Click to view interactive map](#)

Call me today!

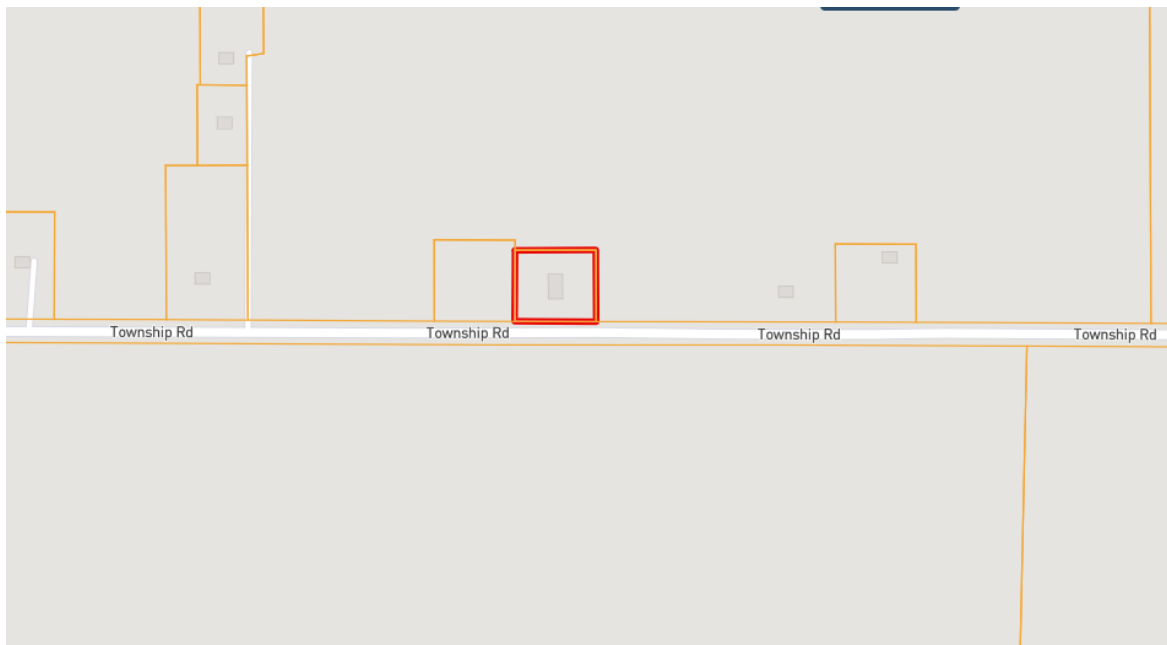
ANTHONY STEEN, REALTOR®
Anthony@TomSmithLand.com
662.441.2500 **office** | 662.645.5151 **cell**



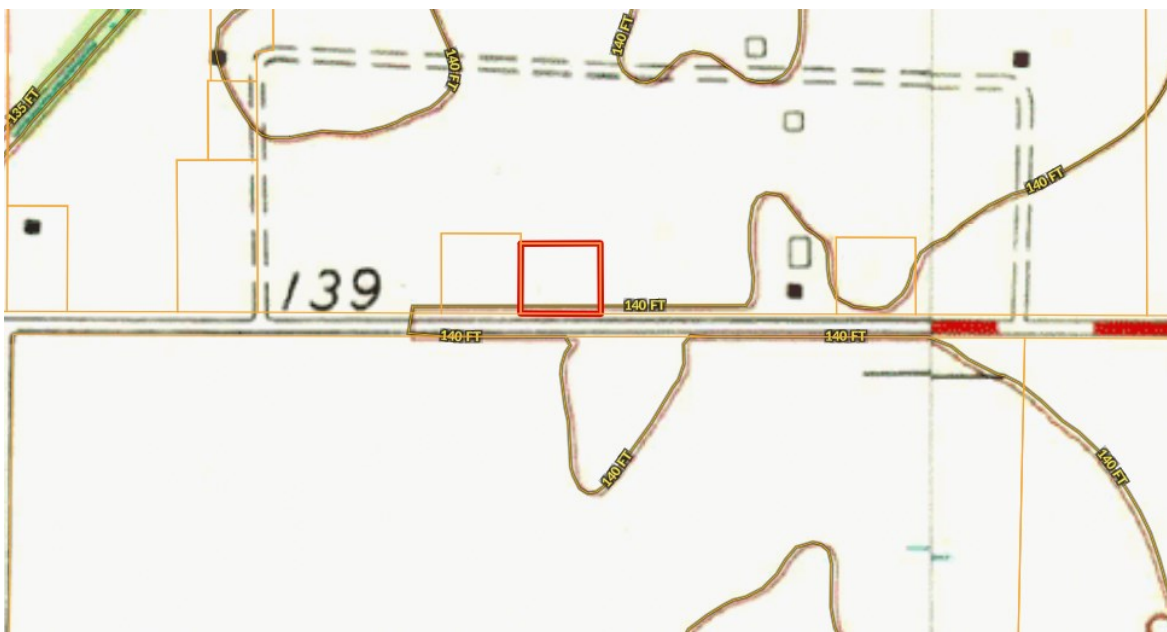
TomSmithLandandHomes.com

Information is believed to be accurate but not guaranteed.

Ownership Map



Topo Map



Call me today!

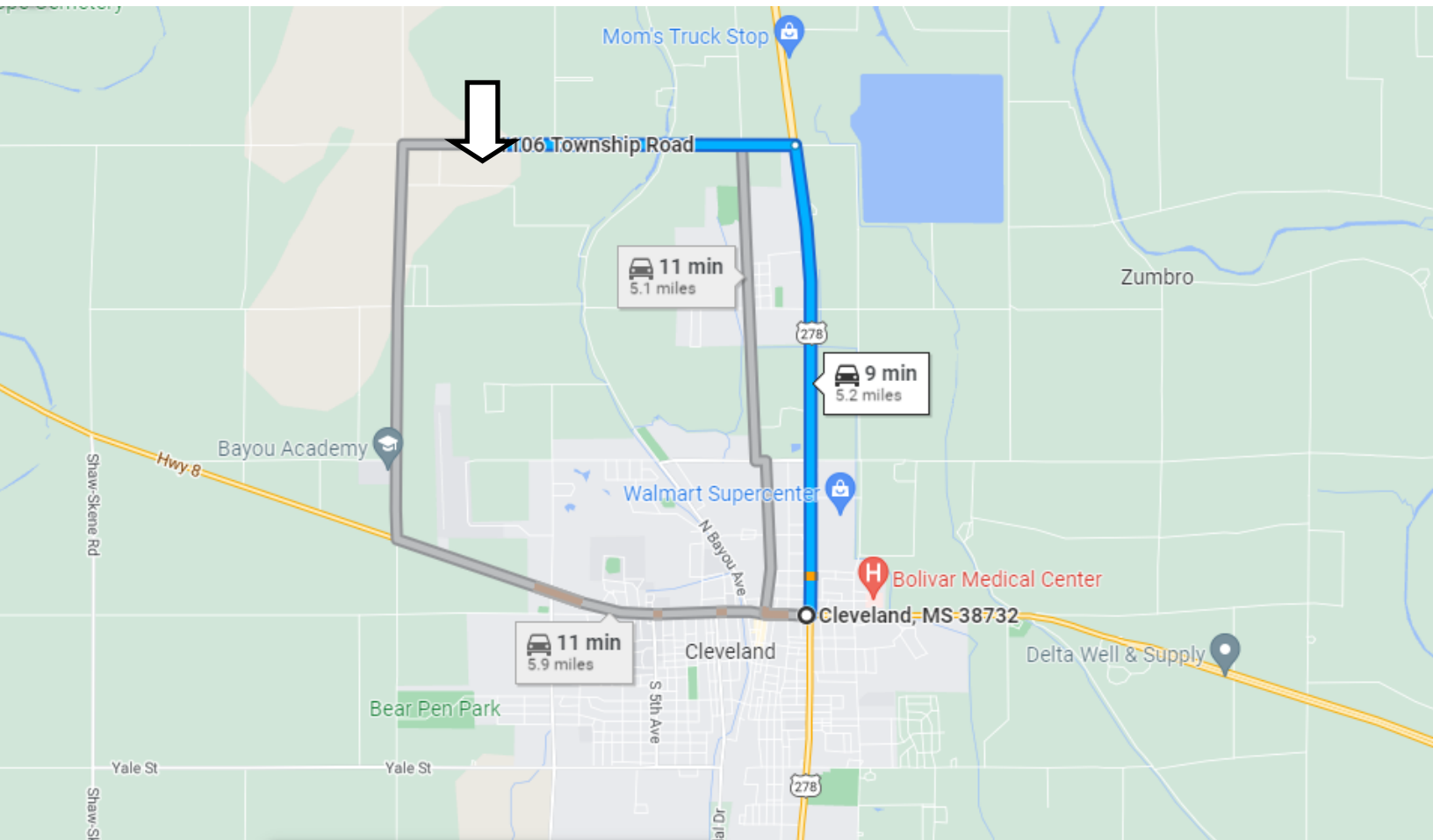
ANTHONY STEEN, REALTOR®
Anthony@TomSmithLand.com
662.441.2500 **office** | 662.645.5151 **cell**



TomSmithLandandHomes.com

Information is believed to be accurate but not guaranteed.

Directional Map



Directions from Cleveland, MS: Starting at the intersection of Hwy 8 and 278. Head east on US-278 E/US-61 N/N Davis Ave toward N Davis Ave. Continue to follow US-278 E/ US-61 N for 3.1 miles. Turn left onto Township Road for 2 miles. The destination will be on your right.

Google Map Directions

Call me today!

ANTHONY STEEN, REALTOR®
Anthony@TomSmithLand.com
662.441.2500 **office** | 662.645.5151 **cell**



TomSmithLandandHomes.com

Information is believed to be accurate but not guaranteed.