

3.85± ACRE HOMESITE IN CLARKE COUNTY, MS



\$47,500



Take a look at this 3.85± acre homesite in Clarke County, MS! This property is secluded in a quiet country setting while still being located near the amenities of Meridian, MS. The property has so much potential as a future homesite with several layout options and plenty of yard leftover to play in.

Directions from the intersection of MS-19 and US-45 in Meridian, MS: Travel south on US-45, in 11.2 miles, turn left onto Luther Walker Rd, in .7 miles, take a slight right onto Country Rd 470, in 2.0 miles, the property will be on the right.



Call me today!

ROBERT SMITH, REALTOR®
Robert@TomSmithLand.com
601.990.5070 **office** | 769.257.8139 **cell**



TomSmithLandandHomes.com

Information is believed to be accurate but not guaranteed.



*Call me
today!*

ROBERT SMITH, REALTOR®
Robert@TomSmithLand.com
601.990.5070 **office** | 769.257.8139 **cell**



Expect More. Get More.

TomSmithLandandHomes.com

Information is believed to be accurate but not guaranteed.

Aerial Map



Interactive Map Link

Call me today!

ROBERT SMITH, REALTOR®

Robert@TomSmithLand.com

601.990.5070 **office** | 769.257.8139 **cell**

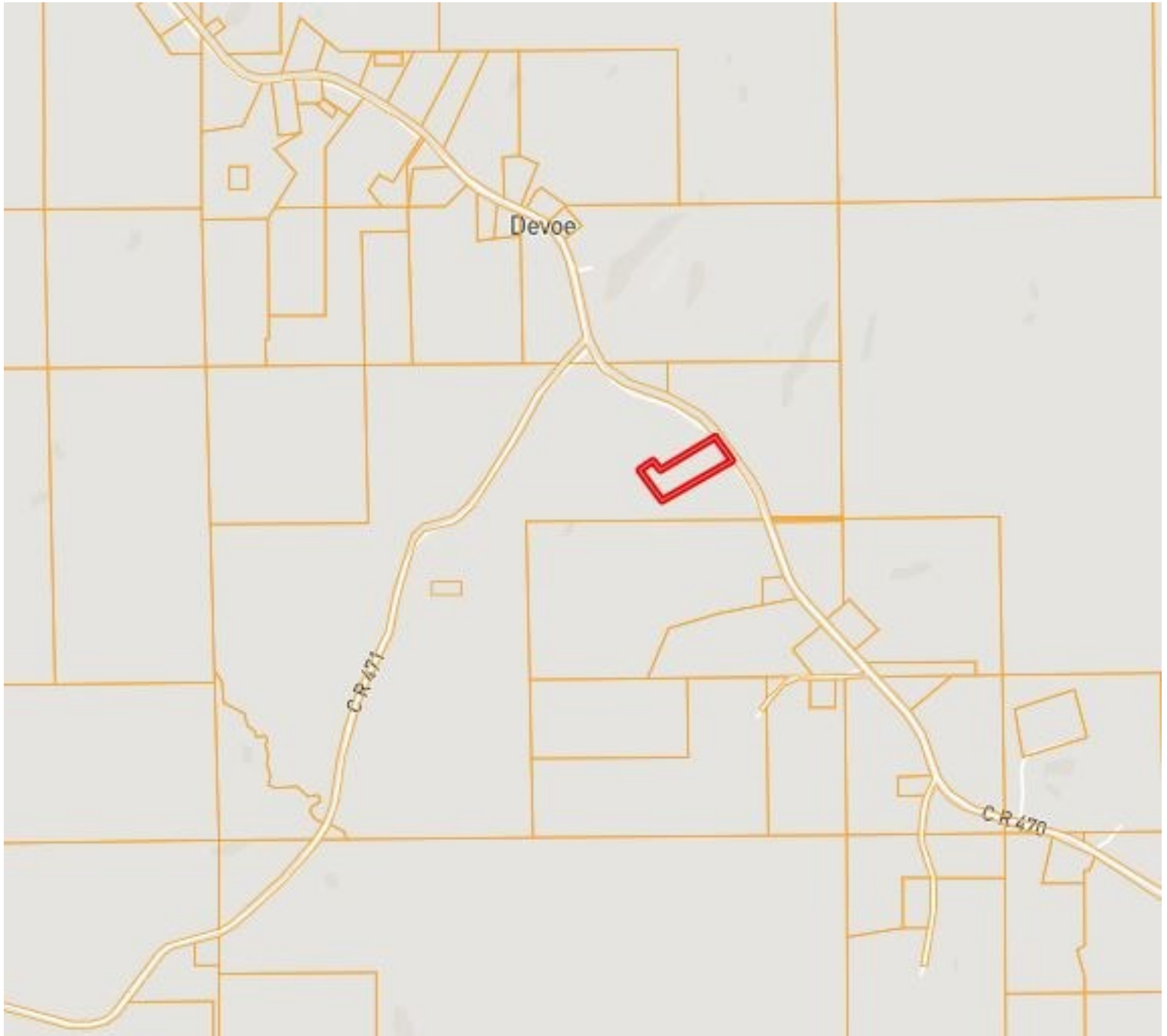


Expect More. Get More.

TomSmithLandandHomes.com

Information is believed to be accurate but not guaranteed.

Ownership Map



*Call me
today!*

ROBERT SMITH, REALTOR®
Robert@TomSmithLand.com
601.990.5070 **office** | 769.257.8139 **cell**



Expect More. Get More.

TomSmithLandandHomes.com

Information is believed to be accurate but not guaranteed.

Topography Map



*Call me
today!*

ROBERT SMITH, REALTOR®
Robert@TomSmithLand.com
601.990.5070 **office** | 769.257.8139 **cell**

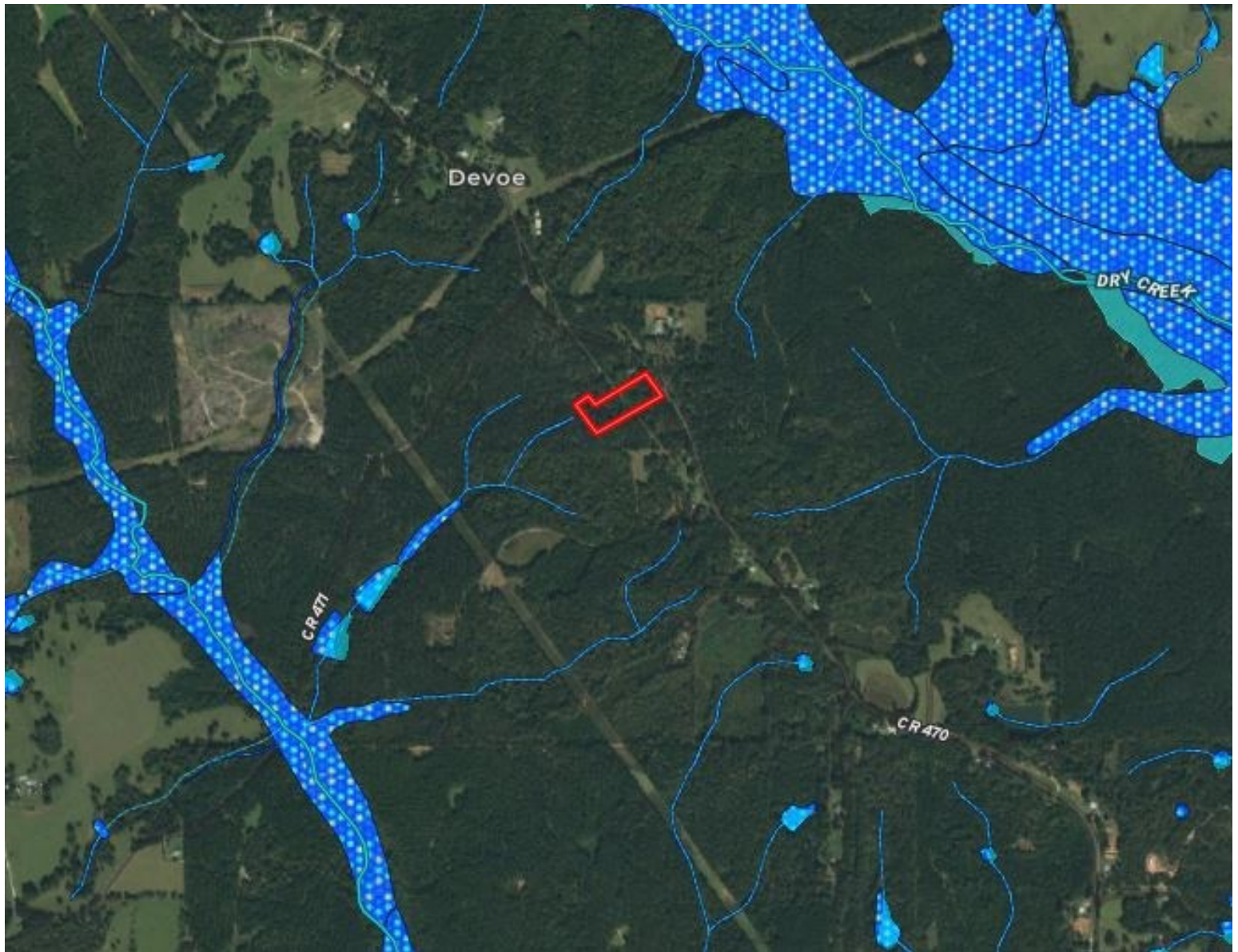


Expect More. Get More.

TomSmithLandandHomes.com

Information is believed to be accurate but not guaranteed.

Flood Map



*Call me
today!*

ROBERT SMITH, REALTOR®
Robert@TomSmithLand.com
601.990.5070 **office** | 769.257.8139 **cell**



Expect More. Get More.

TomSmithLandandHomes.com

Information is believed to be accurate but not guaranteed.

Soil Map

CODE	DESCRIPTION	ACRES	%	CPI	NCCPI	CAP
RuB2	Ruston fine sandy loam, 2 to 5 percent slopes, moderately eroded	1.8	46.27%	-	57	2e
SmD	Smithdale fine sandy loam, 8 to 12 percent slopes	1.61	41.39%	-	73	4e
SmF	Smithdale fine sandy loam, 17 to 35 percent slopes	0.3	7.71%	-	17	7e
SmC	Smithdale fine sandy loam, 5 to 8 percent slopes	0.17	4.37%	-	65	3e



Call me today!

ROBERT SMITH, REALTOR®
 Robert@TomSmithLand.com
 601.990.5070 **office** | 769.257.8139 **cell**

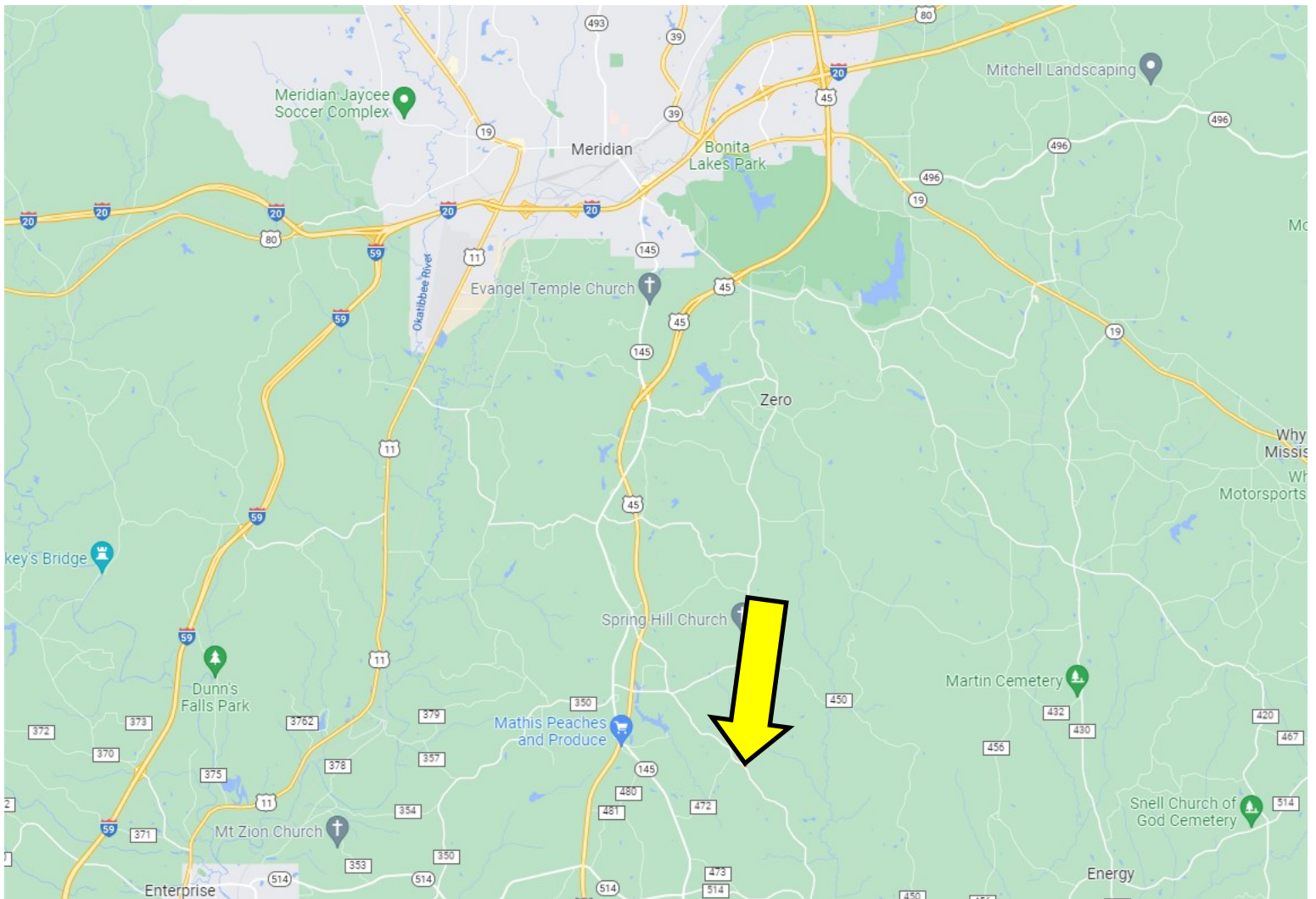


Expect More. Get More.

TomSmithLandandHomes.com

Information is believed to be accurate but not guaranteed.

Directional Map



Google Map Link

Directions from the intersection of MS-19 and US-45 in Meridian, MS: Travel south on US-45, in 11.2 miles, turn left onto Luther Walker Rd, in .7 miles, take a slight right onto Country Rd 470, in 2.0 miles, the property will be on the right.

Call me today!

ROBERT SMITH, REALTOR®
Robert@TomSmithLand.com
601.990.5070 **office** | 769.257.8139 **cell**



Expect More. Get More.

TomSmithLandandHomes.com

Information is believed to be accurate but not guaranteed.