

# Cute House in Cleveland

## Bolivar County, MS



508 University Street Cleveland, MS 38732

\$164,500

Look at this cute home in Cleveland, Bolivar County, MS. This 1,556 square foot home has three bedrooms, two bathrooms that have been remodeled, beautiful brick floors, and original hardwood and stainless steel appliances in this kitchen. This home also has a two-car, covered garage and spacious fenced-in backyard with a brick slab that would make the perfect patio. This home is located within a half mile to Bear Pen Park. Call Tracey Bell today for a private showing, cell (662) 719-4720 or office (662)441-2500.

**Directions from the intersection of Hwy 8 and Hwy 61 Cleveland, MS:** Travel West on Hwy 8 for 0.7 miles, turn left onto N. Victoria Ave and in .8 miles N. Victoria turns right and becomes Avery street. In 361 feet turn onto S. Victoria Ave and then turn right on University Street. In 417 feet the destination will be on the right.



*Call me today!*

**TRACEY BELL**, MANAGING BROKER  
Tracey@TomSmithLand.com  
662.441.2500 **office** | 662.719.4720 **cell**



Expect More. Get More.

**TomSmithLandandHomes.com**

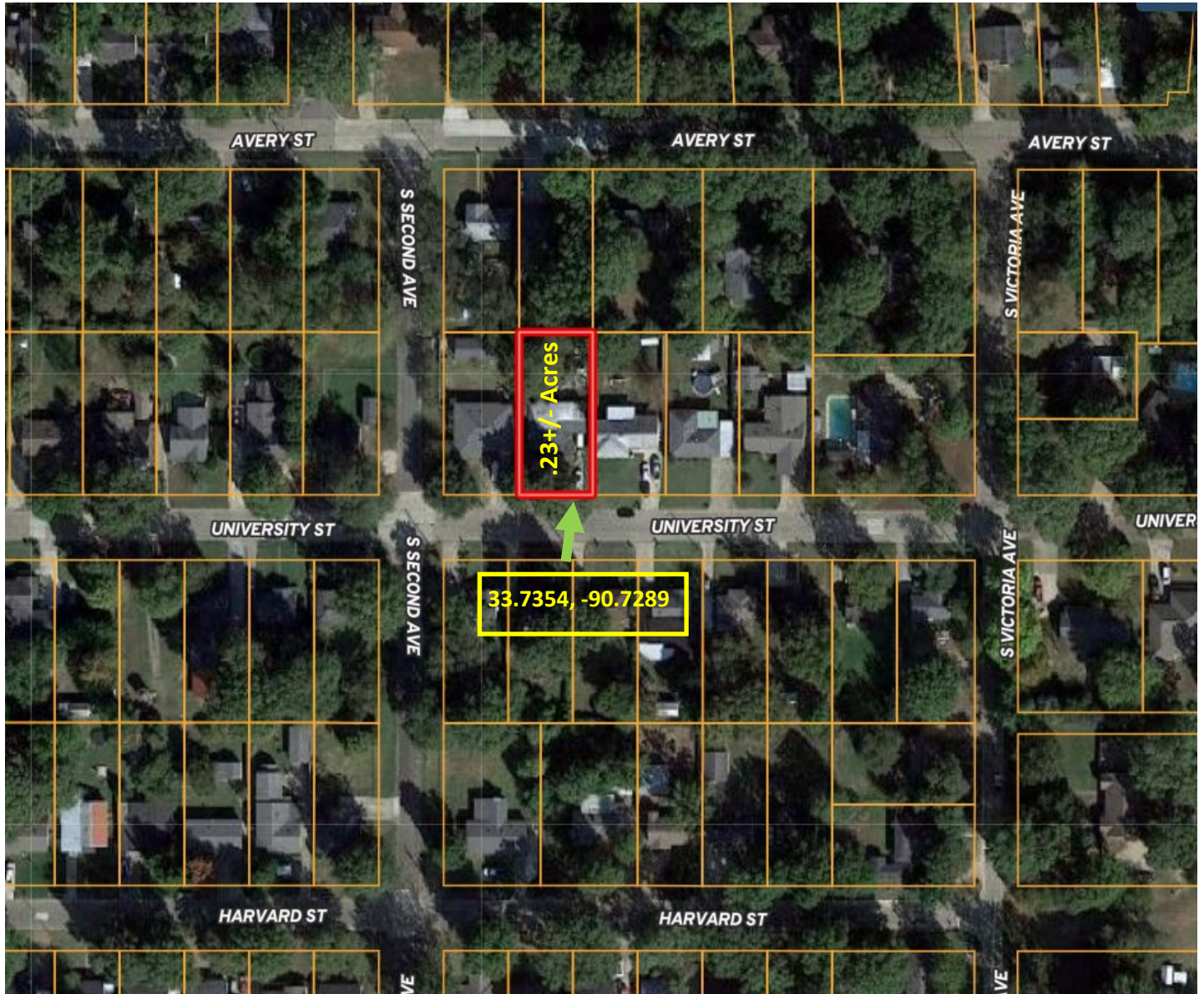
Information is believed to be accurate but not guaranteed.







# AERIAL MAP



[Click for Interactive Map](#)

*Call me today!*

**TRACEY BELL**, MANAGING BROKER  
Tracey@TomSmithLand.com  
662.441.2500 **office** | 662.719.4720 **cell**

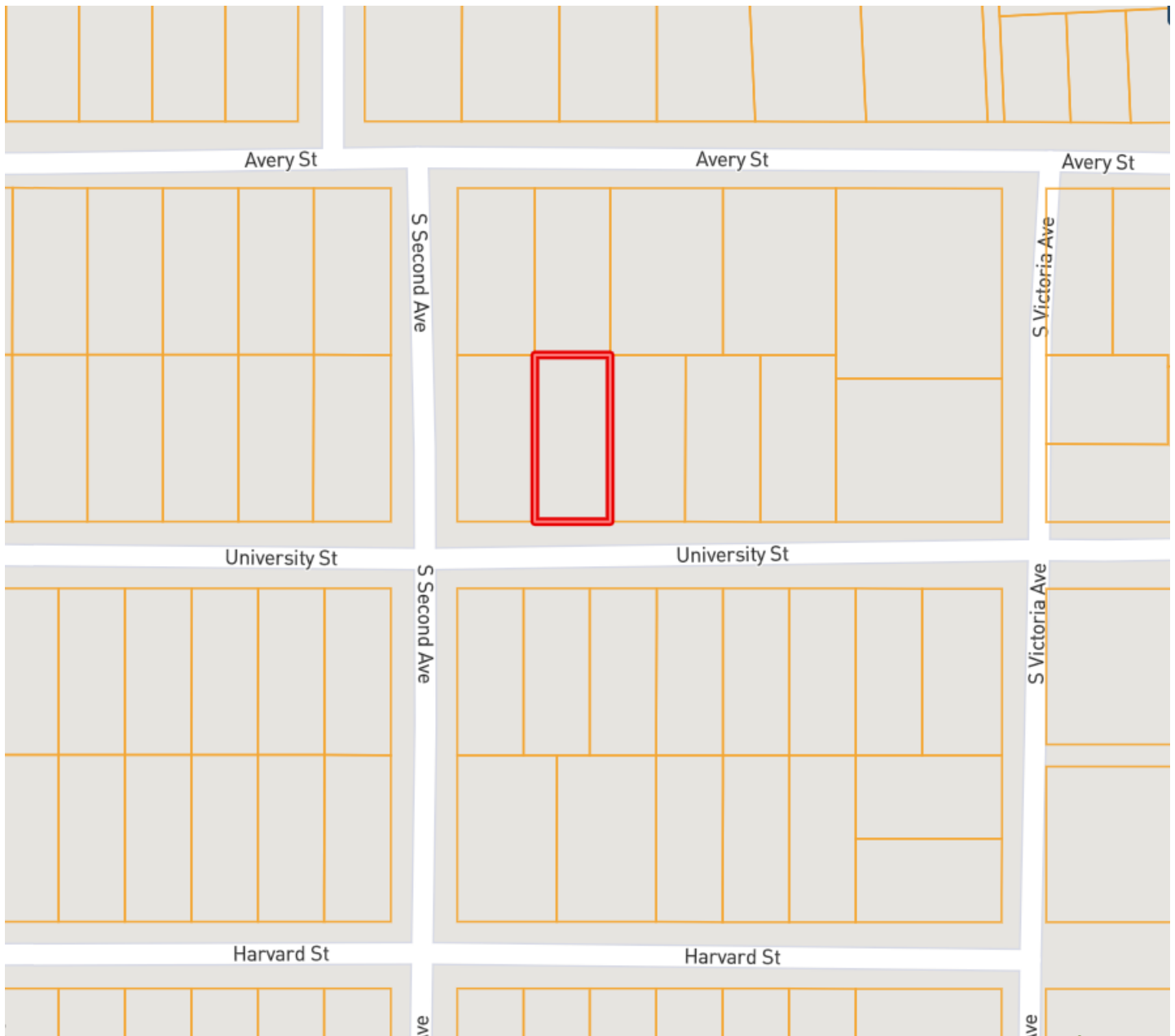


Expect More. Get More.

**TomSmithLandandHomes.com**

Information is believed to be accurate but not guaranteed.

# OWNERSHIP MAP



*Call me today!*

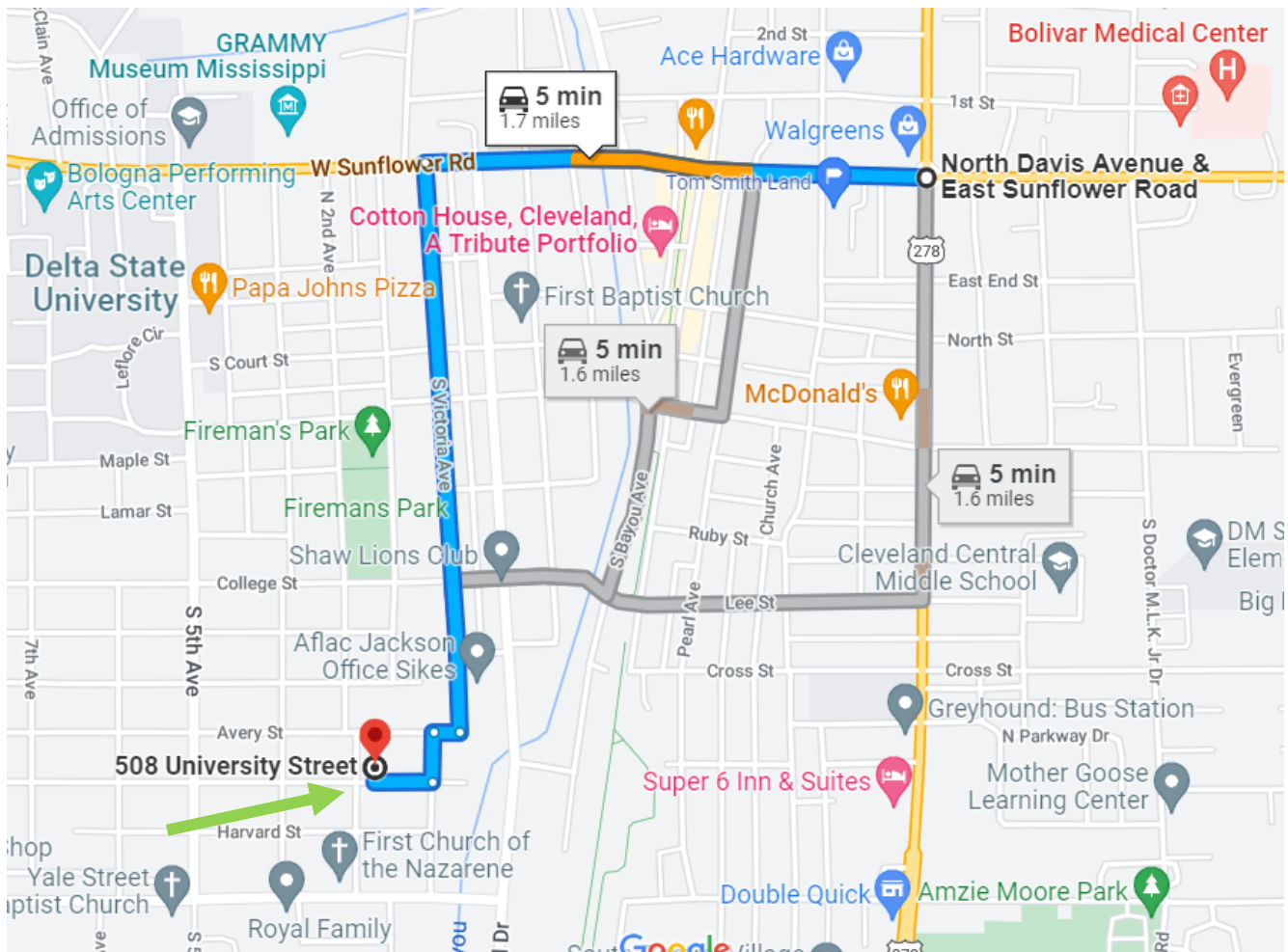
**TRACEY BELL**, MANAGING BROKER  
Tracey@TomSmithLand.com  
662.441.2500 **office** | 662.719.4720 **cell**



**TomSmithLandandHomes.com**

Information is believed to be accurate but not guaranteed.

# DIRECTIONAL MAP



**508 University Street Cleveland, MS 38732**

**Directions from the corner of HWY 61 and HWY 8 in Cleveland, MS:** Travel West Hwy 8 for 0.7 miles, turn left onto N. Victoria Ave and in .8 miles N. Victoria turns right and becomes Avery street. In 361 feet turn onto S. Victoria Ave and then turn right on University Street. In 417 ft the destination will be on the right.

*Call me today!*

**TRACEY BELL**, MANAGING BROKER  
Tracey@TomSmithLand.com  
662.441.2500 **office** | 662.719.4720 **cell**



Expect More. Get More.

**TomSmithLandandHomes.com**

Information is believed to be accurate but not guaranteed.