

# Modern Ranch Style Home

412 McArthur Ave Greenwood, MS

Leflore County

**\$215,000**



*Call me today!*

**ANTHONY STEEN, REALTOR®**  
Anthony@TomSmithLand.com  
662.441.2500 **office** | 662.645.5151 **cell**



**TomSmithLandandHomes.com**

Information is believed to be accurate but not guaranteed.



Welcome to 412 McArthur Avenue Greenwood, MS. A modern ranch style home with a farmhouse touch in Leflore County.

This house has a lot to offer with 3 bedrooms and 2 bathrooms on the north side of Greenwood, just a few blocks over from the Tallahatchie River. The 1900 +/- sqft home has been renovated with a new backsplash in the kitchen, new cabinets and hardware, flooring, and a fresh coat of paint inside and out. In the private fenced in backyard, there is plenty of space to entertain with a covered patio and concrete pad perfect for a fire pit. There is a nice shed in the backyard for storage as well as a storage closet off the covered patio.

McArthur Avenue is located less than 2 miles from downtown Greenwood and 10 minutes from Pillow Academy.



*Call me today!*

**ANTHONY STEEN**, REALTOR®  
Anthony@TomSmithLand.com  
662.441.2500 **office** | 662.645.5151 **cell**



**TomSmithLandandHomes.com**

Information is believed to be accurate but not guaranteed.



*Call me today!*

**ANTHONY STEEN, REALTOR®**  
 Anthony@TomSmithLand.com  
 662.441.2500 office | 662.645.5151 cell



**TomSmithLandandHomes.com**

Information is believed to be accurate but not guaranteed.





*Call me today!*

**ANTHONY STEEN**, REALTOR®  
 Anthony@TomSmithLand.com  
 662.441.2500 **office** | 662.645.5151 **cell**



**TomSmithLandandHomes.com**

Information is believed to be accurate but not guaranteed.





*Call me today!*

**ANTHONY STEEN**, REALTOR®

Anthony@TomSmithLand.com

662.441.2500 **office** | 662.645.5151 **cell**



Expect More. Get More.



**TomSmithLandandHomes.com**

Information is believed to be accurate but not guaranteed.



# Aerial Map



[Click to view interactive map](#)

*Call me today!*

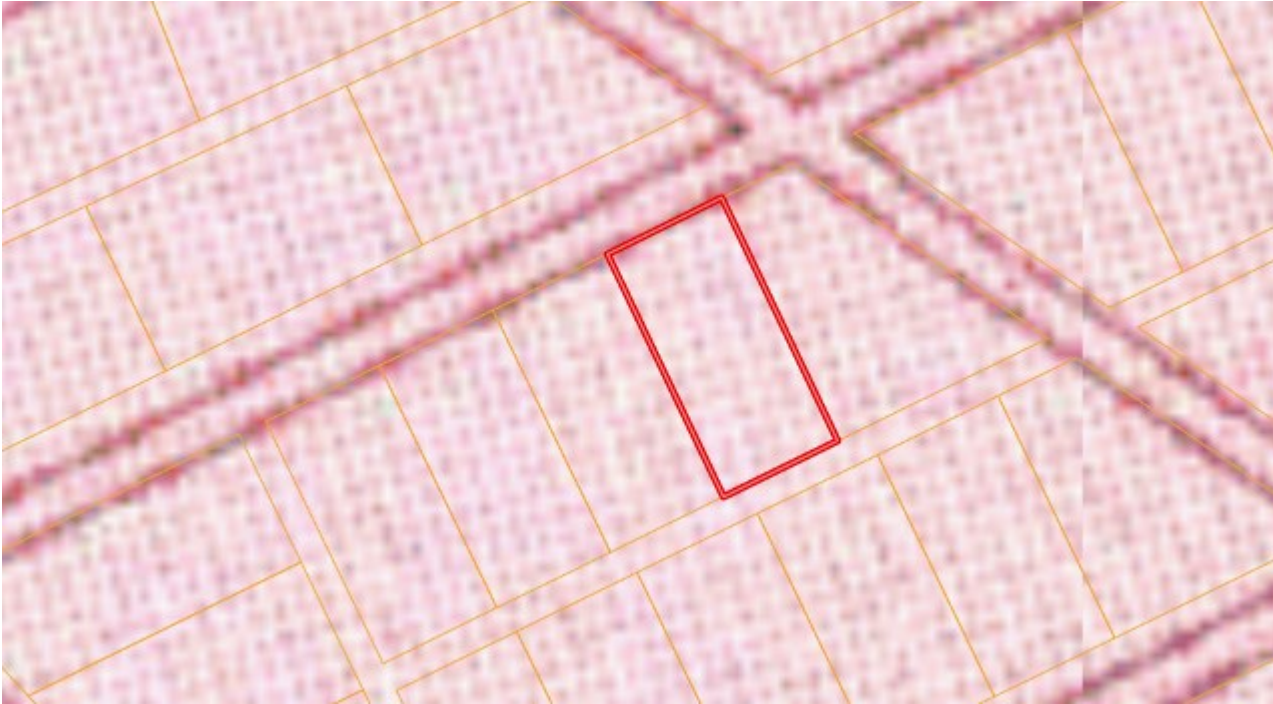
**ANTHONY STEEN**, REALTOR®  
Anthony@TomSmithLand.com  
662.441.2500 **office** | 662.645.5151 **cell**



**TomSmithLandandHomes.com**

Information is believed to be accurate but not guaranteed.

# Topo map



# Ownership Map



*Call me today!*

**ANTHONY STEEN, REALTOR®**  
Anthony@TomSmithLand.com  
662.441.2500 **office** | 662.645.5151 **cell**

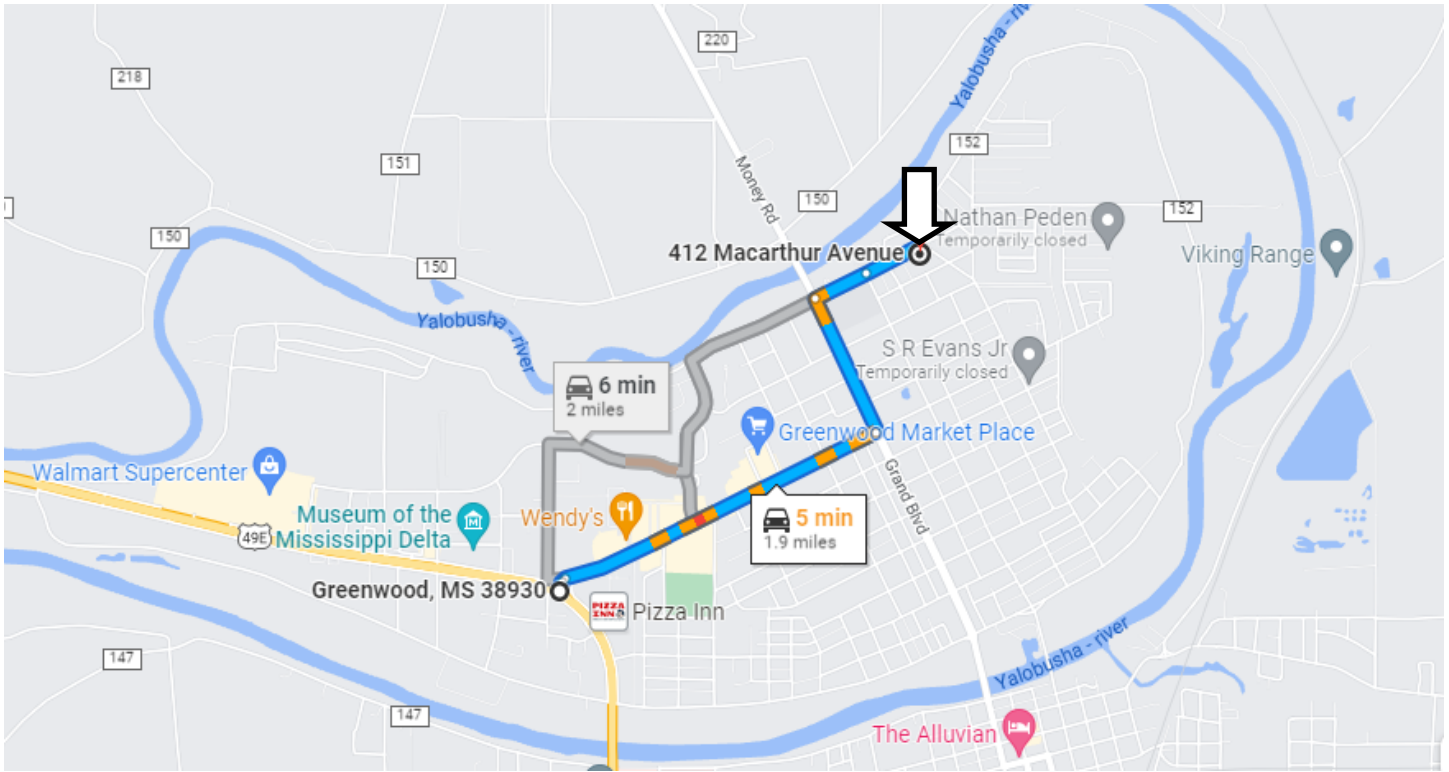


**TomSmithLandandHomes.com**

Information is believed to be accurate but not guaranteed.



# Google Map Directions



## Directions from the Hwy 82 in Greenwood, MS:

Head northeast toward US-49E N/US-82 W. Turn right toward W Park Ave and make a slight right onto W Park Ave. In one mile turn left onto Grand Blvd. Travel .4 of a mile and turn right onto Rosemary Lane. For .2 of a mile. Continue onto McArthur Ave. In .2 of a mile the house will be on your right.

## [Google Map Directions](#)

*Call me today!*

**ANTHONY STEEN, REALTOR®**  
Anthony@TomSmithLand.com  
662.441.2500 **office** | 662.645.5151 **cell**



**TomSmithLandandHomes.com**

Information is believed to be accurate but not guaranteed.