

# 3.97 Acre +/- Residential Lot Marshall County, MS



This Marshall County, MS lot is located just off Hwy 178 on Waites Road between Holly Springs and Lake Center near Interstate 22. It has been partially cleared and is accessed with a written easement. An additional 1.50 acres is available. Zoning permits mobile homes. Call Tom today!!

**Directions:** From the Holly Springs, MS square take Van Dorn Avenue/Hwy 178 east five miles to Waites Road. Turn left and drive ¼ mile to driveway on the left.



*Call me today!*

**TOM WISEMAN**, ASSOCIATE BROKER  
Twiseman@TomSmithLand.com  
662.268.6333 **office** | 662.317.0467 **cell**



## TomSmithLandandHomes.com

Information is believed to be accurate but not guaranteed.



# AERIAL MAP



Click [HERE](#) for interactive link

*Call me today!*

**TOM WISEMAN**, ASSOCIATE BROKER  
Twiseman@TomSmithLand.com  
662.268.6333 **office** | 662.317.0467 **cell**

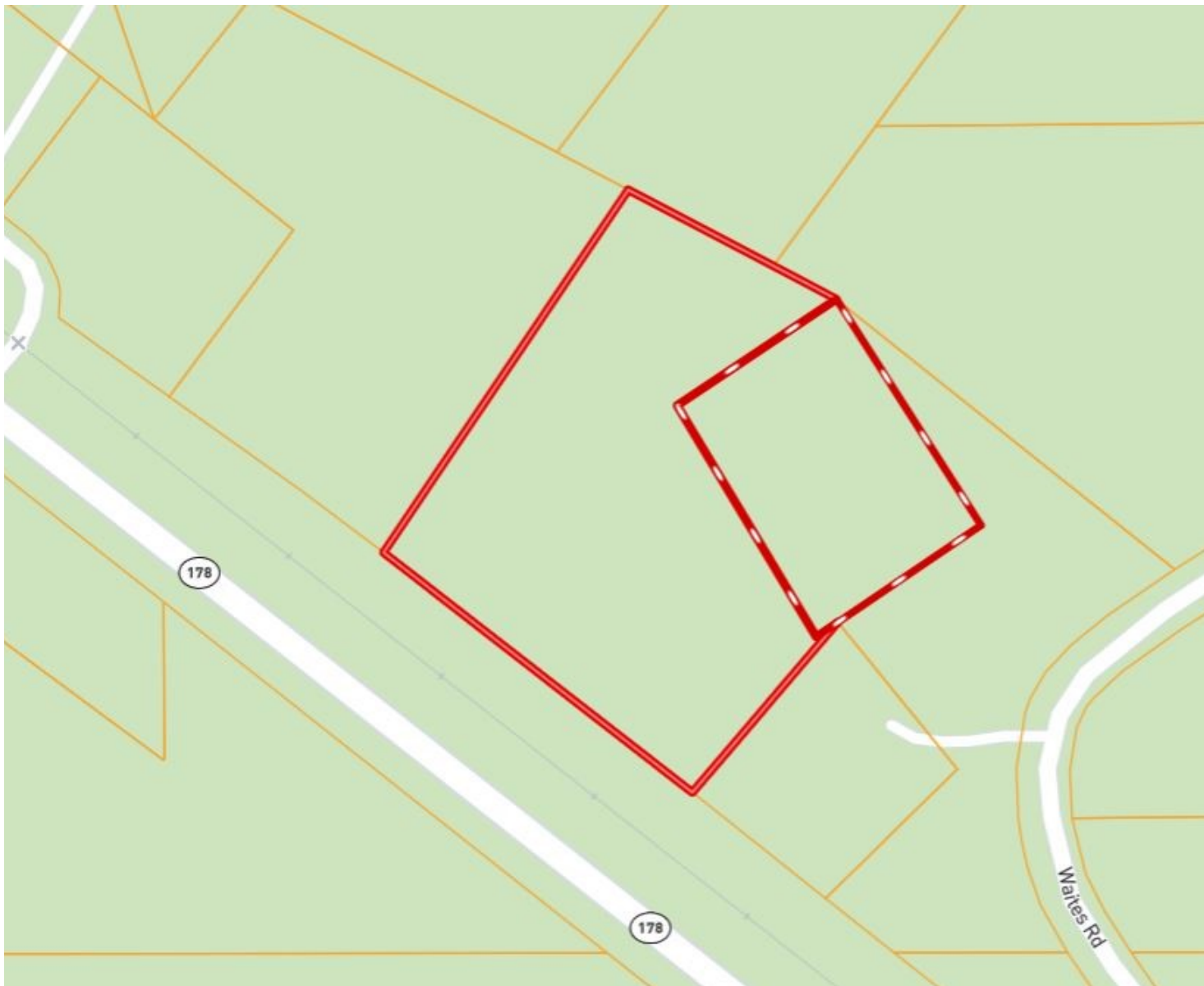


Expect More. Get More.

**TomSmithLandandHomes.com**

Information is believed to be accurate but not guaranteed.

# PROPERTY MAP



*Call me today!*

**TOM WISEMAN**, ASSOCIATE BROKER  
Twiseman@TomSmithLand.com  
662.268.6333 **office** | 662.317.0467 **cell**



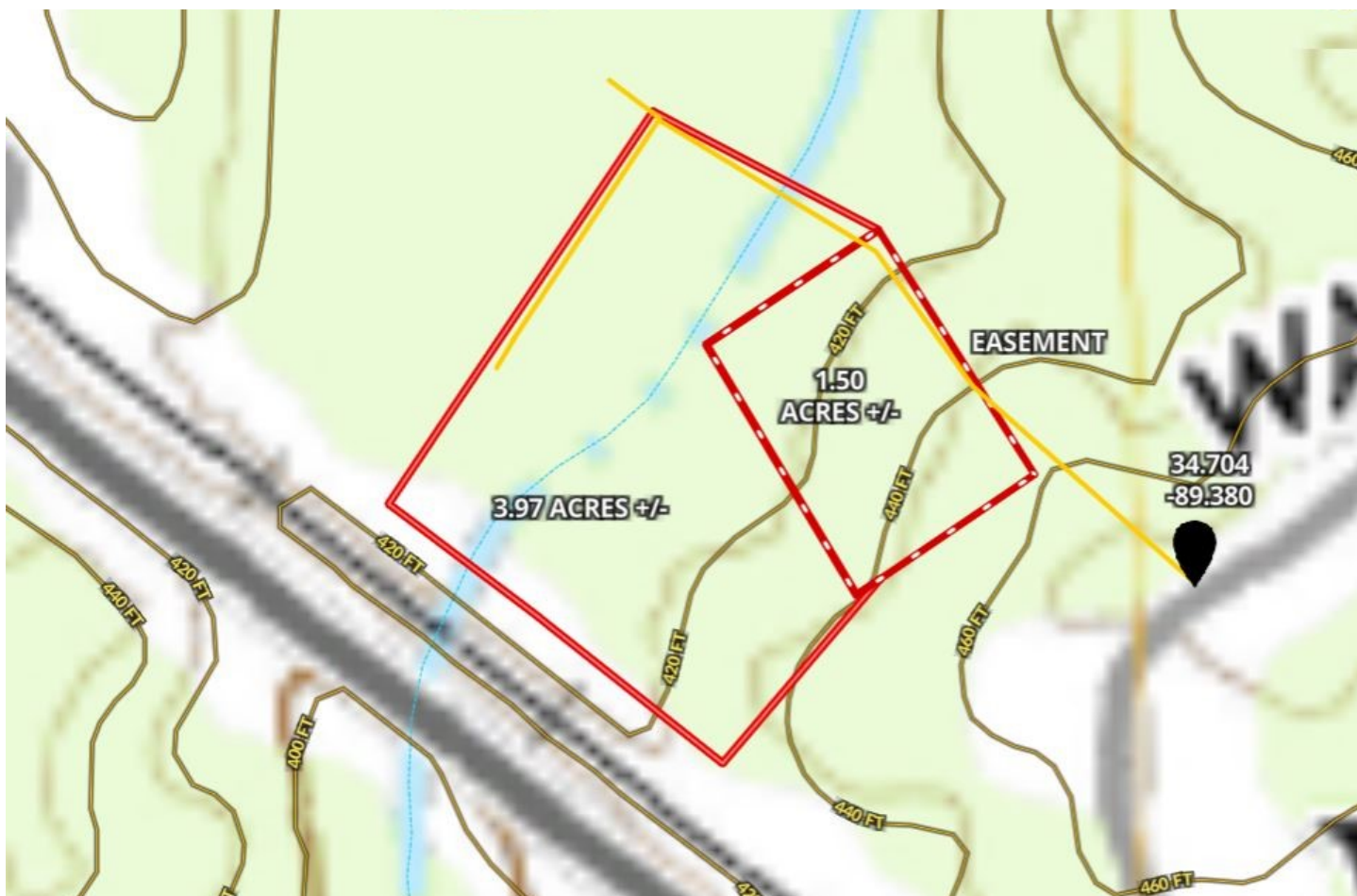
Expect More. Get More.

**TomSmithLandandHomes.com**

Information is believed to be accurate but not guaranteed.



# TOPO MAP



*Call me today!*

**TOM WISEMAN**, ASSOCIATE BROKER  
Twiseman@TomSmithLand.com  
662.268.6333 **office** | 662.317.0467 **cell**



Expect More. Get More.

**TomSmithLandandHomes.com**

Information is believed to be accurate but not guaranteed.

# FLOOD MAP



*Call me today!*

**TOM WISEMAN**, ASSOCIATE BROKER  
Twiseman@TomSmithLand.com  
662.268.6333 **office** | 662.317.0467 **cell**

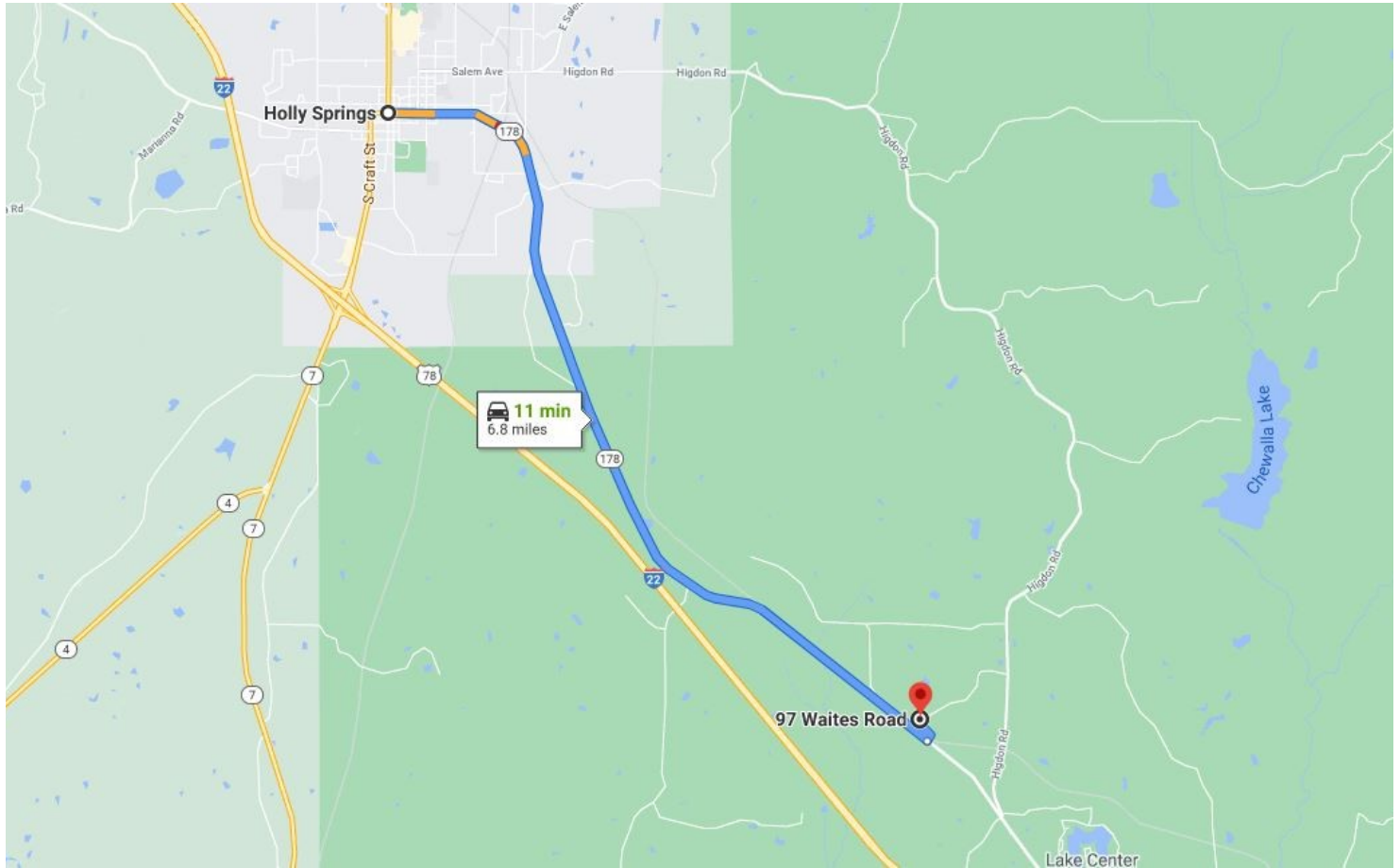


Expect More. Get More.

**TomSmithLandandHomes.com**

Information is believed to be accurate but not guaranteed.

# DIRECTIONAL MAP



**Directions:** From the Holly Springs, MS square take Van Dorn Avenue/Hwy 178 east five miles to Waites Road. Turn left and drive  $\frac{1}{4}$  mile to driveway on the left.

*Call me today!*

**TOM WISEMAN**, ASSOCIATE BROKER  
Twiseman@TomSmithLand.com  
662.268.6333 **office** | 662.317.0467 **cell**



Expect More. Get More.

**TomSmithLandandHomes.com**

Information is believed to be accurate but not guaranteed.