

1.55± Acre Hunting Tract in Marshall County, MS



Who says you can't kill bucks on a small acreage tract? Welcome to your new small acreage hunting tract in Marshall County, MS! This 1.55+/- surveyed acre tract is situated just 10 minutes south of Holly Springs, MS, 15 minutes north of Sardis Lake, and 25 minutes north of Oxford, MS. Rubs were everywhere during the initial inspection! The timber make-up is primarily hardwoods that will provide an abundant food supply for the local wildlife. Utilities are available from the road. Call Kadero Edley today for your private showing!

[Google Maps Link](#)



Call me today!

KADERO EDLEY, REALTOR®
Kadero@TomSmithLand.com
601.898.2772 **office** | 601.488.7000 **cell**



TomSmithLandandHomes.com

Information is believed to be accurate but not guaranteed.



*Call me
today!*

KADERO EDLEY, REALTOR®
Kadero@TomSmithLand.com
601.898.2772 **office** | 601.488.7000 **cell**



Expect More. Get More.

TomSmithLandandHomes.com

Information is believed to be accurate but not guaranteed.



Call me today!



KADERO EDLEY, REALTOR®
Kadero@TomSmithLand.com
601.898.2772 **office** | 601.488.7000 **cell**



Expect More. Get More.

TomSmithLandandHomes.com

Information is believed to be accurate but not guaranteed.

Aerial Map



[Click Here For Interactive Map](#)

*Call me
today!*

KADERO EDLEY, REALTOR®
Kadero@TomSmithLand.com
601.898.2772 **office** | 601.488.7000 **cell**

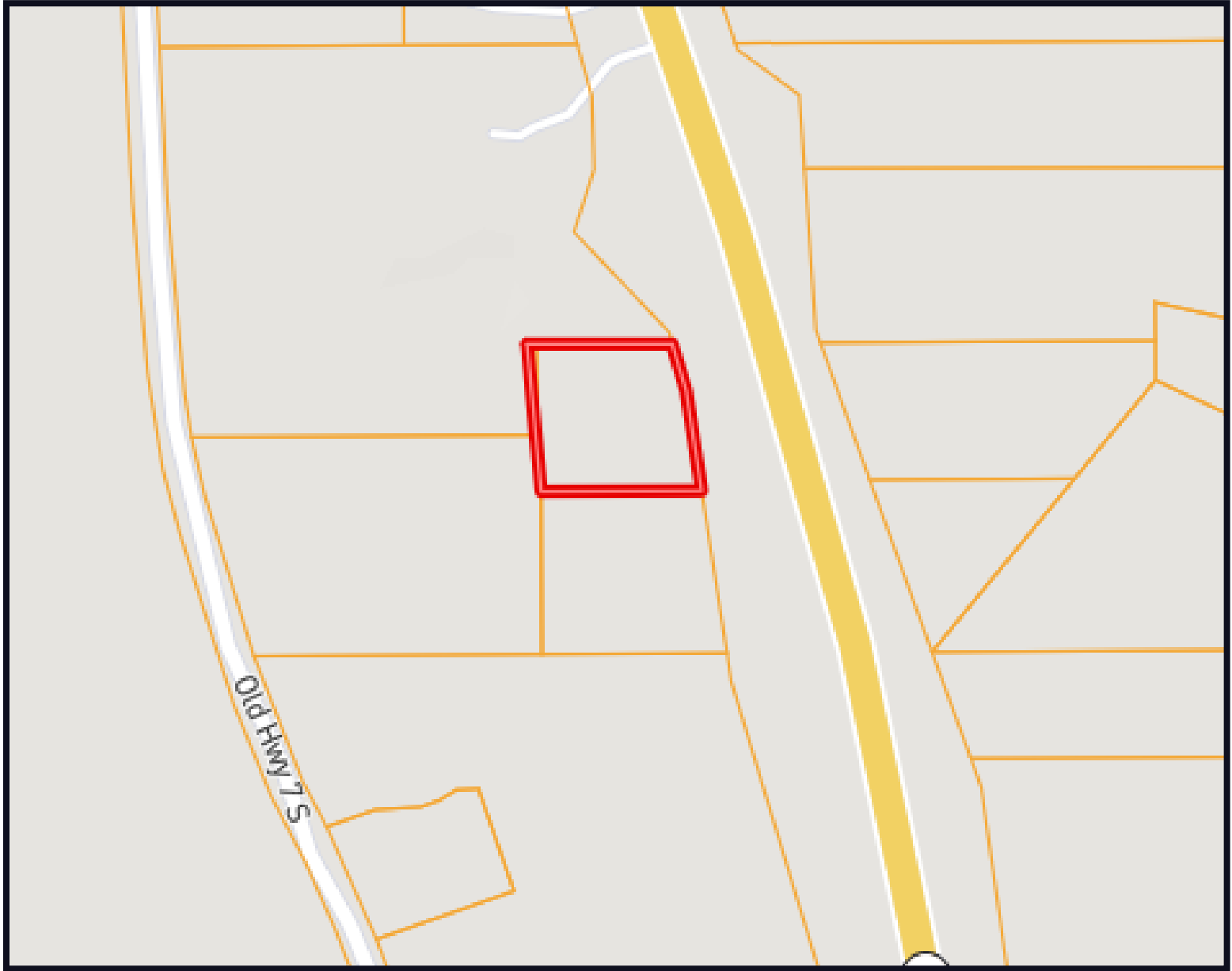


Expect More. Get More.

TomSmithLandandHomes.com

Information is believed to be accurate but not guaranteed.

Ownership Map



*Call me
today!*

KADERO EDLEY, REALTOR®
Kadero@TomSmithLand.com
601.898.2772 **office** | 601.488.7000 **cell**

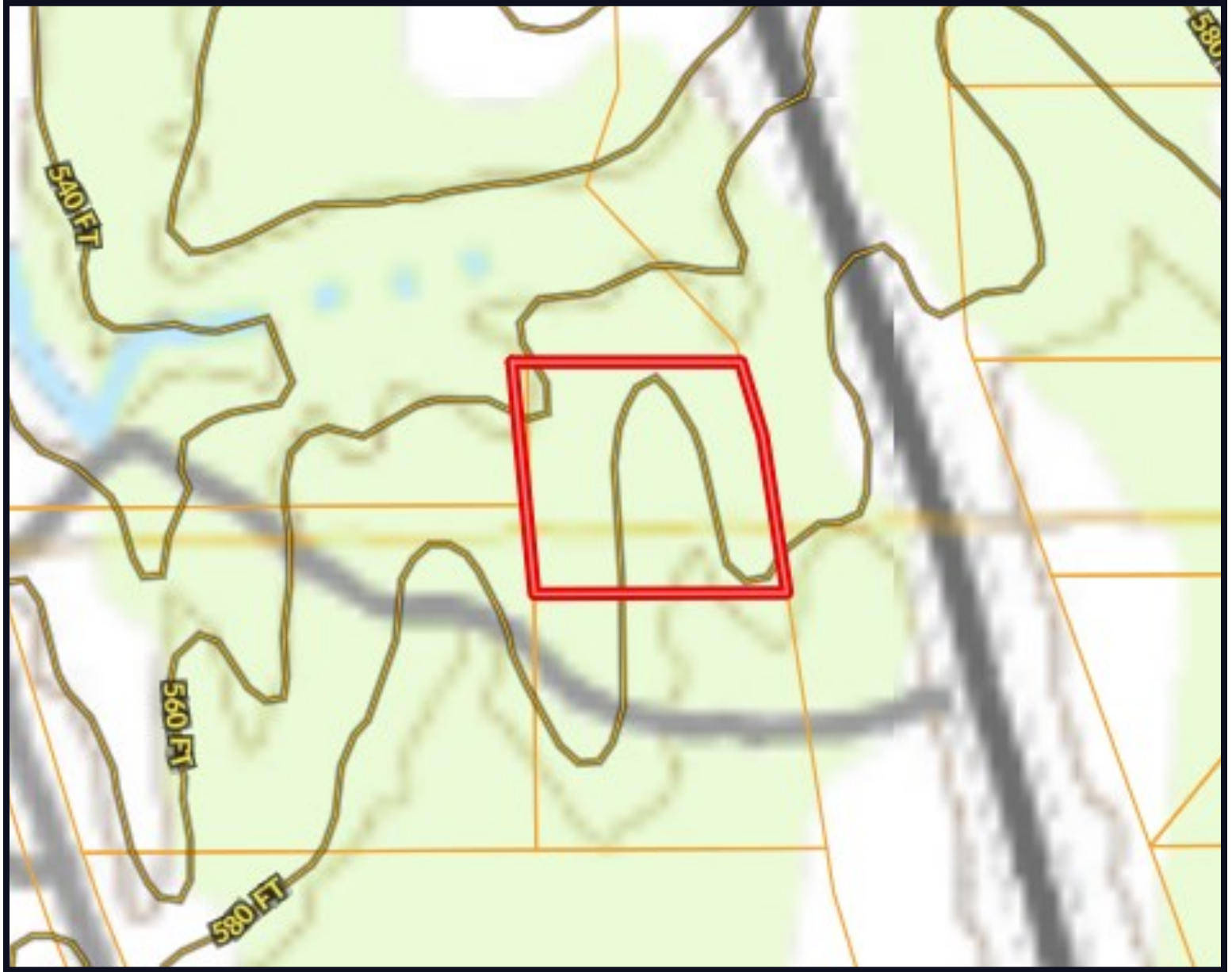


Expect More. Get More.

TomSmithLandandHomes.com

Information is believed to be accurate but not guaranteed.

Topographic Map



*Call me
today!*

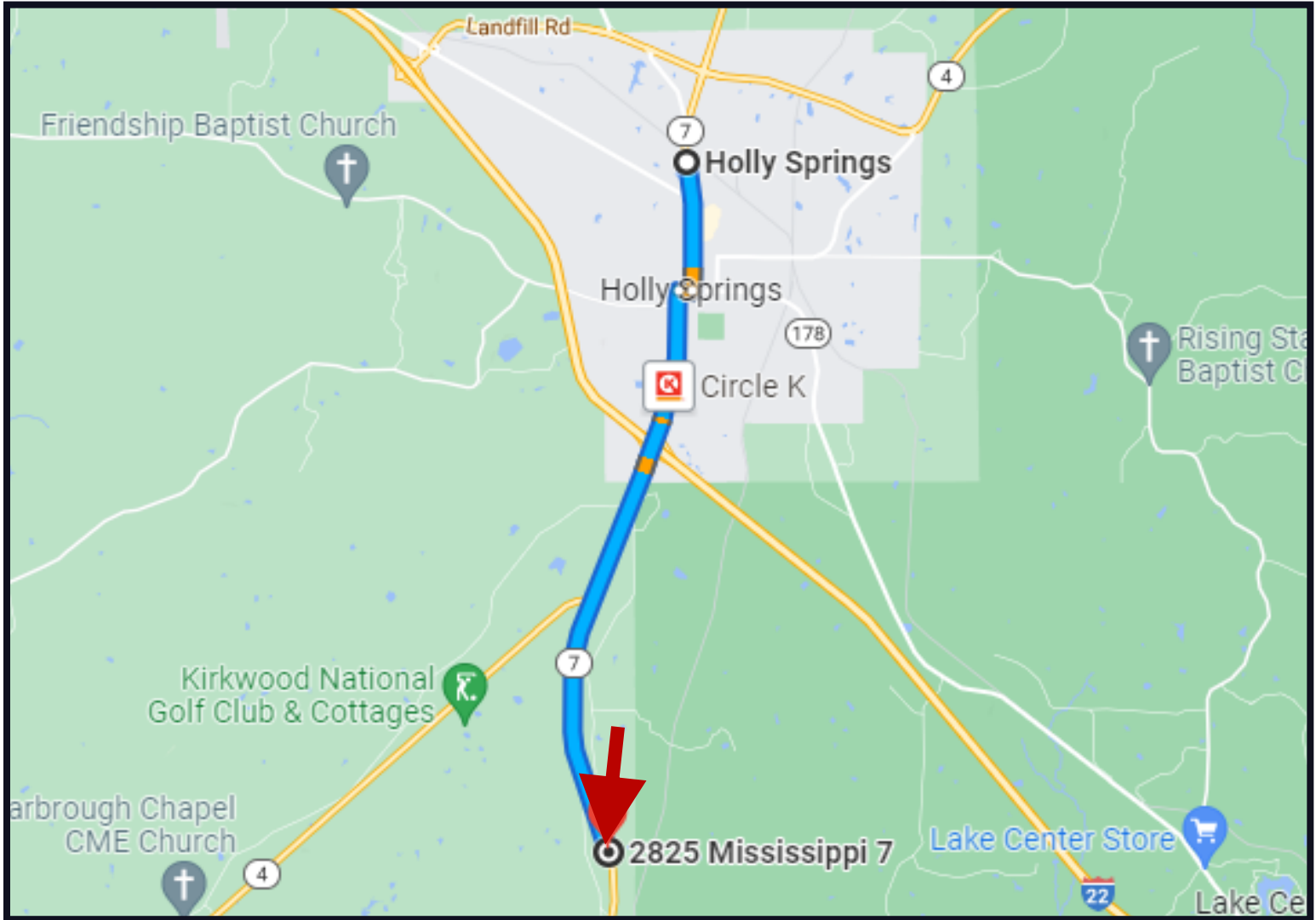
KADERO EDLEY, REALTOR®
Kadero@TomSmithLand.com
601.898.2772 **office** | 601.488.7000 **cell**



TomSmithLandandHomes.com

Information is believed to be accurate but not guaranteed.

Directional Map



Direction from MS-7 S in Holly Springs, MS: Travel south toward MS-7 S toward Clay St for 1.1 miles. Then turn right onto W Van Dorn Ave and travel for 0.1 miles. Turn left onto MS-7 S/S Craft St. Continue on MS-7 S for 5.2 miles and the property will be on your left.

[Google Maps Link](#)



Call me today!

KADERO EDLEY, REALTOR®
Kadero@TomSmithLand.com
601.898.2772 **office** | 601.488.7000 **cell**



TomSmithLandandHomes.com

Information is believed to be accurate but not guaranteed.