

# 1.55± Acre Homesite in Marshall County, MS



Have you been searching for a place to build your dream home in a great location? Welcome to your new 1.55± acre homesite in Marshall County, MS! This 1.55± surveyed acre tract is situated just ten minutes south of Holly Springs, MS, fifteen minutes north of Sardis Lake, and twenty-five minutes north of Oxford, MS. A well will need to be installed for water supply, the city of Holly Springs provides electricity, and either a septic or water treatment plant will need to be installed for sewage. Mobile homes are allowed, and with a little TLC plus dirt work, this could be your new country home! Blueprints for new construction are available.

Call Kadero Edley today for your private showing!

[Google Maps Link](#)



*Call me today!*

**KADERO EDLEY**, REALTOR®  
Kadero@TomSmithLand.com  
601.898.2772 **office** | 601.488.7000 **cell**



**TomSmithLandandHomes.com**

Information is believed to be accurate but not guaranteed.



*Call me today!*

**KADERO EDLEY, REALTOR®**  
Kadero@TomSmithLand.com  
601.898.2772 **office** | 601.488.7000 **cell**



Expect More. Get More.

**TomSmithLandandHomes.com**

Information is believed to be accurate but not guaranteed.



*Call me today!*

**KADERO EDLEY, REALTOR®**  
Kadero@TomSmithLand.com  
601.898.2772 office | 601.488.7000 cell



Expect More. Get More.

**TomSmithLandandHomes.com**

Information is believed to be accurate but not guaranteed.

# Aerial Map



[Click Here For Interactive Map](#)

*Call me today!*

**KADERO EDLEY**, REALTOR®  
Kadero@TomSmithLand.com  
601.898.2772 office | 601.488.7000 cell



Expect More. Get More.

[TomSmithLandandHomes.com](http://TomSmithLandandHomes.com)

Information is believed to be accurate but not guaranteed.

# Ownership Map



*Call me  
today!*

**KADERO EDLEY**, REALTOR®  
Kadero@TomSmithLand.com  
601.898.2772 **office** | 601.488.7000 **cell**

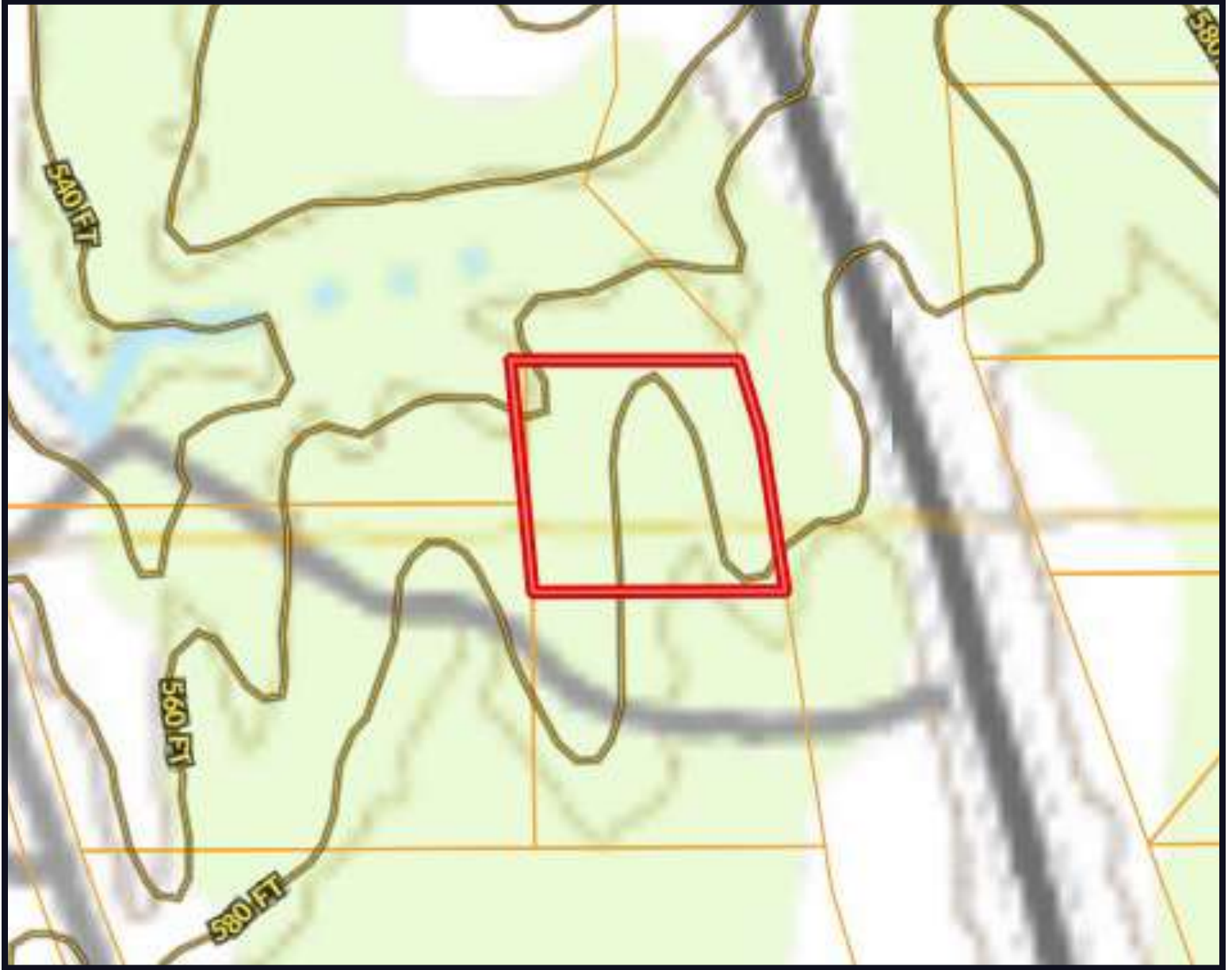


Expect More. Get More.

**TomSmithLandandHomes.com**

Information is believed to be accurate but not guaranteed.

# Topographic Map



*Call me  
today!*

**KADERO EDLEY**, REALTOR®  
Kadero@TomSmithLand.com  
601.898.2772 **office** | 601.488.7000 **cell**

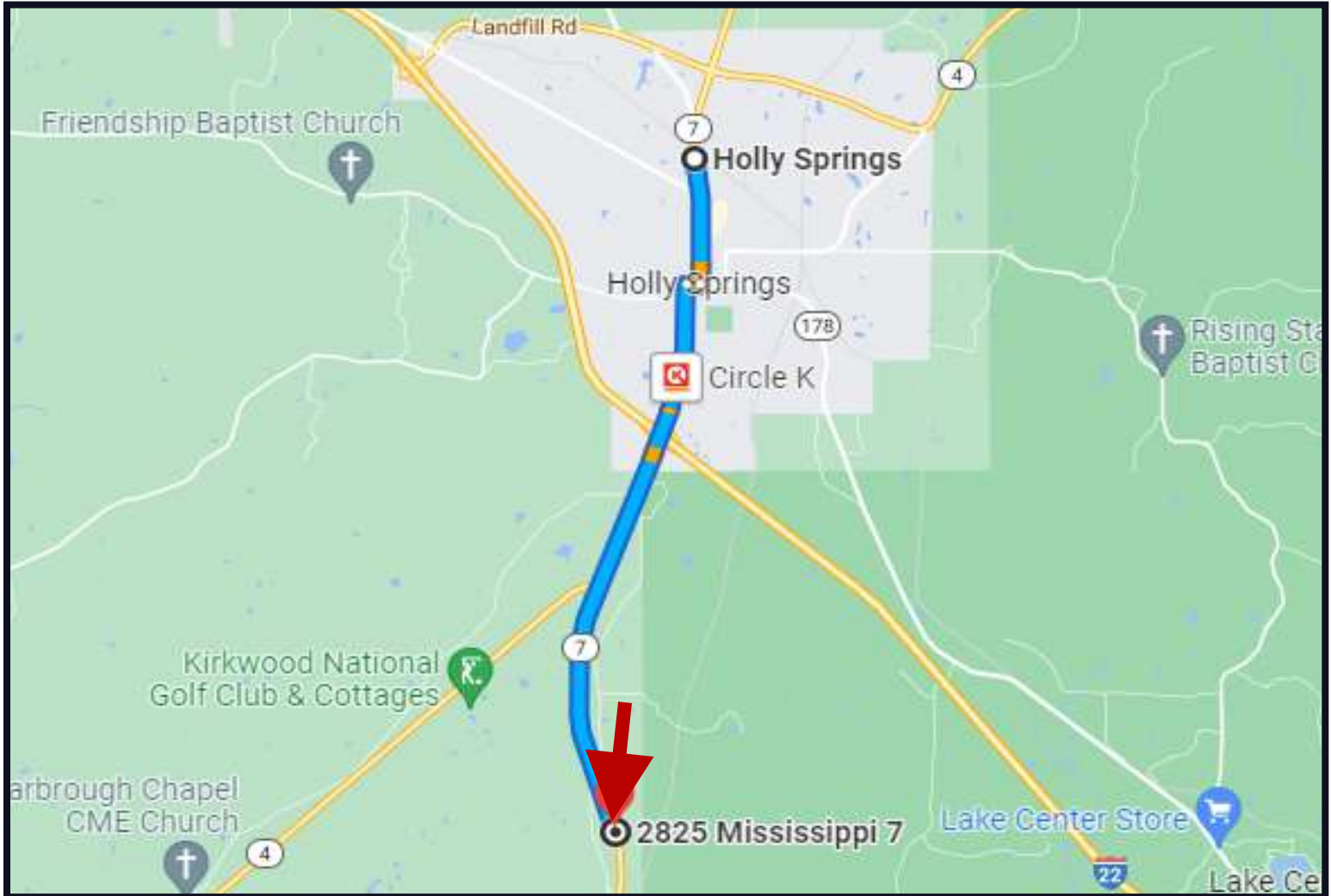


Expect More. Get More.

**TomSmithLandandHomes.com**

Information is believed to be accurate but not guaranteed.

# Directional Map



Direction from MS-7 S in Holly Springs, MS: Travel south toward MS-7 S toward Clay St for 1.1 miles. Then turn right onto W Van Dorn Ave and travel for 0.1 miles. Turn left onto MS-7 S/S Craft St. Continue on MS-7 S for 5.2 miles and the property will be on your left.

[Google Maps Link](#)



*Call me today!*

**KADERO EDLEY, REALTOR®**  
Kadero@TomSmithLand.com  
601.898.2772 office | 601.488.7000 cell



**TomSmithLandandHomes.com**

Information is believed to be accurate but not guaranteed.