



MORGAN WATKINS  
ENGINEERING CO., INC.  
BOX 575  
ATHENS, TENNESSEE 37303

OWNER:  
GENERAL DEVELOPMENT CORP.  
TENNESSEE  
111 SOUTH BAYSHORE DRIVE  
MIAMI, FLORIDA 33131

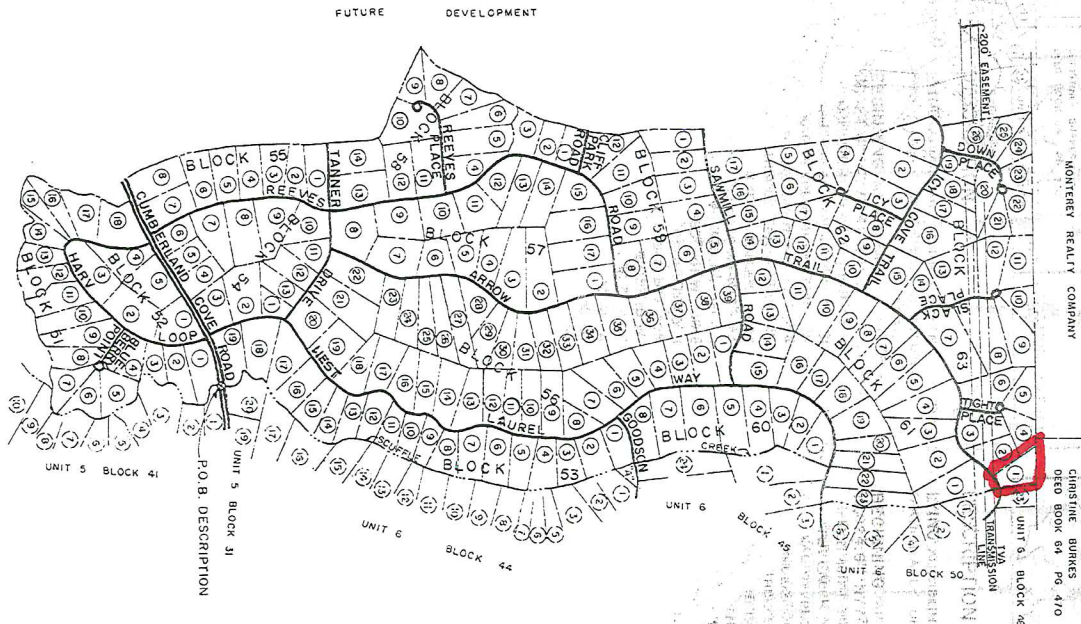


**CUMBERLAND COVE**  
U.S. HWY. NO. 70 NORTH, FOURTH CIVIL DISTRICT, PUTNAM COUNTY, TENN.

UNIT 7 INDEX  
DATE: SEPTEMBER 16, 1955  
SHEET: 00  
DRAWING NO.: B109 - 7 - 1

TOTAL ACRES 967.4

**UNIT 7**



### DESCRIPTION

LYING AND BEING IN THE FOURTH CIVIL DISTRICT, PUTNAM COUNTY, TENNESSEE, AND MORE PARTICULARLY DESCRIBED AS FOLLOWS:

BEGINNING AT A POINT IN THE CENTER LINE OF SCUFFLE CREEK AND CUMBERLAND COVE ROAD, 19,024.6' N77°42'W FROM USGS MARKER IS-34.5, MAYLAND GUANOYANQUE, TENNESSEE, THENCE WITH BLOCK 41, UNIT 5, CUMBERLAND COVE, DOWNSTREAM WITH THE MEANDERS OF SCUFFLE CREEK, A CHORD OF 507.20' 208.6' 6' THENCE LEAVING SCUFFLE CREEK WITH GENERAL DEVELOPMENT CORP. N77°48'W 194.0' TO A POINT ON TOP OF BLUFF, THENCE WITH THE MEANDERS OF TOP OF BLUFF AND GENERAL DEVELOPMENT CORP. S46°21'W 174.7' 1,920.1' THENCE LEAVING TOP OF BLUFF WITH GENERAL DEVELOPMENT CORP. S46°21'W 174.7' TO A POINT IN THE CENTER OF AN UNNAMED CREEK THENCE UP STREAM WITH THE MEANDERS OF SAID CREEK A CHORD OF 114° 33' E 1,352.2' THENCE LEAVING CREEK WITH GENERAL DEVELOPMENT CORP. N08°19'W 376.6' TO A POINT IN THE NORTH R.O.M. OF CUMBERLAND COVE ROAD THENCE WITH SAID ROAD S83°41'W 30.8' THENCE ON A CURVE TO THE LEFT WITH A CHORD OF 573°-22'-30'W 397.26' A DISTANCE OF 399.5' WITH A RADIUS OF 1,110.0' TO A POINT THENCE LEAVING SAID ROAD WITH GENERAL DEVELOPMENT CORP. THE FOLLOWING BEARINGS AND DISTANCES N26°56'W 263.2' N07°00'W 287.1' N03°16'W 966.6' N15°09'E 402.0' N11°01'E 156.9' N03°17'E 289.2' N04°26'W 516.3' TO A POINT IN CENTER OF COVE CREEK THENCE DOWNSTREAM WITH THE MEANDERS OF SAID CREEK A CHORD OF N62°29'W 1,043.2' TO A POINT IN THE CENTER OF ICY CREEK THENCE UP STREAM WITH THE MEANDERS OF SAID CREEK A CHORD OF N20°02'E 3,538.2' TO AN IRON PILE IN THE SOUTH R.O.M. OF SAMMILL ROAD THENCE N08°22'E 60.0' TO A POINT IN THE NORTH R.O.M. OF SAMMILL ROAD THENCE WITH SAID ROAD S81°38'E 294.7' TO AN IRON PILE THENCE LEAVING SAMMILL ROAD WITH GENERAL DEVELOPMENT CORP. THE FOLLOWING BEARINGS AND DISTANCES N01°25'W 1,864.3' N10°09'W 553.4' TO AN IRON PILE IN THE SOUTH R.O.M. OF ICY CREEK THENCE N36°53'W 60.0' TO A POINT IN THE NORTH R.O.M. OF ICY CREEK THENCE WITH THE NORTH R.O.M. OF ICY CREEK TRAIL N53°07'E 15.1' THENCE ON A CURVE TO THE RIGHT WITH A CHORD OF N70°16'E 285.03' A DISTANCE OF 289.3' WITH A RADIUS OF 483.3' TO A POINT THENCE LEAVING ICY CREEK TRAIL WITH GENERAL DEVELOPMENT CORP. N02°55'W 1,122.1' TO A CORNER IN THE LINE OF MONTGOMERY REALTY COMPANY THENCE WITH MONTGOMERY REALTY COMPANY S83°47'E 3,844.0' TO A CONCRETE MARKER A CORNER WITH GLENVIEW PARKS THENCE WITH BURGESS S84°44'E 513.0' TO A POINT IN THE CENTER OF AN UNNAMED CREEK, THENCE UPSTREAM WITH THE MEANDERS OF AN UNNAMED CREEK AND BLOCKS 43 & 50, UNIT 6, CUMBERLAND COVE, A CHORD OF S00°22'E 2,250.2' TO A POINT, THENCE S82°51'W 343.4' TO A POINT, THENCE WITH BLOCK 45, UNIT 6, CUMBERLAND COVE S23°09'W 711.5' TO A POINT IN THE CENTER OF SCUFFLE CREEK, THENCE DOWNSTREAM WITH THE MEANDERS OF SCUFFLE CREEK AND BLOCKS 44 & 45, UNIT 6, BLOCK 51, UNIT 5, CUMBERLAND COVE A CHORD OF S12°18'W 6,350.3' TO THE POINT OF BEGINNING, CONTAINING 967.4 ACRES MORE OR LESS.

BLOCK 51	18	TRACTS
BLOCK 52	5	TRACTS
BLOCK 53	19	TRACTS
BLOCK 54	13	TRACTS
BLOCK 55	8	TRACTS
BLOCK 56	39	TRACTS
BLOCK 57	17	TRACTS
BLOCK 58	14	TRACTS
BLOCK 59	12	TRACTS
BLOCK 60	8	TRACTS
BLOCK 61	24	TRACTS
BLOCK 62	17	TRACTS
BLOCK 63	26	TRACTS

TOTAL 220 TRACTS







MORGAN WATKINS  
ENGINEERING CO., INC.  
BOX 575  
ATHENS, TENNESSEE 37303

OWNER:  
GENERAL DEVELOPMENT CORP.  
OF TENNESSEE  
111 SOUTH BAYSHORE DRIVE  
MIAMI, FLORIDA 33131

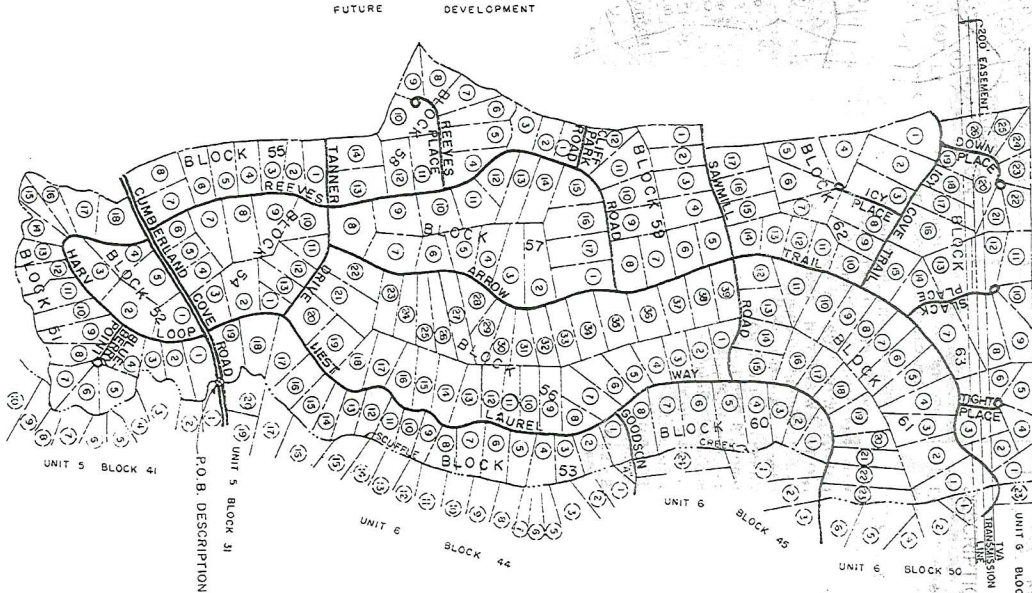


**CUMBERLAND COVE**  
U.S. HWY. NO. 70 NORTH, FOURTH CIVIL DISTRICT, PUTNAM COUNTY, TENN.

UNIT 7 INDEX  
DATE: SEPTEMBER 16, 1955  
SHEET: 00  
DRAWING NO.: 8109 - 7 - 1

TOTAL ACRES 967.4

# UNIT 7



MONTREY REALTY COMPANY  
CHRISTINE BURNS  
DEED BOOK 64 PG. 470

## DESCRIPTION

LYING AND BEING IN THE FOURTH CIVIL DISTRICT, PUTNAM COUNTY, TENNESSEE, AND MORE PARTICULARLY DESCRIBED AS FOLLOWS:

BEGINNING AT A POINT IN THE CENTERLINE OF SCUFFLE CREEK AND CUMBERLAND COVE ROAD, 19.024.6' N77°42'W FROM USGS MARKER 18-34-5, MAYLAND GUARDIANVILLE, TENNESSEE, THENCE WITH BLOCK 41, UNIT 5, CUMBERLAND COVE, DOWNSTREAM WITH THE MEANDERS OF SCUFFLE CREEK, A CHORD OF 507°20'W 2,086.6', THENCE LEAVING SCUFFLE CREEK WITH GENERAL DEVELOPMENT CORP. N77°48'W 194.0', TO A POINT ON THE CHORD OF 584°49'W 1,920.1', THENCE LEAVING TOP OF BLUFF WITH GENERAL DEVELOPMENT CORP. S48°21'W 174.7', TO A POINT IN THE CENTER OF AN UNNAMED CREEK THENCE UP STREAM WITH THE MEANDERS OF SAID CREEK A CHORD OF N14°33'E 1,352.2', THENCE LEAVING CREEK WITH GENERAL DEVELOPMENT CORP. N06°19'W 370.6', TO A POINT IN THE NORTH ROW OF CUMBERLAND COVE ROAD THENCE WITH SAID ROAD S83°41'W 30.6' THENCE ON A CURVE TO THE LEFT WITH A CHORD OF 573°22'30"W 397.26' A DISTANCE OF 399.5' WITH A RADIUS OF 1,110.0' TO A POINT THENCE LEAVING SAID ROAD WITH GENERAL DEVELOPMENT CORP. THE FOLLOWING BEARINGS AND DISTANCES N26°56'W 263.2', N07°00'W 287.1', N03°16'W 966.6', N15°09'E 402.0', N11°01'E 156.9', N03°17'E 289.2', N04°26'W 516.3' TO A POINT IN CENTER OF COVE CREEK THENCE DOWNSTREAM WITH THE MEANDERS OF SAID CREEK A CHORD OF N62°29'W 1,043.2' TO A POINT IN THE CENTER OF ICY CREEK THENCE UP STREAM WITH THE MEANDERS OF SAID CREEK A CHORD OF N20°02'E 3,538.2', TO AN IRON PIN IN THE SOUTH ROW OF SAMMILL ROAD THENCE N08°22'E 60.0', TO A POINT IN THE NORTH ROW OF SAMMILL ROAD THENCE WITH SAID ROAD S81°38'E 294.1', TO AN IRON PIN THENCE LEAVING SAMMILL ROAD WITH GENERAL DEVELOPMENT CORP. THE FOLLOWING BEARINGS AND DISTANCES N01°25'W 1,864.3', N10°09'W 553.4' TO AN IRON PIN IN THE SOUTH ROW OF ICY CREEK THENCE N36°53'W 60.0', TO A POINT IN THE NORTH ROW OF ICY CREEK THENCE WITH THE NORTH ROW OF ICY CREEK TRAIL N53°07'E 15.1' THENCE ON A CURVE TO THE RIGHT WITH A CHORD OF N70°16'E 285.03' A DISTANCE OF 289.3' WITH A RADIUS OF 483.3' TO A POINT THENCE LEAVING ICY CREEK TRAIL WITH GENERAL DEVELOPMENT CORP. N02°35'W 1,122.1' TO A CORNER IN THE LINE OF MONTREY REALTY COMPANY THENCE WITH MONTREY REALTY COMPANY S83°47'E 3,544.0' TO A CONCRETE MARKER A COMMON CORNER WITH GLENVIEW PARKS THENCE WITH BURNS S84°47'E 513.0' TO A POINT IN THE CENTER OF AN UNNAMED CREEK, THENCE UPSTREAM WITH THE MEANDERS OF AN UNNAMED CREEK AND BLOCKS 48 & 50, UNIT 6, CUMBERLAND COVE, A CHORD OF S00°22'E 2,250.2' TO A POINT, THENCE S82°51'W 343.4' TO A POINT, THENCE WITH BLOCK 45, UNIT 6, CUMBERLAND COVE S23°09'W 711.5' TO A POINT IN THE CENTER OF SCUFFLE CREEK, THENCE DOWNSTREAM WITH THE MEANDERS OF SCUFFLE CREEK AND BLOCKS 44 & 45, UNIT 6, BLOCK 31, UNIT 5, CUMBERLAND COVE, A CHORD OF S12°18'W 6,350.3' TO THE POINT OF BEGINNING, CONTAINING 967.4 ACRES MORE OR LESS.

BLOCK 51	18	TRACTS
BLOCK 52	5	TRACTS
BLOCK 53	19	TRACTS
BLOCK 54	13	TRACTS
BLOCK 55	8	TRACTS
BLOCK 56	39	TRACTS
BLOCK 57	17	TRACTS
BLOCK 58	14	TRACTS
BLOCK 59	12	TRACTS
BLOCK 60	8	TRACTS
BLOCK 61	24	TRACTS
BLOCK 62	17	TRACTS
BLOCK 63	26	TRACTS

TOTAL 220 TRACTS

