

SNOPES FARM



46± ACRES IN WARREN COUNTY, MS

\$490,000

- Beautiful Hunting or Fishing Camp
- Serene Two Bedroom One Bath Cabin
- Established Road System
- 15± Acre Stocked Lake
- Metal Storage Building
- Hardwood Timber
- Only 30 minutes from both Vicksburg, MS and Clinton, MS



Directions From Interstate 20 and Henry Lake Rd. in Warren County, MS: Take exit 15 towards Flowers. Merge onto Henry Lake Rd. and travel 2.2 miles. Turn right onto Freetown Rd. and travel 1.1 miles. Turn left onto Youngtown Rd. and travel for 2 miles. The property will be on your left.

[GOOGLE MAP LINK](#)



Call me today!

BRUCE WEST, REALTOR®
Bruce@TomSmithLand.com
662.441.2500 **office** | 662.873.3007 **cell**



TomSmithLandandHomes.com

Information is believed to be accurate but not guaranteed.

Do you need a great Get-A-Way? Well, here it is! Snopes Farm is a beautiful, scenic 46+/- acre property in Warren County, MS, and will provide you with that place. You begin to relax as you drive to the property through the large hardwood timber. When you arrive at the cabin, you immediately take in the view of the gorgeous lake. This 15+/- acre fully stocked lake is teeming with bass and bream. The lower portion of the cabin is fully screened-in, with plenty of room for entertaining. You can sit back and watch the football game or sit and look out over the water and the woods. This cabin is literally on the water!

The upper portion features a large deck with a fantastic view, and the living area features a cozy living room with a den, kitchen, two bedrooms, and one bath. Satellite TV, as well as the internet, is available, so you don't miss anything. The owner is leaving the furnishings so that you can move on in. There is a metal storage building so you can store your gear. An ATV, lawnmower, and various tools and implements will remain. There is a boat house with two boat lifts so you can access the lake to enjoy the great fishing available. The hardwood timber surrounding the property provides another great view and a home for deer and small game. Snopes Farm is just a fantastic place to relax from the daily grind and relax. You have plenty of space to visit with family and friends or take in the view and enjoy the solitude. You have to see it to appreciate the beauty of this place entirely. Call Bruce today for your private showing!



Call me today!

BRUCE WEST, REALTOR *
Bruce@TomSmithLand.com
662.441.2500 **office** | 662.873.3007 **cell**



TomSmithLandandHomes.com

Information is believed to be accurate but not guaranteed.



Call me today!

BRUCE WEST, REALTOR*
Bruce@TomSmithLand.com
662.441.2500 **office** | 662.873.3007 **cell**



Expect More. Get More.



TomSmithLandandHomes.com

Information is believed to be accurate but not guaranteed.



Call me today!

BRUCE WEST, REALTOR*
Bruce@TomSmithLand.com
662.441.2500 **office** | 662.873.3007 **cell**



Expect More. Get More.



TomSmithLandandHomes.com

Information is believed to be accurate but not guaranteed.



Call me today!

BRUCE WEST, REALTOR®
Bruce@TomSmithLand.com
662.441.2500 **office** | 662.873.3007 **cell**



TomSmithLandandHomes.com

Information is believed to be accurate but not guaranteed.



Call me today!

BRUCE WEST, REALTOR®
Bruce@TomSmithLand.com
662.441.2500 office | 662.873.3007 cell



Expect More. Get More.



TomSmithLandandHomes.com

Information is believed to be accurate but not guaranteed.



Call me today!

BRUCE WEST, REALTOR®
Bruce@TomSmithLand.com
662.441.2500 office | 662.873.3007 cell



TomSmithLandandHomes.com

Information is believed to be accurate but not guaranteed.

AERIAL MAP



[Click HERE for an Interactive Map](#)

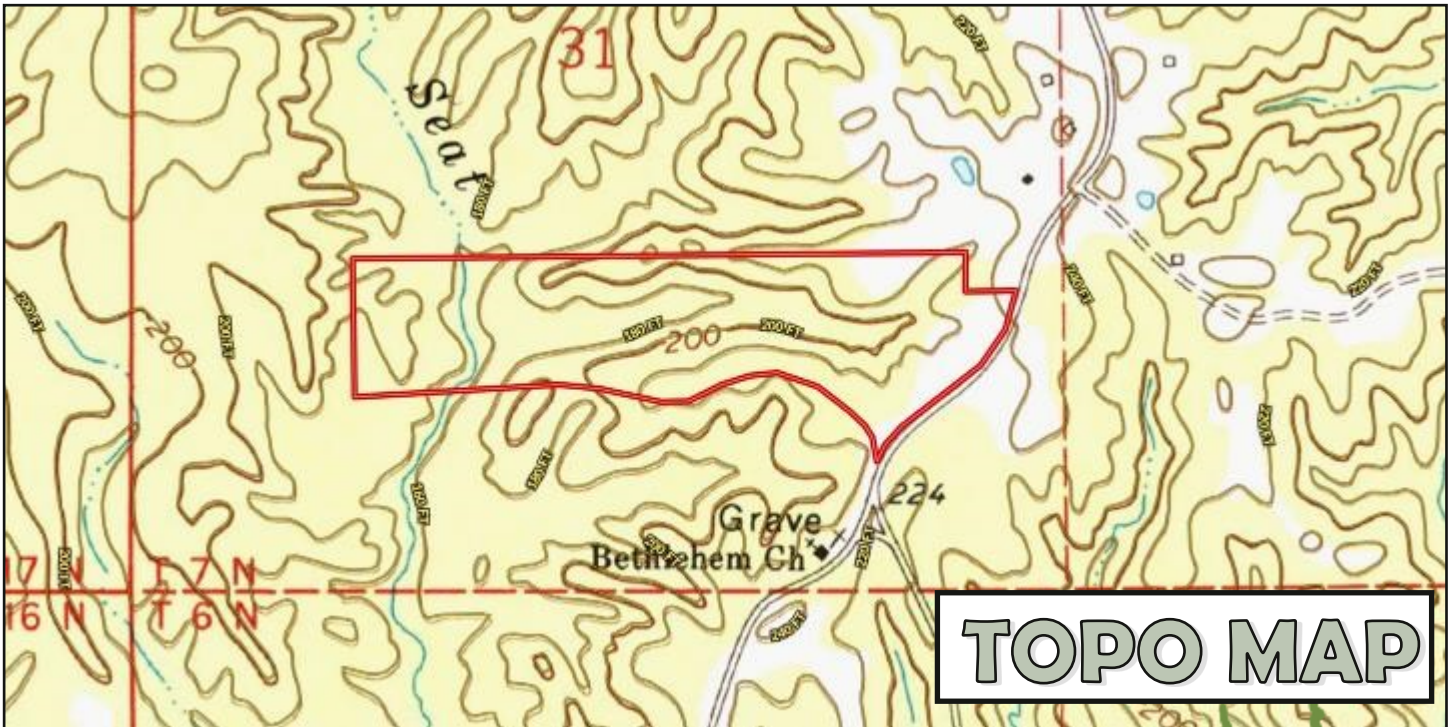
Call me today!

BRUCE WEST, REALTOR*
Bruce@TomSmithLand.com
662.441.2500 **office** | 662.873.3007 **cell**



TomSmithLandandHomes.com

Information is believed to be accurate but not guaranteed.



Call me today!

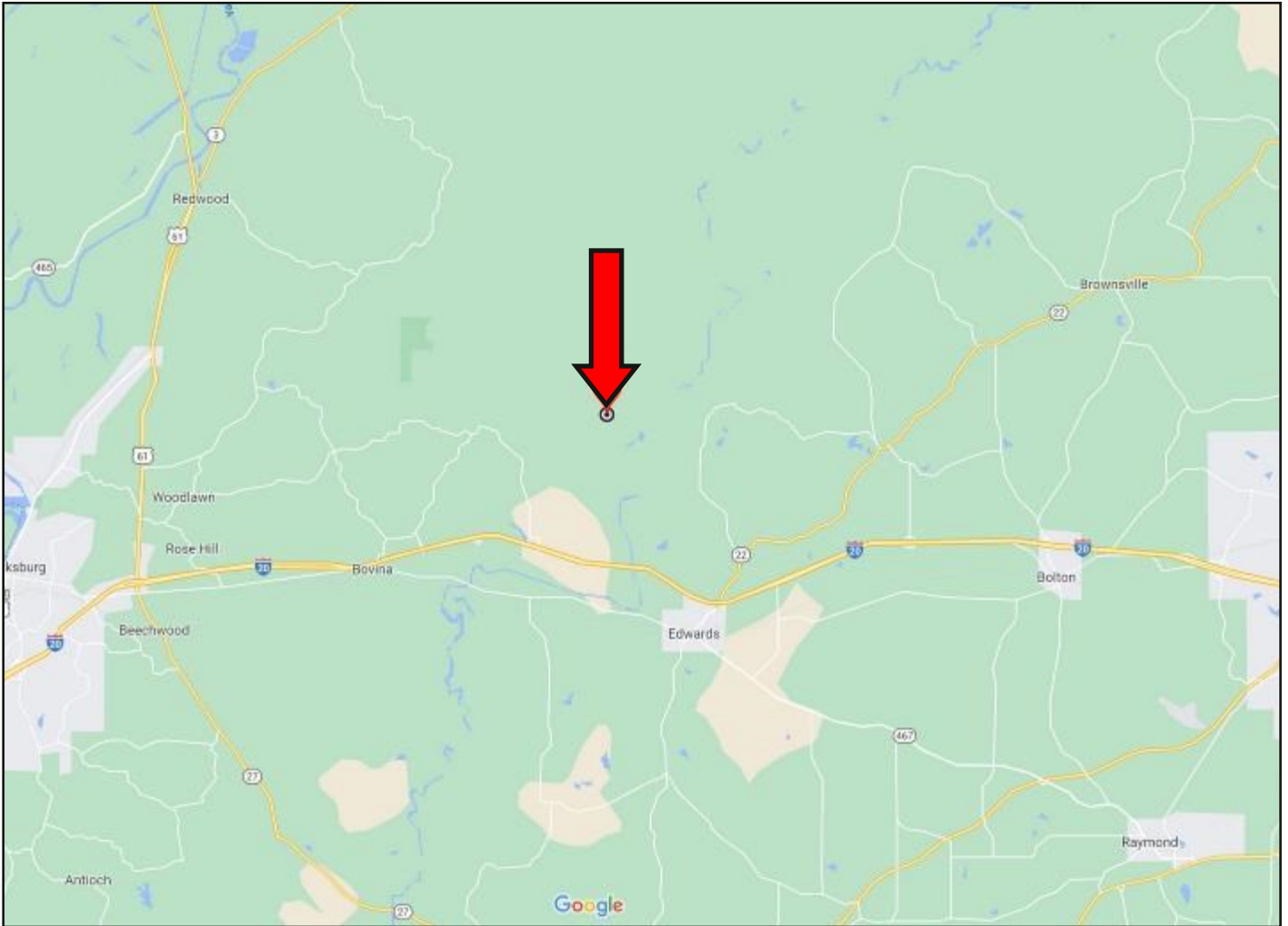
BRUCE WEST, REALTOR[®]
Bruce@TomSmithLand.com
662.441.2500 **office** | 662.873.3007 **cell**



TomSmithLandandHomes.com

Information is believed to be accurate but not guaranteed.

DIRECTIONAL MAP



Directions From Interstate 20 and Henry Lake Rd. in Warren County, MS: Take exit 15 towards Flowers. Merge onto Henry Lake Rd. and travel 2.2 miles. Turn right onto Freetown Rd. and travel 1.1 miles. Turn left onto Youngtown Rd. and travel for 2 miles. The property will be on your left. [GOOGLE MAP LINK](#)



Call me today!

BRUCE WEST, REALTOR®
Bruce@TomSmithLand.com
662.441.2500 office | 662.873.3007 cell



TomSmithLandandHomes.com

Information is believed to be accurate but not guaranteed.