

Great Lot For a Home

1+/- Acre In Kemper County

\$6,500



This Kemper County property is one that you don't want to miss. With an acre of land you have plenty of room for a home, but not too much to manage. This is a great opportunity to get out of town and have a little place of your own. The property is wooded with mostly pines and a power line running through the back portion. Mobile homes are allowed and utilities are available.

Call Travis Smith today to schedule your private viewing!

DIRECTIONS FROM INTERSECTION HWY 16 AND HWY 39 DeKalb, MS: Head south on Main Ave toward Chestnut St for 0.7 miles then Continue onto MS-39 S/Church St for 2.2 miles then the location will be on the left.

[GOOGLE MAP LINK](#)



Call me today!

TRAVIS SMITH, REALTOR®
Travis@TomSmithLand.com
601.898.2772 **office** | 601.600.0428 **cell**



TomSmithLandandHomes.com

Information is believed to be accurate but not guaranteed.



*Call me
today!*

TRAVIS SMITH, REALTOR®
 Travis@TomSmithLand.com
 601.898.2772 **office** | 601.600.0428 **cell**

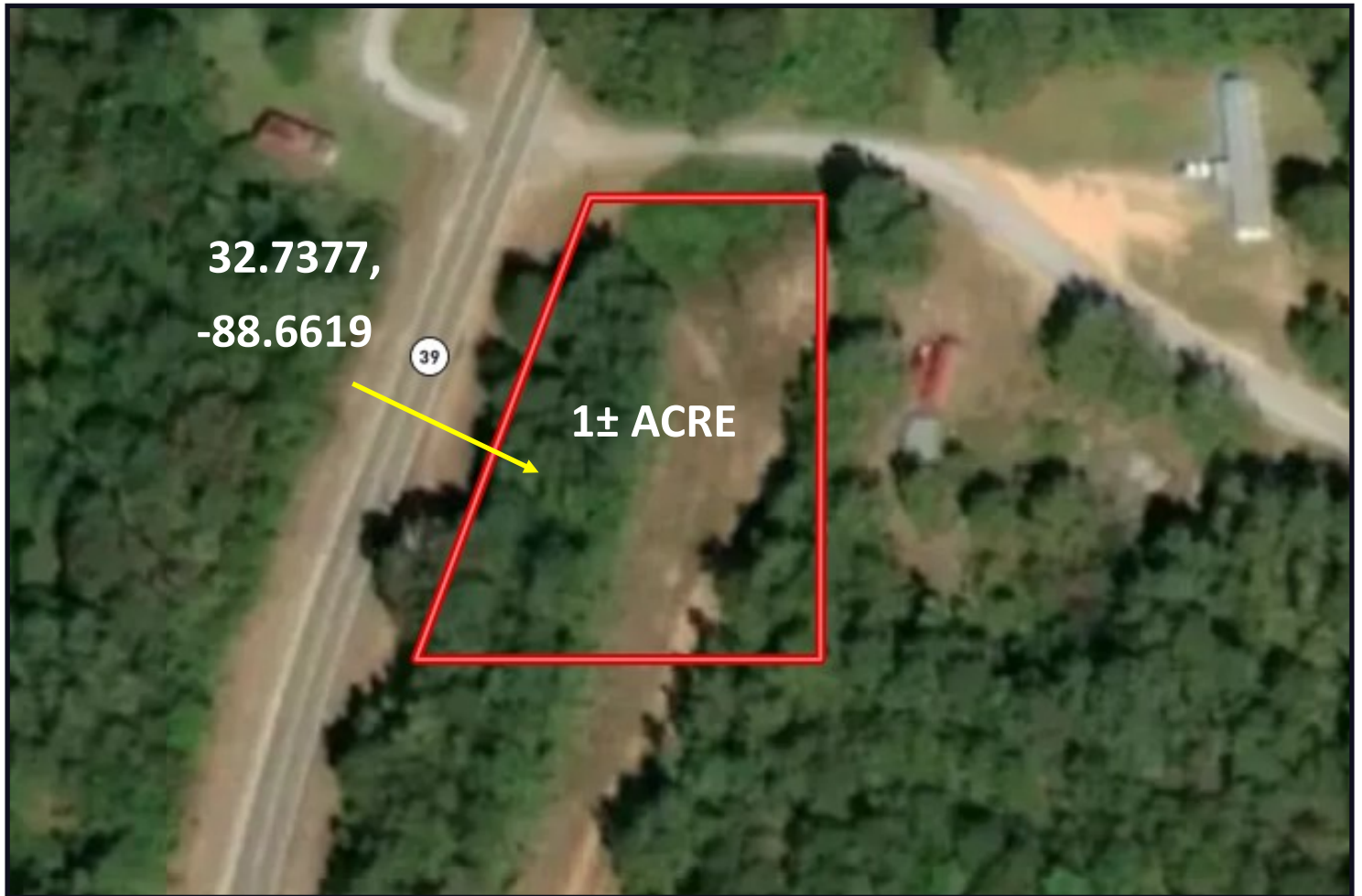


Expect More. Get More.

TomSmithLandandHomes.com

Information is believed to be accurate but not guaranteed.

AERIAL MAP



CLICK [HERE](#) FOR AN INTERACTIVE MAP

*Call me
today!*

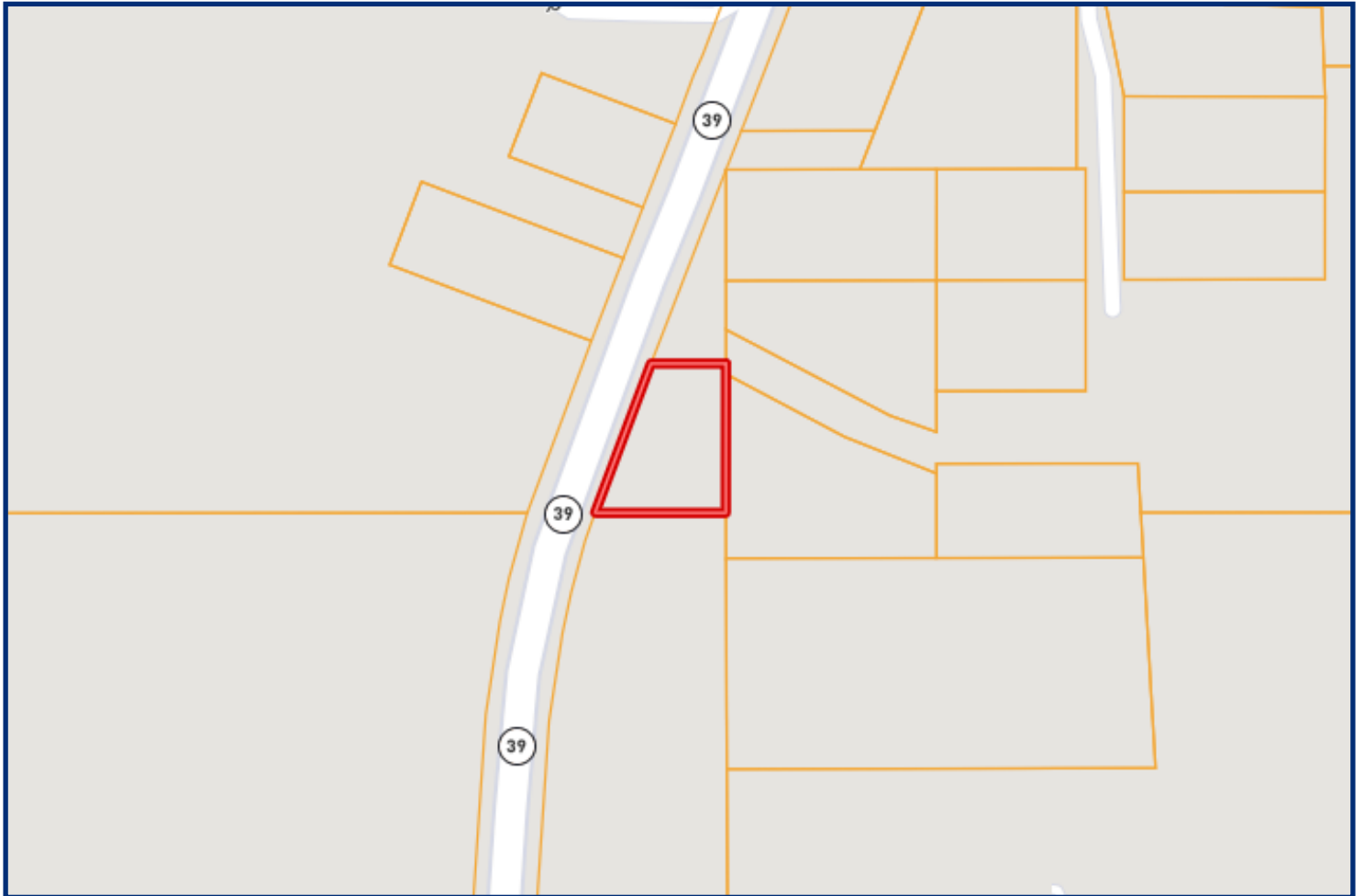
TRAVIS SMITH, REALTOR®
Travis@TomSmithLand.com
601.898.2772 **office** | 601.600.0428 **cell**



TomSmithLandandHomes.com

Information is believed to be accurate but not guaranteed.

OWNERSHIP MAP



*Call me
today!*

TRAVIS SMITH, REALTOR®
Travis@TomSmithLand.com
601.898.2772 **office** | 601.600.0428 **cell**

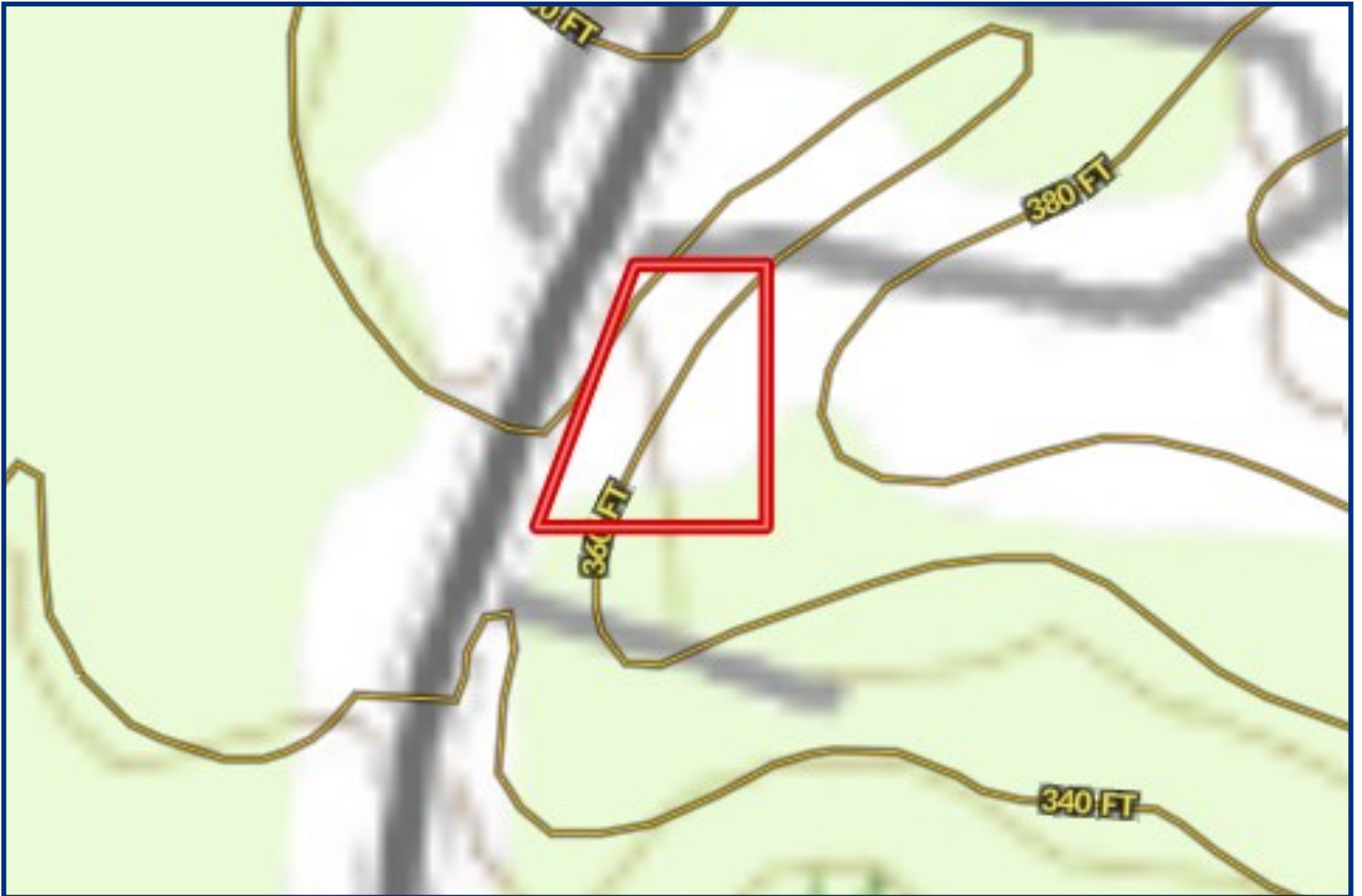


Expect More. Get More.

TomSmithLandandHomes.com

Information is believed to be accurate but not guaranteed.

TOPO MAP



*Call me
today!*

TRAVIS SMITH, REALTOR®
Travis@TomSmithLand.com
601.898.2772 **office** | 601.600.0428 **cell**

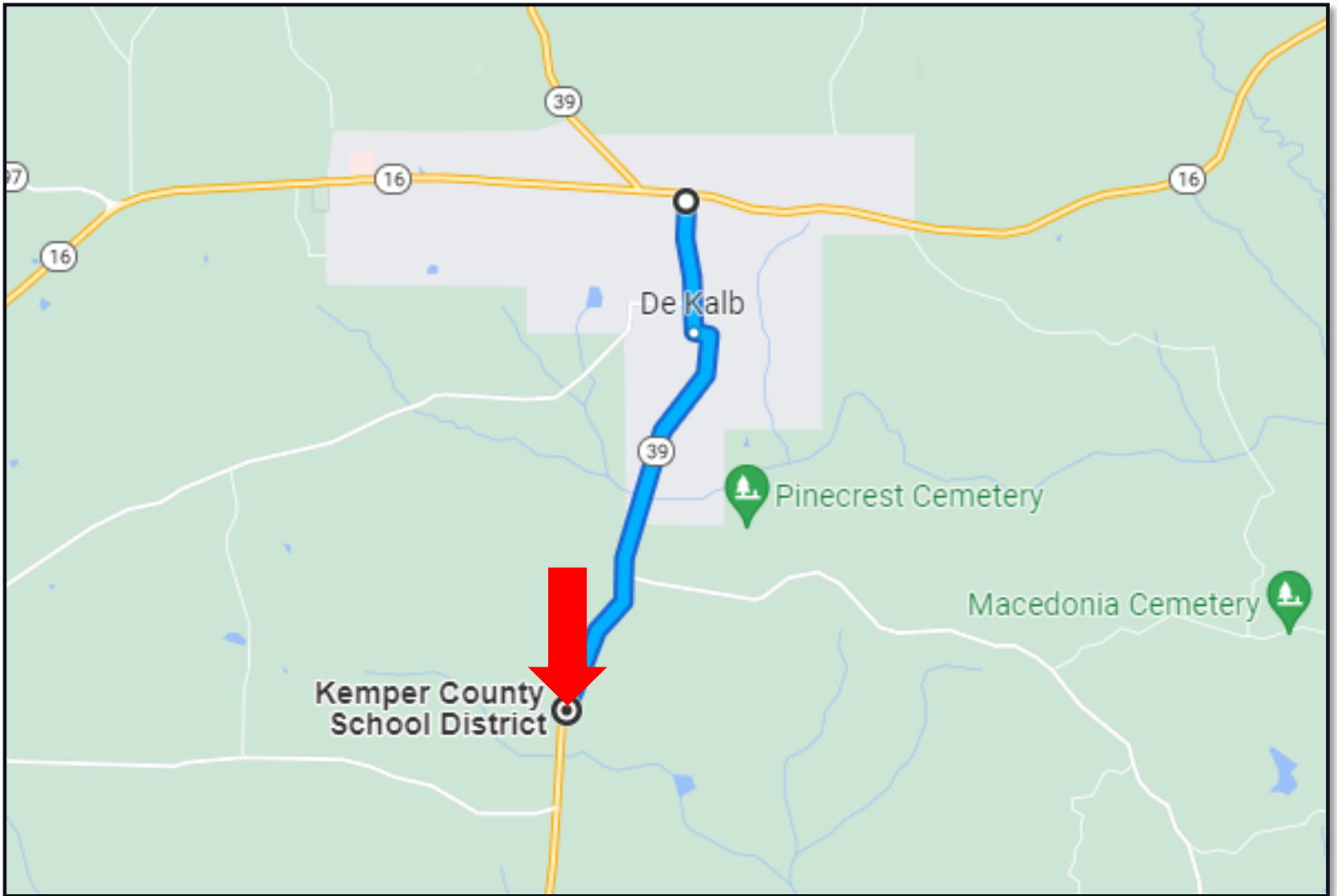


Expect More. Get More.

TomSmithLandandHomes.com

Information is believed to be accurate but not guaranteed.

DIRECTIONAL MAP



DIRECTIONS FROM INTERSECTION HWY 16 AND HWY 39 DeKalb, MS:
Head south on Main Ave toward Chestnut St for 0.7 miles then Continue onto MS -39 S/Church St for 2.2 miles then the location will be on the left.

[GOOGLE MAP LINK](#)



Call me today!

TRAVIS SMITH, REALTOR®
Travis@TomSmithLand.com
601.898.2772 **office** | 601.600.0428 **cell**



TomSmithLandandHomes.com

Information is believed to be accurate but not guaranteed.