

Beautiful Tract Full of Hardwoods

24± Acres in Neshoba County, MS



This 24+/- acre tract is just what you've been looking for. This property would be perfect for a home or recreational use. Also it's not everyday you find a tract concentrated with hardwoods, most of the hardwoods are old enough to produce acorns making for great food source for wildlife as well as a live creek great for a water source. No mobile homes allowed and utilities are available. Don't miss this opportunity to own land in Neshoba County. Call Travis Smith today to schedule your private showing!

DIRECTIONS FROM INTERSECTION HWY 486 AND HWY 16 IN PHILADELPHIA, MS: Head south on MS-486 E/Golf Course Rd toward Lamar Cir the property will be on the right in 7.6 miles.

[GOOGLE MAPS LINK](#)



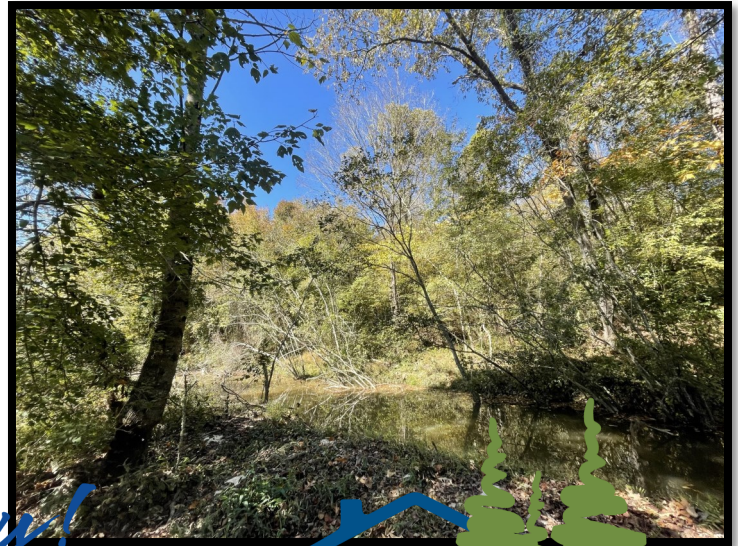
Call me today!

TRAVIS SMITH, REALTOR®
Travis@TomSmithLand.com
601.898.2772 **office** | 601.600.0428 **cell**



TomSmithLandandHomes.com

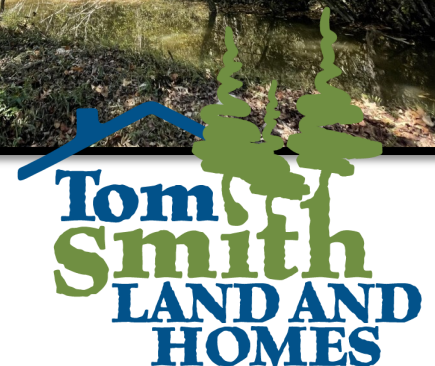
Information is believed to be accurate but not guaranteed.



Call me today!



TRAVIS SMITH, REALTOR®
Travis@TomSmithLand.com
601.898.2772 **office** | 601.600.0428 **cell**



Expect More. Get More.

TomSmithLandandHomes.com

Information is believed to be accurate but not guaranteed.



*Call me
today!*



TRAVIS SMITH, REALTOR®
Travis@TomSmithLand.com
601.898.2772 **office** | 601.600.0428 **cell**

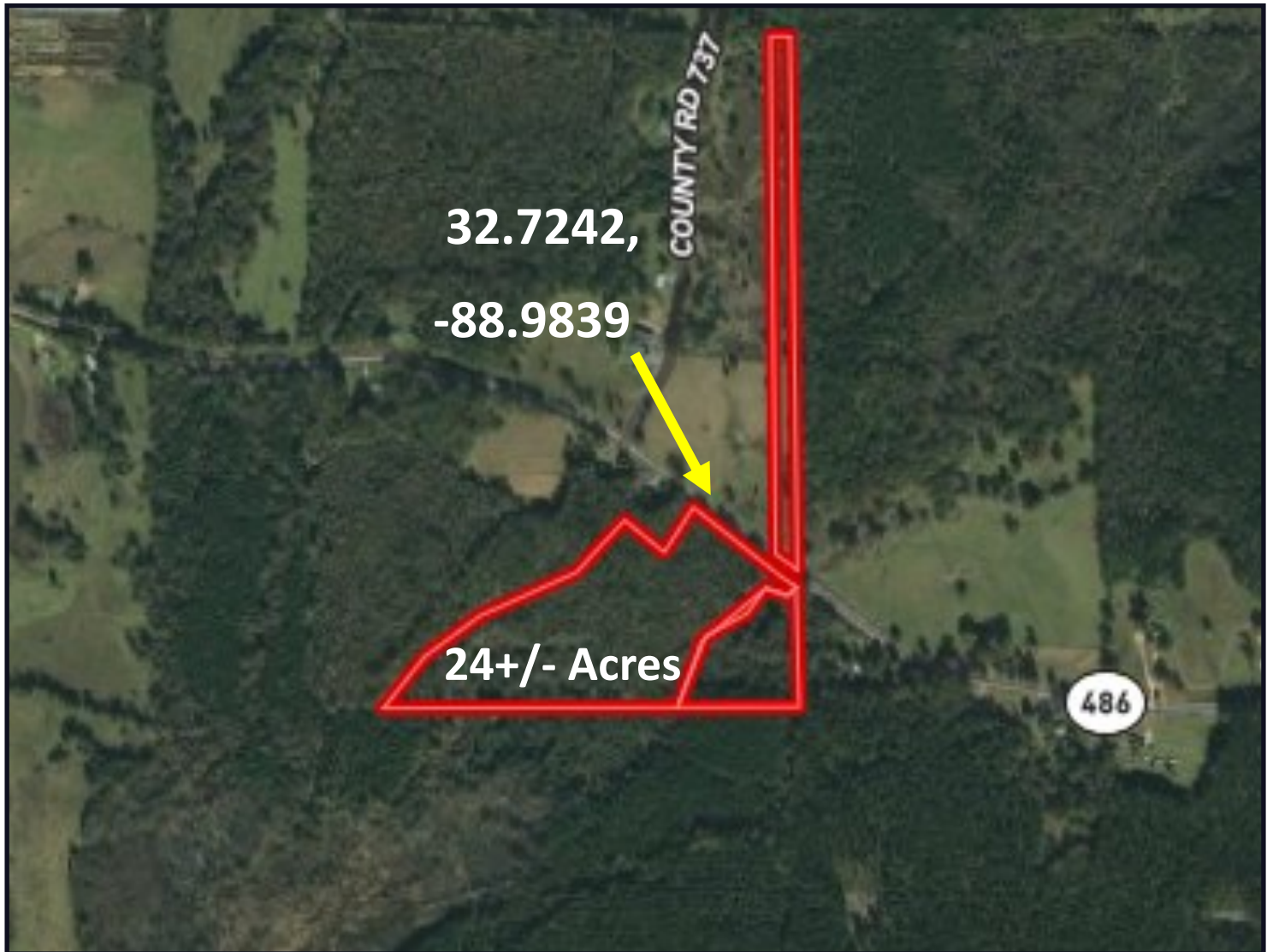


Expect More. Get More.

TomSmithLandandHomes.com

Information is believed to be accurate but not guaranteed.

AERIAL MAP



CLICK [HERE](#) FOR AN INTERACTIVE MAP

*Call me
today!*

TRAVIS SMITH, REALTOR®
Travis@TomSmithLand.com
601.898.2772 **office** | 601.600.0428 **cell**

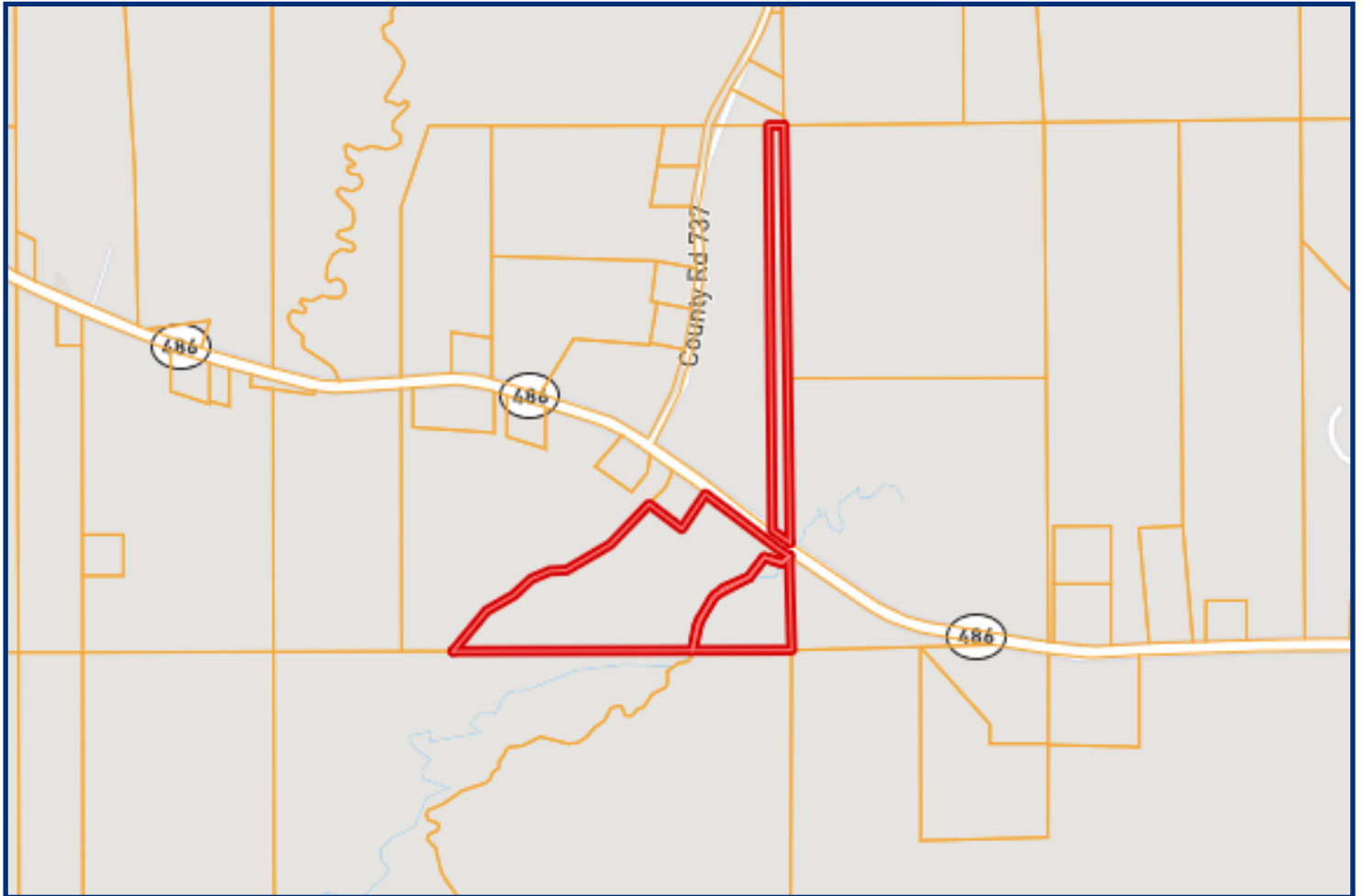


Expect More. Get More.

TomSmithLandandHomes.com

Information is believed to be accurate but not guaranteed.

OWNERSHIP MAP



*Call me
today!*

TRAVIS SMITH, REALTOR®
Travis@TomSmithLand.com
601.898.2772 **office** | 601.600.0428 **cell**

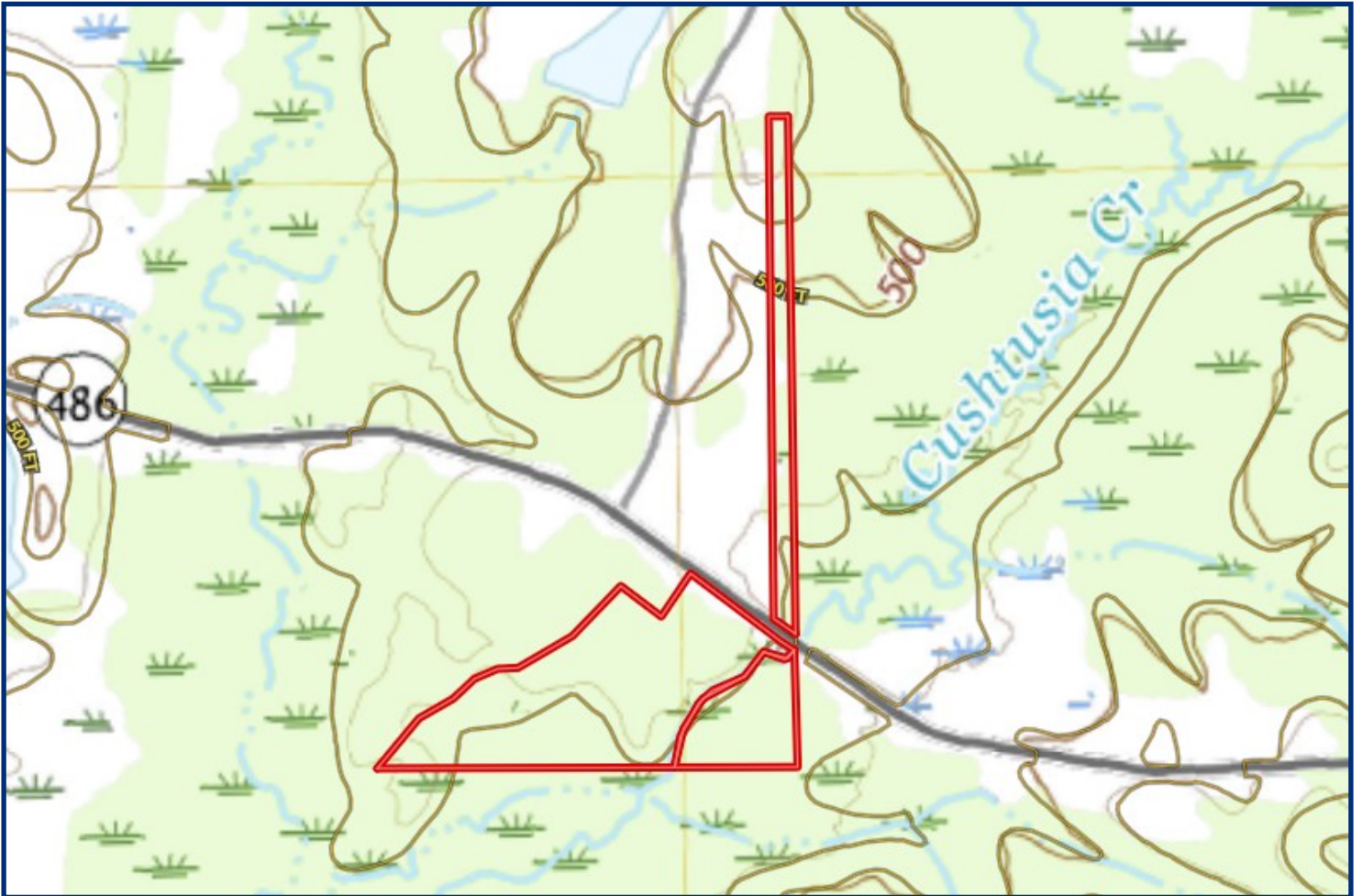


Expect More. Get More.

TomSmithLandandHomes.com

Information is believed to be accurate but not guaranteed.

TOPO MAP



*Call me
today!*

TRAVIS SMITH, REALTOR®
Travis@TomSmithLand.com
601.898.2772 **office** | 601.600.0428 **cell**

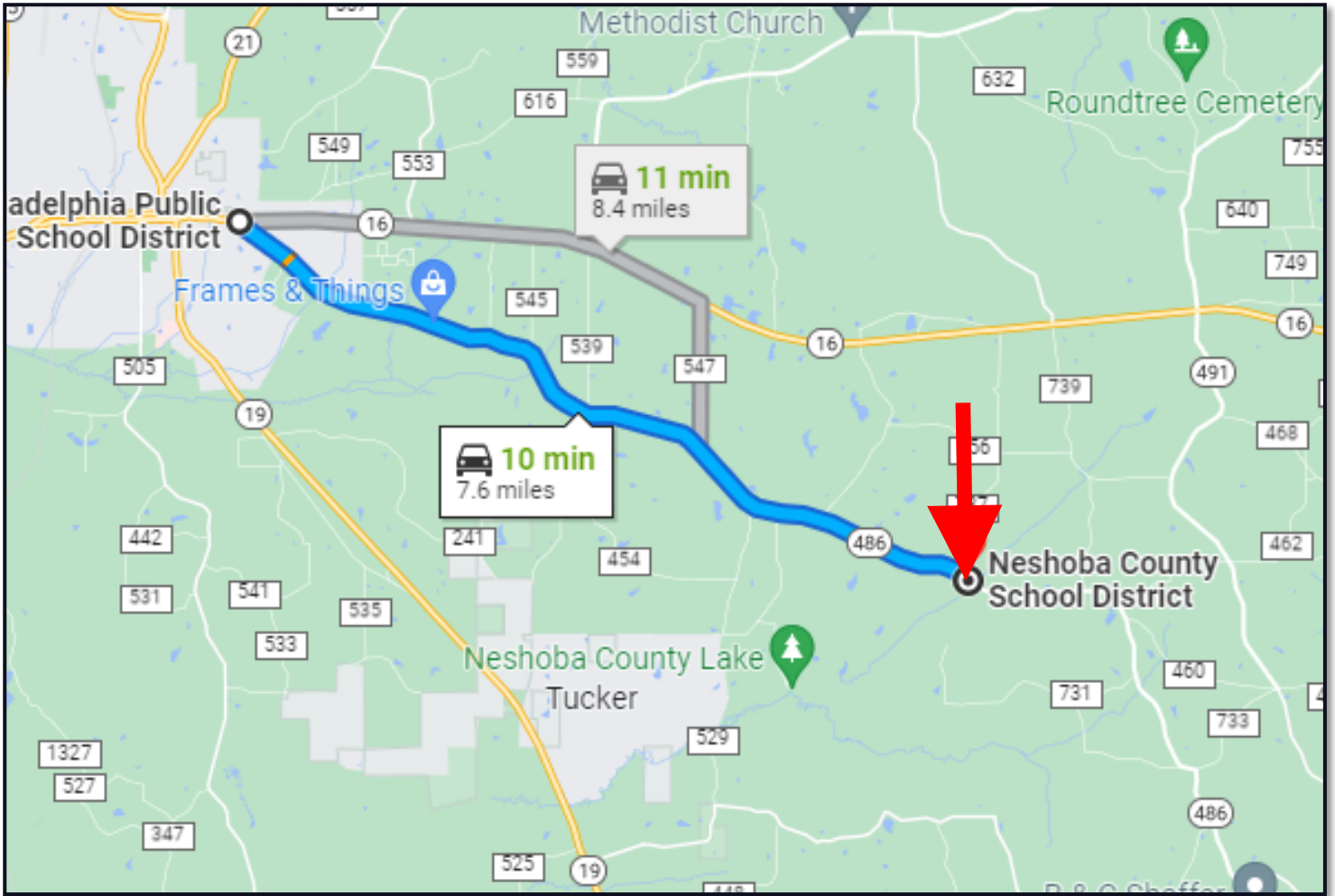


Expect More. Get More.

TomSmithLandandHomes.com

Information is believed to be accurate but not guaranteed.

DIRECTIONAL MAP



DIRECTIONS FROM INTERSECTION HWY 486 AND HWY 16 IN PHILADELPHIA, MS:

Head south on MS-486 E/Golf Course Rd toward Lamar Cir the property will be on the right in 7.6 miles.

GOOGLE MAPS LINK



Call me today!

TRAVIS SMITH, REALTOR®
Travis@TomSmithLand.com
601.898.2772 **office** | 601.600.0428 **cell**



Expect More. Get More.

TomSmithLandandHomes.com

Information is believed to be accurate but not guaranteed.