

# A Hunter's Dream



258 +/- AC  
Hunting Tract



Teasdale, MS  
Tallahatchie County

## \$606,000



2011-2022  
BEST  
BROKERAGES

*Call me  
today!*

**ANTHONY STEEN, REALTOR®**  
Anthony@TomSmithLand.com  
662.441.2500 office | 662.645.5151 cell



Expect More. Get More.

## TomSmithLandandHomes.com

Information is believed to be accurate but not guaranteed.



## The Details

Are you a hunting enthusiast? This property is in Teasdale, MS; Tallahatchie County is every hunter's dream!

This 258+/- AC in Tallahatchie county is a great hunting tract loaded with turkey and deer. The tract has 25-30-year-old pine mixed with oak and cedar, with great investment potential for its new owner. The gated entrance leads into a 2-3+/- acre opening with utilities, potentially a great spot to build your future house or hunting camp.

The property consists of a pond and creek that the turkeys love to travel up and down. Over nine food plots are planted and ready for this deer and turkey hunting season. This property is located in Tallahatchie County, just south of Teasdale, MS, that's known for turkeys and trophy bucks! So if you're looking for a great hunting or investment tract, look no further; give Anthony a call today!

[Click to view additional photos](#)

*Call me today!*

**ANTHONY STEEN, REALTOR®**

Anthony@TomSmithLand.com

662.441.2500 **office** | 662.645.5151 **cell**



**TomSmithLandandHomes.com**

Information is believed to be accurate but not guaranteed.





[Click to view additional photos](#)



*Call me today!*

**ANTHONY STEEN**, REALTOR®  
 Anthony@TomSmithLand.com  
 662.441.2500 **office** | 662.645.5151 **cell**



**TomSmithLandandHomes.com**

Information is believed to be accurate but not guaranteed.





[Click to view additional photos](#)



*Call me today!*

**ANTHONY STEEN**, REALTOR®  
Anthony@TomSmithLand.com  
662.441.2500 **office** | 662.645.5151 **cell**



Expect More. Get More.



**TomSmithLandandHomes.com**

Information is believed to be accurate but not guaranteed.



## Aerial Map

34.0869, -89.9761



258 +/- acres

[Click to view interactive map](#)

## Aerial Map with Water Features



*Call me today!*

**ANTHONY STEEN**, REALTOR®

Anthony@TomSmithLand.com

662.441.2500 **office** | 662.645.5151 **cell**



Expect More. Get More.

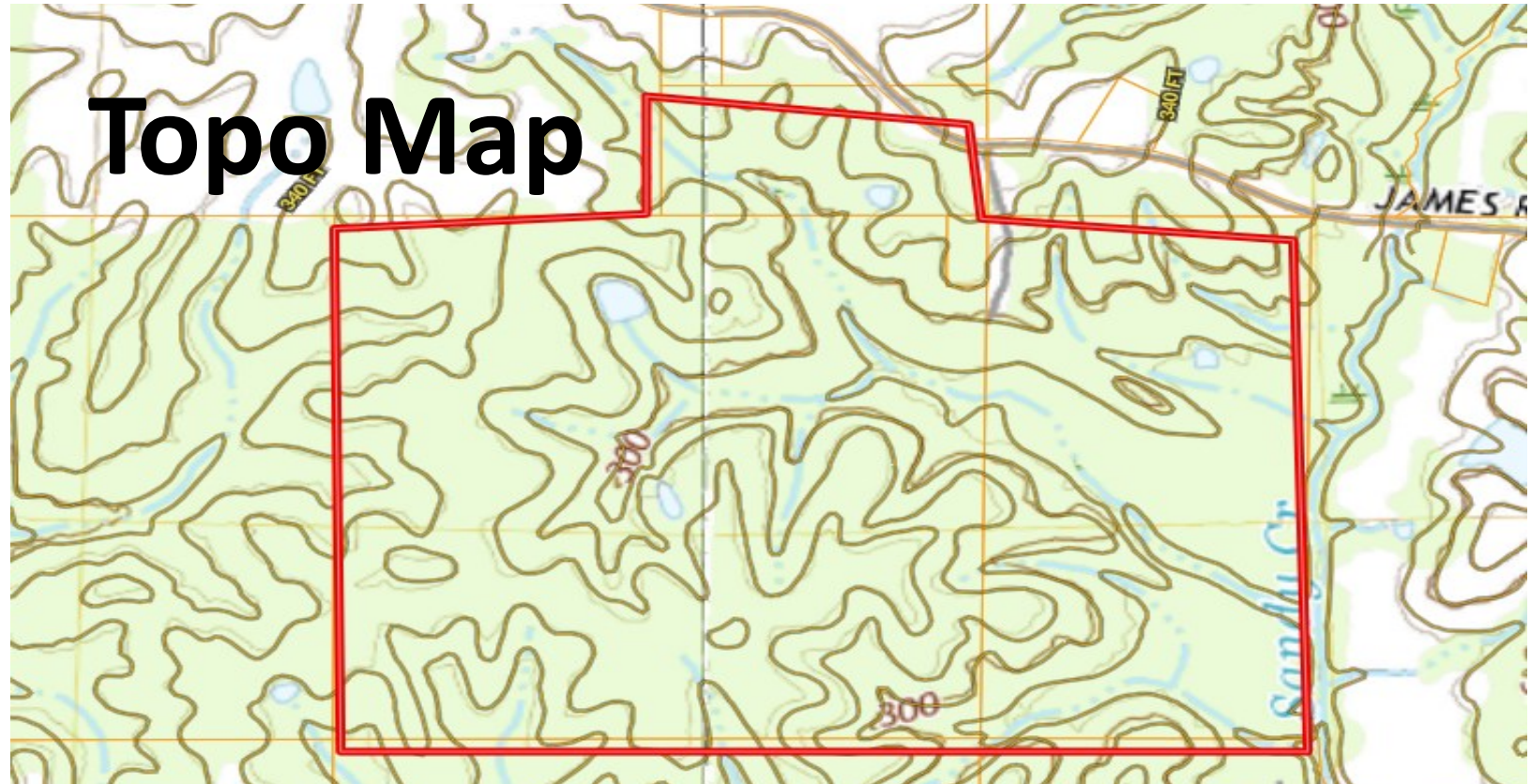


**TomSmithLandandHomes.com**

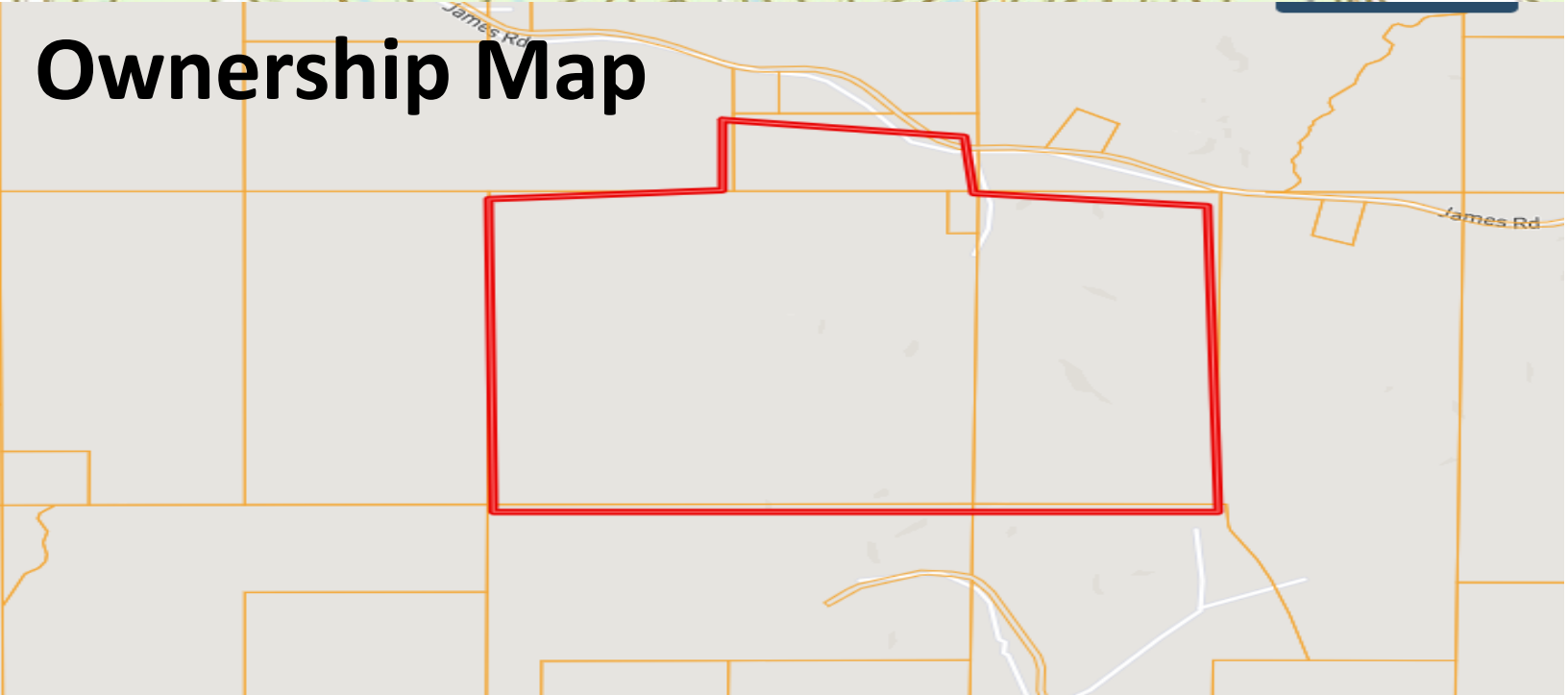
Information is believed to be accurate but not guaranteed.



# Topo Map



# Ownership Map



*Call me today!*

**ANTHONY STEEN**, REALTOR®  
Anthony@TomSmithLand.com  
662.441.2500 **office** | 662.645.5151 **cell**

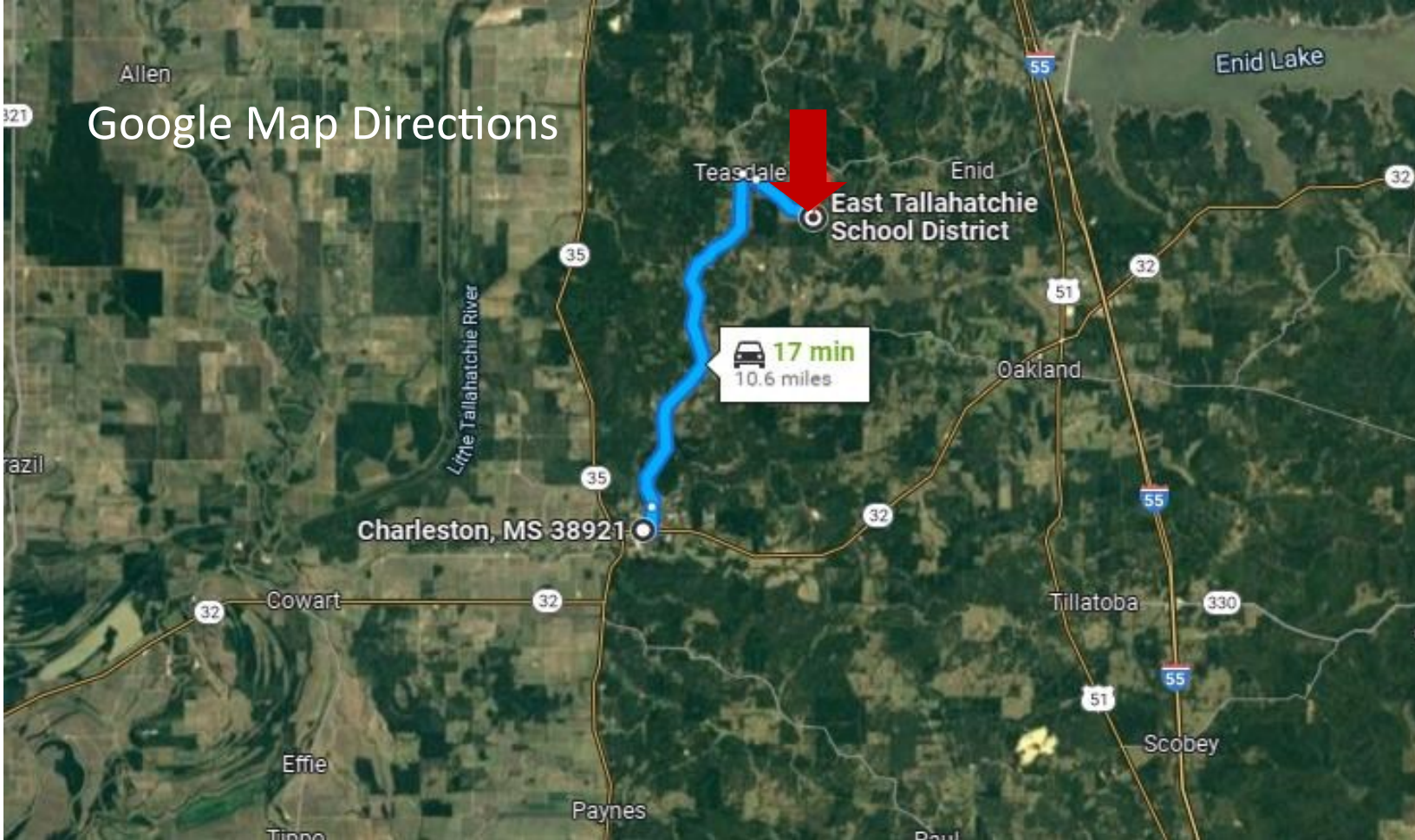


**TomSmithLandandHomes.com**

Information is believed to be accurate but not guaranteed.



## Google Map Directions



### Directions from Court Sq and E Main St in Charleston, MS:

Head east on George Payne Cossar Blvd/Main St toward Diagon Aly for .1 of a mile. Turn left onto Martin Luther King Jr Drive and travel .5 of a mile. Continue onto Teasdale Road for 8 miles. Turn right onto Enid– Teasdale Road for .3 of a mile. Turn right onto James road and continue on for 1.5 miles. The entrance to the property will be on your left.

[Google Map Directions](#)

*Call me today!*

**ANTHONY STEEN**, REALTOR®

Anthony@TomSmithLand.com

662.441.2500 **office** | 662.645.5151 **cell**



**TomSmithLandandHomes.com**

Information is believed to be accurate but not guaranteed.