

# Home on 66.78/- Acres Oktibbeha County, MS



This 4,487 SqFt house sitting on 66.78+/- acres in Oktibbeha County, MS, on Brown Road in Starkville, has a lot to offer. This house features a two-car garage, four bedrooms, four bathrooms, a huge kitchen, multiple family rooms, and a pool house attached to the main living area. When turning into the driveway, you are greeted by a beautiful pasture surrounded by mature timber. There are cut trails throughout the property with a couple of old ponds that could be fixed up and turned into a nice-sized lake. Plenty of deer sign and many other wildlife signs were present throughout the property. With a little work, this property could become a long-time family home where you can hunt or fish in your backyard! The 12.8+/- acres across the road are also available in addition to the sale price. Call Harper or Walker to schedule your private tour!

**Directions from Walmart on Highway 12 , Starkville MS:** From Walmart in .1 miles turn right onto MS-12/ Highway 12 West. Then in 390ft take the exit ramp for Highway 25. After that .4 miles take the exit ramp to MS-182/ MS Highway 182 West. Stay on MS-182 for 4.4 miles then take a left onto Self Creek Road. After 1.6 miles on Self Creek Road turn left onto Longview-Adaton Road. Then in .7 miles turn right onto Brown Road. The property will be on your left in 2.2 miles.



**HARPER DAY**, REALTOR®  
Harper@TomSmithLand.com  
662.268.6333 office | 662.694.9751 cell



Expect More. Get More.

*Call us today!*



**WALKER TRANUM**, REALTOR®  
Walker@TomSmithHomes.com  
662.268.6333 office | 662.769.1442 cell

## TomSmithLandandHomes.com

Information is believed to be accurate but not guaranteed.







**HARPER DAY**, REALTOR®  
 Harper@TomSmithLand.com  
 662.268.6333 office | 662.694.9751 cell



Expect More. Get More.

*Call us today!*



**WALKER TRANUM**, REALTOR®  
 Walker@TomSmithHomes.com  
 662.268.6333 office | 662.769.1442 cell

**TomSmithLandandHomes.com**

Information is believed to be accurate but not guaranteed.







**HARPER DAY**, REALTOR®  
 Harper@TomSmithLand.com  
 662.268.6333 office | 662.694.9751 cell



Expect More. Get More.

*Call us today!*



**WALKER TRANUM**, REALTOR®  
 Walker@TomSmithHomes.com  
 662.268.6333 office | 662.769.1442 cell

**TomSmithLandandHomes.com**

Information is believed to be accurate but not guaranteed.







**HARPER DAY**, REALTOR®  
 Harper@TomSmithLand.com  
 662.268.6333 office | 662.694.9751 cell



Expect More. Get More.

*Call us today!*



**WALKER TRANUM**, REALTOR®  
 Walker@TomSmithHomes.com  
 662.268.6333 office | 662.769.1442 cell

**TomSmithLandandHomes.com**

Information is believed to be accurate but not guaranteed.







**HARPER DAY**, REALTOR®  
 Harper@TomSmithLand.com  
 662.268.6333 office | 662.694.9751 cell



Expect More. Get More.

*Call us today!*



**WALKER TRANUM**, REALTOR®  
 Walker@TomSmithHomes.com  
 662.268.6333 office | 662.769.1442 cell

**TomSmithLandandHomes.com**

Information is believed to be accurate but not guaranteed.







**HARPER DAY**, REALTOR®  
Harper@TomSmithLand.com  
662.268.6333 office | 662.694.9751 cell



Expect More. Get More.

*Call us today!*



**WALKER TRANUM**, REALTOR®  
Walker@TomSmithHomes.com  
662.268.6333 office | 662.769.1442 cell

**TomSmithLandandHomes.com**

Information is believed to be accurate but not guaranteed.







**HARPER DAY**, REALTOR®  
 Harper@TomSmithLand.com  
 662.268.6333 office | 662.694.9751 cell



Expect More. Get More.

*Call us today!*



**WALKER TRANUM**, REALTOR®  
 Walker@TomSmithHomes.com  
 662.268.6333 office | 662.769.1442 cell

**TomSmithLandandHomes.com**

Information is believed to be accurate but not guaranteed.







**HARPER DAY**, REALTOR®  
Harper@TomSmithLand.com  
662.268.6333 office | 662.694.9751 cell



Expect More. Get More.

*Call us today!*



**WALKER TRANUM**, REALTOR®  
Walker@TomSmithHomes.com  
662.268.6333 office | 662.769.1442 cell

**TomSmithLandandHomes.com**

Information is believed to be accurate but not guaranteed.







**HARPER DAY**, REALTOR®  
Harper@TomSmithLand.com  
662.268.6333 office | 662.694.9751 cell



Expect More. Get More.

*Call us today!*



**WALKER TRANUM**, REALTOR®  
Walker@TomSmithHomes.com  
662.268.6333 office | 662.769.1442 cell

**TomSmithLandandHomes.com**

Information is believed to be accurate but not guaranteed.





# Aerial Map



Click [Here](#) For An Interactive Link



**HARPER DAY**, REALTOR®  
Harper@TomSmithLand.com  
662.268.6333 office | 662.694.9751 cell



Expect More. Get More.

*Call us today!*



**WALKER TRANUM**, REALTOR®  
Walker@TomSmithHomes.com  
662.268.6333 office | 662.769.1442 cell

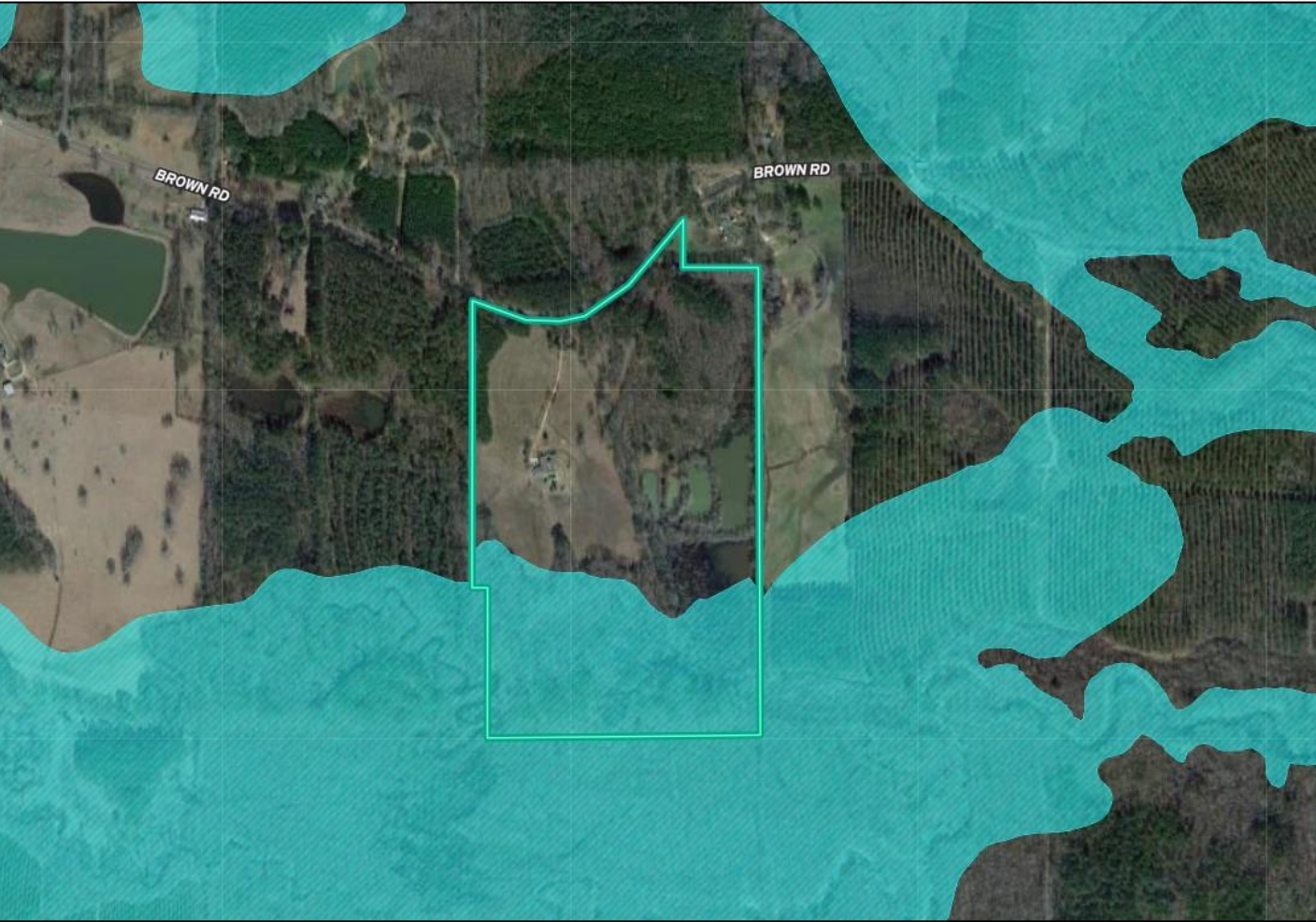
**TomSmithLandandHomes.com**

Information is believed to be accurate but not guaranteed.





# Flood Map



**HARPER DAY**, REALTOR®  
Harper@TomSmithLand.com  
662.268.6333 office | 662.694.9751 cell



Expect More. Get More.

*Call us today!*



**WALKER TRANUM**, REALTOR®  
Walker@TomSmithHomes.com  
662.268.6333 office | 662.769.1442 cell

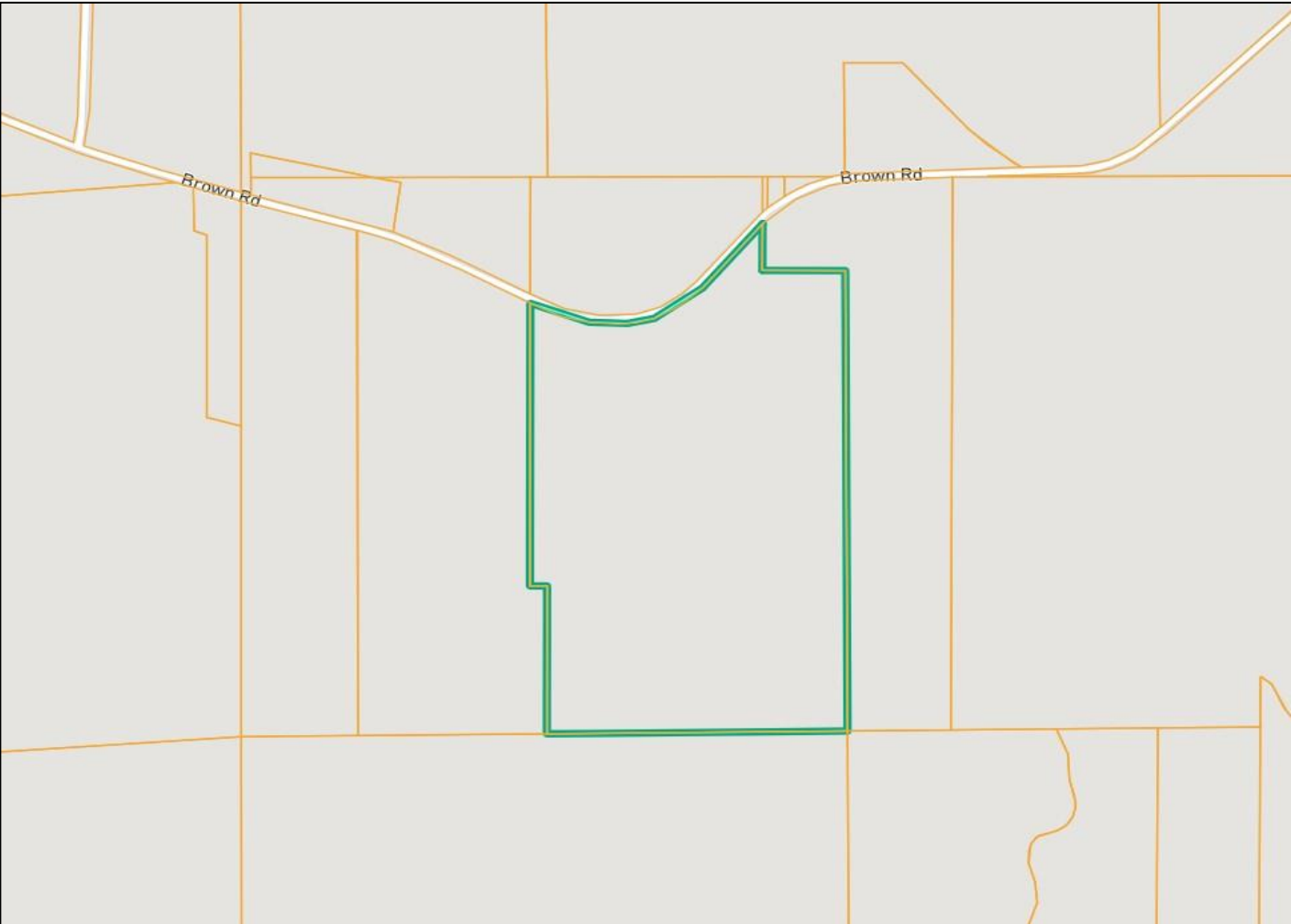
**TomSmithLandandHomes.com**

Information is believed to be accurate but not guaranteed.





# Ownership Map



**HARPER DAY**, REALTOR®  
Harper@TomSmithLand.com  
662.268.6333 office | 662.694.9751 cell



Expect More. Get More.

*Call us today!*



**WALKER TRANUM**, REALTOR®  
Walker@TomSmithHomes.com  
662.268.6333 office | 662.769.1442 cell

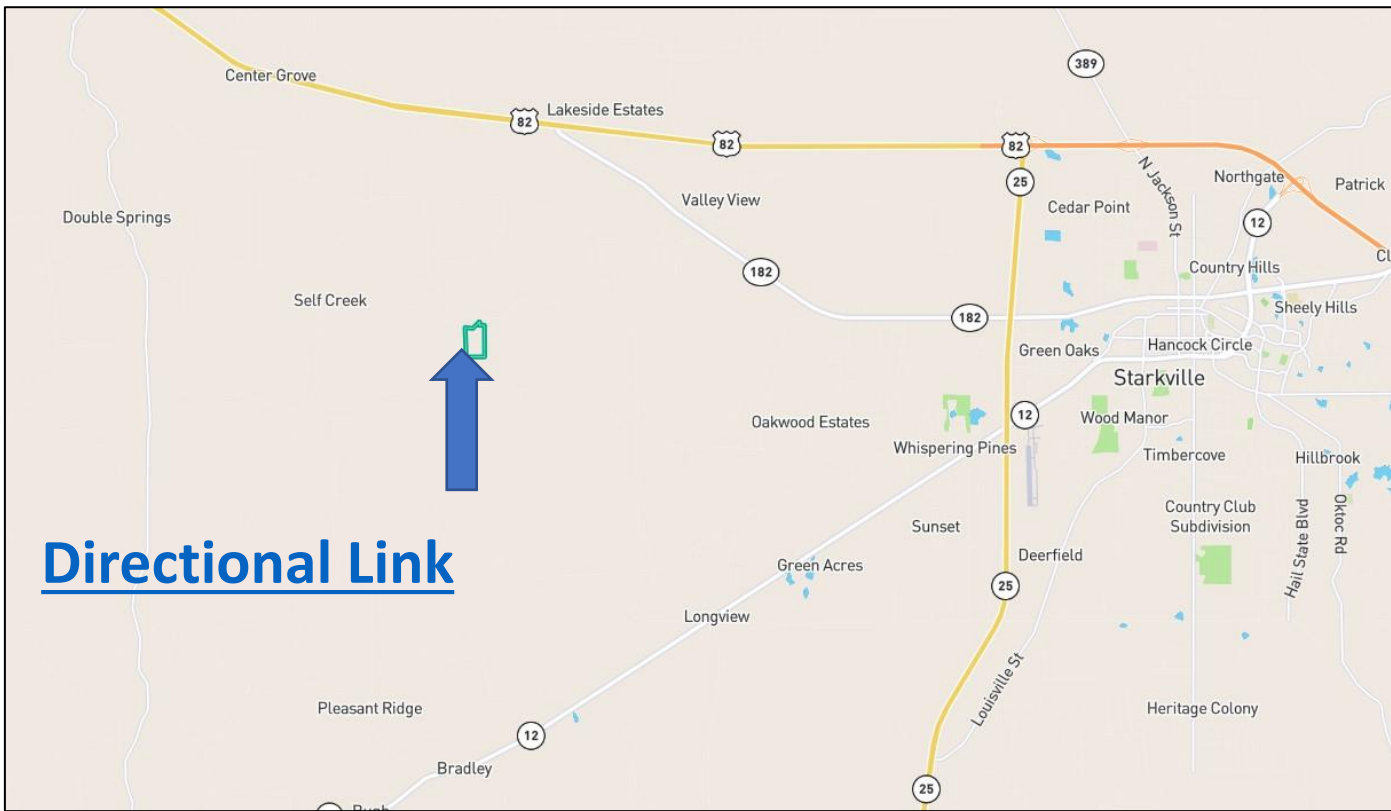
**TomSmithLandandHomes.com**

Information is believed to be accurate but not guaranteed.





# Directional Map



[Directional Link](#)

**Directions from Walmart on Highway 12 , Starkville MS:** From Walmart in .1 miles turn right onto MS-12/ Highway 12 West. Then in 390ft take the exit ramp for Highway 25. After that .4 miles take the exit ramp to MS-182/ MS Highway 182 West. Stay on MS-182 for 4.4 miles then take a left onto Self Creek Road. After 1.6 miles on Self Creek Road turn left onto Longview-Adaton Road. Then in .7 miles turn right onto Brown Road. The property will be on your left in 2.2 miles.



**HARPER DAY**, REALTOR®  
Harper@TomSmithLand.com  
662.268.6333 office | 662.694.9751 cell



Expect More. Get More.

*Call us today!*



**WALKER TRANUM**, REALTOR®  
Walker@TomSmithHomes.com  
662.268.6333 office | 662.769.1442 cell

**TomSmithLandandHomes.com**

Information is believed to be accurate but not guaranteed.

