

\$999,999

155+/-AC

Rena Lara, Coahoma County, MS



# Investment Property with Multiple Revenue Sources



*Call me today!*

**ANTHONY STEEN, REALTOR**  
Anthony@TomSmithLand.com  
662.441.2500 office | 662.645.5151 cell

**Tom Smith LAND AND HOMES**  
Expect More. Get More.

LandReport  
**2011-2022**  
AMERICA'S  
**BEST**  
BROKERAGES

**TomSmithLandandHomes.com**

Information is believed to be accurate but not guaranteed.



The potential is endless with this great investment property located in Rena Lara—Coahoma County, MS! This property has multiple sources of yearly income, from the 155+/-AC of farm land that has been farmed in rice and beans this past season, to the Great river Road Country Store that supplies gas, snacks, treats, drinks, and a restaurant that provides lunch and dinner to customers in the surrounding areas. You might even occasionally catch some live music at night! In fact, this is the ONLY gas station in Rena Lara! In case the gas station, farm land, and restaurant weren't enough, there is also a 3 bedroom 2 bathroom house, 2 acre pond, and a pole barn to store all your equipment. This house would make a great rental home or house for your farm hand. Located not even a mile from the MS levee, you might also find a big buck or ducks traveling through the land. There are 2 great potential duck holes and 2 deer hunting food plots ready to hunt. So if you're looking to purchase a great investment look no more!

[Click to view photos](#)

*Call me today!*

**ANTHONY STEEN, REALTOR®**

Anthony@TomSmithLand.com

662.441.2500 **office** | 662.645.5151 **cell**



Expect More. Get More.



**TomSmithLandandHomes.com**

Information is believed to be accurate but not guaranteed.



[Click to view photos](#)



*Call me today!*

**ANTHONY STEEN, REALTOR**

Anthony@TomSmithLand.com

662.441.2500 office | 662.645.5131 cell



**TomSmithLandandHomes.com**

Information is believed to be accurate but not guaranteed.





[Click to view  
photos](#)

*Call me today!*



**ANTHONY STEEN, REALTOR®**  
 Anthony@TomSmithLand.com  
 662.441.2500 **office** | 662.645.5151 **cell**

**Tom  
Smith  
LAND AND  
HOMES**  
 Expect More. Get More.

**TomSmithLandandHomes.com**

Information is believed to be accurate but not guaranteed.







[Click to view photos](#)

*Call me today!*

**ANTHONY STEEN, REALTOR®**

Anthony@TomSmithLand.com

662.441.2500 **office** | 662.645.5151 **cell**



**TomSmithLandandHomes.com**

Information is believed to be accurate but not guaranteed.





[Click to view photos](#)

*Call me today!*

**ANTHONY STEEN, REALTOR®**

Anthony@TomSmithLand.com

662.441.2500 **office** | 662.645.5151 **cell**



**TomSmithLandandHomes.com**

Information is believed to be accurate but not guaranteed.







[Click to view photos](#)

*Call me today!*

**ANTHONY STEEN**, REALTOR®

Anthony@TomSmithLand.com

662.441.2500 **office** | 662.645.5151 **cell**

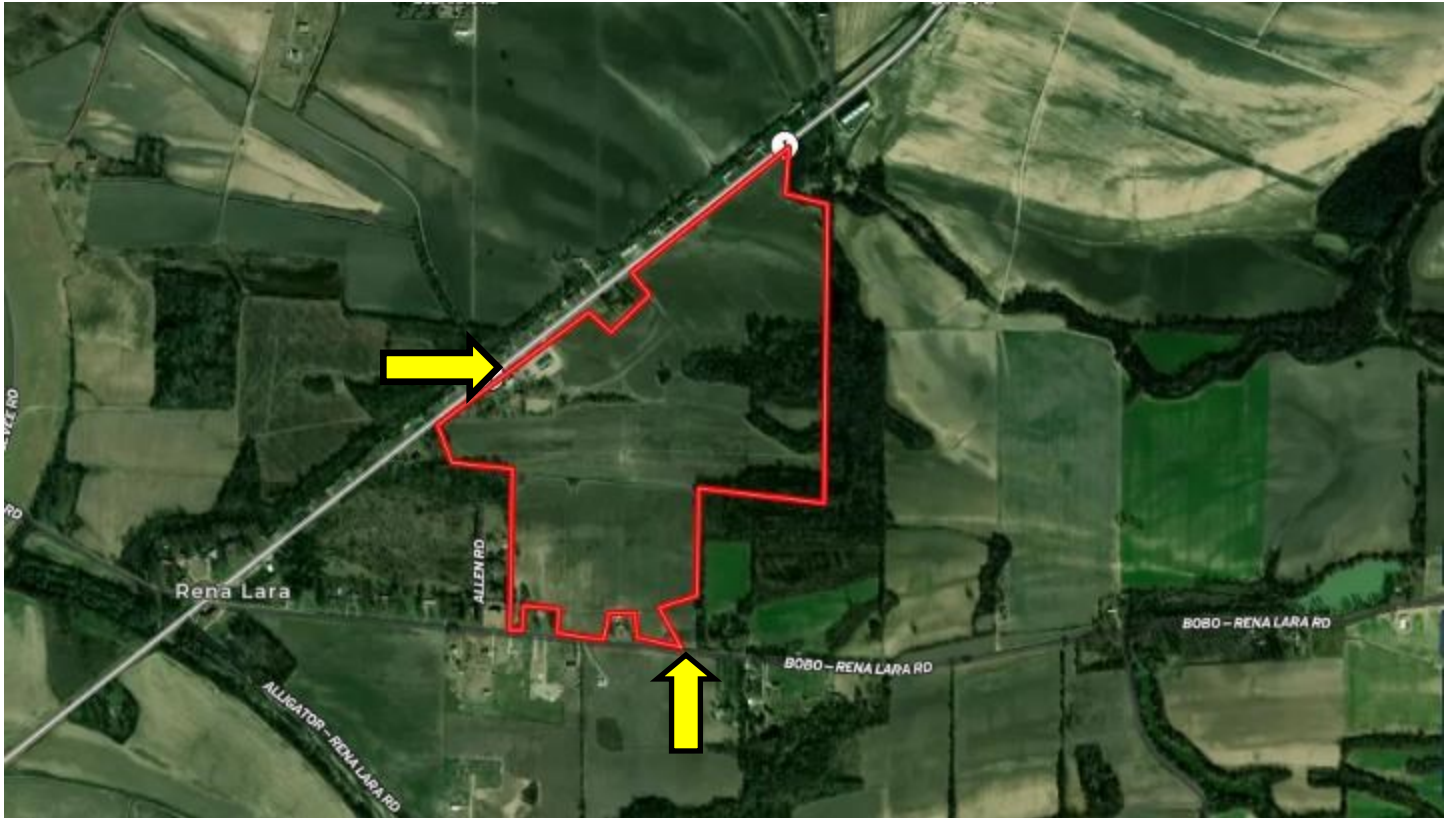


**TomSmithLandandHomes.com**

Information is believed to be accurate but not guaranteed.



# Aerial Map



[Click to view interactive map](#)

*Call me today!*

**ANTHONY STEEN**, REALTOR®

Anthony@TomSmithLand.com

662.441.2500 **office** | 662.645.5151 **cell**



**TomSmithLandandHomes.com**

Information is believed to be accurate but not guaranteed.





# Water Features



*Call me today!*

**ANTHONY STEEN**, REALTOR®

Anthony@TomSmithLand.com

662.441.2500 **office** | 662.645.5151 **cell**



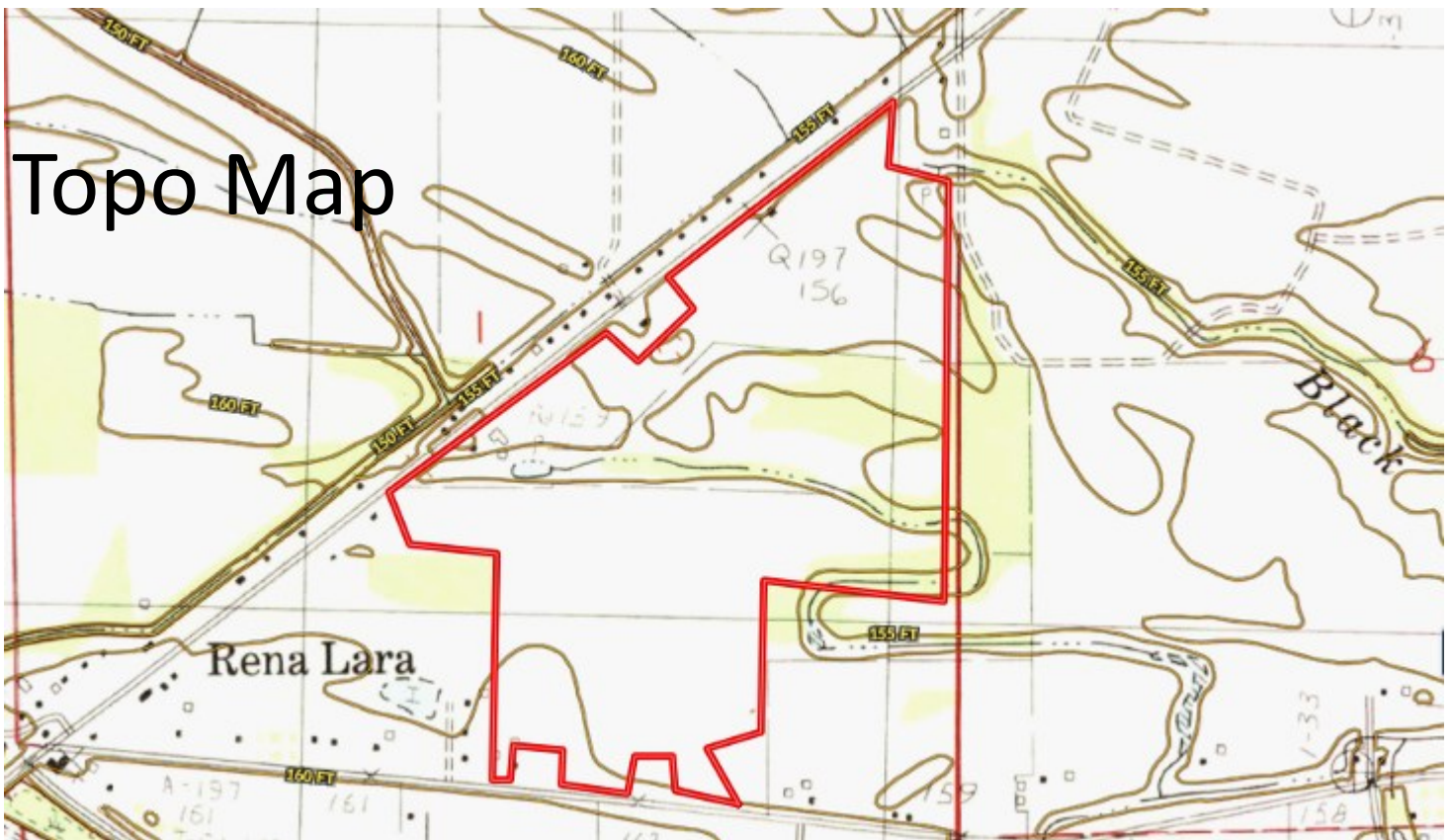
**TomSmithLandandHomes.com**

Information is believed to be accurate but not guaranteed.





# Topo Map



# Ownership Map



*Call me today!*

**ANTHONY STEEN, REALTOR®**

Anthony@TomSmithLand.com

662.441.2500 **office** | 662.645.5151 **cell**



Expect More. Get More.

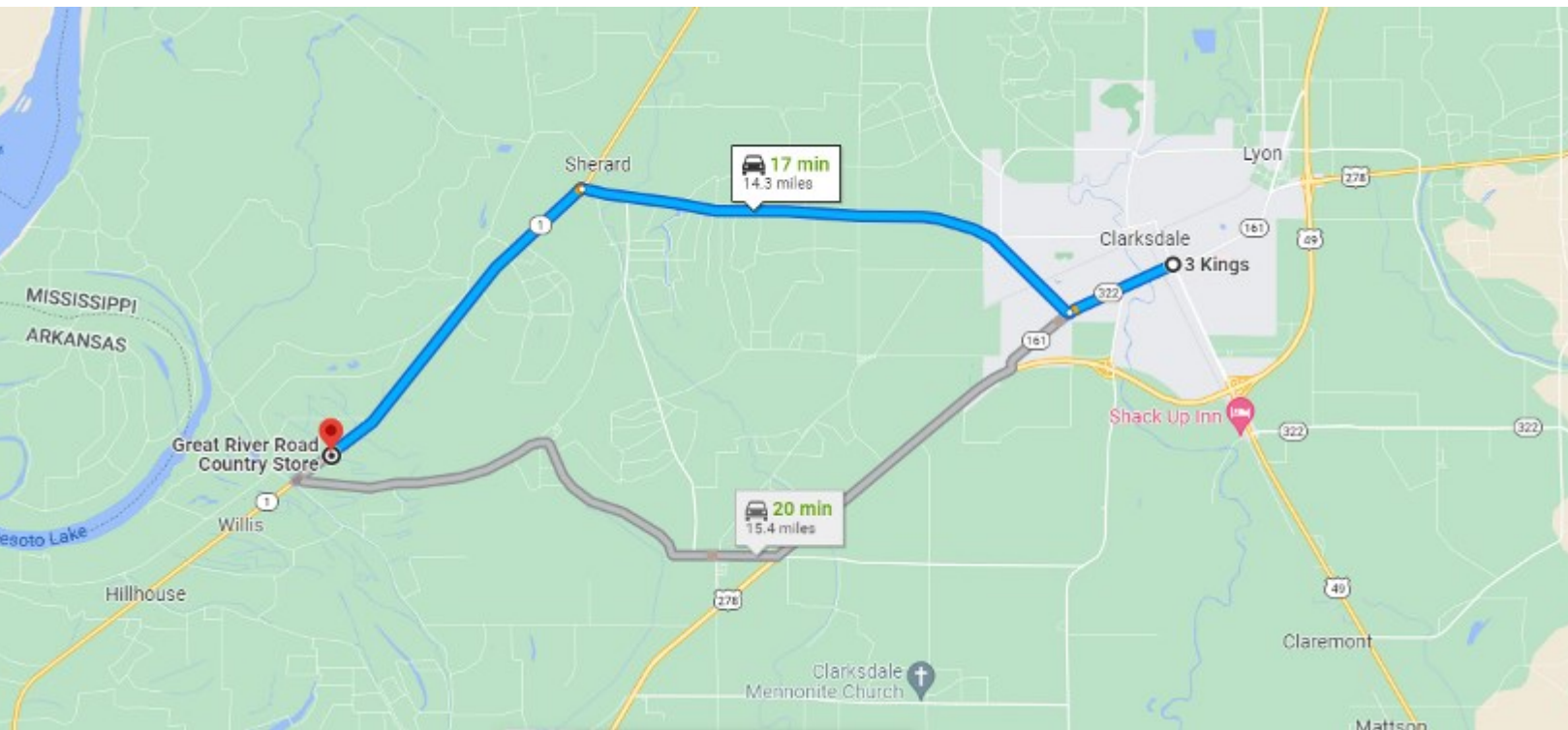
**TomSmithLandandHomes.com**

Information is believed to be accurate but not guaranteed.





# Google Map Directions



**Directions from The Crossroads in Clarksdale, MS:** Head southwest on N State Street, passing by O'Reilly Auto Parts on the left. Continue for 1.6 miles. Turn right onto Ms-322 W/ Sherard Road. Travel for 7.4 miles. Then turn left onto MS-1 S. In 5.3 miles the destination will be on the left.

## [Google Map Directions](#)

*Call me today!*

**ANTHONY STEEN, REALTOR®**

Anthony@TomSmithLand.com

662.441.2500 **office** | 662.645.5151 **cell**



**TomSmithLandandHomes.com**

Information is believed to be accurate but not guaranteed.