

Gas Station in Indianola Sunflower County, MS



233 Highway 82 West Indianola, MS 38751

This four-bay, six-pump gas station sits 90 feet off Highway 82 West frontage in Indianola, Sunflower County, MS. Traffic counts along this highway can reach 20,000+ in a single day. The station has approximately 2,400 sqft of shop space with walk-in coolers, food prep, cooking, and service areas. Call Emerson today for your private showing.

Directions from the intersection of Hwy 49 & Hwy 82 in Indianola, MS: Travel west on Hwy 82, passing McDonald's and in 1.3 miles the destination will be on the left.



Call me today!

EMERSON LOVELACE, REALTOR®
Emerson@TomSmithLand.com
662.441.2500 **office** | 662.715.3302 **cell**



TomSmithLandandHomes.com

Information is believed to be accurate but not guaranteed.



Call me today!

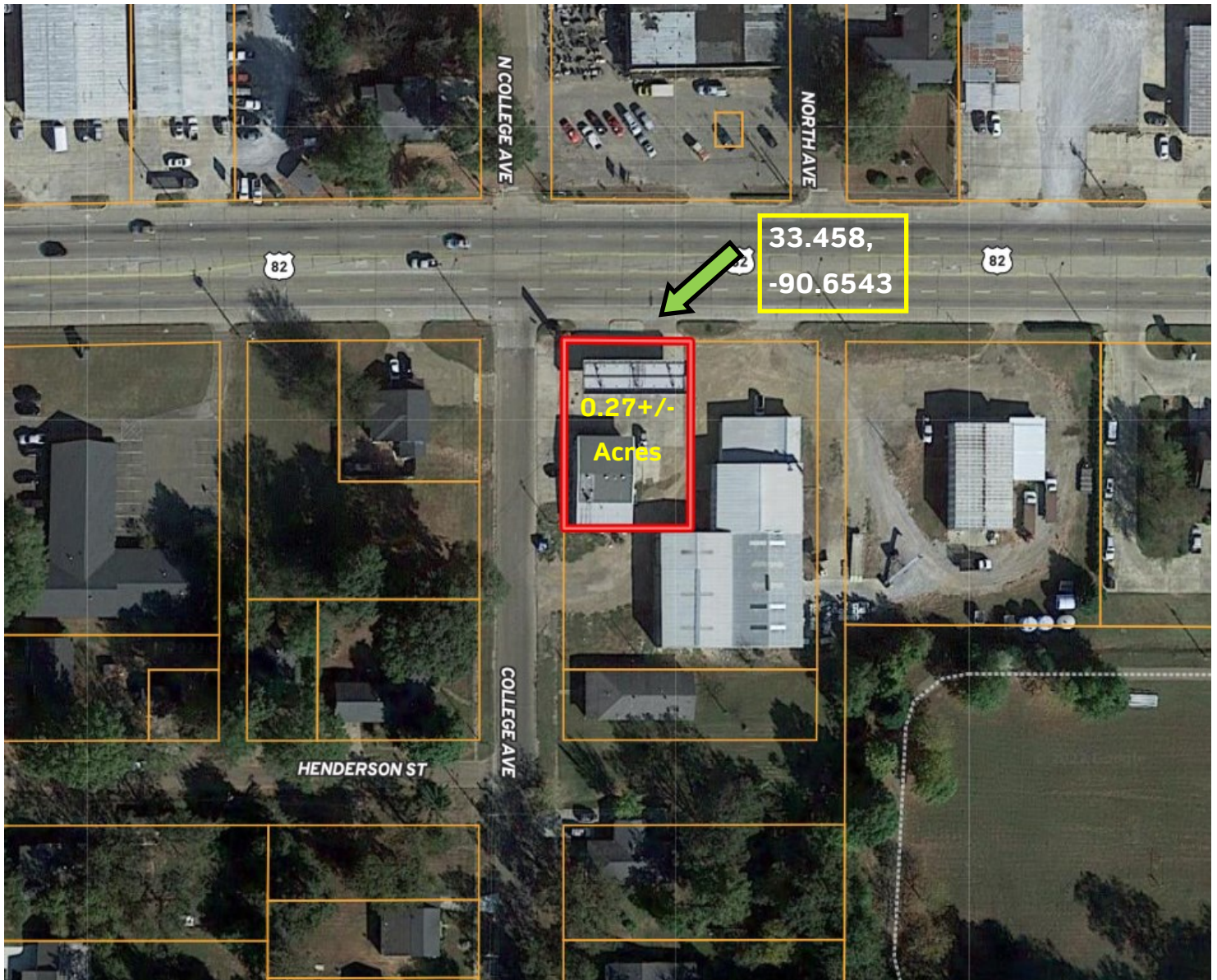
EMERSON LOVELACE, REALTOR®
 Emerson@TomSmithLand.com
 662.441.2500 **office** | 662.715.3302 **cell**



TomSmithLandandHomes.com

Information is believed to be accurate but not guaranteed.

AERIAL MAP



[Click for Interactive Map](#)

Call me today!

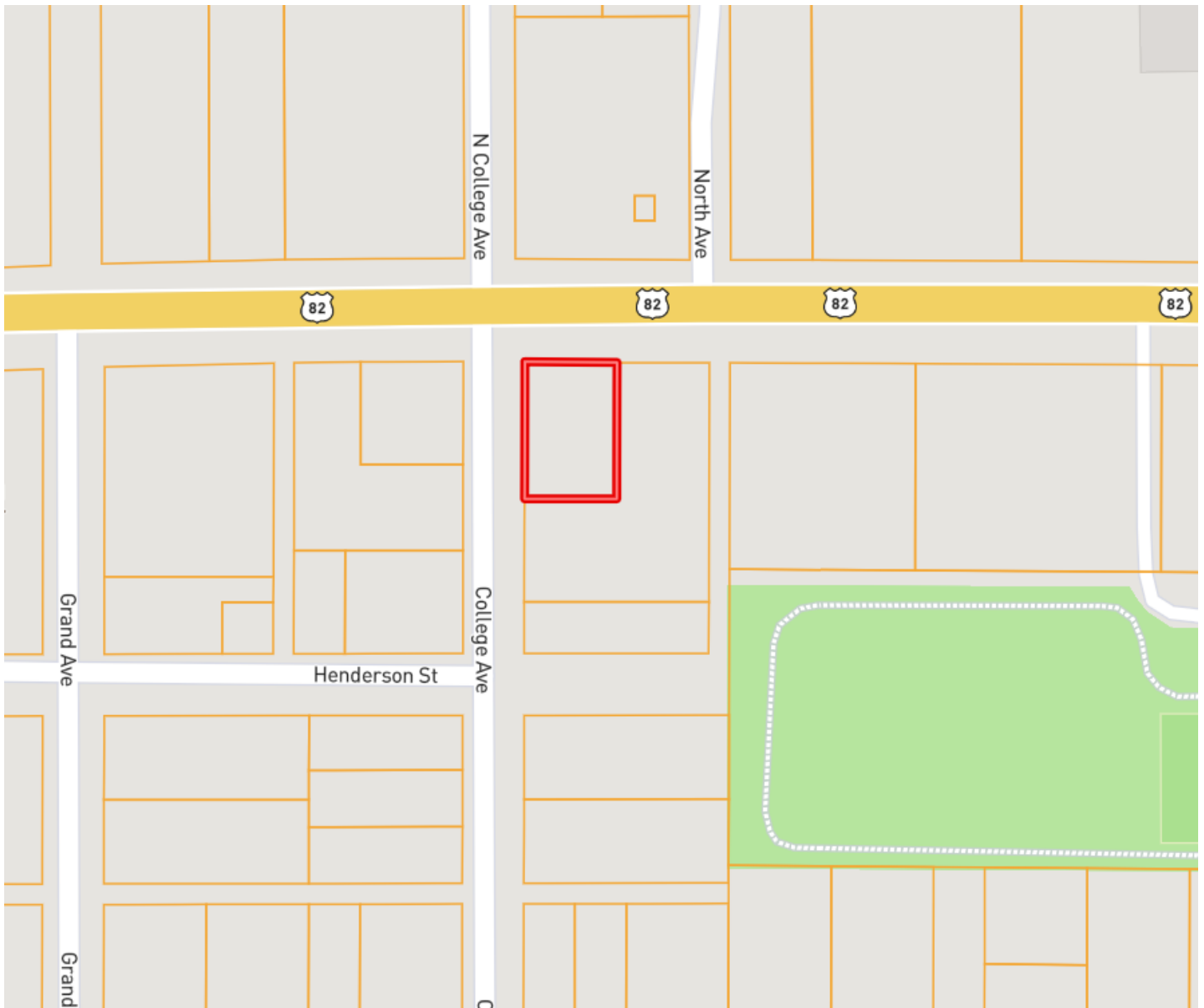
EMERSON LOVELACE, REALTOR®
Emerson@TomSmithLand.com
662.441.2500 **office** | 662.715.3302 **cell**



TomSmithLandandHomes.com

Information is believed to be accurate but not guaranteed.

OWNERSHIP MAP



Call me today!

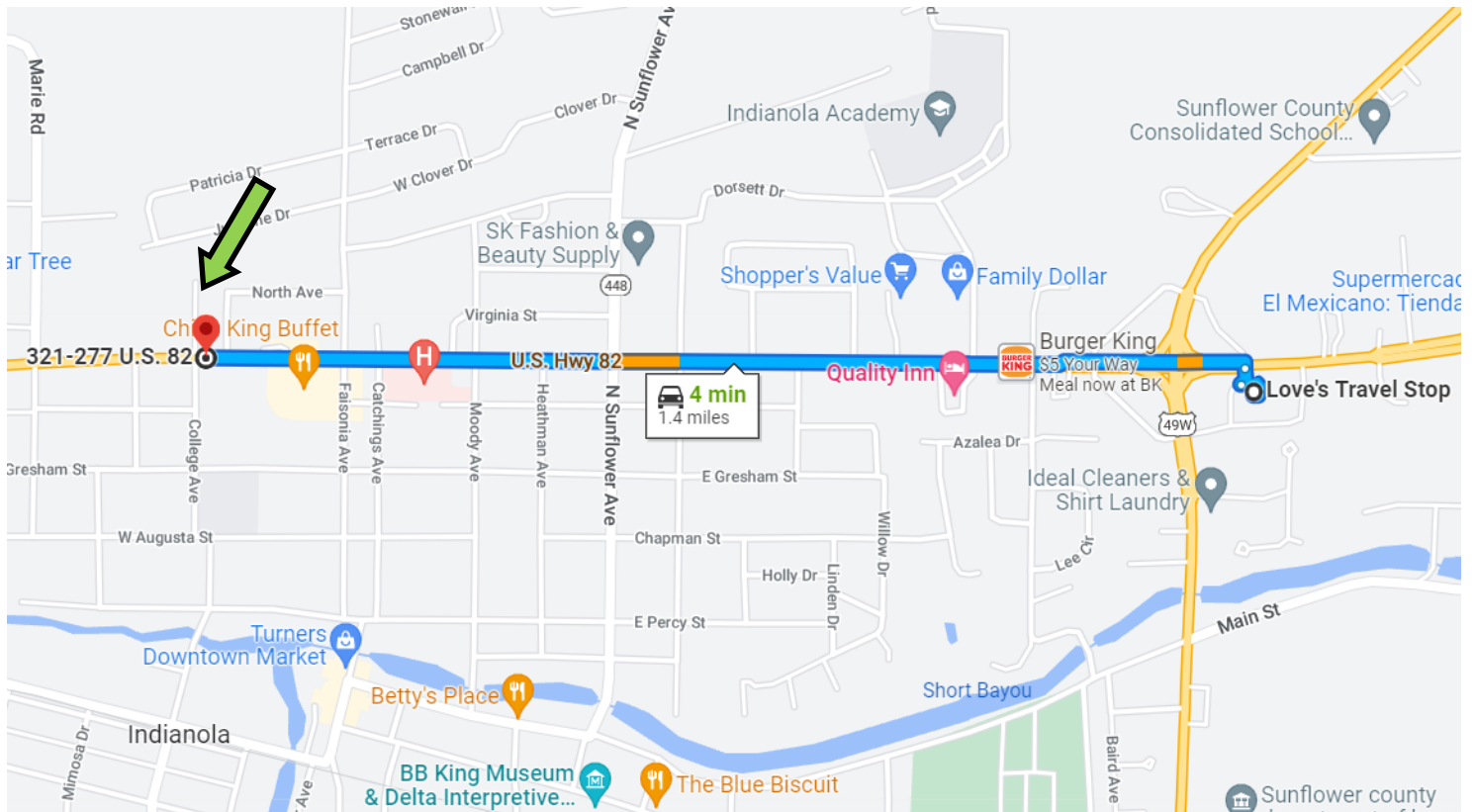
EMERSON LOVELACE, REALTOR®
Emerson@TomSmithLand.com
662.441.2500 **office** | 662.715.3302 **cell**



TomSmithLandandHomes.com

Information is believed to be accurate but not guaranteed.

DIRECTIONAL MAP



Address: 233 Highway 82 West Indianola, MS 38751

Directions from the intersection of Hwy 49 & Hwy 82 in Indianola, MS: Travel West on Highway 82, passing McDonald's and in 1.3 miles the destination will be on the left. [Click for Google Map directions.](#)

Call me today!

EMERSON LOVELACE, REALTOR®
Emerson@TomSmithLand.com
662.441.2500 **office** | 662.715.3302 **cell**



TomSmithLandandHomes.com

Information is believed to be accurate but not guaranteed.