

# Cozy House in Cleveland

## Bolivar County, MS



211 South Fifth Ave Cleveland, MS 38732

\$95,000

Take a look at this cozy home in Cleveland, Bolivar County, MS. This 1,427 square foot home has two bedrooms and one bathroom, a large living room with a separate dining room, a fenced-in backyard, and is located on a corner lot. This home is within walking distance of Delta State University and would make a great rental property. Call Tracey Bell today for a private showing, cell (662) 719-4720 or office (662)441-2500.

**Directions from the corner of Hwy 61 and Hwy 8 in Cleveland, MS:** Travel West on Hwy 8 towards Delta State University for 1.0 miles, turn left onto N. Fifth Ave and in 0.4 miles the destination will be on the left.



*Call me today!*

**TRACEY BELL**, MANAGING BROKER  
Tracey@TomSmithLand.com  
662.441.2500 **office** | 662.719.4720 **cell**

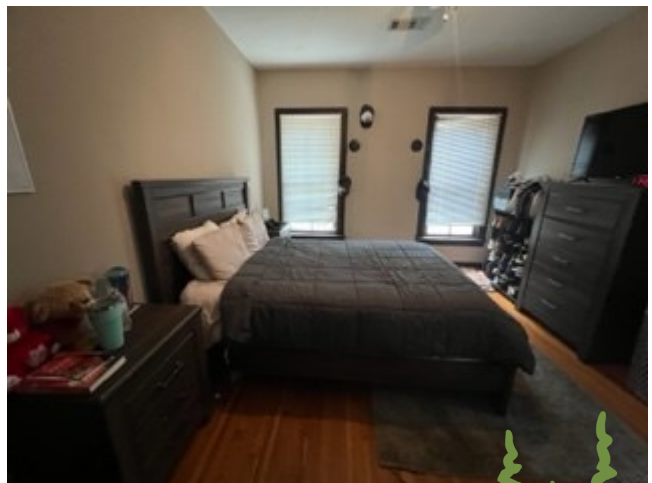


Expect More. Get More.

**TomSmithLandandHomes.com**

Information is believed to be accurate but not guaranteed.





*Call me today!*

**TRACEY BELL**, MANAGING BROKER  
 Tracey@TomSmithLand.com  
 662.441.2500 **office** | 662.719.4720 **cell**



**TomSmithLandandHomes.com**

Information is believed to be accurate but not guaranteed.



# AERIAL MAP



[Click for Interactive Map](#)

*Call me today!*

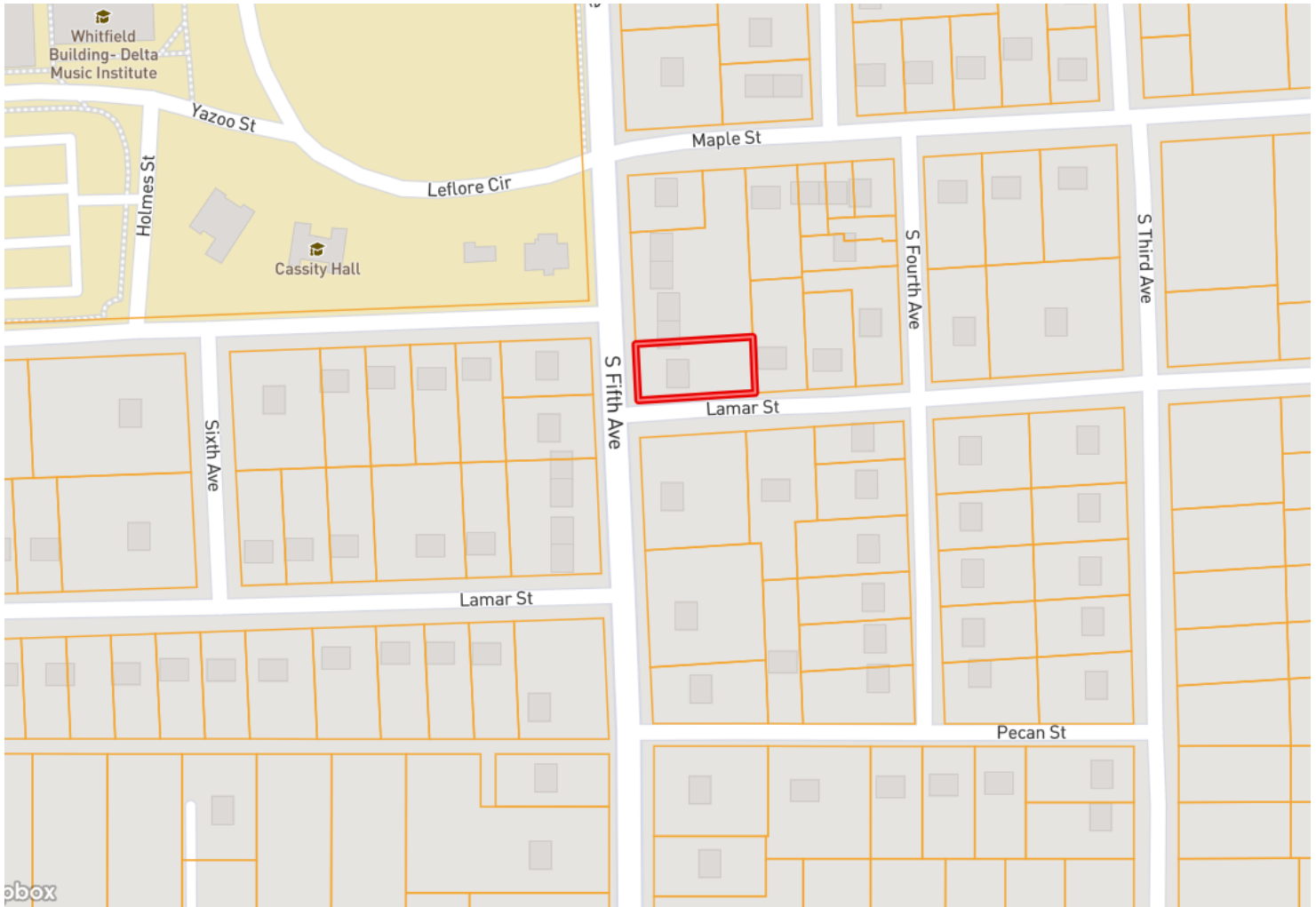
**TRACEY BELL**, MANAGING BROKER  
Tracey@TomSmithLand.com  
662.441.2500 **office** | 662.719.4720 **cell**



**TomSmithLandandHomes.com**

Information is believed to be accurate but not guaranteed.

# OWNERSHIP MAP



*Call me today!*

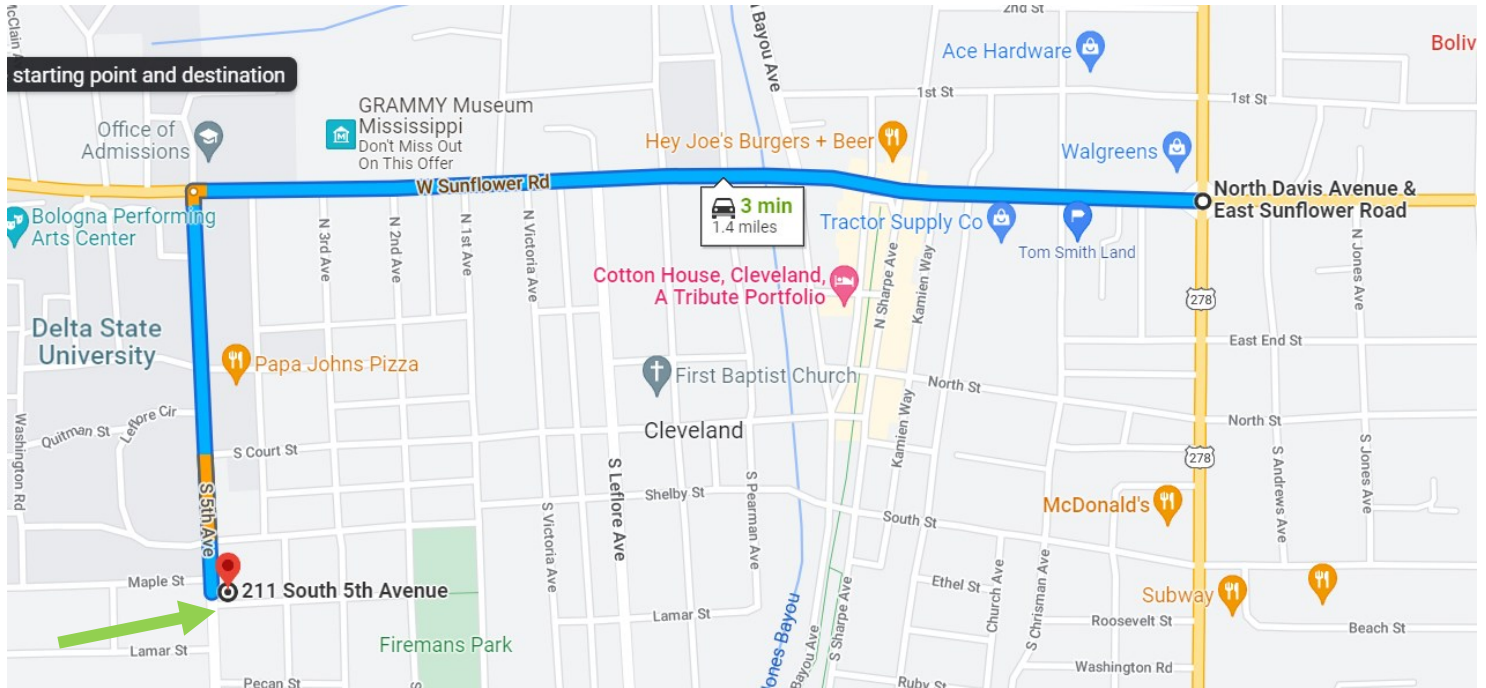
**TRACEY BELL**, MANAGING BROKER  
Tracey@TomSmithLand.com  
662.441.2500 **office** | 662.719.4720 **cell**



**TomSmithLandandHomes.com**

Information is believed to be accurate but not guaranteed.

# DIRECTIONAL MAP



**211 South Fifth Ave. Cleveland, MS 38732**

**Directions from the corner of HWY 61 and HWY 8 in Cleveland, MS:** Travel West on Hwy 8 towards Delta State University for 1.0 miles, turn left onto N. Fifth Ave and in 0.4 miles the destination will be on the left. [Click for Google Map directions.](#)

*Call me today!*

**TRACEY BELL**, MANAGING BROKER  
Tracey@TomSmithLand.com  
662.441.2500 **office** | 662.719.4720 **cell**



Expect More. Get More.

**TomSmithLandandHomes.com**

Information is believed to be accurate but not guaranteed.