

# 6.9± Acre Homesite in Grenada County, MS

**\$35,000**



Are you looking for a piece of property to build a home close to a Lake? This 6.9± surveyed acre tract is located off Eddie Willis Drive in Grenada County, MS, and situated just 10 minutes east of Grenada Lake in Gore Springs, MS. The timber make-up is a mixture of hardwoods and pines. The property once had a trailer and features a septic system, and water lines ran from the road.

You can create a beautiful gravel drive to your dream home with a little work. There is paved road frontage, and utilities are available from the road. Call Kadero Edley today for your private showing!

**Google Maps Link**

*Call me today!*

**KADERO EDLEY**, REALTOR®  
Kadero@TomSmithLand.com  
601.898.2772 **office** | 601.488.7000 **cell**



**TomSmithLandandHomes.com**

Information is believed to be accurate but not guaranteed.







*Call me today!*



**KADERO EDLEY, REALTOR®**  
Kadero@TomSmithLand.com  
601.898.2772 **office** | 601.488.7000 **cell**



Expect More. Get More.

**TomSmithLandandHomes.com**

Information is believed to be accurate but not guaranteed.



# Aerial Map



[Click here for Interactive Map](#)

*Call me  
today!*

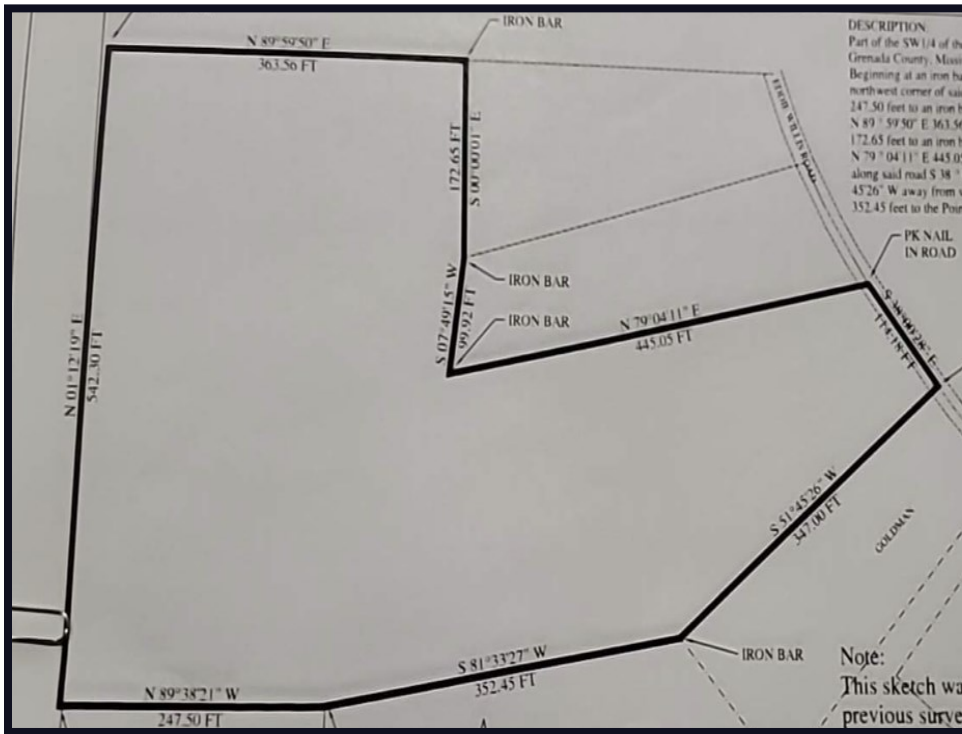
**KADERO EDLEY**, REALTOR®  
Kadero@TomSmithLand.com  
601.898.2772 **office** | 601.488.7000 **cell**



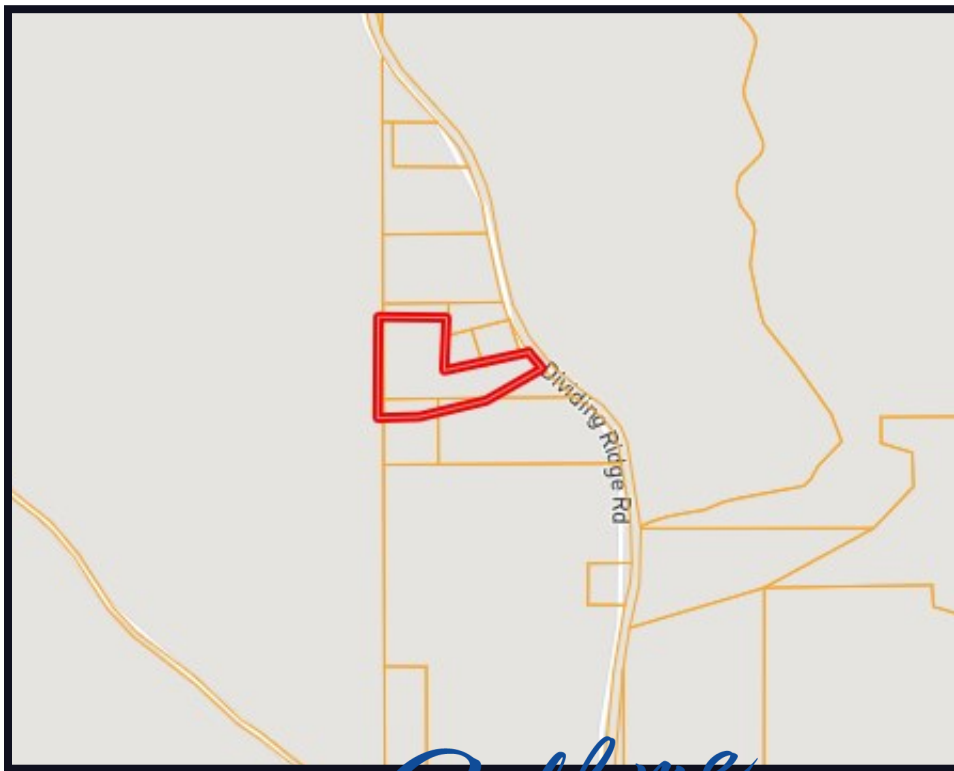
Expect More. Get More.

**TomSmithLandandHomes.com**

Information is believed to be accurate but not guaranteed.



# Property Survey



# Ownership Map

*Call me today!*

**KADERO EDLEY, REALTOR®**

Kadero@TomSmithLand.com

601.898.2772 **office** | 601.488.7000 **cell**

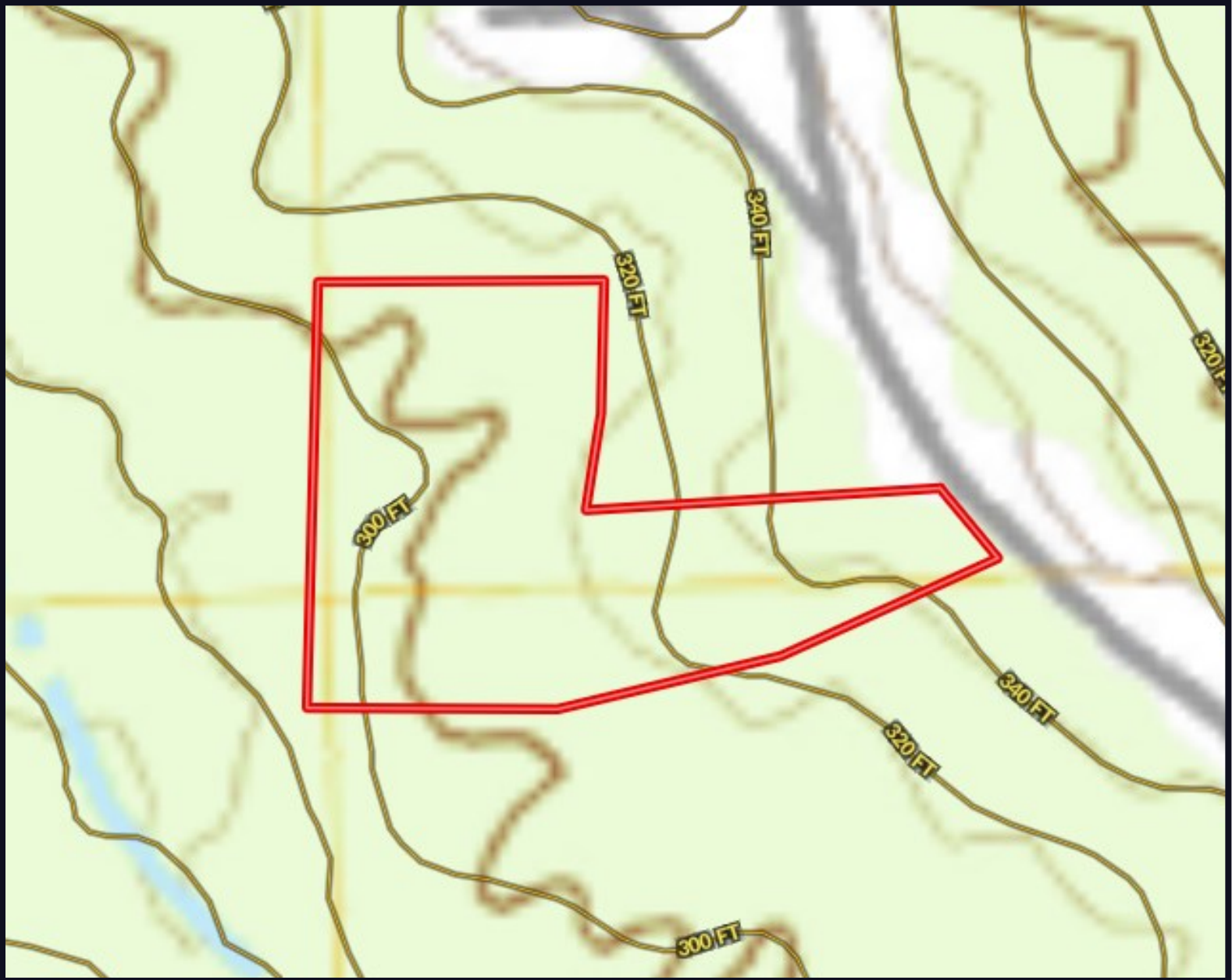


Expect More. Get More.

# TomSmithLandandHomes.com

Information is believed to be accurate but not guaranteed.

# Topographic Map



*Call me  
today!*

**KADERO EDLEY**, REALTOR®  
Kadero@TomSmithLand.com  
601.898.2772 **office** | 601.488.7000 **cell**



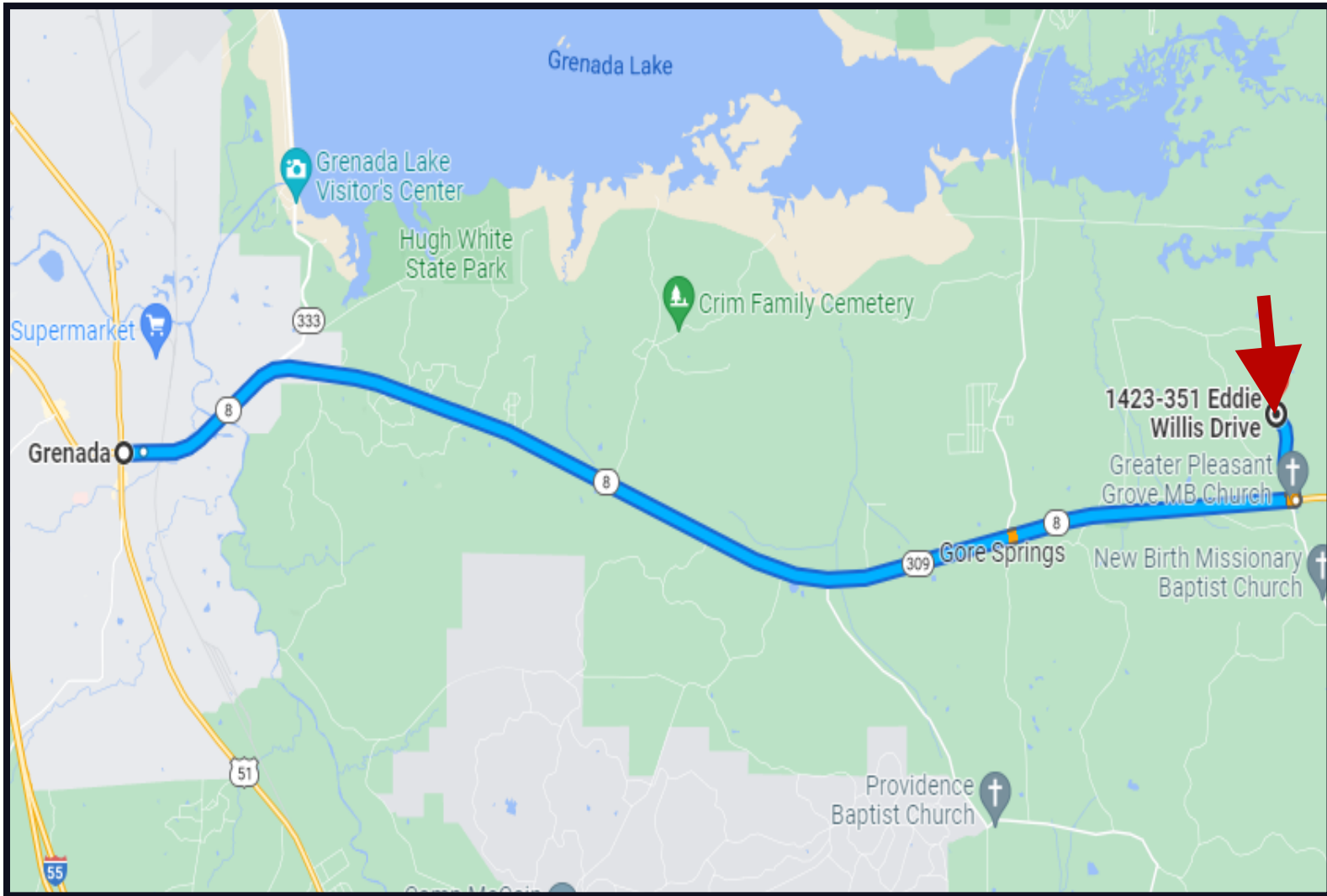
Expect More. Get More.

**TomSmithLandandHomes.com**

Information is believed to be accurate but not guaranteed.



# Directional Map



**Directions from Sunset Drive in Grenada, MS:** Travel northeast on Sunset Drive for 0.2 miles. Continue onto Hwy 8 E/Lakeview Drive for 15.2 miles. Turn left onto Eddie Willis Drive for 1 mile and the property will be on your left.

[Google Maps Link](#)

*Call me today!*

**KADERO EDLEY, REALTOR®**  
Kadero@TomSmithLand.com  
601.898.2772 **office** | 601.488.7000 **cell**

**Tom  
Smith  
LAND AND  
HOMES**  
Expect More. Get More.

**TomSmithLandandHomes.com**

Information is believed to be accurate but not guaranteed.



LandReport  
2011-2022  
AMERICA'S  
**BEST**  
BROKERAGES