

Recreational/Hunting Tract 75.7+/- Acres in Noxubee County, MS



\$260,000

This 75.7+/- acre tract in Noxubee County, MS, has a lot to offer. The front 9.2+/- acres are in the city limits of Macon, MS, which gives the property access to city water and sewer. The property consists of approximately 32+/- acres of pastureland that has been crossed-fenced. The rest of the property comprises tree lines, timber pockets, and lime-stone quarries. There is also a quarter-acre pond in the pasture. The limestone quarries could be turned into beautiful lakes for fishing or recreational purposes. Plenty of deer and other game sign was present while walking the property. Many home sites are available throughout, and it is only minutes from Macon, MS, and Highway 45. To schedule, a private showing, call or text Walker!

Directions from Noxubee Medical Complex: Travel north on Hospital Drive towards US-45 South Bus / North Jefferson Street, then in 400 feet, turn right onto US-45 North Bus / North Jefferson Street. Then in 1 mile, the property will be on your left.



Call me today!

WALKER TRANUM, REALTOR®
Walker@TomSmithHomes.com
662.268.6333 office | 662.769.1442 cell



TomSmithLandandHomes.com

Information is believed to be accurate but not guaranteed



LandReport
2011-2022
AMERICA'S
BEST
BROKERAGES

Call me today!

WALKER TRANUM, REALTOR®
Walker@TomSmithHomes.com
662.268.6333 office | 662.769.1442 cell



TomSmithLandandHomes.com

Information is believed to be accurate but not guaranteed.



Call me today!

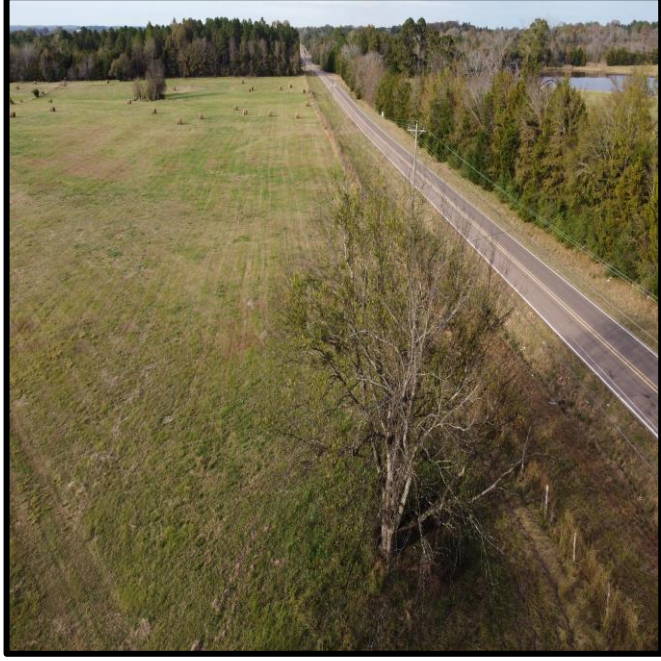
WALKER TRANUM, REALTOR®
Walker@TomSmithHomes.com
662.268.6333 office | 662.769.1442 cell



TomSmithLandandHomes.com

Information is believed to be accurate but not guaranteed.

LandReport
2011-2022
AMERICA'S
BEST
BROKERAGES



Call me today!

WALKER TRANUM, REALTOR®
Walker@TomSmithHomes.com
662.268.6333 office | 662.769.1442 cell



LandReport
2011-2022
AMERICA'S
BEST
BROKERAGES

TomSmithLandandHomes.com

Information is believed to be accurate but not guaranteed.



Call me today!

WALKER TRANUM, REALTOR®
Walker@TomSmithHomes.com
662.268.6333 office | 662.769.1442 cell



TomSmithLandandHomes.com

Information is believed to be accurate but not guaranteed.

LandReport
2011-2022
AMERICA'S
BEST
BROKERAGES



LandReport
2011-2022
AMERICA'S
BEST
BROKERAGES

Call me today!

WALKER TRANUM, REALTOR®
Walker@TomSmithHomes.com
662.268.6333 office | 662.769.1442 cell



TomSmithLandandHomes.com

Information is believed to be accurate but not guaranteed.



Call me today!

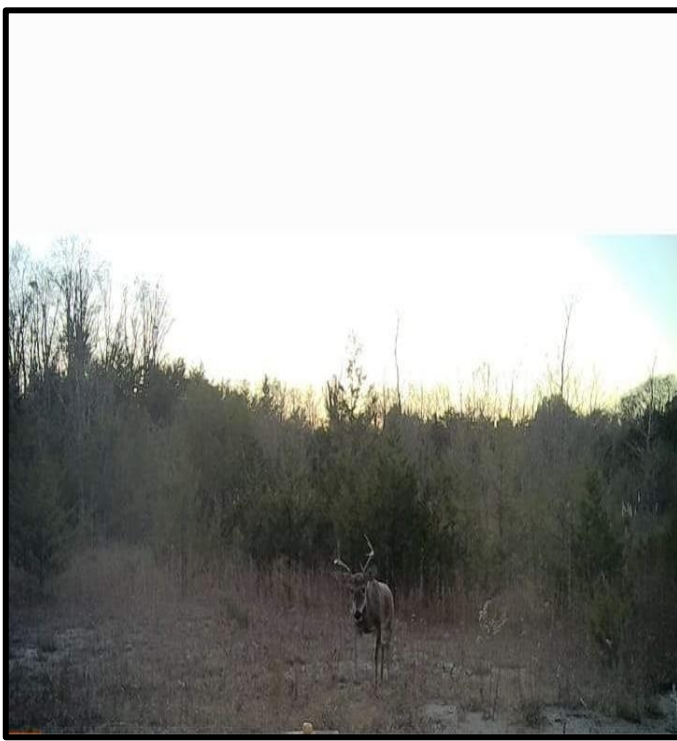
WALKER TRANUM, REALTOR®
Walker@TomSmithHomes.com
662.268.6333 office | 662.769.1442 cell



LandReport
2011-2022
AMERICA'S
BEST
BROKERAGES

TomSmithLandandHomes.com

Information is believed to be accurate but not guaranteed.



Call me today!

WALKER TRANUM, REALTOR®
Walker@TomSmithHomes.com
662.268.6333 office | 662.769.1442 cell

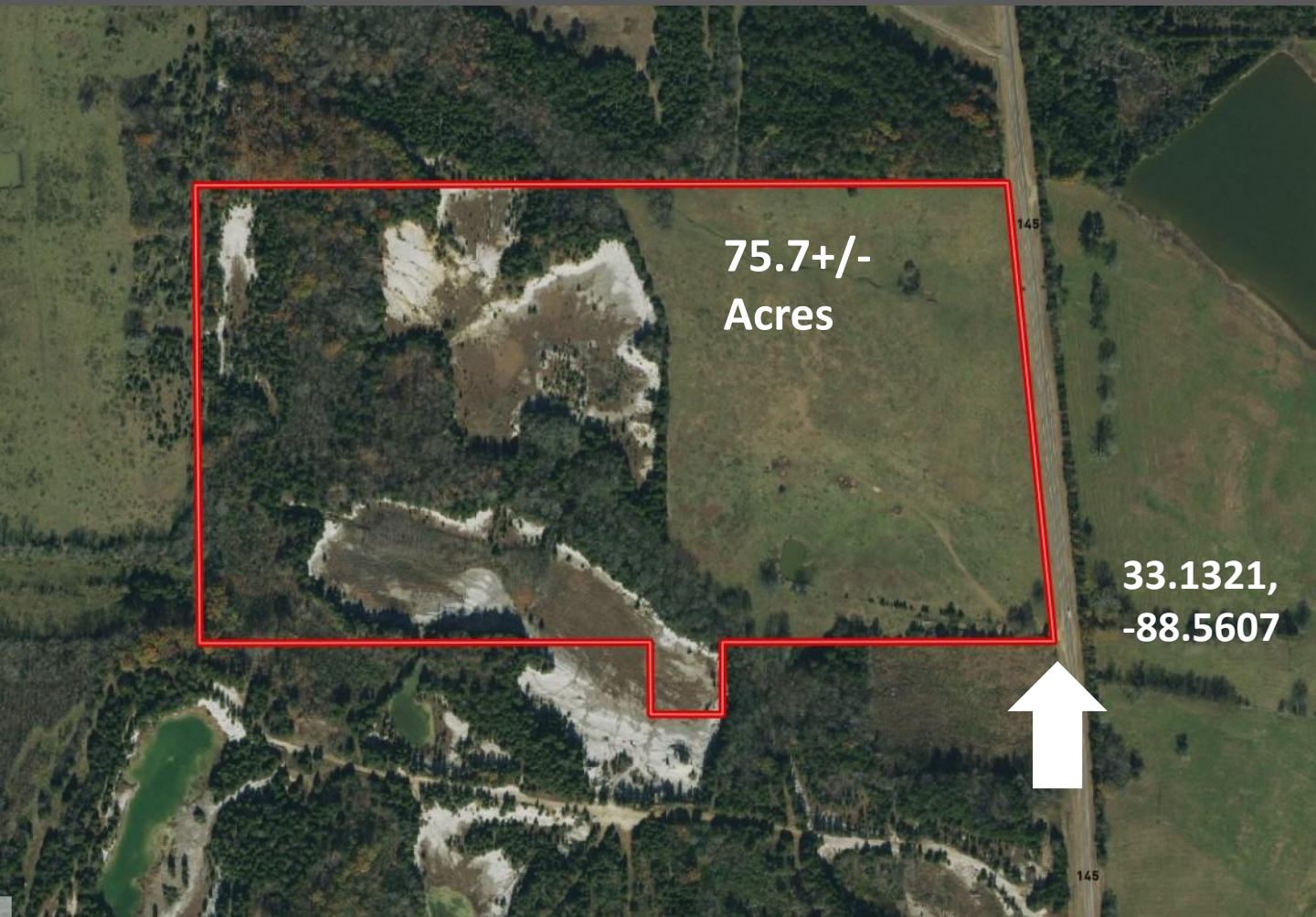


LandReport
2011-2022
AMERICA'S
BEST
BROKERAGES

TomSmithLandandHomes.com

Information is believed to be accurate but not guaranteed.

Aerial Map



Click [Here](#) for Interactive Link



Call me today!

WALKER TRANUM, REALTOR®
Walker@TomSmithHomes.com
662.268.6333 office | 662.769.1442 cell



TomSmithLandandHomes.com

Information is believed to be accurate but not guaranteed.

Flood Map



Call me today!

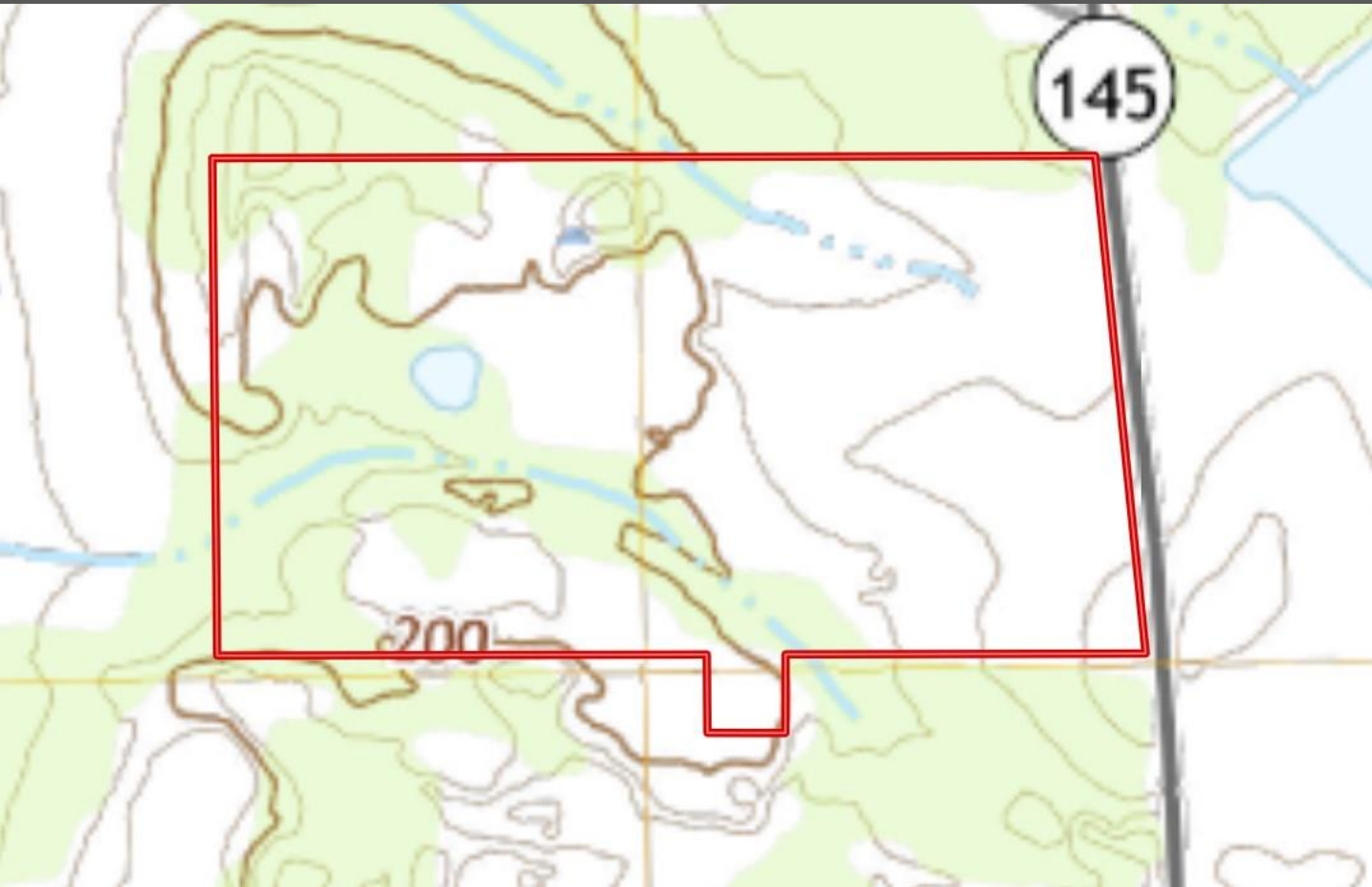
WALKER TRANUM, REALTOR®
Walker@TomSmithHomes.com
662.268.6333 office | 662.769.1442 cell



TomSmithLandandHomes.com

Information is believed to be accurate but not guaranteed.

Topography Map



Call me today!

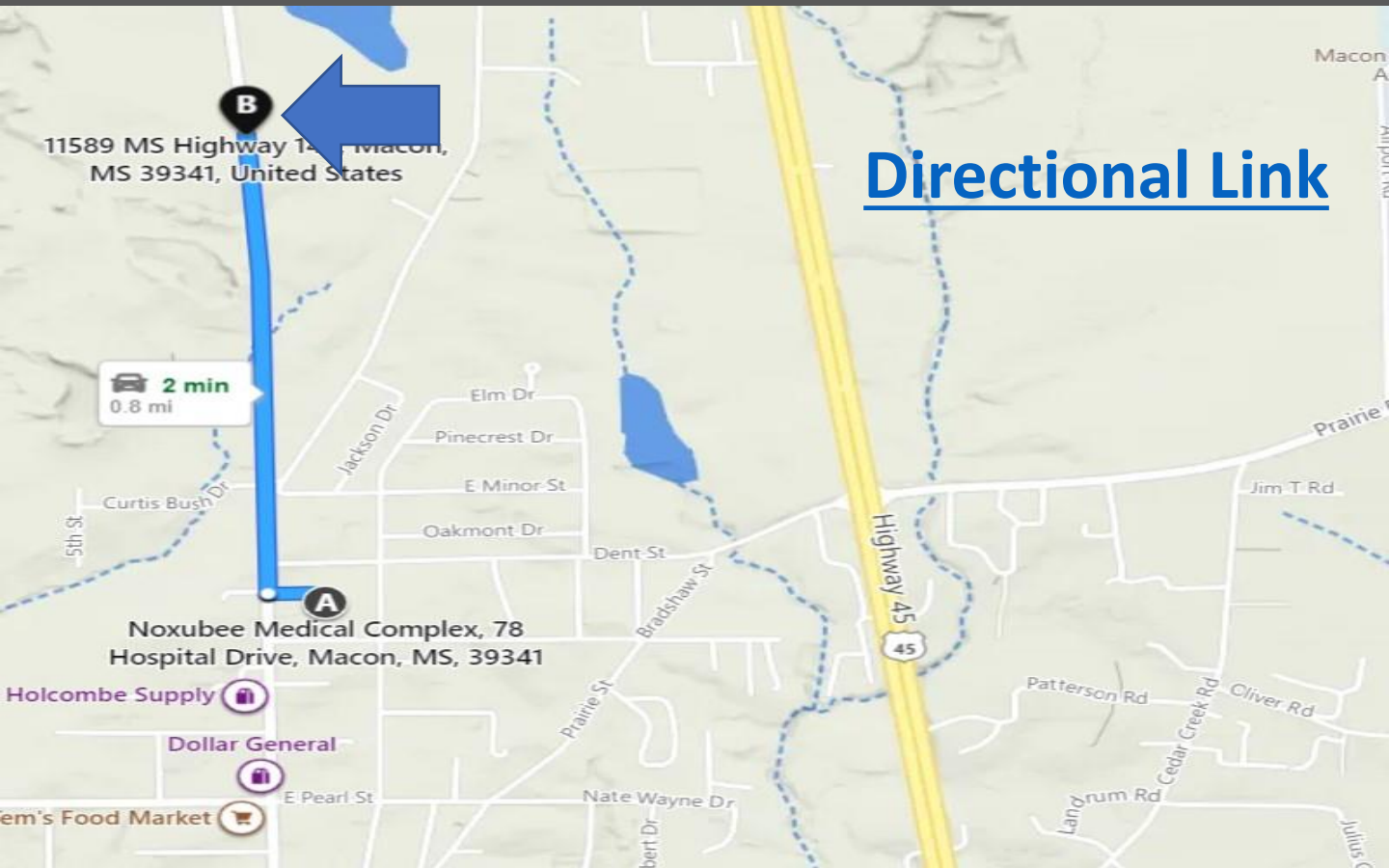
WALKER TRANUM, REALTOR®
Walker@TomSmithHomes.com
662.268.6333 office | 662.769.1442 cell



TomSmithLandandHomes.com

Information is believed to be accurate but not guaranteed.

Directional Map



[Directional Link](#)

Directions from Noxubee Medical Complex: Head north on Hospital Drive towards US-45 South Bus / North Jefferson Street and then in 400 feet turn right onto US-45 North Bus / North Jefferson Street. Then in 1 mile the property will be on your left.



Call me today!

WALKER TRANUM, REALTOR®
Walker@TomSmithHomes.com
662.268.6333 office | 662.769.1442 cell



TomSmithLandandHomes.com

Information is believed to be accurate but not guaranteed.

