

# Recreational/Hunting Tract

## 75.7+/- Acres in Noxubee County, MS



# \$260,000

This 75.7+/- acre tract in Noxubee County, MS has a lot to offer. The front 9.2+/- acres are in the city limits of Macon, MS which gives the property access to city water and sewer. The property consist of approximately 32+/- acres of pasture-land that has been crossed fenced. The rest of the property is made up of trees lines, timber pockets, and lime-stone quarries. There is also a quarter acre pond in the pasture. The lime-stone quarries could be turned into a beautiful lakes for fishing or recreational purposes. Plenty of deer and other game sign was present while walking the property. There are many home sites available through out, and it is only minutes from Macon ,MS and Highway 45. To schedule a private showing, call or text Walker!

**Directions from Noxubee Medical Complex:** Head north on Hospital Drive towards US-45 South Bus / North Jefferson Street and then in 400 feet turn right onto US-45 North Bus / North Jefferson Street. Then in 1 mile the property will be on your left.



*Call me today!*

**WALKER TRANUM, REALTOR®**  
Walker@TomSmithHomes.com  
662.268.6333 **office** | 662.769.1442 **cell**



# TomSmithLandandHomes.com

Information is believed to be accurate but not guaranteed



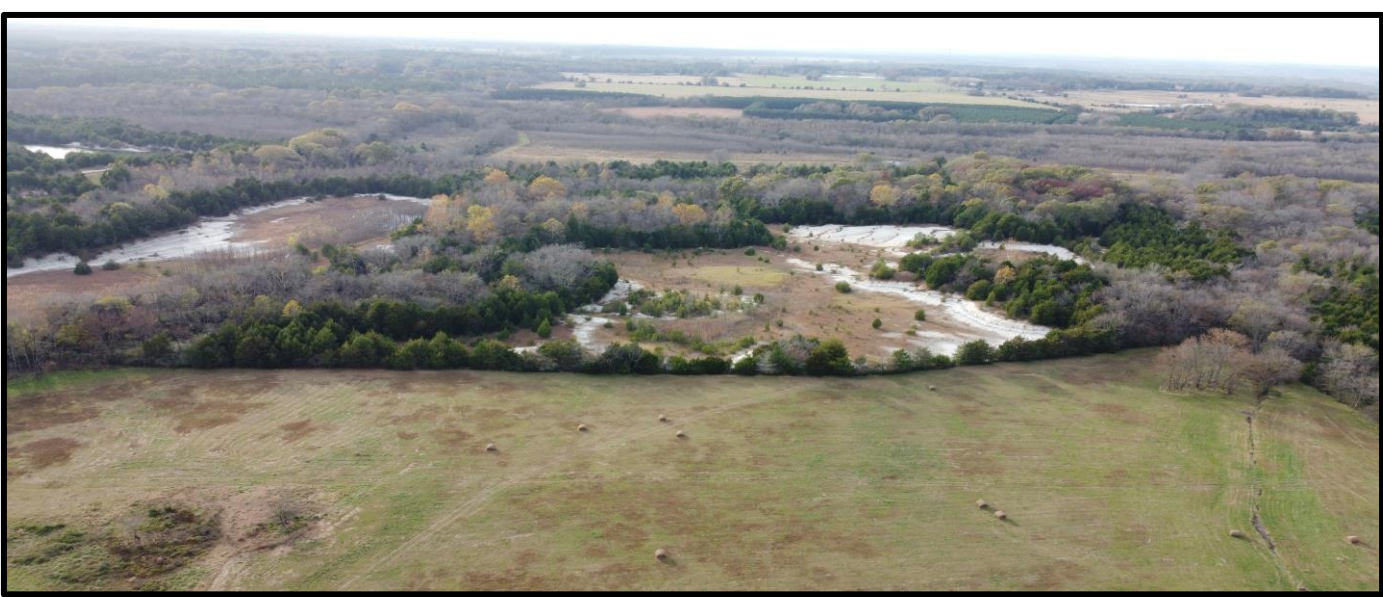
*Call me today!*

**WALKER TRANUM, REALTOR®**  
Walker@TomSmithHomes.com  
662.268.6333 **office** | 662.769.1442 **cell**



**TomSmithLandandHomes.com**

Information is believed to be accurate but not guaranteed.



*Call me today!*

**WALKER TRANUM, REALTOR®**  
 Walker@TomSmithHomes.com  
 662.268.6333 office | 662.769.1442 cell



**TomSmithLandandHomes.com**

Information is believed to be accurate but not guaranteed.



*Call me today!*

**WALKER TRANUM, REALTOR®**  
Walker@TomSmithHomes.com  
662.268.6333 office | 662.769.1442 cell



**TomSmithLandandHomes.com**

Information is believed to be accurate but not guaranteed.



*Call me today!*

**WALKER TRANUM**, REALTOR®  
 Walker@TomSmithHomes.com  
 662.268.6333 office | 662.769.1442 cell



**TomSmithLandandHomes.com**

Information is believed to be accurate but not guaranteed.



*Call me today!*

**WALKER TRANUM, REALTOR®**  
 Walker@TomSmithHomes.com  
 662.268.6333 office | 662.769.1442 cell



**TomSmithLandandHomes.com**

Information is believed to be accurate but not guaranteed.

LandReport  
 2011-2022  
 AMERICA'S  
**BEST**  
 BROKERAGES



*Call me today!*

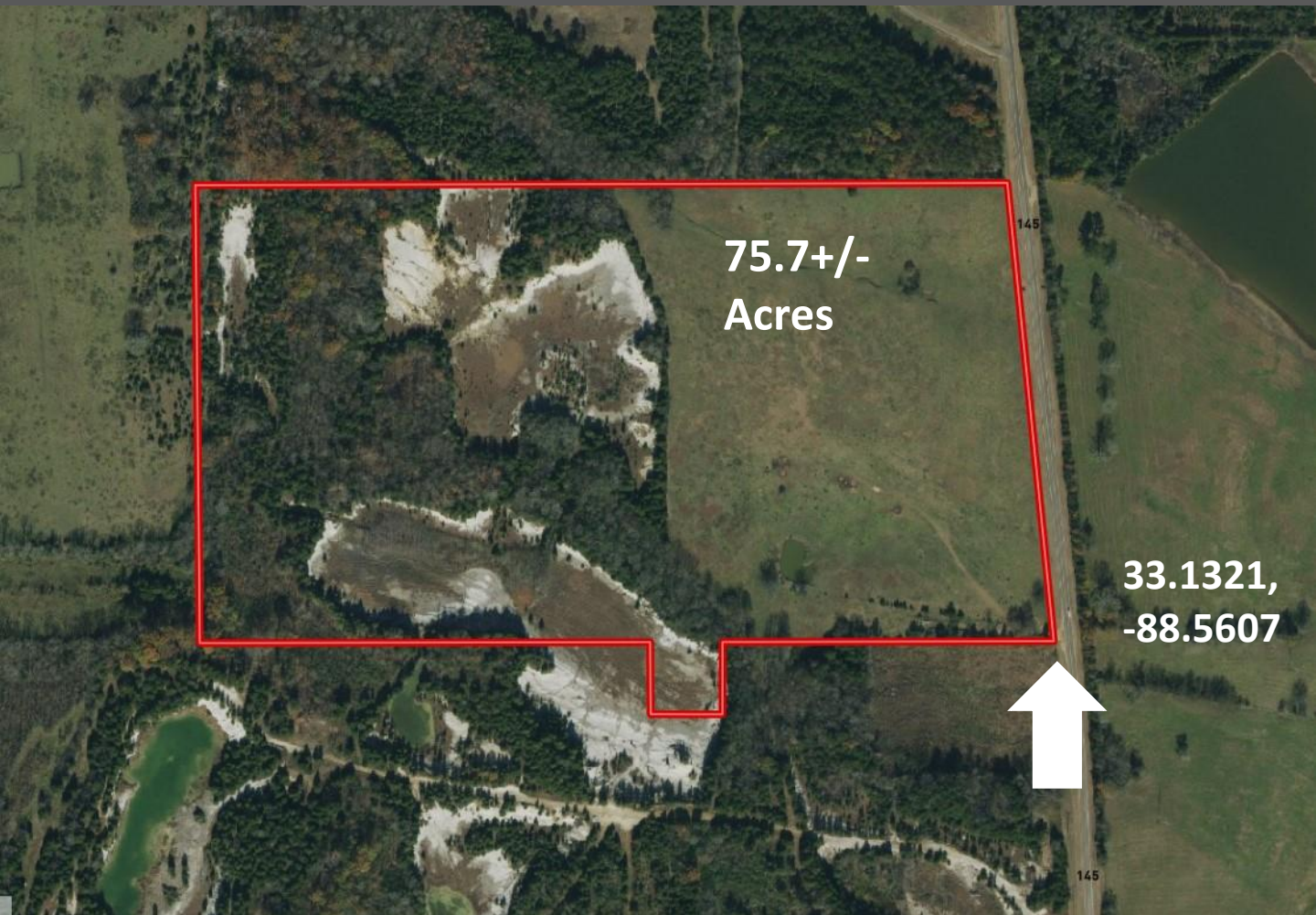
**WALKER TRANUM**, REALTOR®  
Walker@TomSmithHomes.com  
662.268.6333 **office** | 662.769.1442 **cell**



**TomSmithLandandHomes.com**

Information is believed to be accurate but not guaranteed.

# Aerial Map



Click [Here](#) for Interactive Link



*Call me today!*

**WALKER TRANUM**, REALTOR®  
Walker@TomSmithHomes.com  
662.268.6333 office | 662.769.1442 cell



**TomSmithLandandHomes.com**

Information is believed to be accurate but not guaranteed.

# Flood Map



*Call me today!*

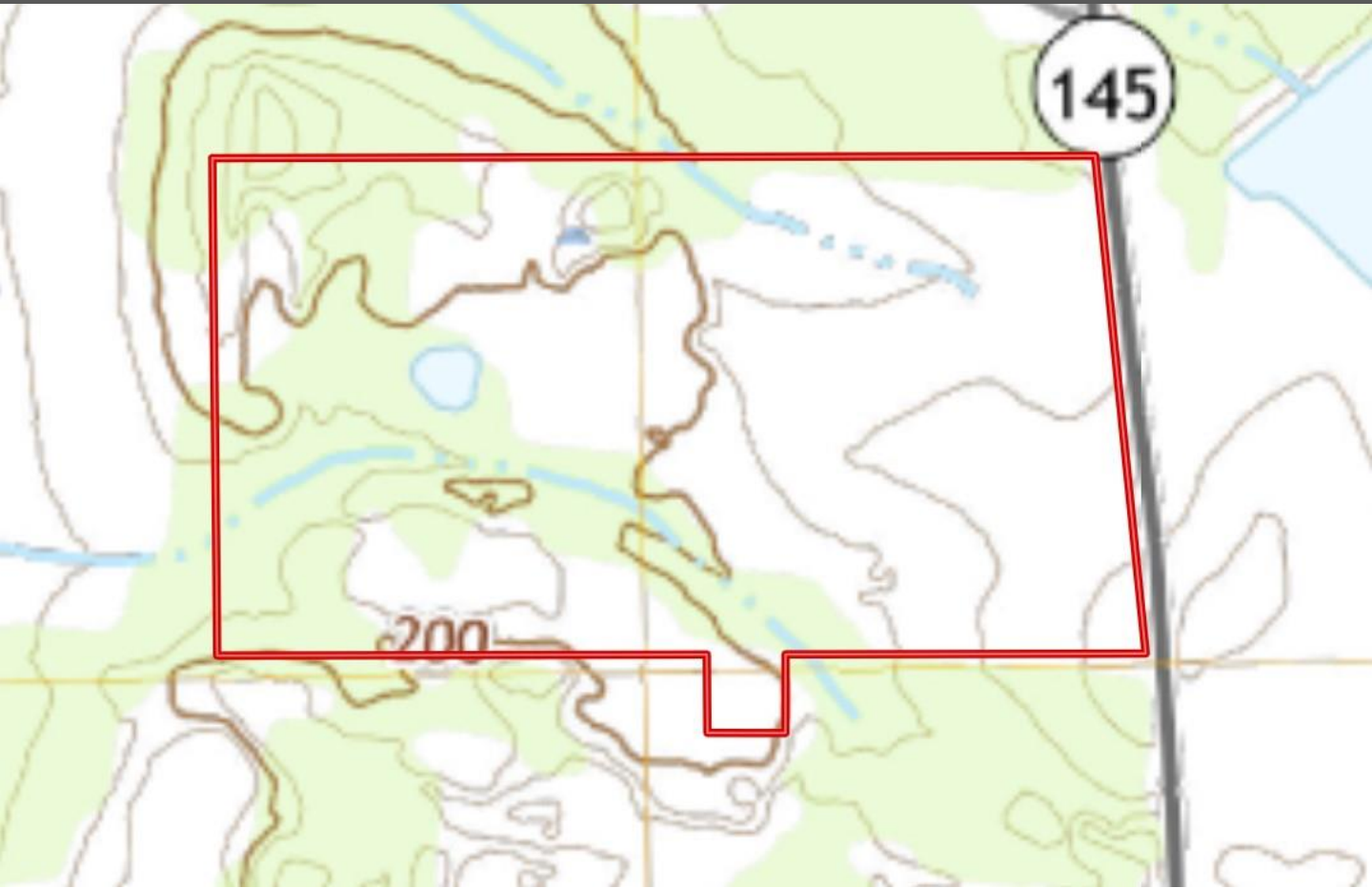
**WALKER TRANUM, REALTOR®**  
Walker@TomSmithHomes.com  
662.268.6333 **office** | 662.769.1442 **cell**



**TomSmithLandandHomes.com**

Information is believed to be accurate but not guaranteed.

# Topography Map



*Call me today!*

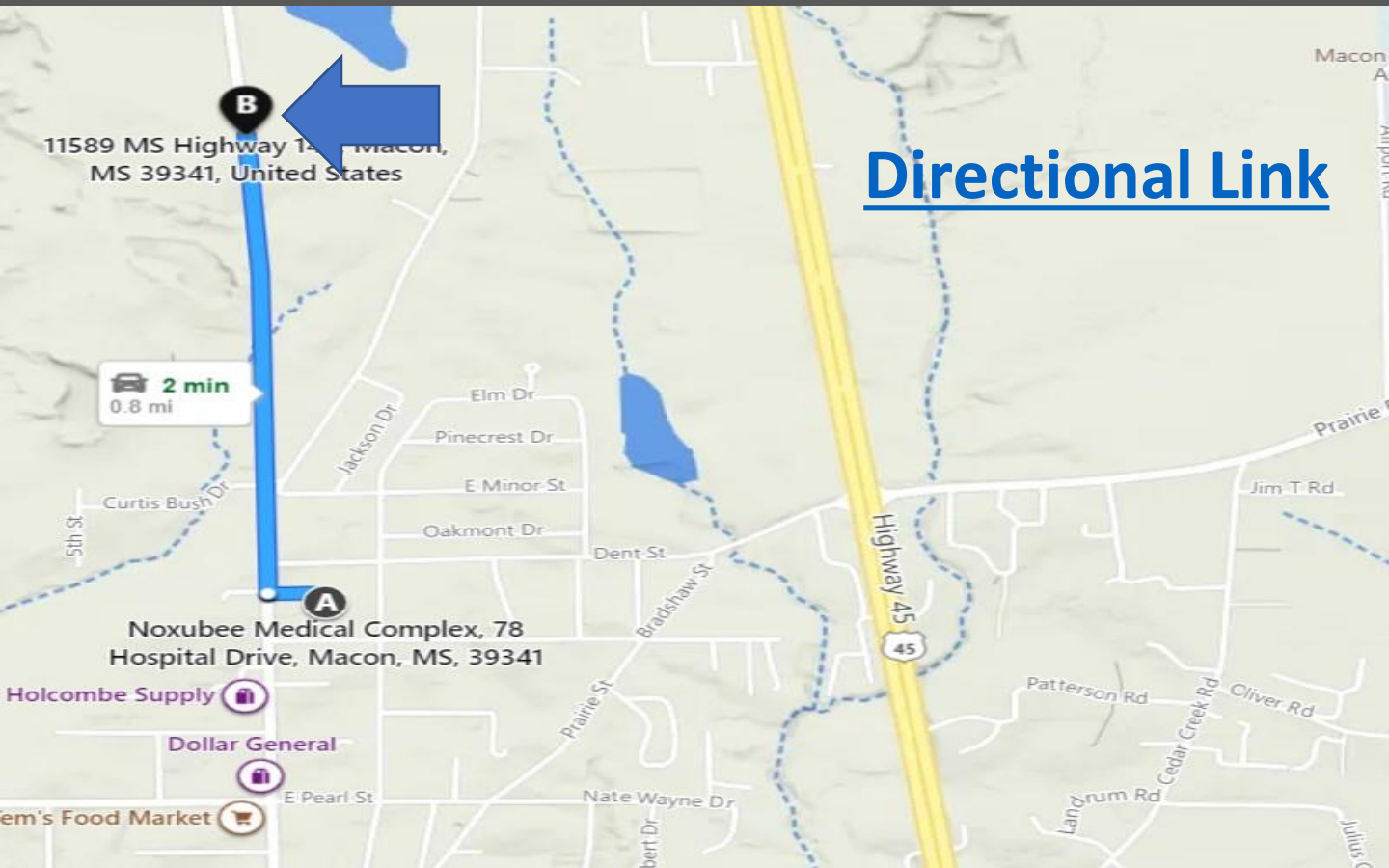
**WALKER TRANUM**, REALTOR®  
Walker@TomSmithHomes.com  
662.268.6333 office | 662.769.1442 cell



**TomSmithLandandHomes.com**

Information is believed to be accurate but not guaranteed.

# Directional Map



**Directions from Noxubee Medical Complex:** Head north on Hospital Drive towards US-45 South Bus / North Jefferson Street and then in 400 feet turn right onto US-45 North Bus / North Jefferson Street. Then in 1 mile the property will be on your left.



*Call me today!*

**WALKER TRANUM, REALTOR®**  
Walker@TomSmithHomes.com  
662.268.6333 **office** | 662.769.1442 **cell**



**TomSmithLandandHomes.com**

Information is believed to be accurate but not guaranteed.