

40.5± ACRE HUNTING TRACT IN MONTGOMERY COUNTY, MS



\$2,469.14/ac



Have you been looking for a place that produces trophy deer and long beards? Welcome to your new 40.5± acre hunting tract in Montgomery County, MS! This 40.5± acre tract is situated 10 minutes northeast of Winona, MS. A 288 sq. ft. shed is minutes from the main 40± acres and has gravel road frontage. Deer signs were noted during the initial inspection. The timber make-up is a mixture of mature hardwoods and pines. The property features a well-established road system making for easy access, and a 0.5± acre food plot location. Each year the property produces trophy deer and turkey! The 40± acre tract can be accessed through a 0.2-mile trail off Springhill Rd. Call Kadero Edley for your private showing today!



Call me today!

KADERO EDLEY, REALTOR®
Kadero@TomSmithLand.com
601.898.2772 **office** | 601.488.7000 **cell**



Expect More. Get More.

TomSmithLandandHomes.com

Information is believed to be accurate but not guaranteed.



Call me today!

KADERO EDLEY, REALTOR®
Kadero@TomSmithLand.com
601.898.2772 office | 601.488.7000 cell



Expect More. Get More.

TomSmithLandandHomes.com

Information is believed to be accurate but not guaranteed.



Call me today!



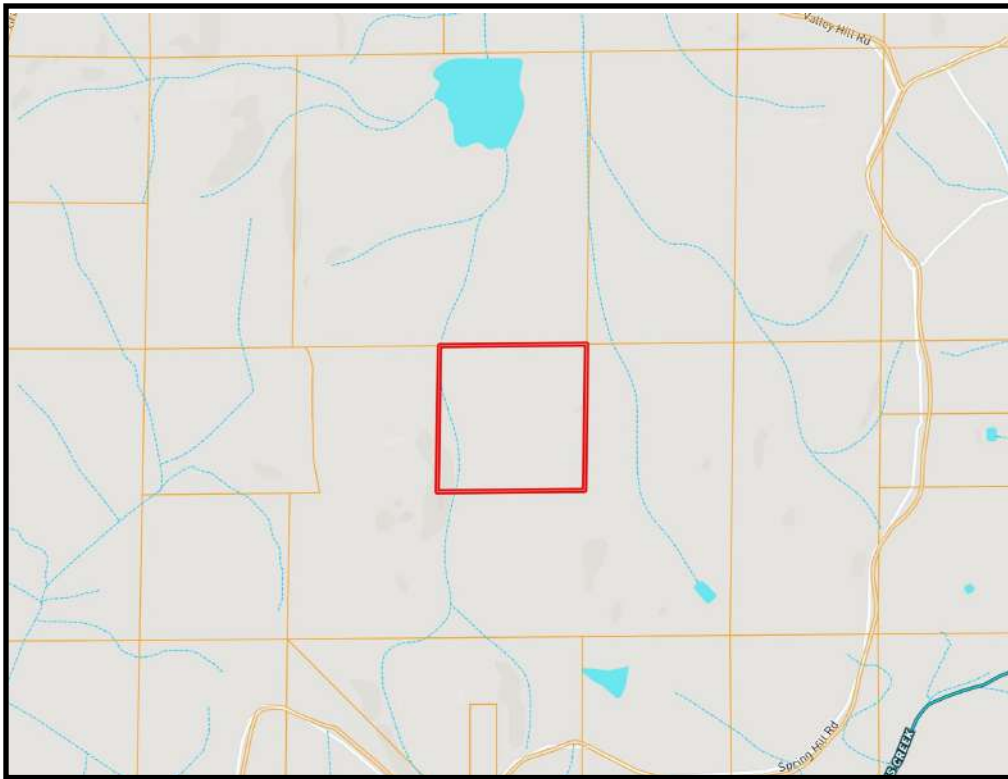
KADERO EDLEY, REALTOR®
Kadero@TomSmithLand.com
601.898.2772 office | 601.488.7000 cell



Expect More. Get More.

TomSmithLandandHomes.com

Information is believed to be accurate but not guaranteed.



Ownership Map



Topo Map

*Call me
today!*

KADERO EDLEY, REALTOR®
Kadero@TomSmithLand.com
601.898.2772 office | 601.488.7000 cell



Expect More. Get More.

TomSmithLandandHomes.com

Information is believed to be accurate but not guaranteed.

Aerial Maps



Call me today!

KADERO EDLEY, REALTOR®
Kadero@TomSmithLand.com
601.898.2772 office | 601.488.7000 cell



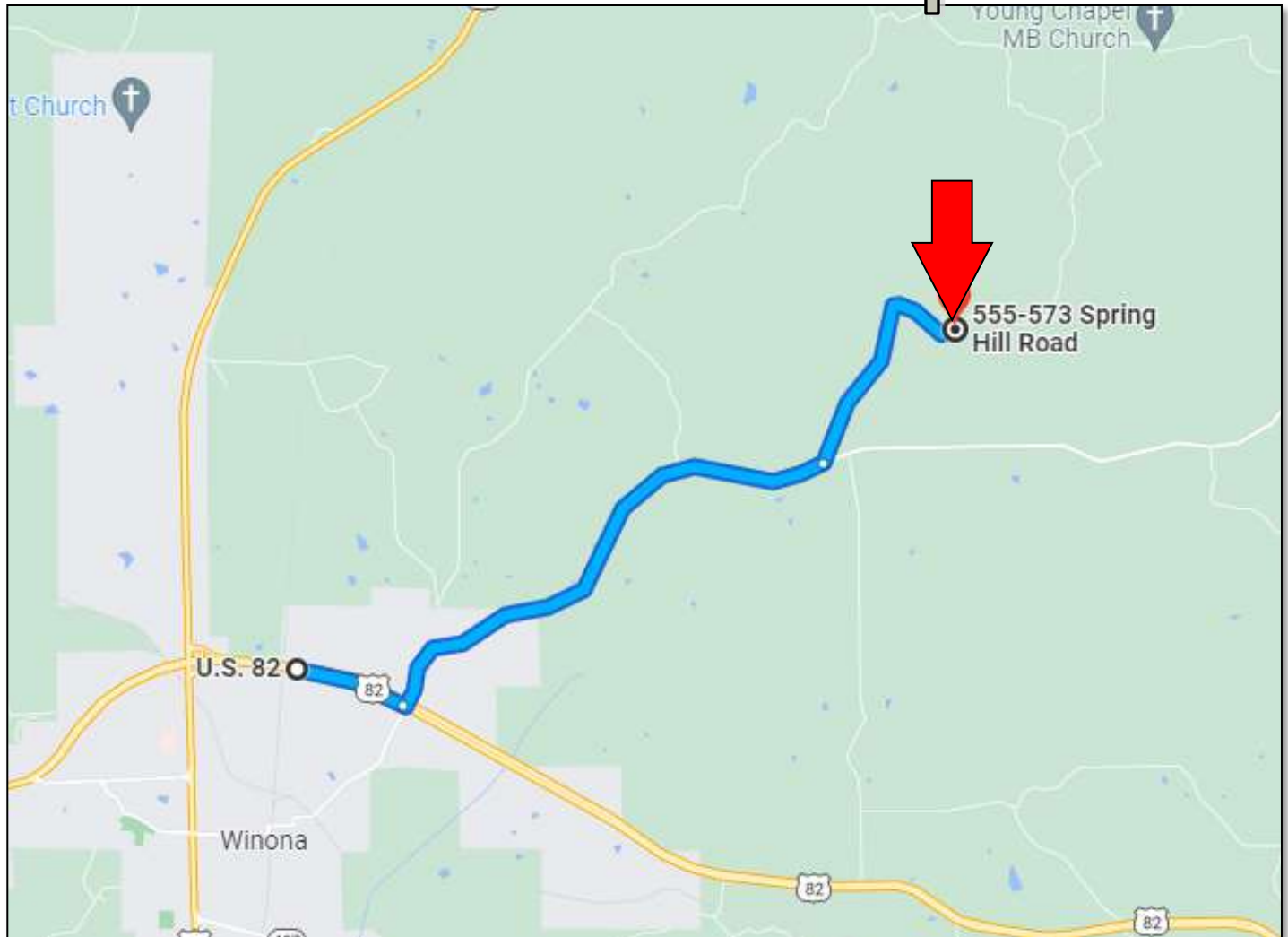
Expect More. Get More.



TomSmithLandandHomes.com

Information is believed to be accurate but not guaranteed.

Directional Map



Directions MS HWY 82 in Winona, MS: Travel east on HWY 82 for 0.7 miles. Turn left onto Lodi Rd for 3.4 miles. Then turn onto Springhill Rd for 1.6 miles and the property will be accessed through 0.2 mile trail on the left.

[Google Maps Link](#)



Call me today!

KADERO EDLEY, REALTOR®
Kadero@TomSmithLand.com
601.898.2772 **office** | 601.488.7000 **cell**



TomSmithLandandHomes.com

Information is believed to be accurate but not guaranteed.