

# Country Living on 2.00 +/- Acres in Marshall County, MS



Don't miss this home on 2.00 +/- acres conveniently located on the east side of Victoria Road approximately 1 mile south of Interstate 22 with easy access to the Memphis Metro Area. The house is a 2016 4 bedroom, 2 bath double wide mobile home containing 1,904 sf of heated area in good condition. Floor covering is hardwood with carpet in the bedrooms. Heating is provided with an electric central unit. Seller added a new metal roof in 2023. The large lot is partially wooded providing plenty of area for children to play. There is a carport for vehicle storage and a shed for your tools and equipment. Call Tom Wiseman today!

**Directions:** From the Victoria Road exit on Interstate 22, travel south on Victoria Road 1 mile to the property on the left.

**Address:** 837 Victoria Road Byhalia, MS 38611 [GOOGLE MAP LINK](#)



**TOM  
WISEMAN**

ASSOCIATE BROKER

Office: 662.268.6333

Cell: 662.317.0467

[TWiseman@TomSmithLand.com](mailto:TWiseman@TomSmithLand.com)



## A Real Estate Expert You Can Trust

[TomSmithLandandHomes.com](http://TomSmithLandandHomes.com)

Information is believed to be accurate but not guaranteed







**TOM WISEMAN**  
 ASSOCIATE BROKER  
 Office: 662.268.6333  
 Cell: 662.317.0467  
 TWiseman@TomSmithLand.com



**A Real Estate Expert You Can Trust**  
 TomSmithLandandHomes.com

Information is believed to be accurate but not guaranteed.







**TOM WISEMAN**  
 ASSOCIATE BROKER  
 Office: 662.268.6333  
 Cell: 662.317.0467  
 TWiseman@TomSmithLand.com



**A Real Estate Expert You Can Trust**  
 TomSmithLandandHomes.com

Information is believed to be accurate but not guaranteed.





# AERIAL MAP



[CLICK HERE FOR AN INTERACTIVE MAP LINK](#)

**TOM WISEMAN**

ASSOCIATE BROKER

Office: 662.268.6333

Cell: 662.317.0467

TWiseman@TomSmithLand.com



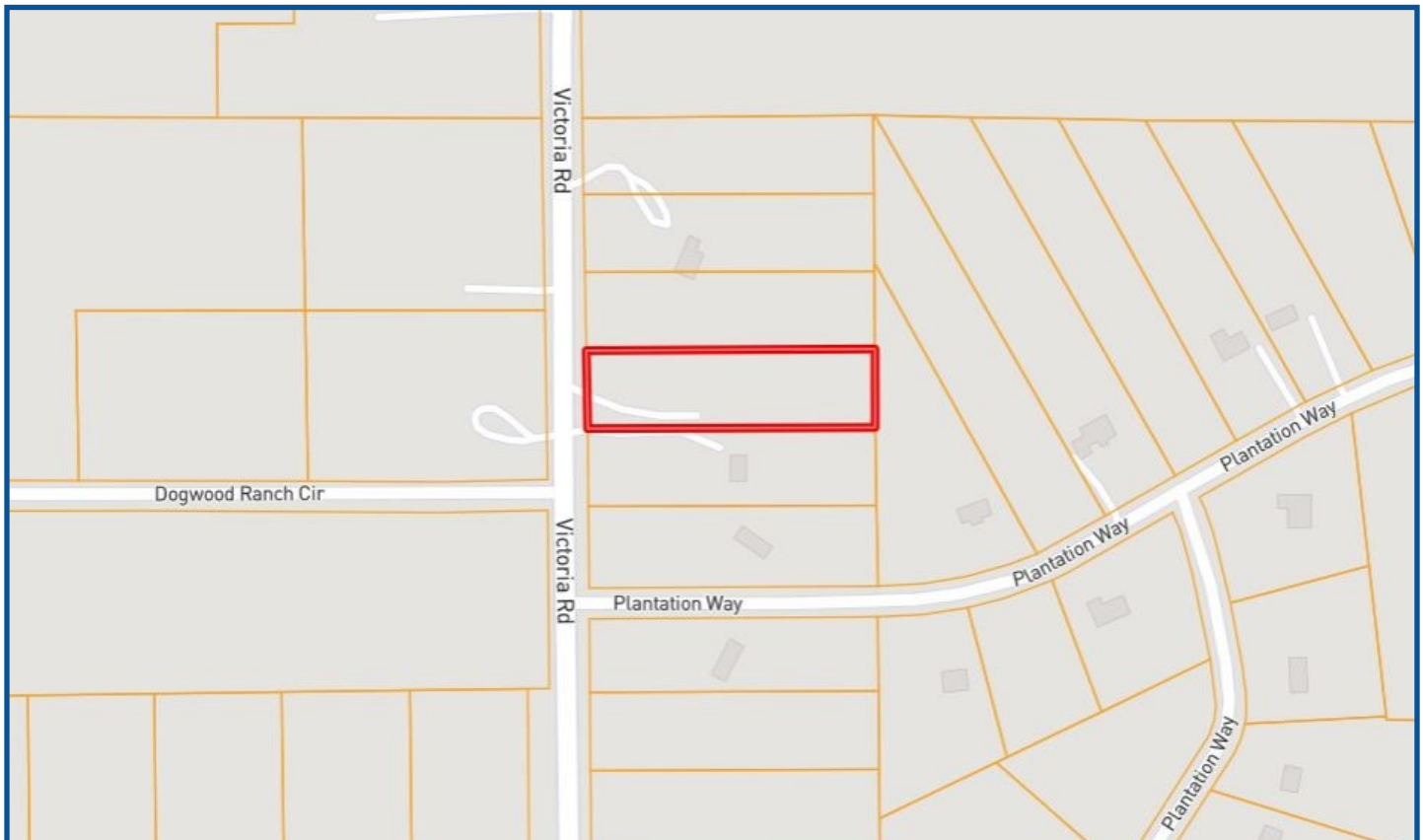
**A Real Estate Expert You Can Trust**

TomSmithLandandHomes.com

Information is believed to be accurate but not guaranteed.



# PROPERTY MAP



*Call me today!*

**TOM WISEMAN**, ASSOCIATE BROKER  
Twiseman@TomSmithLand.com  
662.268.6333 **office** | 662.317.0467 **cell**



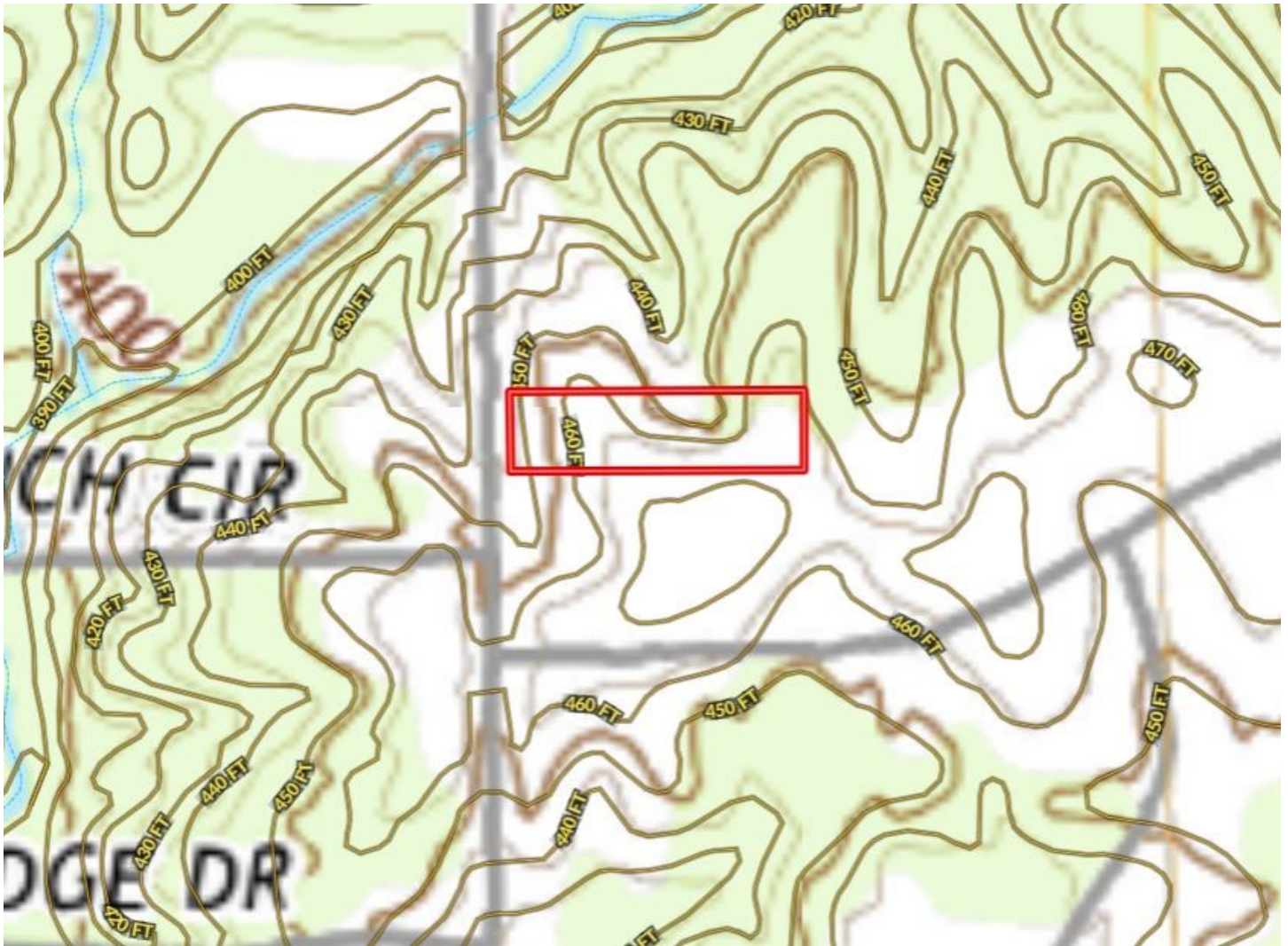
Expect More. Get More.

**TomSmithLandandHomes.com**

Information is believed to be accurate but not guaranteed.



# TOPO MAP



**TOM WISEMAN**

ASSOCIATE BROKER

Office: 662.268.6333

Cell: 662.317.0467

[TWiseman@TomSmithLand.com](mailto:TWiseman@TomSmithLand.com)



Expect More. Get More.

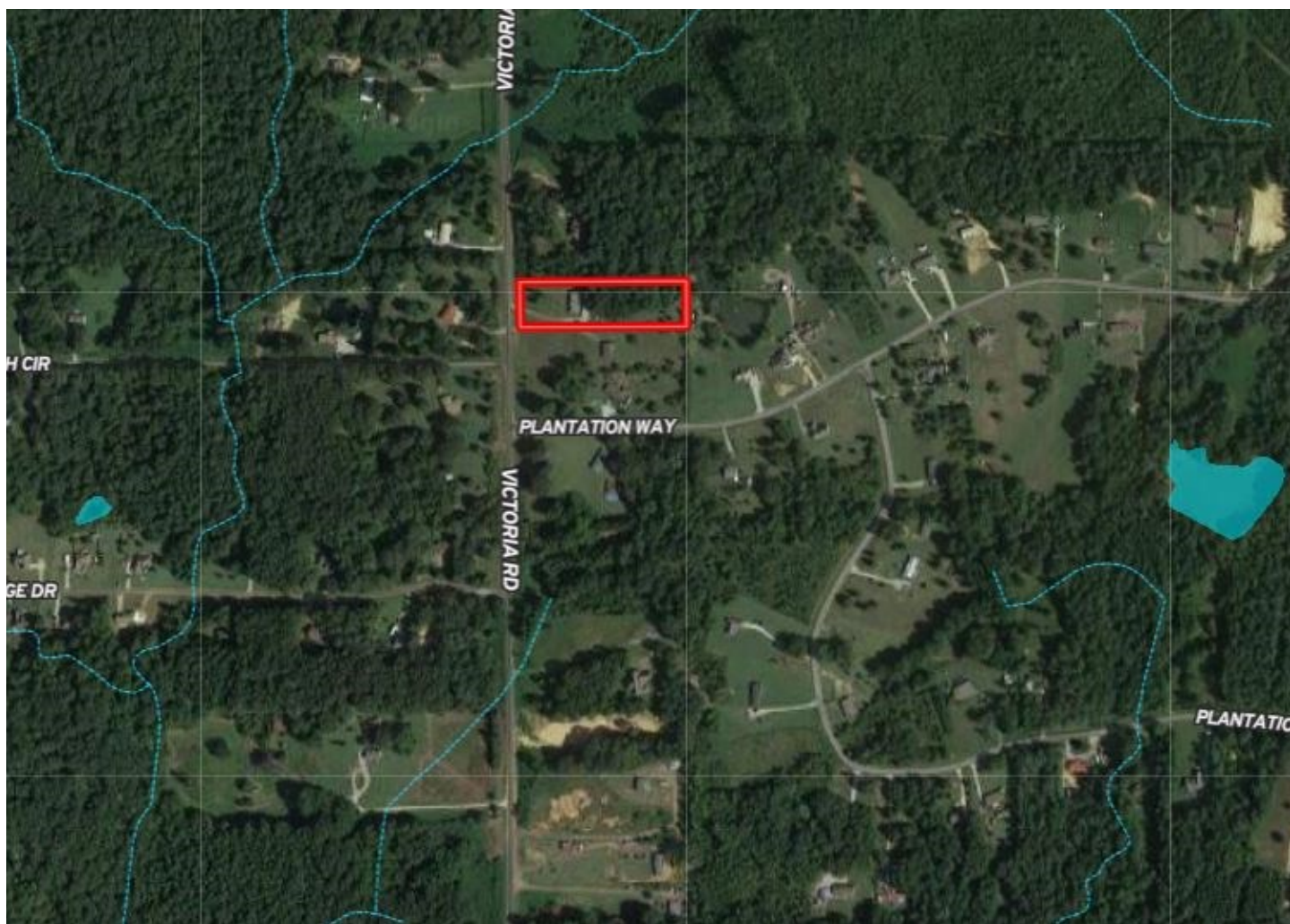
**A Real Estate Expert You Can Trust**

[TomSmithLandandHomes.com](http://TomSmithLandandHomes.com)

Information is believed to be accurate but not guaranteed.



# FLOOD MAP



*Call me today!*

**TOM WISEMAN**, ASSOCIATE BROKER  
Twiseman@TomSmithLand.com  
662.268.6333 **office** | 662.317.0467 **cell**

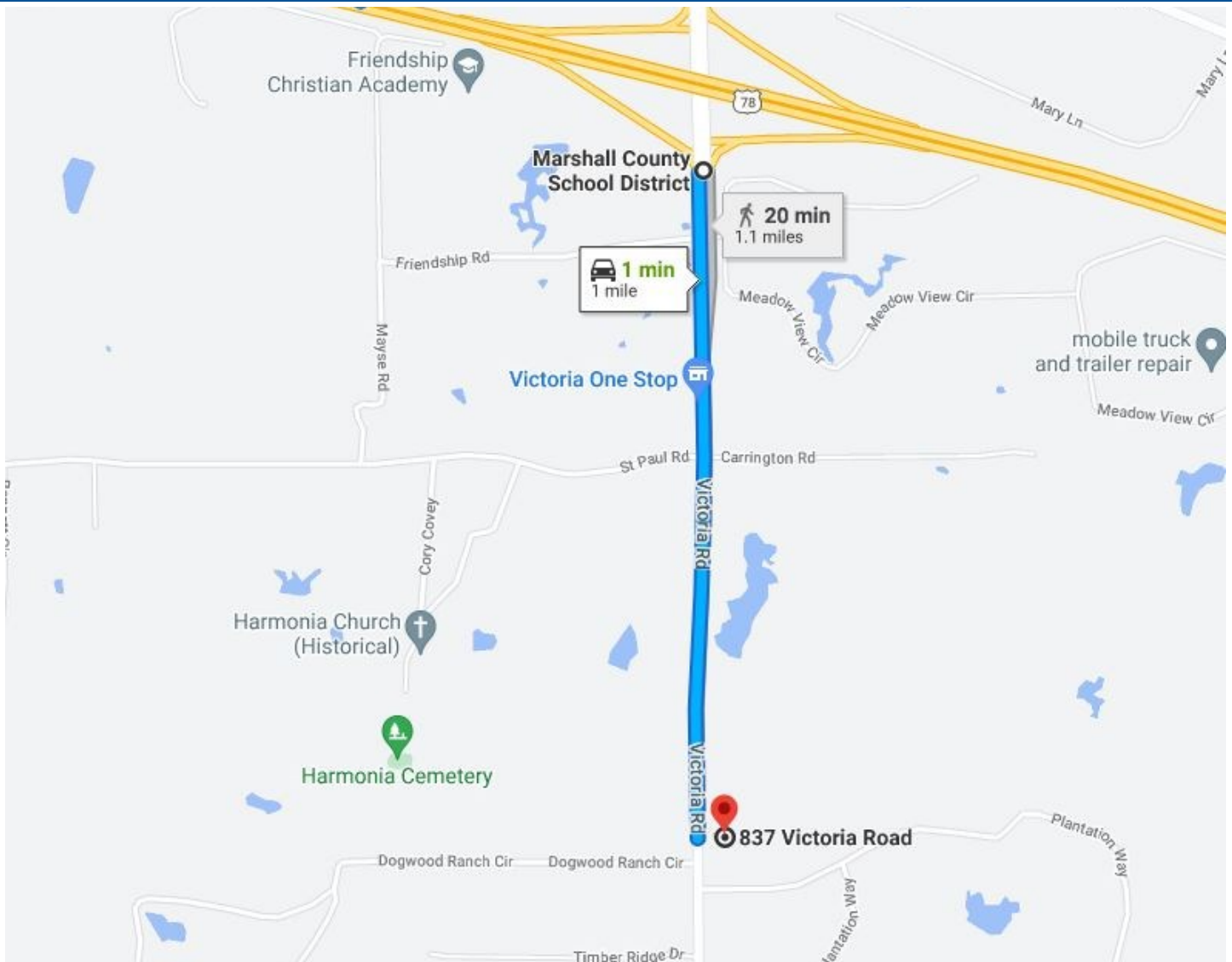


**TomSmithLandandHomes.com**

Information is believed to be accurate but not guaranteed.



# DIRECTIONAL MAP



**Directions:** From the Victoria Road exit on Interstate 22, travel south on Victoria Road 1 mile to the property on the left.

**Address:** 837 Victoria Road Byhalia, MS 38611 [GOOGLE MAP LINK](#)

**TOM WISEMAN**

ASSOCIATE BROKER

Office: 662.268.6333

Cell: 662.317.0467

[TWiseman@TomSmithLand.com](mailto:TWiseman@TomSmithLand.com)



**A Real Estate Expert You Can Trust**

[TomSmithLandandHomes.com](http://TomSmithLandandHomes.com)

Information is believed to be accurate but not guaranteed

