

Country Home with Acreage

63.5± Acres in Lauderdale County, MS



6978 BW Johnson Rd. Meridian, MS 39301



\$695,000

This must-see, secluded property in Lauderdale County, MS, features a 3,100 sq. ft. custom-built four bedroom, three bath home on 63.5 +/- acres. As you arrive at the property, you will drive through a beautiful iron and brick gate and continue up the asphalt driveway to have a fantastic view of the front of the house. Once you enter the home from the front porch, the living room will be on your left, with plenty of room for everyone to enjoy and a beautiful brick fireplace. There is an additional large family room with a gas log fireplace. There are two bedrooms, one bath upstairs, and a small balcony overlooking the front yard. The primary bedroom is located downstairs, along with the other spare bedroom and the kitchen and dining room in the central part of the home. Outside the house is a spacious shop to store anything you need, a workshop on the side, and an equipment shed up the hill. The property's road system will take you on a complete tour of this place's prime pine and hardwood timber mix. There is a small food plot in the central portion of this property with a large shooting house in place; deer and turkey are in abundance and will provide many memories for years to come. Pre-approval or proof of funds is required for viewing. Give us a call today to schedule your private showing!



TOM SMITH, ALC, BROKER
Tom@TomSmithLand.com
601.898.2772 office | 601.454.9397 cell



Expect More. Get More.

Call us today!



BRETT CARNEY, REALTOR®
Brett@TomSmithLand.com
601.898.2772 office | 601.710.9633 cell

TomSmithLandandHomes.com

Information is believed to be accurate but not guaranteed.





TOM SMITH, ALC[®], BROKER
 Tom@TomSmithLand.com
 601.898.2772 **office** | 601.454.9397 **cell**



BRETT CARNEY, REALTOR[®]
 Brett@TomSmithLand.com
 601.898.2772 **office** | 601.710.9633 **cell**

TomSmithLandandHomes.com

Information is believed to be accurate but not guaranteed.





TOM SMITH, ALC[®], BROKER
 Tom@TomSmithLand.com
 601.898.2772 **office** | 601.454.9397 **cell**



BRETT CARNEY, REALTOR[®]
 Brett@TomSmithLand.com
 601.898.2772 **office** | 601.710.9633 **cell**

TomSmithLandandHomes.com

Information is believed to be accurate but not guaranteed.





TOM SMITH, ALC[®], BROKER
 Tom@TomSmithLand.com
 601.898.2772 **office** | 601.454.9397 **cell**



BRETT CARNEY, REALTOR[®]
 Brett@TomSmithLand.com
 601.898.2772 **office** | 601.710.9633 **cell**

TomSmithLandandHomes.com

Information is believed to be accurate but not guaranteed.





TOM SMITH, ALC[®], BROKER
 Tom@TomSmithLand.com
 601.898.2772 **office** | 601.454.9397 **cell**



BRETT CARNEY, REALTOR[®]
 Brett@TomSmithLand.com
 601.898.2772 **office** | 601.710.9633 **cell**

TomSmithLandandHomes.com

Information is believed to be accurate but not guaranteed.





TOM SMITH, ALC[®], BROKER
 Tom@TomSmithLand.com
 601.898.2772 **office** | 601.454.9397 **cell**



BRETT CARNEY, REALTOR[®]
 Brett@TomSmithLand.com
 601.898.2772 **office** | 601.710.9633 **cell**

TomSmithLandandHomes.com

Information is believed to be accurate but not guaranteed.





TOM SMITH, ALC[®], BROKER
 Tom@TomSmithLand.com
 601.898.2772 **office** | 601.454.9397 **cell**



BRETT CARNEY, REALTOR[®]
 Brett@TomSmithLand.com
 601.898.2772 **office** | 601.710.9633 **cell**

TomSmithLandandHomes.com

Information is believed to be accurate but not guaranteed.





TOM SMITH, ALC[®], BROKER
 Tom@TomSmithLand.com
 601.898.2772 **office** | 601.454.9397 **cell**



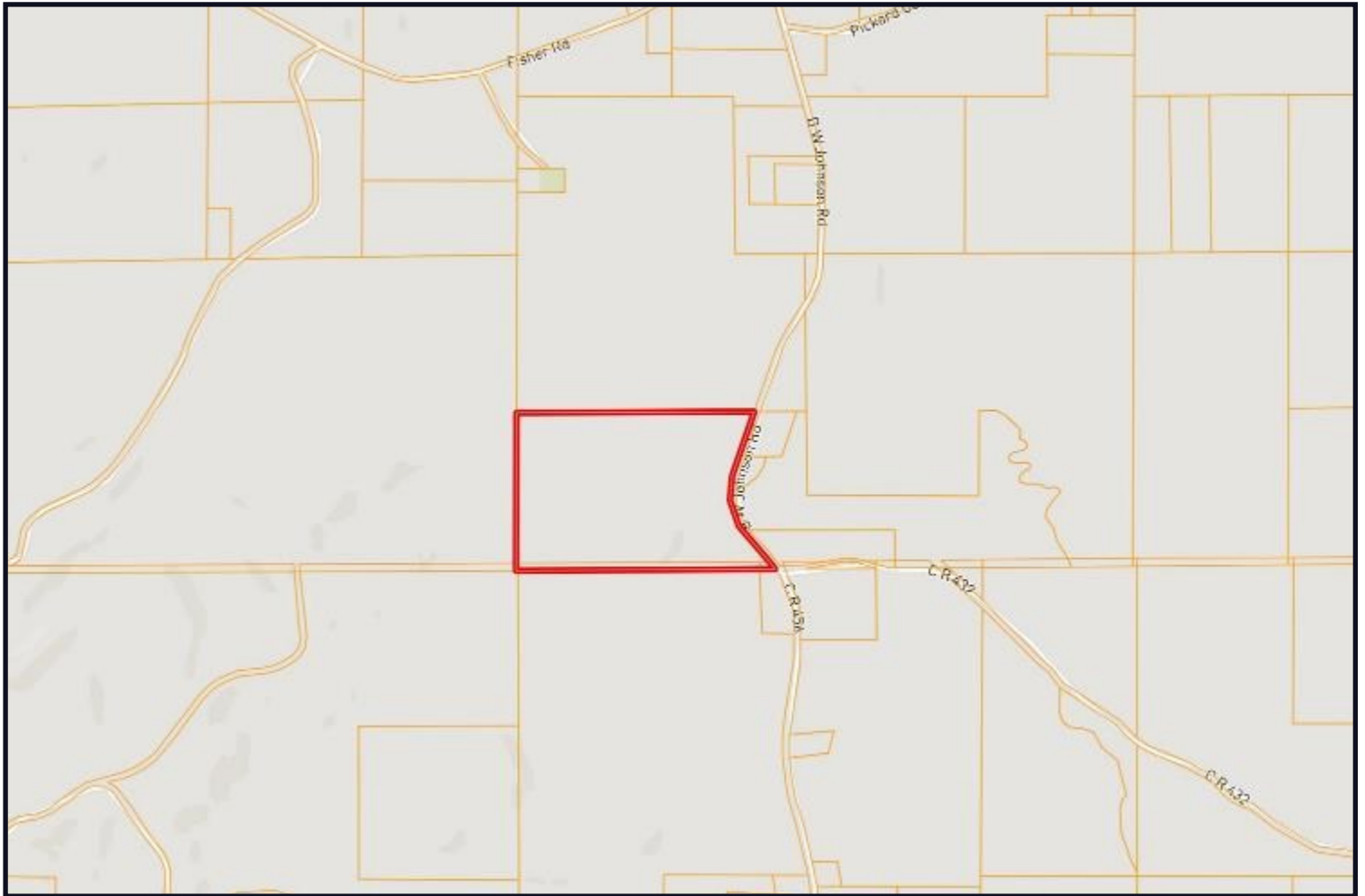
BRETT CARNEY, REALTOR[®]
 Brett@TomSmithLand.com
 601.898.2772 **office** | 601.710.9633 **cell**

TomSmithLandandHomes.com

Information is believed to be accurate but not guaranteed.



Ownership Map



TOM SMITH, ALC[®], BROKER
Tom@TomSmithLand.com
601.898.2772 **office** | 601.454.9397 **cell**

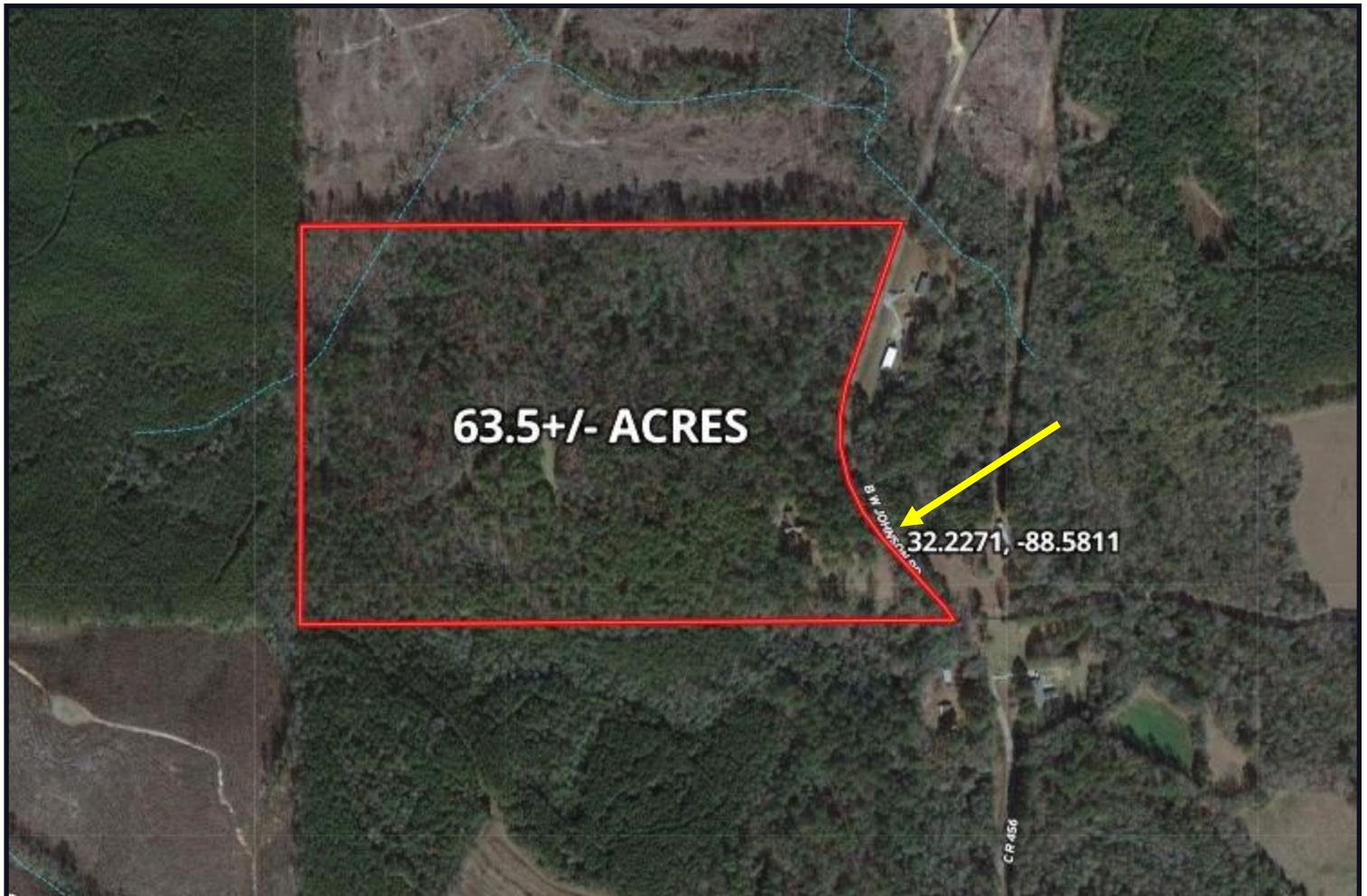
BRETT CARNEY, REALTOR®
Brett@TomSmithLand.com
601.898.2772 **office** | 601.710.9633 **cell**

TomSmithLandandHomes.com

Information is believed to be accurate but not guaranteed.



Aerial Photo



[Click Here for an Interactive Map](#)

TOM SMITH, ALC®, BROKER
Tom@TomSmithLand.com
601.898.2772 **office** | 601.454.9397 **cell**



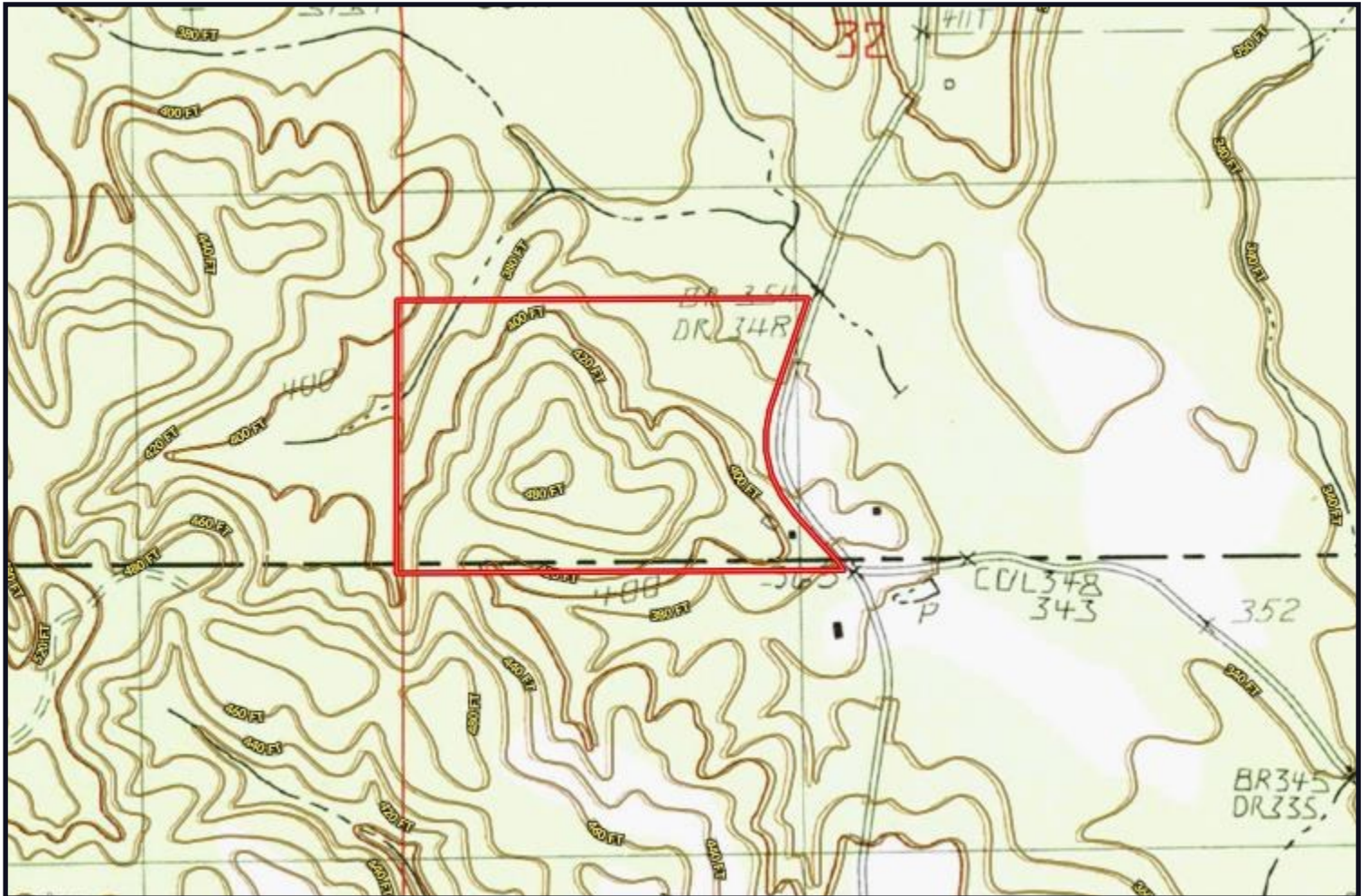
BRETT CARNEY, REALTOR®
Brett@TomSmithLand.com
601.898.2772 **office** | 601.710.9633 **cell**

TomSmithLandandHomes.com

Information is believed to be accurate but not guaranteed.



Topo Map



TOM SMITH, ALC®, BROKER
Tom@TomSmithLand.com
601.898.2772 **office** | 601.454.9397 **cell**



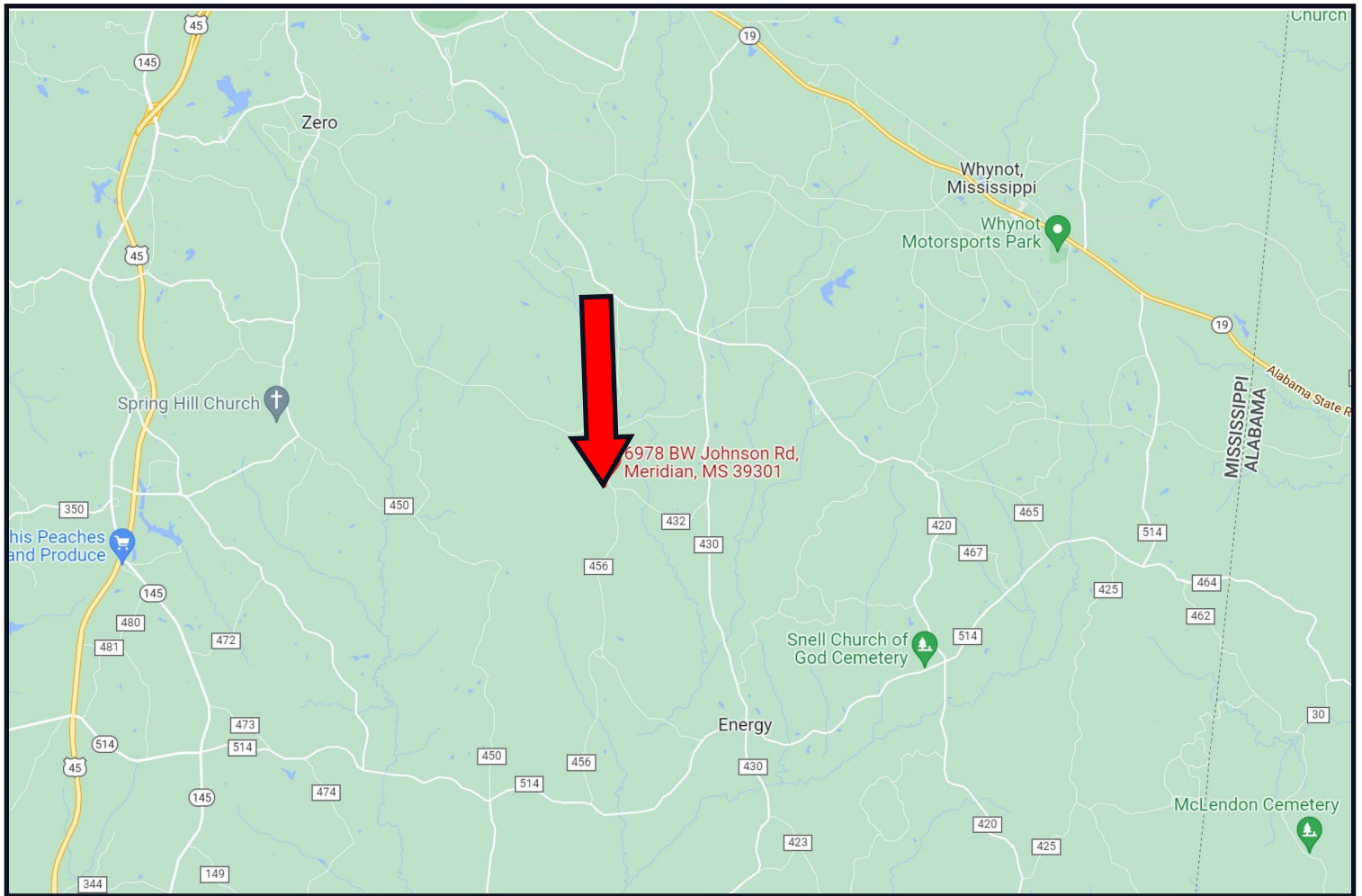
BRETT CARNEY, REALTOR®
Brett@TomSmithLand.com
601.898.2772 **office** | 601.710.9633 **cell**

TomSmithLandandHomes.com

Information is believed to be accurate but not guaranteed.



Directional Map



Directions from Causeyville Rd. and Hwy 45 in Meridian, MS: Travel Causeyville Road for 7.6 miles. Turn right onto B.W. Johnson Road and travel 2.6 miles. The home will be on your right.

Click for Directions: [6978 BW Johnson Rd. Meridian, MS 39301](#)



TOM SMITH, ALC®, BROKER
Tom@TomSmithLand.com
601.898.2772 office | 601.454.9397 cell



Expect More. Get More.

Call us today!



BRETT CARNEY, REALTOR®
Brett@TomSmithLand.com
601.898.2772 office | 601.710.9633 cell

TomSmithLandandHomes.com

Information is believed to be accurate but not guaranteed.

