

# Great Opportunity to Own Land 30+/- Acres in Jones County, MS \$90,000



Take a look at this 30+/- acre tract in Jones County, MS. This is a great opportunity to own property in Jones County. With 30 acres you have plenty of room for recreational activities. There's lots of wildlife sign through the property. There is a pipeline running through the property that is cleared and ready to hunt, just needs a stand. There is approximately 3.65 acres on the West side of the road and approximately 26 acres on the East side of the road. The property consists of mostly young hardwoods with mixed pines throughout. Utilities available at the road. Mobile homes allowed. Don't wait! Call Travis Smith today for your private viewing!

**DIRECTIONS FROM INTERSECTION OF HWY 28 and HWY 37 IN TAYLORSVILLE, MS:** [Google Map Link](#)



*Call me today!*

**TRAVIS SMITH, REALTOR®**  
Travis@TomSmithLand.com  
601.898.2772 **office** | 601.600.0428 **cell**



**TomSmithLandandHomes.com**

Information is believed to be accurate but not guaranteed.



*Call me today!*



**TRAVIS SMITH**, REALTOR®  
Travis@TomSmithLand.com  
601.898.2772 office | 601.600.0428 cell



Expect More. Get More.

**TomSmithLandandHomes.com**

Information is believed to be accurate but not guaranteed.



*Call me today!*



**TRAVIS SMITH, REALTOR®**  
Travis@TomSmithLand.com  
601.898.2772 office | 601.600.0428 cell

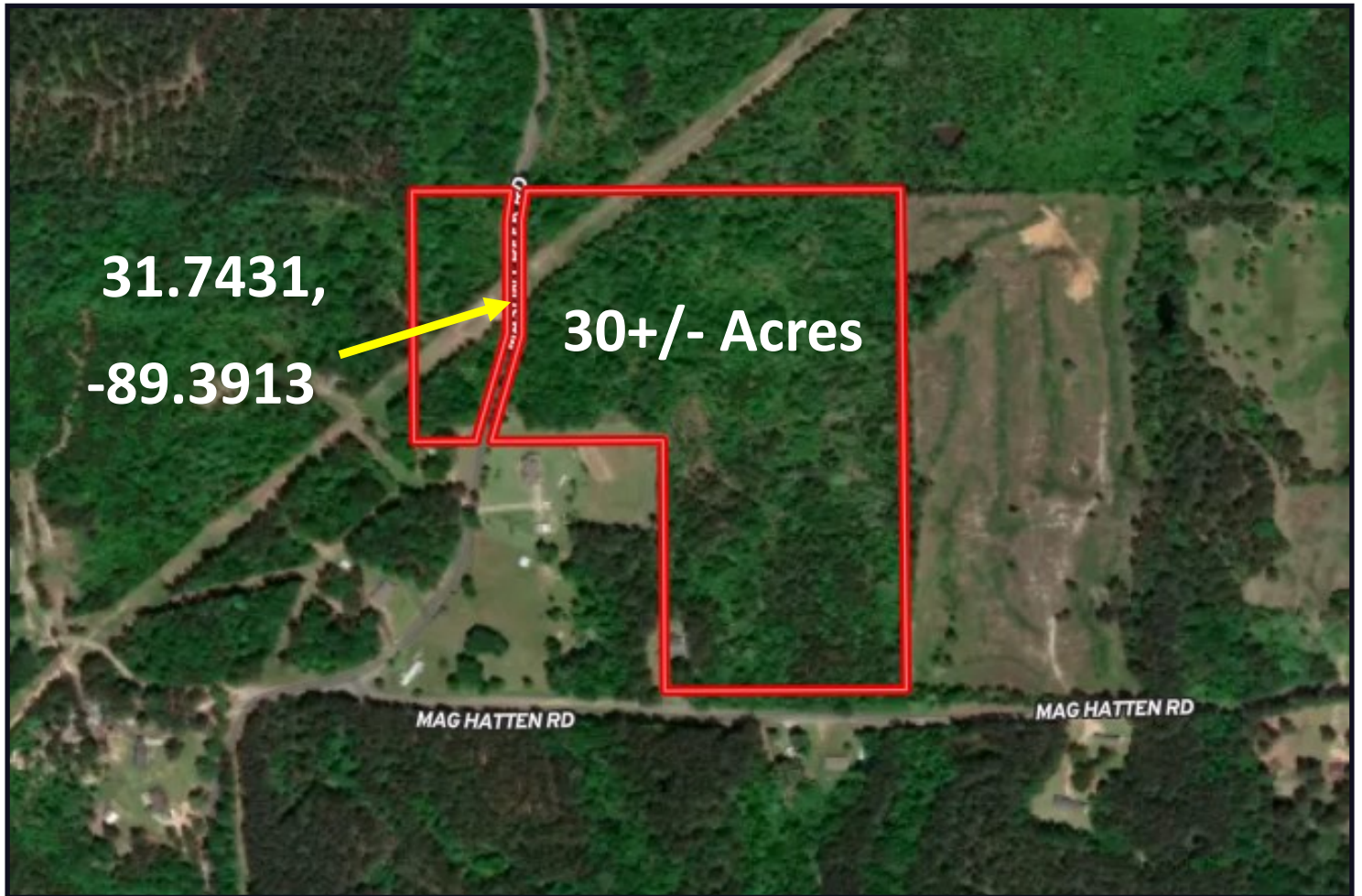


Expect More. Get More.

**TomSmithLandandHomes.com**

Information is believed to be accurate but not guaranteed.

# AERIAL MAP



CLICK [HERE](#) FOR AN INTERACTIVE MAP

*Call me today!*

**TRAVIS SMITH**, REALTOR®  
Travis@TomSmithLand.com  
601.898.2772 **office** | 601.600.0428 **cell**



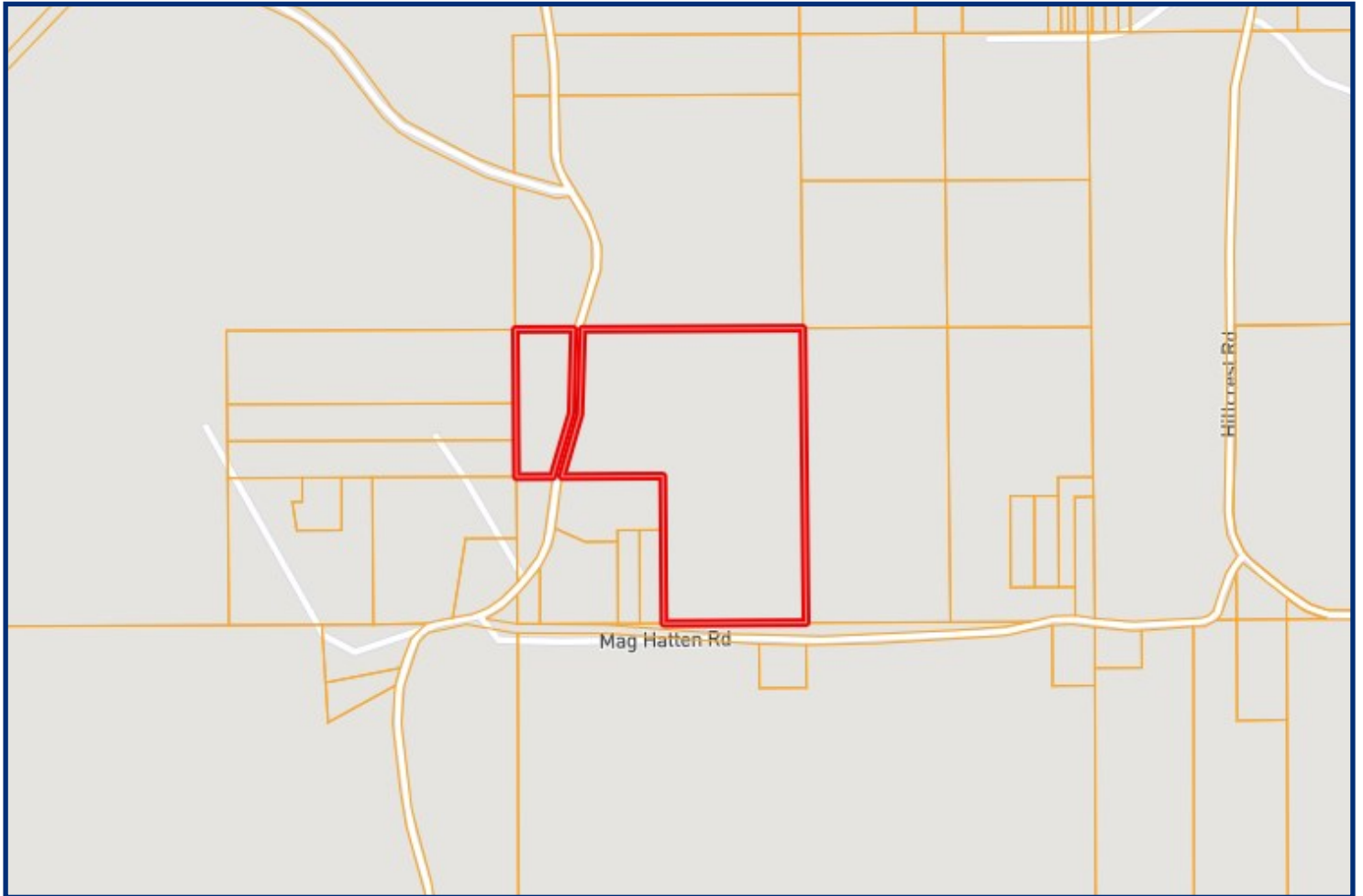
Expect More. Get More.



**TomSmithLandandHomes.com**

Information is believed to be accurate but not guaranteed.

# OWNERSHIP MAP



*Call me  
today!*

**TRAVIS SMITH**, REALTOR®  
Travis@TomSmithLand.com  
601.898.2772 **office** | 601.600.0428 **cell**

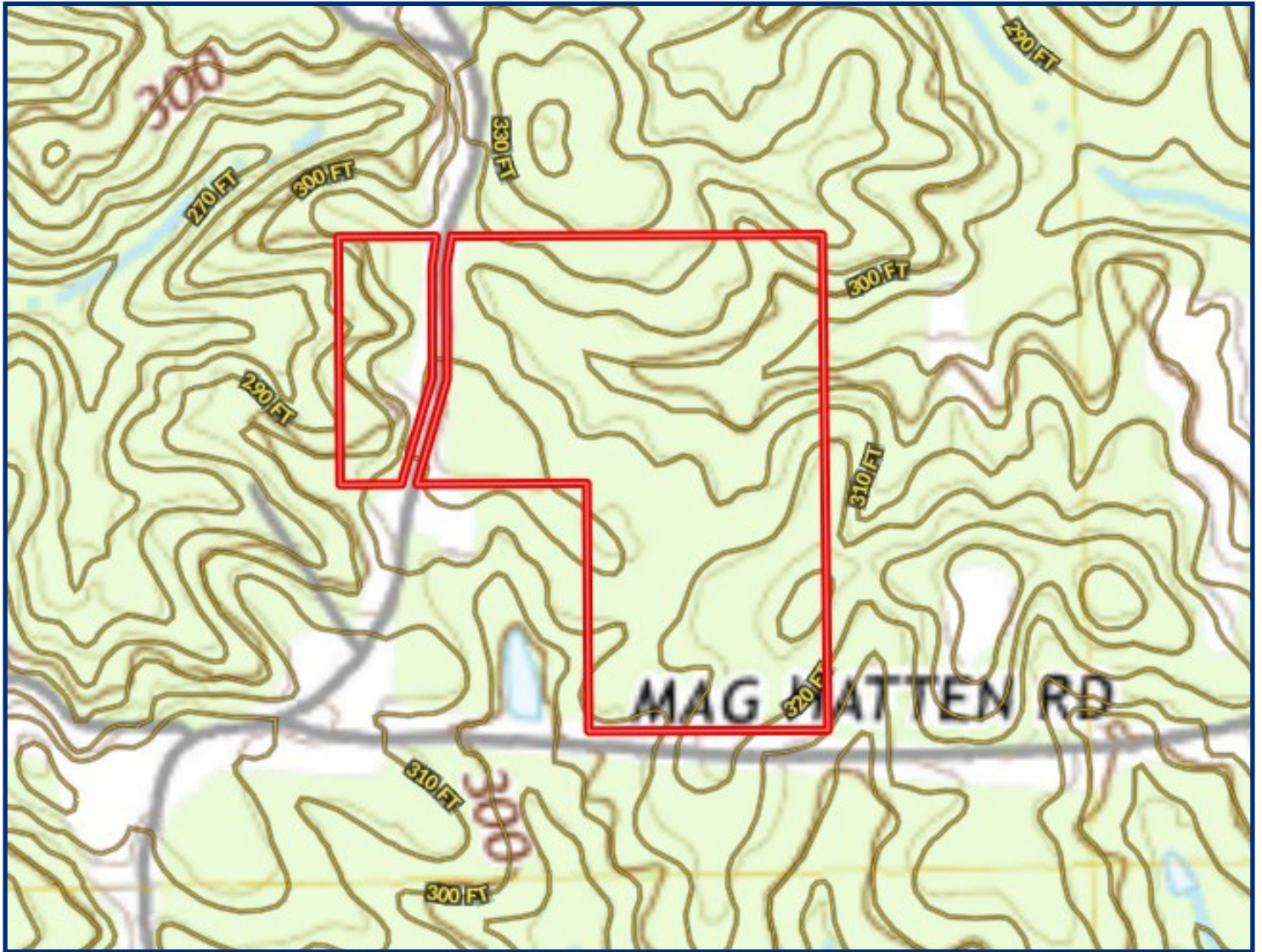


Expect More. Get More.

[TomSmithLandandHomes.com](http://TomSmithLandandHomes.com)

Information is believed to be accurate but not guaranteed.

# TOPO MAP



*Call me today!*

**TRAVIS SMITH**, REALTOR®  
Travis@TomSmithLand.com  
601.898.2772 office | 601.600.0428 cell



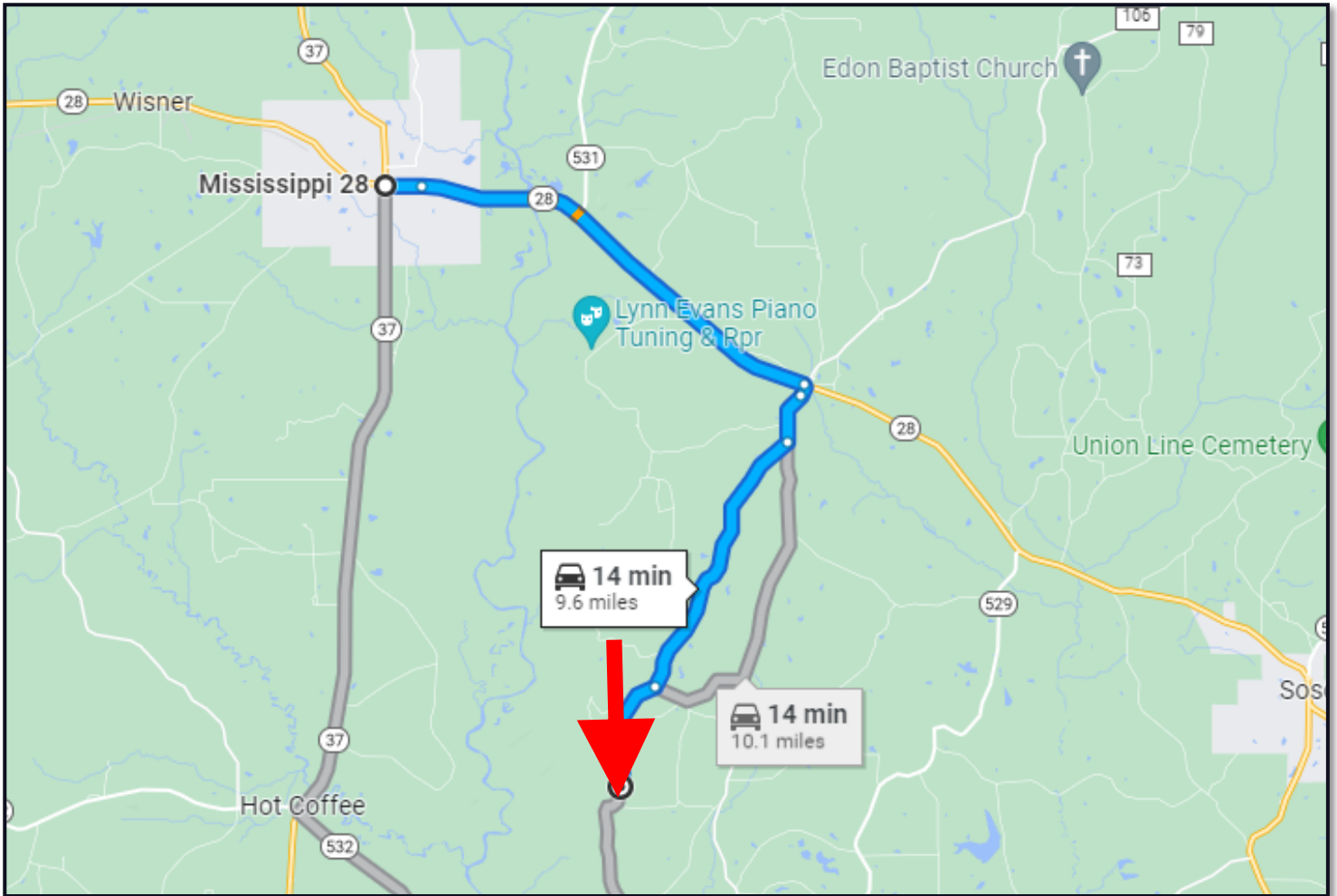
Expect More. Get More.



**TomSmithLandandHomes.com**

Information is believed to be accurate but not guaranteed.

# DIRECTIONAL MAP



## DIRECTIONS FROM INTERSECTION OF HWY 28 and HWY 37 IN TAYLORSVILLE, MS:

Travel south on Welcome St toward Front St, then Turn left onto Front St in 0.4 miles. Then Continue onto MS-28 E/Comfort St for 4.5 miles then Turn right onto S C Rd 8 in 0.1 miles, then Continue onto Summerland Rd for 0.5 miles then Turn right onto Carter Dees Rd in 2.9 miles. Continue onto Mason Creek Rd the property will be on your right in 1.2 miles. [Google Map Link](#)



*Call me today!*

**TRAVIS SMITH, REALTOR®**

Travis@TomSmithLand.com

601.898.2772 office | 601.600.0428 cell



Expect More. Get More.

**TomSmithLandandHomes.com**

Information is believed to be accurate but not guaranteed.