

0.3± Acre Lot in Madison County, MS



Have you been searching for a great subdivision to build your dream home? Welcome to your new 0.3+/- acre homesite location in the well sought after Northbay Subdivision in Madison County, MS! This 0.3+/- acre lot is situated just minutes from the Ross Barnett Reservoir and the perfect location to build. Enjoy the great view of a beautiful sunset and sunrise from your back porch. There are restrictive covenants in place. Utilities are available from the road. Call Kadero Edley today for your private showing!

[Google Maps Link](#)



Call me today!

KADERO EDLEY, REALTOR®
Kadero@TomSmithLand.com
601.898.2772 **office** | 601.488.7000 **cell**



TomSmithLandandHomes.com

Information is believed to be accurate but not guaranteed.



Call me today!

KADERO EDLEY, REALTOR®
Kadero@TomSmithLand.com
601.898.2772 office | 601.488.7000 cell



Expect More. Get More.

TomSmithLandandHomes.com

Information is believed to be accurate but not guaranteed.

Aerial Map



[Click here for Interactive Map](#)

Call me today!

KADERO EDLEY, REALTOR®
Kadero@TomSmithLand.com
601.898.2772 office | 601.488.7000 cell

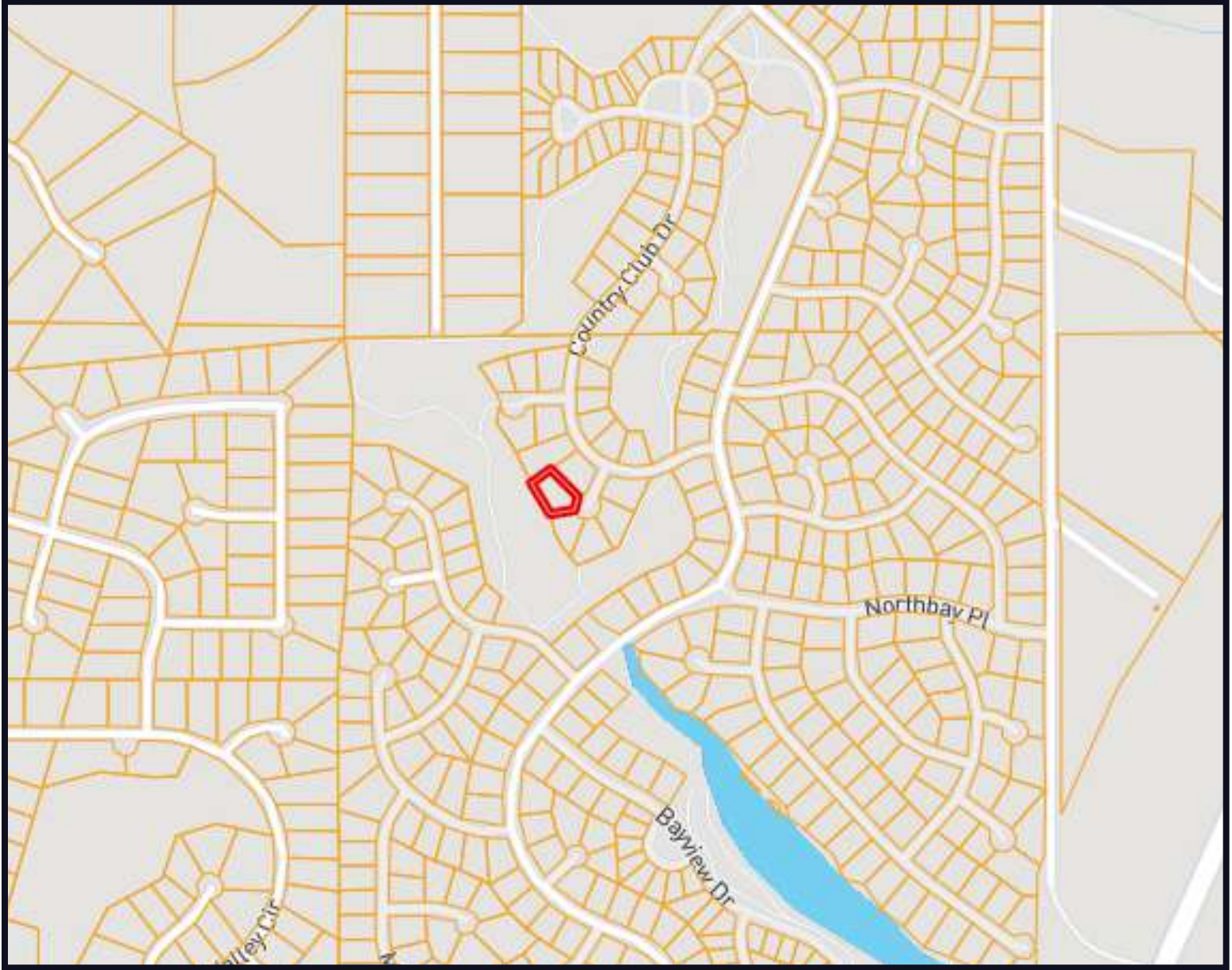


Expect More. Get More.

TomSmithLandandHomes.com

Information is believed to be accurate but not guaranteed.

Ownership Map



Call me today!

KADERO EDLEY, REALTOR®
Kadero@TomSmithLand.com
601.898.2772 **office** | 601.488.7000 **cell**



Expect More. Get More.

TomSmithLandandHomes.com

Information is believed to be accurate but not guaranteed.

Topographic Map



*Call me
today!*

KADERO EDLEY, REALTOR®
Kadero@TomSmithLand.com
601.898.2772 **office** | 601.488.7000 **cell**

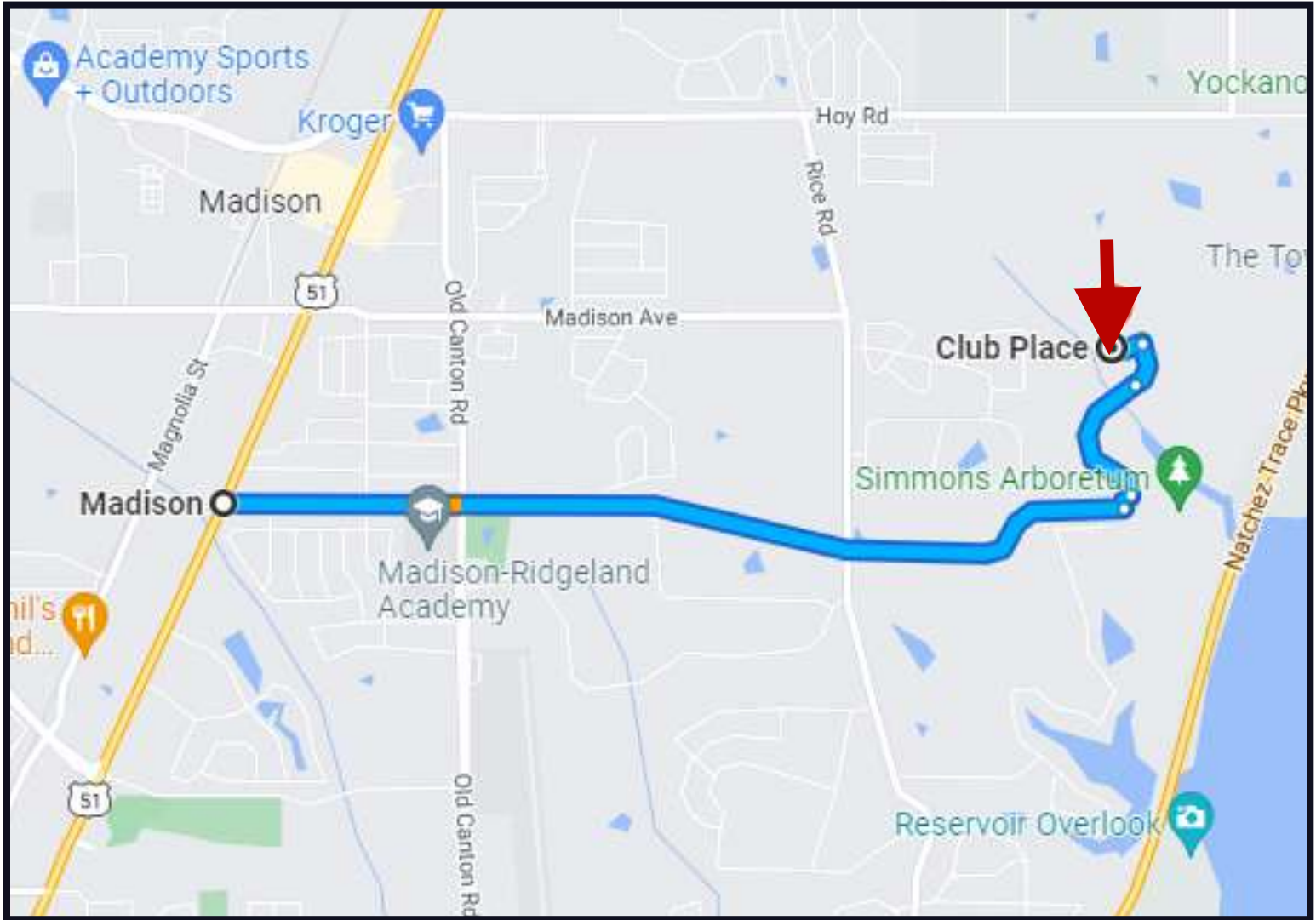


Expect More. Get More.

TomSmithLandandHomes.com

Information is believed to be accurate but not guaranteed.

Directional Map



Directions from St. Augustine Drive in Madison, MS: Travel east on St. Augustine Drive toward Holly Hedge Drive for 2.4 miles. Then turn left onto Gordon Place/Northbay Drive for 217 ft. Then turn left onto Northbay Drive into Northbay Subdivision for 0.4 miles. Turn left onto County Club Drive for 427 ft. Then turn left onto Club Place Drive for 135 ft. and the property will be on your right.

[Google Maps Link](#)



Call me today!

KADERO EDLEY, REALTOR®
Kadero@TomSmithLand.com
601.898.2772 **office** | 601.488.7000 **cell**



TomSmithLandandHomes.com

Information is believed to be accurate but not guaranteed.