

4.6± ACRE HOMESITE IN LINCOLN COUNTY, MS

\$46,000

This 4.6± acre tract is located in Bogue Chitto, Lincoln County, MS. This is an excellent small acreage tract and would be perfect for a country homesite. This property is mostly wooded and needs the vision to turn it into a great homestead. The property is located down a quiet country road but still maintains a convenient distance to the amenities of Brookhaven, MS, located less than 10 minutes away. This property also has additional acreage available to purchase, up to 18± acres. Utilities available nearby.

Directions from the intersection of US-51 and Brookway Blvd in Brookhaven, MS: Travel south on US-51, in 2.3 miles, turn left onto US-84E, in 1.1 miles, turn right onto Hog Chain Dr SE, in 1.3 miles, turn left onto Wilkinson Trail SE, in .1 miles, the property will be on the left.



Call me today!

PRESTON SMITH, MANAGING BROKER
Preston@TomSmithLand.com
601.990.5070 **office** | 601.209.7150 **cell**



TomSmithLandandHomes.com

Information is believed to be accurate but not guaranteed.



Call me today!

PRESTON SMITH, MANAGING BROKER
Preston@TomSmithLand.com
601.990.5070 **office** | 601.209.7150 **cell**



Expect More. Get More.

TomSmithLandandHomes.com

Information is believed to be accurate but not guaranteed.

Aerial Map



[Interactive Map Link](#)

Call me today!

PRESTON SMITH, MANAGING BROKER
Preston@TomSmithLand.com
601.990.5070 **office** | 601.209.7150 **cell**

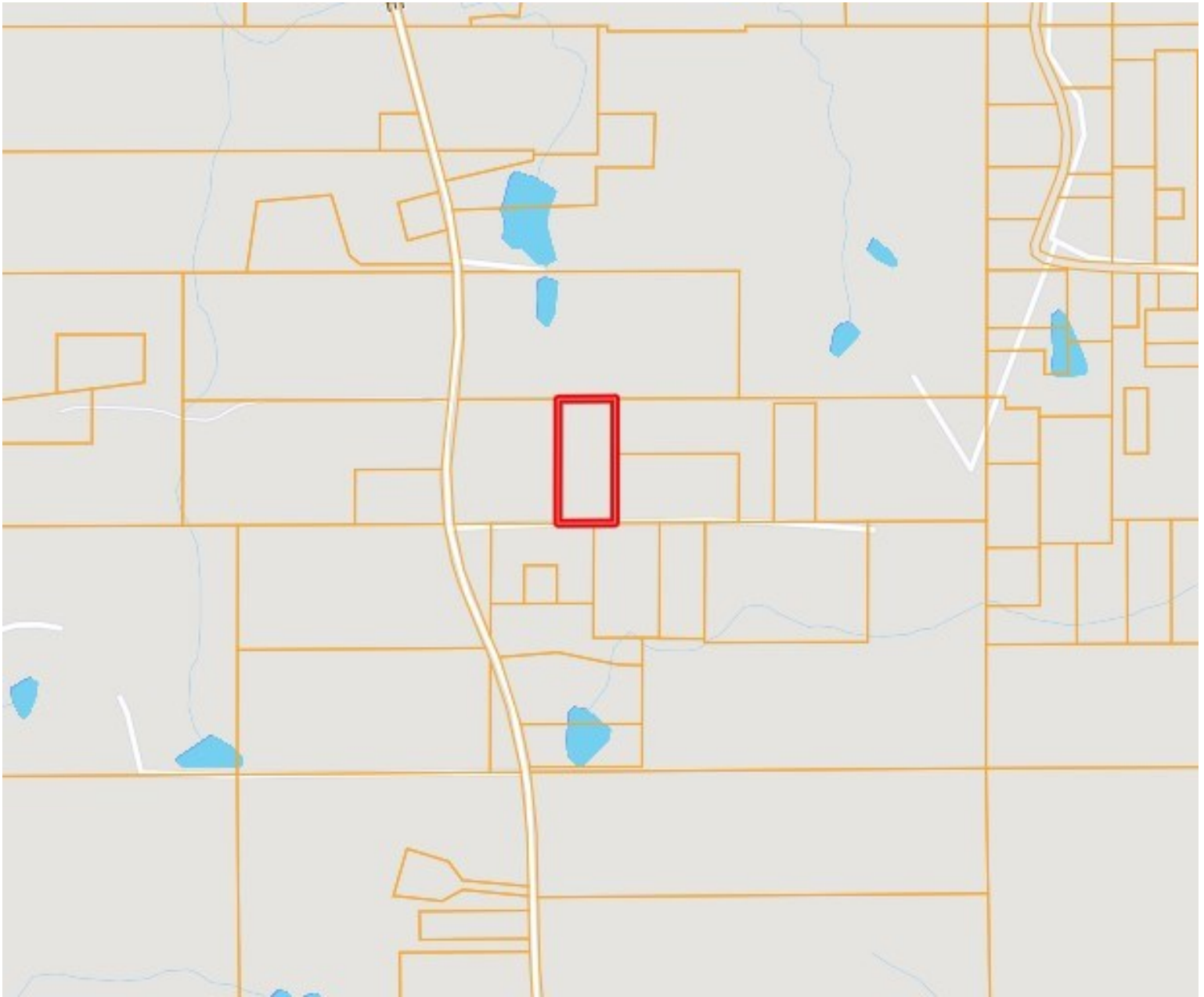


Expect More. Get More.

TomSmithLandandHomes.com

Information is believed to be accurate but not guaranteed.

Ownership Map



Call me today!

PRESTON SMITH, MANAGING BROKER
Preston@TomSmithLand.com
601.990.5070 **office** | 601.209.7150 **cell**



Expect More. Get More.

TomSmithLandandHomes.com

Information is believed to be accurate but not guaranteed.

Topography Map



Call me today!

PRESTON SMITH, MANAGING BROKER
Preston@TomSmithLand.com
601.990.5070 **office** | 601.209.7150 **cell**

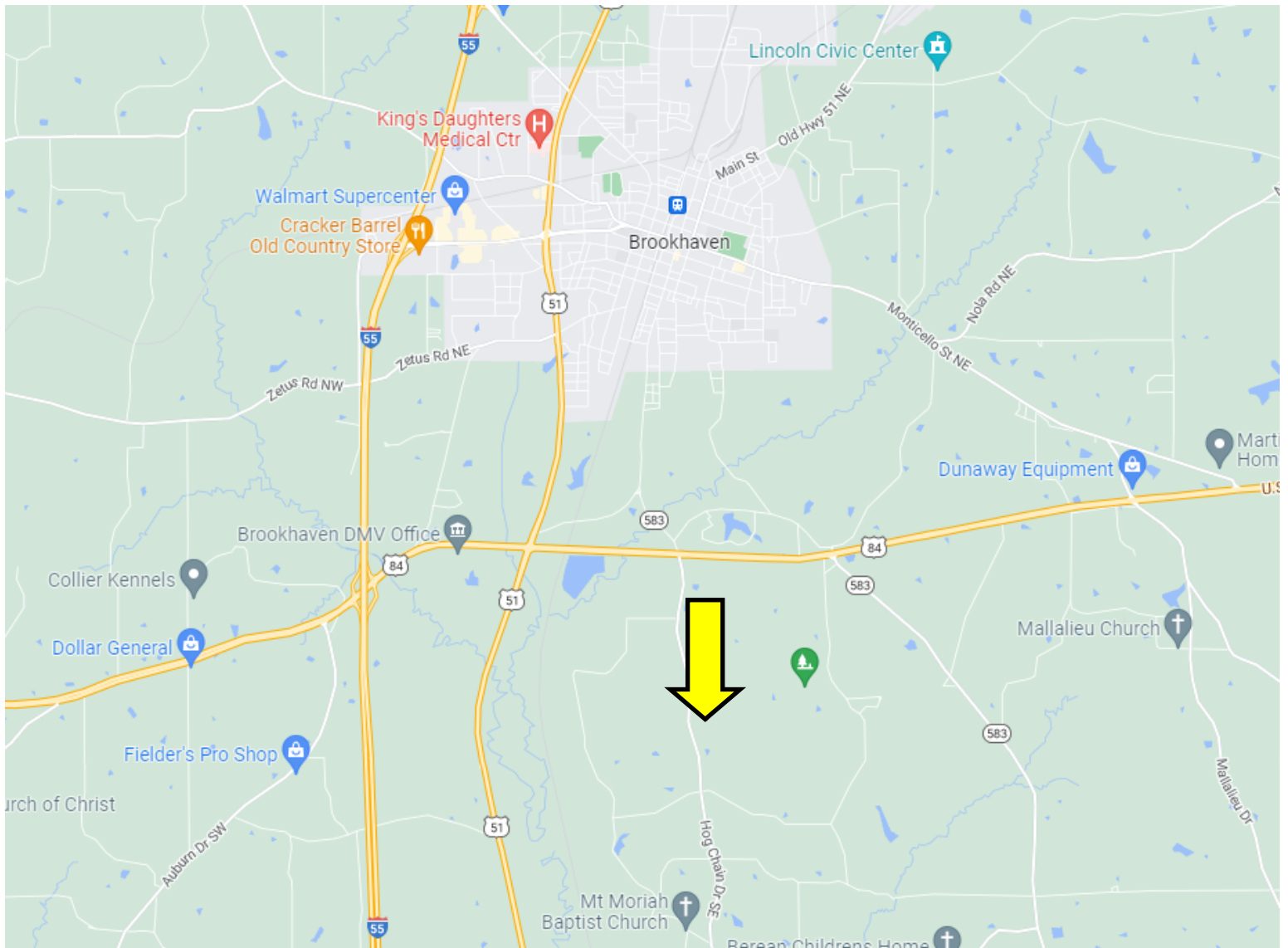


Expect More. Get More.

TomSmithLandandHomes.com

Information is believed to be accurate but not guaranteed.

Directional Map



Google Map Link

Directions from the intersection of US-51 and Brookway Blvd in Brookhaven, MS: Travel south on US-51, in 2.3 miles, turn left onto US-84E, in 1.1 miles, turn right onto Hog Chain Dr SE, in 1.3 miles, turn left onto Wilkinson Trail SE, in .1 miles, the property will be on the left.

Call me today!

PRESTON SMITH, MANAGING BROKER
Preston@TomSmithLand.com
601.990.5070 **office** | 601.209.7150 **cell**



Expect More. Get More.

TomSmithLandandHomes.com

Information is believed to be accurate but not guaranteed.