

4.66± ACRE HOMESITE IN LINCOLN COUNTY, MS

\$46,600

This 4.66± acre tract is located in Bogue Chitto, Lincoln County, MS. This is an excellent small acreage tract and would be perfect for a country homesite. This property is mostly wooded and needs the vision to turn it into a great homestead. The property is located down a quiet country road but still maintains a convenient distance to the amenities of Brookhaven, MS, located less than 10 minutes away. This property also has additional acreage available to purchase, up to 18± acres. Utilities available nearby.

Directions from the intersection of US-51 and Brookway Blvd in Brookhaven, MS: Travel south on US-51, in 2.3 miles, turn left onto US-84E, in 1.1 miles, turn right onto Hog Chain Dr SE, in 1.2 miles, the property will be on the left.



Call me today!

PRESTON SMITH, MANAGING BROKER
Preston@TomSmithLand.com
601.990.5070 **office** | 601.209.7150 **cell**



TomSmithLandandHomes.com

Information is believed to be accurate but not guaranteed.



Call me today!

PRESTON SMITH, MANAGING BROKER
Preston@TomSmithLand.com
601.990.5070 **office** | 601.209.7150 **cell**



Expect More. Get More.

TomSmithLandandHomes.com

Information is believed to be accurate but not guaranteed.

Aerial Map



[Interactive Map Link](#)

Call me today!

PRESTON SMITH, MANAGING BROKER
Preston@TomSmithLand.com
601.990.5070 **office** | 601.209.7150 **cell**

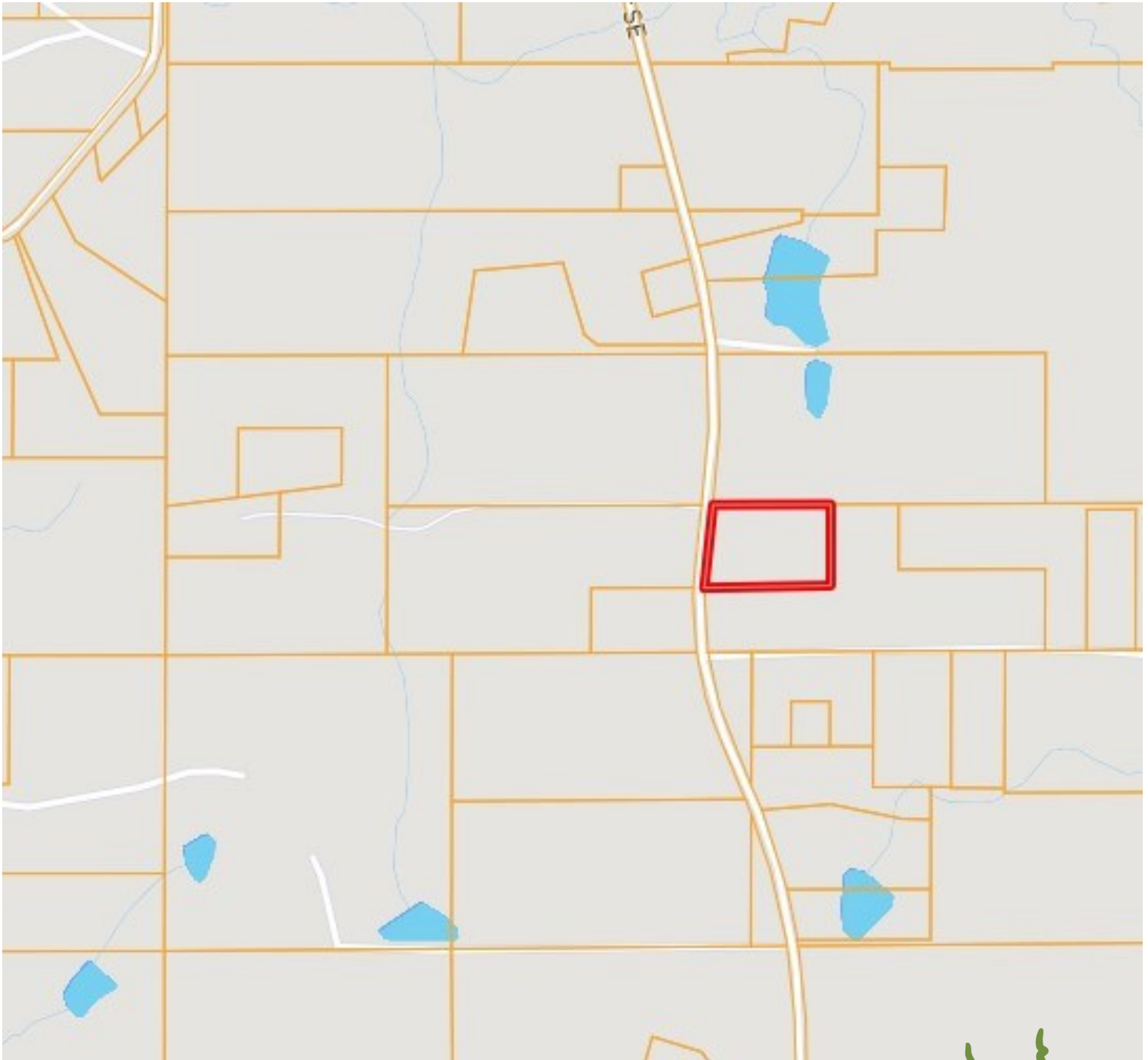


Expect More. Get More.

TomSmithLandandHomes.com

Information is believed to be accurate but not guaranteed.

Ownership Map



Call me today!

PRESTON SMITH, MANAGING BROKER
Preston@TomSmithLand.com
601.990.5070 **office** | 601.209.7150 **cell**

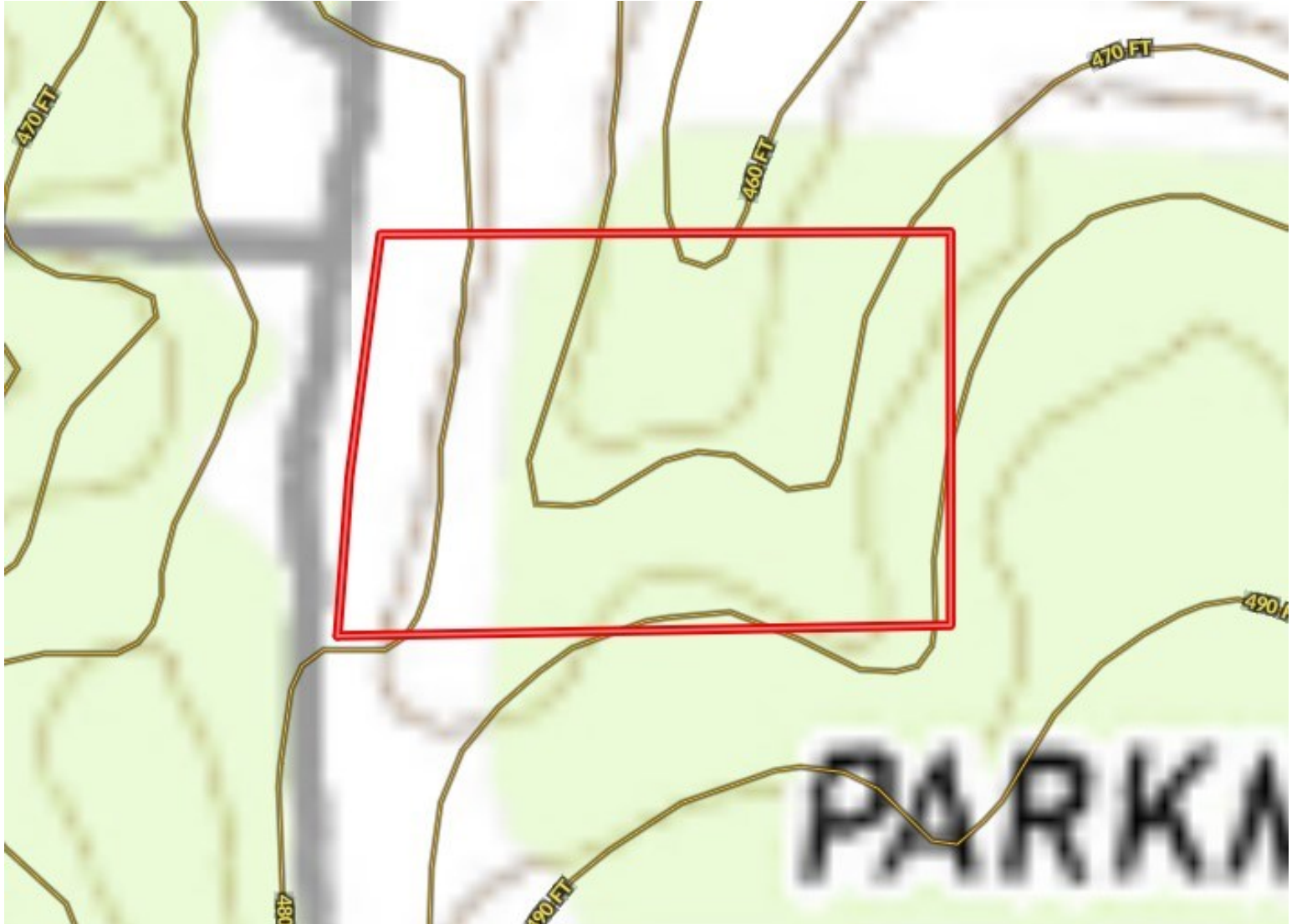


Expect More. Get More.

TomSmithLandandHomes.com

Information is believed to be accurate but not guaranteed.

Topography Map



Call me today!

PRESTON SMITH, MANAGING BROKER
Preston@TomSmithLand.com
601.990.5070 **office** | 601.209.7150 **cell**

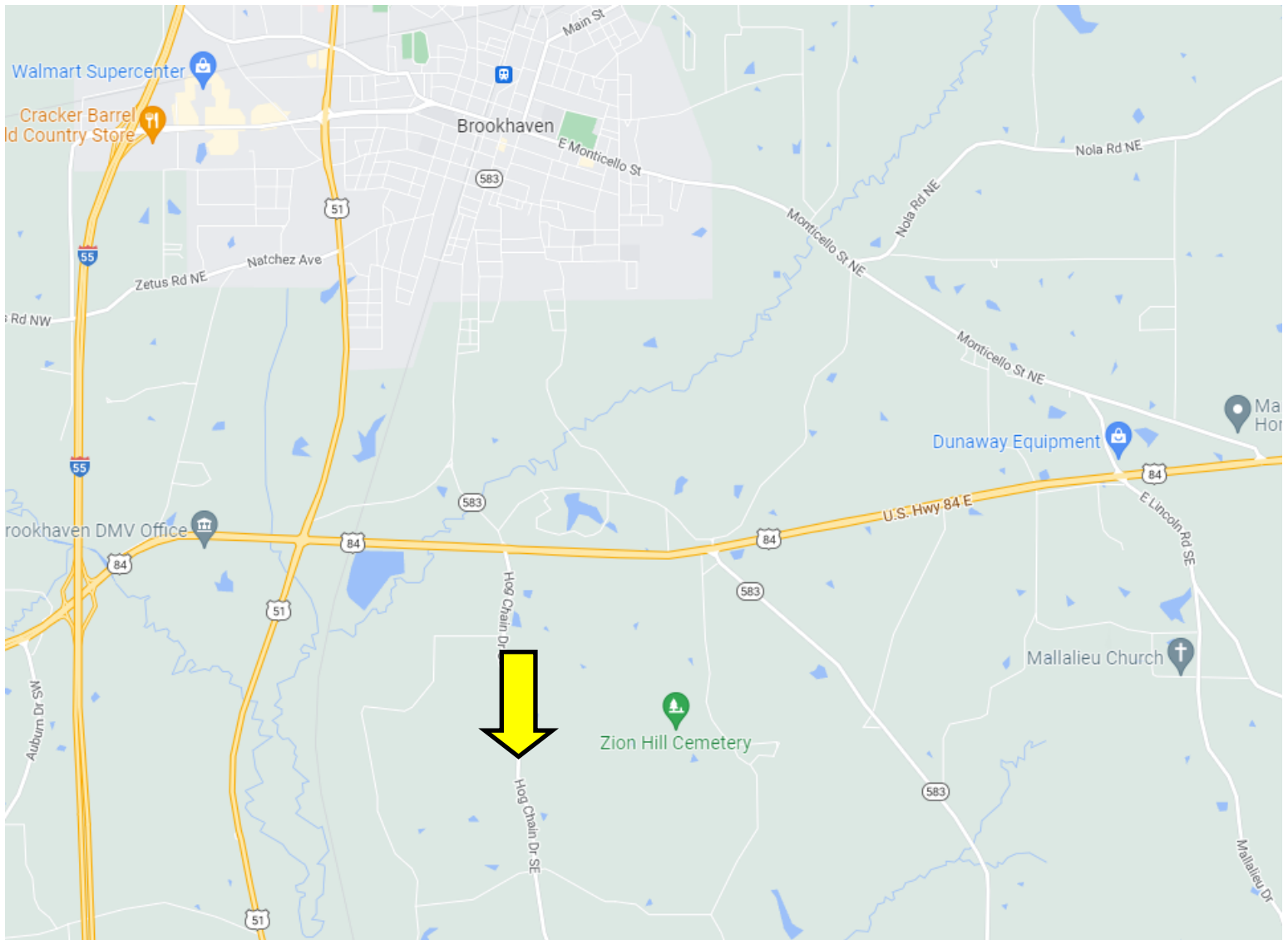


Expect More. Get More.

TomSmithLandandHomes.com

Information is believed to be accurate but not guaranteed.

Directional Map



Google Map Link

Directions from the intersection of US-51 and Brookway Blvd in Brookhaven, MS: Travel south on US-51, in 2.3 miles, turn left onto US-84E, in 1.1 miles, turn right onto Hog Chain Dr SE, in 1.2 miles, the property will be on the left.

Call me today!

PRESTON SMITH, MANAGING BROKER
Preston@TomSmithLand.com
601.990.5070 **office** | 601.209.7150 **cell**



Expect More. Get More.

TomSmithLandandHomes.com

Information is believed to be accurate but not guaranteed.